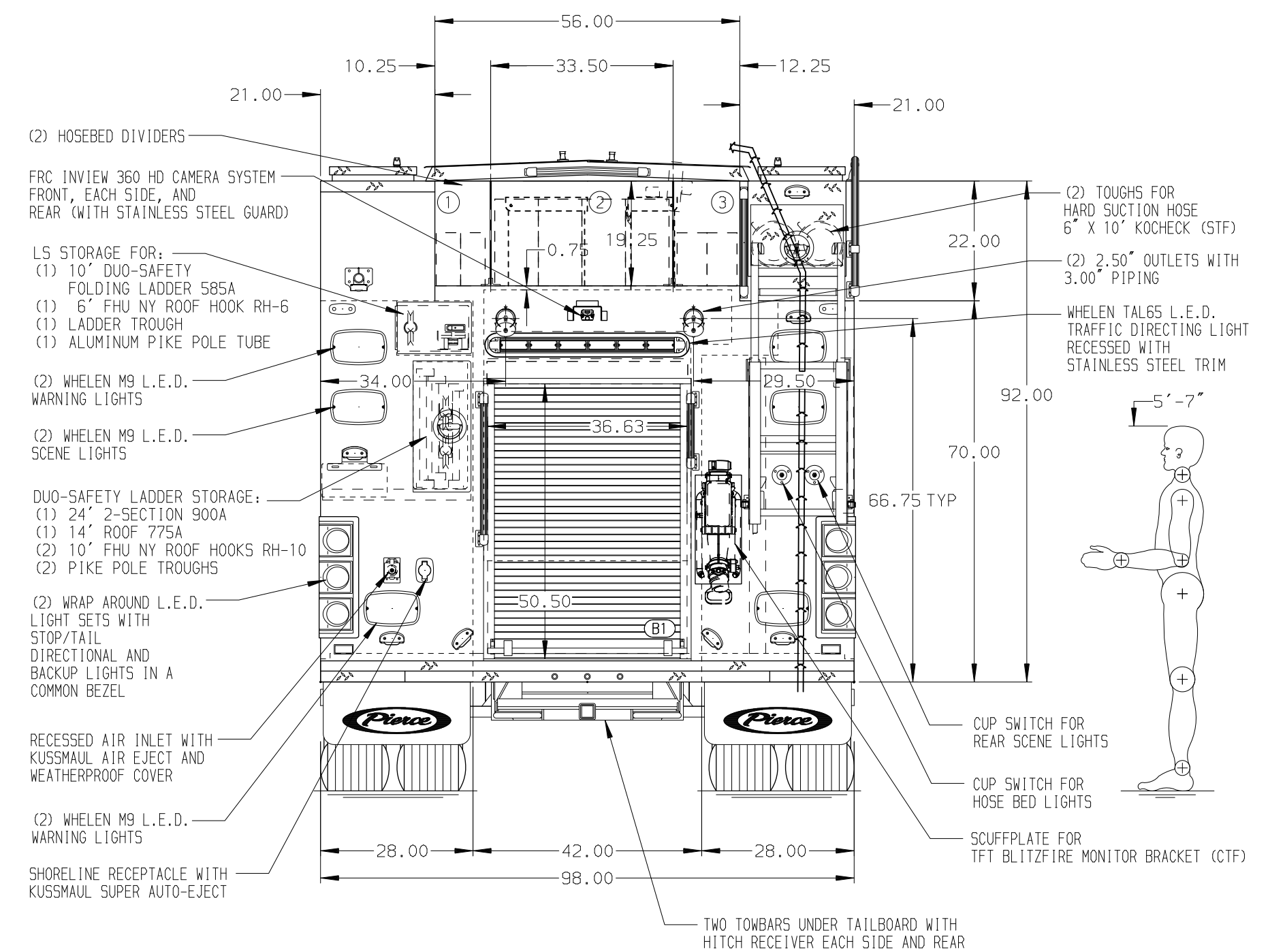


HOSEBED CAPACITIES

- ① - 300' OF 2.50" DJP HOSE
- ② - 1000' OF 5.00" DJP HOSE
- ③ - 300' OF 3.00" DJP HOSE



ALUMINUM BODY

SIDE ROLL AND FRONTAL IMPACT PROTECTION

NOTE

DIMENSIONS SHOWN ARE APPROXIMATE AND ARE SUBJECT TO MINOR DEVIATIONS AS MAY OCCUR OR BE NECESSARY IN CONSTRUCTION. MINOR DETAILS NOT SHOWN.

1. ONSPOT AUTOMATIC TIRE CHAINS TO BE PROVIDED AT REAR
2. BATTERY CHARGER LOCATED BEHIND DRIVER'S SEAT
3. BATTERY CHARGER INDICATOR BEHIND DRIVER'S SEAT DISPLAYED THROUGH WINDOW
4. DUAL L.E.D. LIGHT STRIPS BELOW ALUMINUM HOSE BED COVER
5. L.E.D. LIGHT STRIP LOCATED ON THE FRONT OF THE HOSEBED
6. DUAL L.E.D. LIGHT STRIPS ON EACH BODY COMPARTMENT DOOR
7. TEN ELASTIC PULL STRAPS ON COMPARTMENT DOORS LOCATED PER ORDER
8. FOUR FULL WIDTH/DEPTH ADJUSTABLE SHELVES IN COMPARTMENTS LOCATED PER ORDER
9. SIX CABLE RELEASE LATCH WITH SINGLE HAND OPERATION FOR TILT/SLIDE OUT TRAYS LOCATED PER ORDER
10. FIVE ADJUSTABLE TILT/SLIDE-OUT TRAYS IN COMPARTMENTS LOCATED PER ORDER

11. TWO FLOOR MOUNTED SINGLE SLIDE-OUT TRAYS IN COMPARTMENTS LOCATED PER ORDER
12. ONE FLOOR MOUNTED SLIDE-OUT 500A TRAY IN COMPARTMENT LOCATED PER ORDER
13. ONE CTECH DRAWER ASSEMBLY IN COMPARTMENT LOCATED PER ORDER
14. ONE SWING-OUT ALUMINUM TOOL BOARD IN COMPARTMENT LOCATED PER ORDER
15. ONE ADJUSTABLE TOOLBOARD MOUNTED TO SLIDE-OUT TRAY IN COMPARTMENT LOCATED PER ORDER
16. ONE SLIDE-OUT TOOLBOARD WITH PEGBOARD PATTERN AND PAINTED FINISH IN COMPARTMENT LOCATED PER ORDER
17. PARTITION BETWEEN COMPARTMENTS L51/B1 AND R51/B1
18. ONE VERTICAL PARTITION IN COMPARTMENT LOCATED PER ORDER
19. THREE ALUMINUM PEGBOARD ON BACK WALL OF COMPARTMENTS LOCATED PER ORDER
20. RACK FOR (6) AIR BAGS IN COMPARTMENT LOCATED PER ORDER
21. STORAGE BIN FOR (12) AIR BOTTLES IN COMPARTMENT LOCATED PER ORDER
22. STORAGE BIN FOR (2) AIR BOTTLES IN COMPARTMENT LOCATED PER ORDER
23. STORAGE BIN FOR (3) FIRE EXTINGUISHERS IN COMPARTMENT LOCATED PER ORDER
24. SEVEN STRAPS FOR AIR BOTTLES IN COMPARTMENTS LOCATED PER ORDER
25. DUAL L.E.D. LIGHT STRIPS ON CROSSLAY COMPARTMENTS
26. THREE ADDITIONAL POLY TRAYS PER ORDER
27. TWO CIRCUIT BREAKER PANEL IN COMPARTMENTS LOCATED PER ORDER
28. THREE 120V 7-PLACE RECEPTACLE STRIPS MOUNTED IN CAB PER ORDER
29. FOUR 20A/120V 4-PLACE RECEPTACLE BOXES IN COMPARTMENTS LOCATED PER ORDER

REV	DATE	BY	CH	VELOCITY
19DEC22		SAM	JGO	MAKE
12OCT22		SAM	MGE	PIERCE
30JUN22		SAM	MGE	MODEL

		JOB NO.	37756
		SCALE	1:24
		DATE	
TITLE		DRAWN BY	SAM
FOR		CHECKED BY	MGE
DWG NO.		SHEET SIZE	D
		SHEET NO.	1 OF 1

37756AD