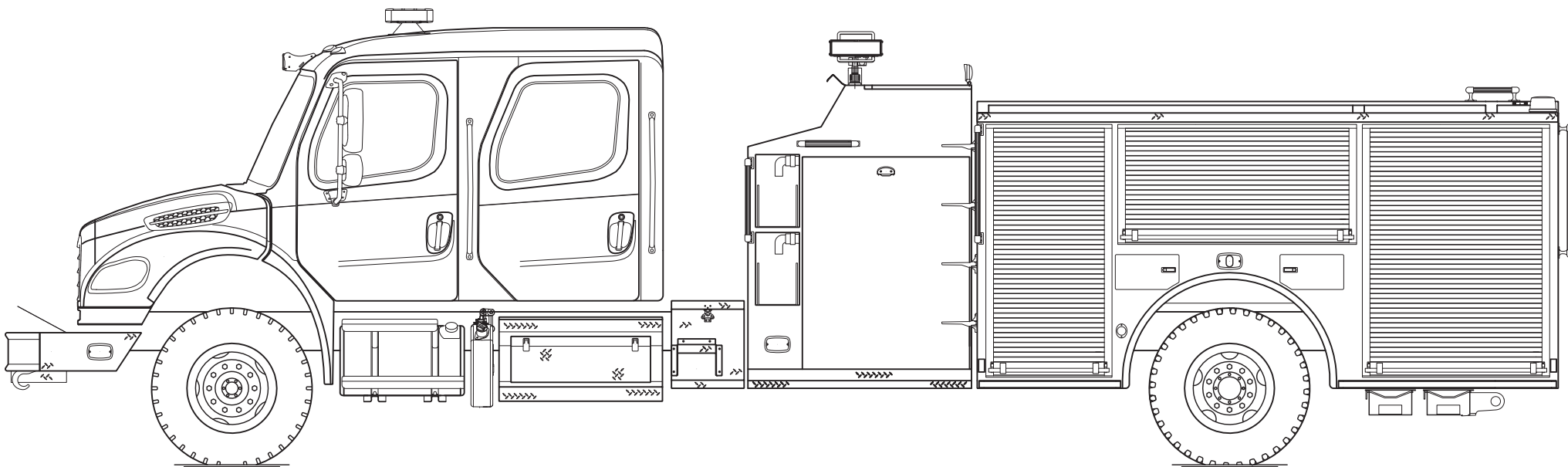




PERFORM. LIKE NO OTHER.™

# Freightliner Pumper

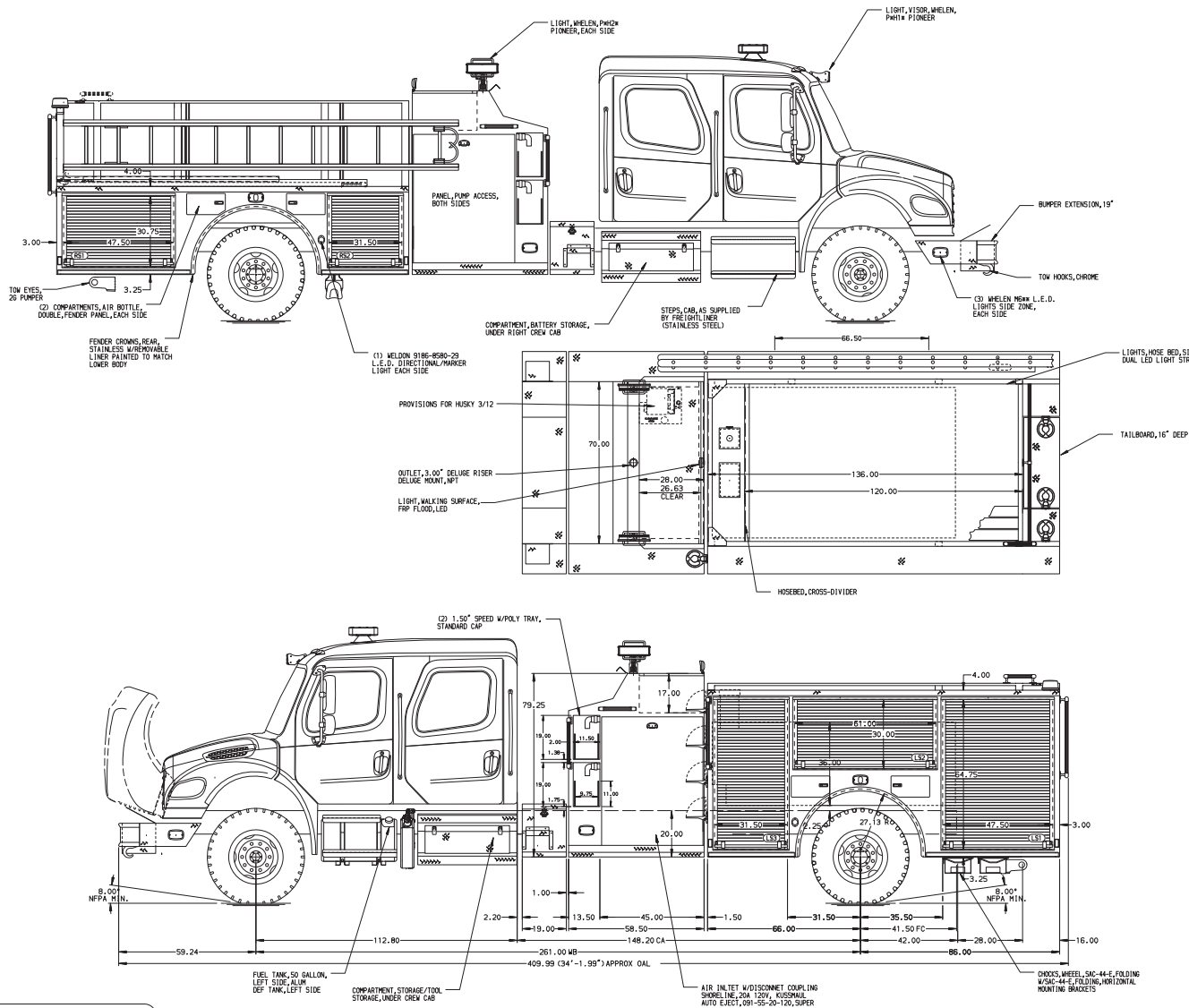


## Chassis

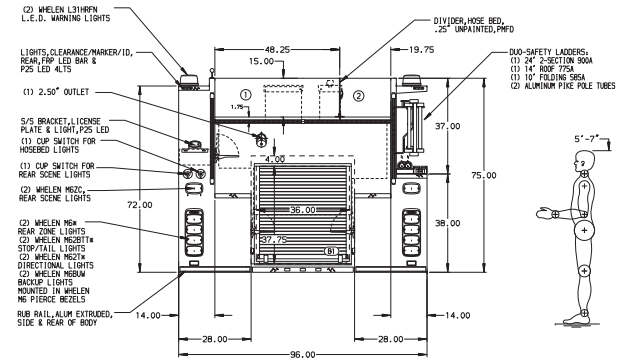
Chassis	4-door Freightliner M2-106 cab
Seating Capacity	5
Overall Height	10' 3"
Overall Length	34' 2"
GVW Rating	37,300 lb
Front Axle	Freightliner, 13,300 lb
Rear Axle	Meritor, 24,000 lb
Engine	Cummins L9, 360 hp, 1150 lb-ft

## Body

Material	Aluminum
Compartmentation	152" high/low compartmentation
Doors	Rollup
Pump	Waterous, 1,500 gpm
Tank	750 gallons
Pump Panel	<b>Pierce® Control Zone™</b> 45" pump panel w/ 19" walkway
Foam System	Provisions for future foam system
Foam Cell	20 gallons



- HOSERED CAPACITIES**
- ① - 1000' OF 5.00" D.J. POLY HOSE
  - ② - 400' OF 3.00" D.J. POLY HOSE



## ALUMINUM BODY

**NOTE**  
DIMENSIONS SHOWN ARE APPROXIMATE AND ARE SUBJECT TO MINOR DEVIATIONS AS MAY OCCUR OR BE NECESSARY IN CONSTRUCTION.  
MINOR DETAILS NOT SHOWN.

REV	DATE	BY	CHK	APP
22APR24		RWR	AJA	CH

Pierce MANUFACTURING INC.		JOB NO.	41200
TITLE		SCALE	1:24
FOR		DATE	22MAR24
DWG NO.		CHECKED BY	AJA
		SHEET NO.	1 OF 1

1500GPM, 750 WATERTANK, 730 WATER, 20 FOAM  
152" 2ND GEN PUMPER, DIRECT WIRED  
PIERCE FIELD UNIT

41200AD