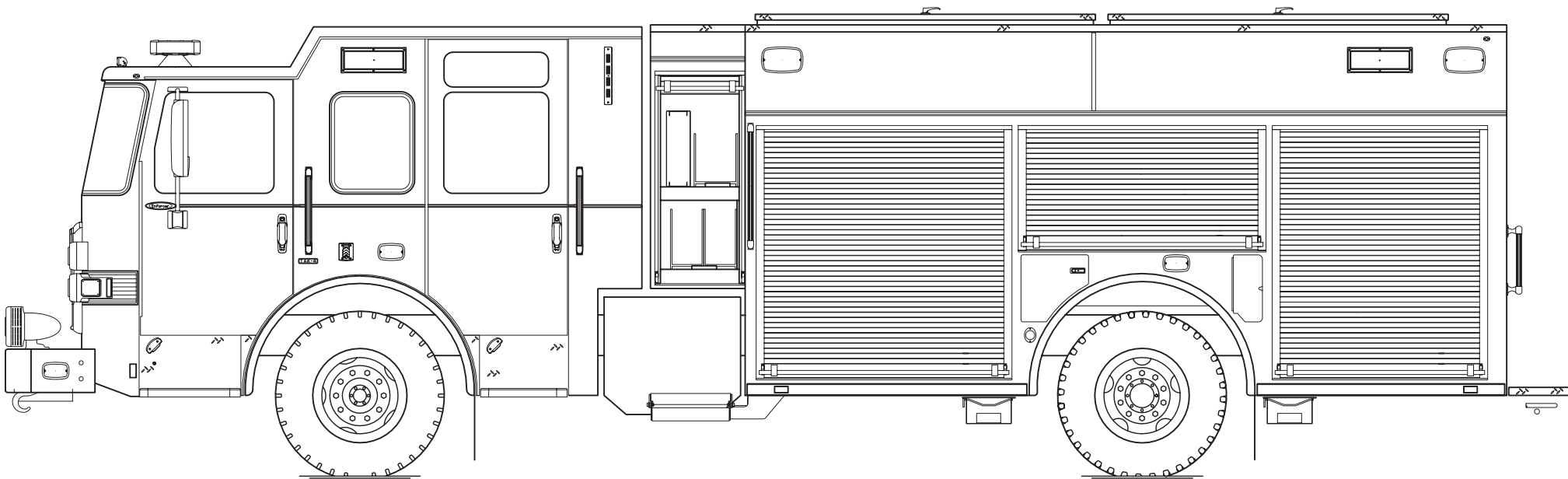




PERFORM. LIKE NO OTHER.™

Enforcer™ PUC™ Pumper



Chassis

Chassis	70" Enforcer cab w/10" raised roof
Seating Capacity	7
Overall Height	10' 1"
Overall Length	32' 4.5"
GVW Rating	45,000 lb
Front Axle	TAK-4® Independent Front Suspension , 18,000 lb
Rear Axle	Meritor RS26-185, 27,000 lb
Engine	Cummins X12, 455 hp, 1700 lb-ft
HVAC	Extreme-Duty HVAC System 80,000 BYU/HR Cab Insulation Package w/ Solar Window Film

Body

Material	Aluminum
Shelving	Adjustable, up to 500 lb
Doors	Rollup
Pump	Pierce® PUC , 1,500 gpm
Tank	750 gallons, low hosebed
Pump Panel	Pierce® Control Zone™ 31" pump panel
Foam System	Husky™ 3 Foam System
Foam Cell	20 gallons

Pumper, PUC BODY

Pumper, PUC, Aluminum
CHASSIS
Enforcer Chassis, PUC

CHASSIS
AXLE, FRONT, CUSTOM
18,000 Lb TAK-4 Axle

AXLE, REAR
27,000 Lb Meritor Axle

ENGINE
455 HP Cummins X12 Engine

TRANSMISSION
Allison 5th Gen, 4000 EVS P

BUMPER
19" Extended Painted Steel

CAB
7010 Enforcer Cab, PUC

BODY WATER TANK

750 Gallon Poly Water Tank
COMPT, PUMPER, REAR
33.50" FF RollUp Rear Compt w/Tailboard, PUC

COMPT, PUMPER, LEFT SIDE
189" RollUp Full Height & Depth Front & Rear, PUC

COMPT, PUMPER, RIGHT SIDE
189" RollUp Full Height & Depth Front & Rear, PUC

FIRE SUPPRESSION PUMPHOUSE

Control Zone, PUC

PUMP

PUC Pump 1500 GPM

CROSSLAYS, 1.50"
(2) 1.50", Poly Trays, 200"

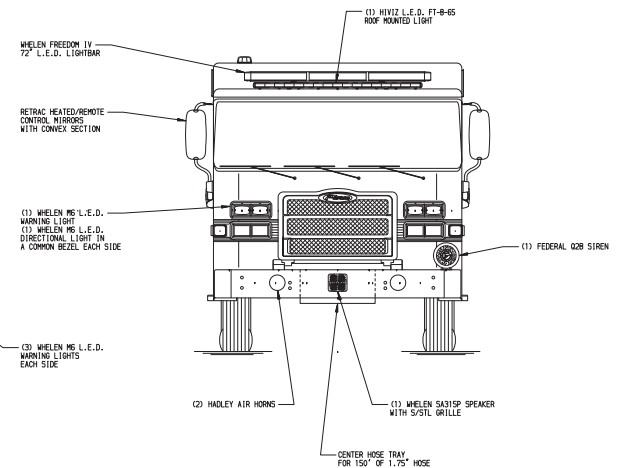
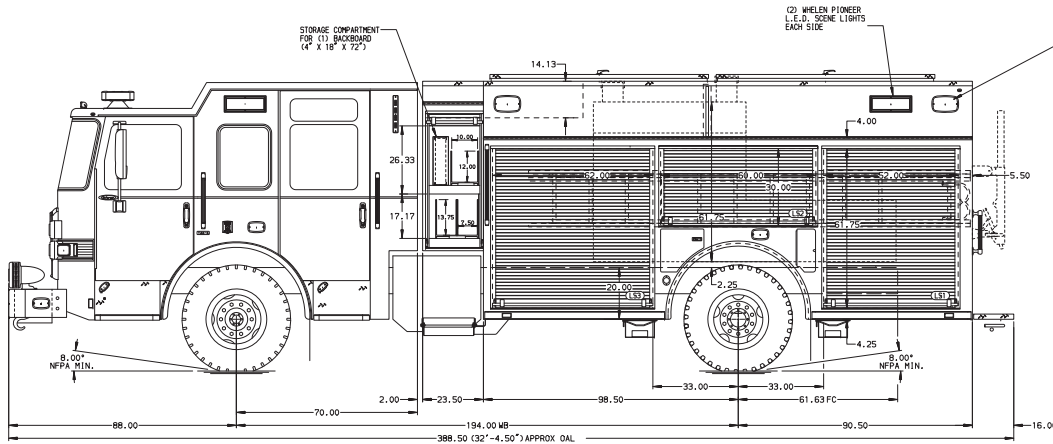
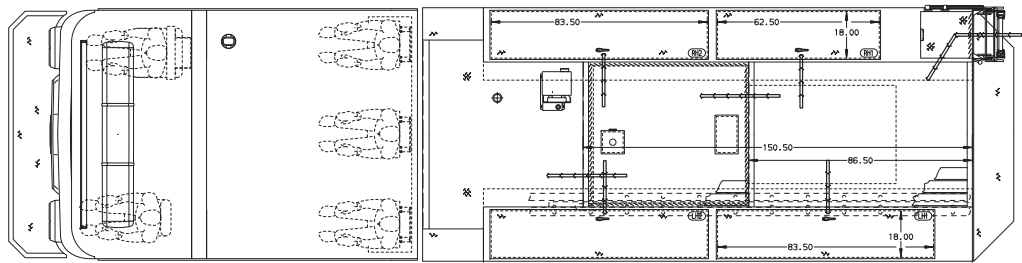
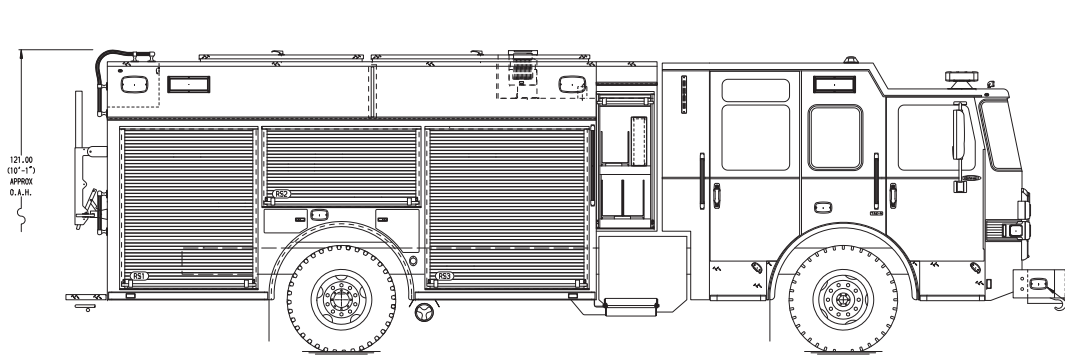
CROSSLAYS, 2.50"
(1) 2.50", Poly Tray, 200"

GENERATOR

Generator Not Required

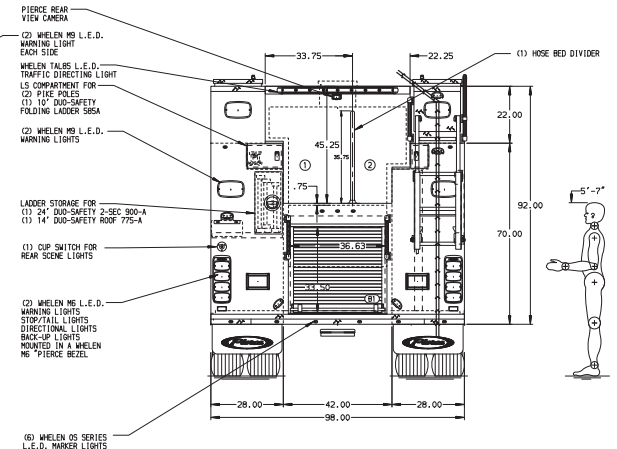
Foam System
Husky 3 Foam System

Foam Cell
20 Gal Foam Reduce Water



HOSEBED CAPACITY

RED 1
1000' OF 5.00" D.J. POLY HOSE
RED 2
600' OF 2.50" D.J. POLY HOSE



NOTE
DIMENSIONS SHOWN ARE APPROXIMATE AND ARE SUBJECT TO MINOR DEVIATIONS AS MAY OCCUR OR BE NECESSARY IN CONSTRUCTION.
MINOR DETAILS NOT SHOWN.

1. ONE 1.50 OUTLET WITH 2.50 PIPING AND SKIVEL LOCATED IN CENTER BUMPER TRAY
2. BLUE SEA FORD 5000T SHIMBEL LOCATED ON DRIVER SIDE OF THE CAB
3. AIR INLET WITH DISCONNECT COUPLING IN THE DRIVER SIDE STEPNELL
4. BATTERY CHARGER LOCATED IN COMPARTMENT PER SHOP ORDER
5. BATTERY CHARGE INDICATOR LOCATED ON THE DRIVER SIDE SEAT RISER
6. FOUR ADJUSTABLE SHELVES IN COMPARTMENTS PER SHOP ORDER
7. TWO FLOOR MOUNTED SLIDE-OUT TRAY IN COMPARTMENT PER SHOP ORDER
8. TWO SLIDE-OUT TOOLBOARDS IN COMPARTMENTS PER SHOP ORDER

CUSTOMER APPROVAL

APPROVED BY:

DATE:

CHASSIS DATA

MAKE

PIERCE

MODEL

ENFORCER

Pierce MANUFACTURING INC.

TITLE Pierce PUC Pumper Approval Drawing

FOR Pierce Field Unit

Appleton, Wisconsin

DWG NO.

37014AD

JOB NO. 37014

SCALE 1:24

DATE

DRAWN BY MMF

31 JAN22

CHECKED BY COL

03 FEB22

SHEET SIZE D

SHEET NO. 1 OF 1