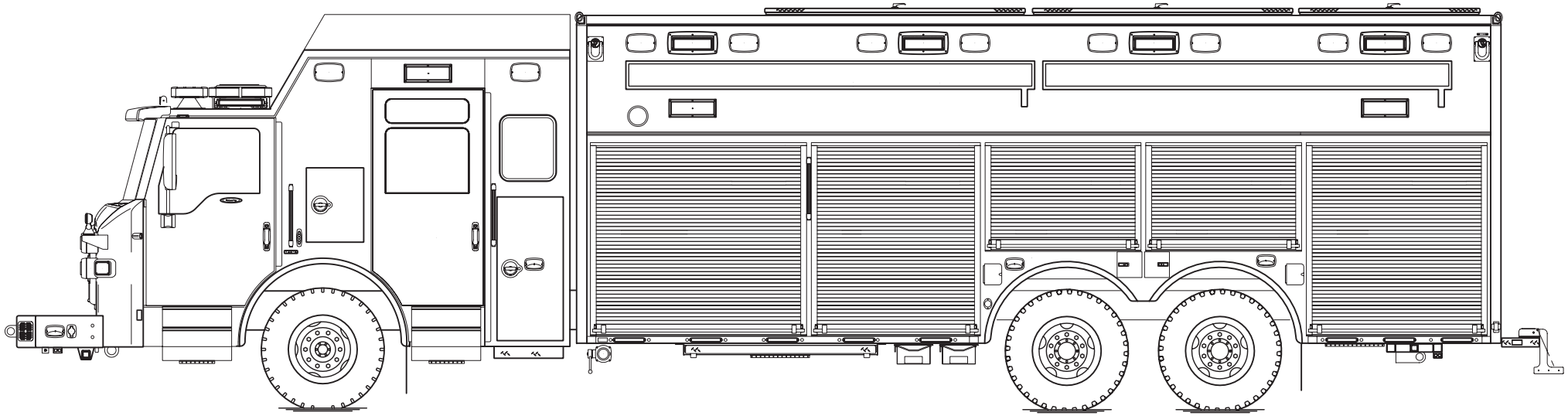




PERFORM. LIKE NO OTHER.™

Walkersville Volunteer Rescue Company, MD

Velocity® Non-Walk-In Heavy-Duty Rescue



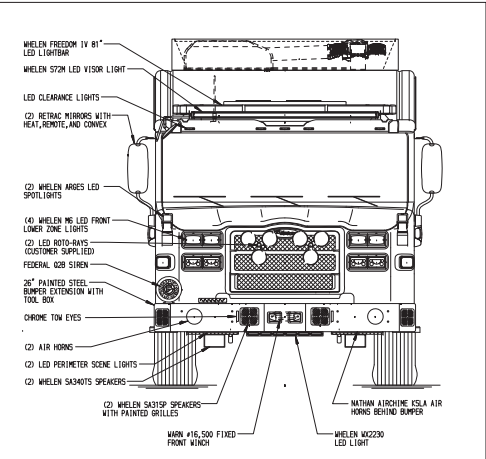
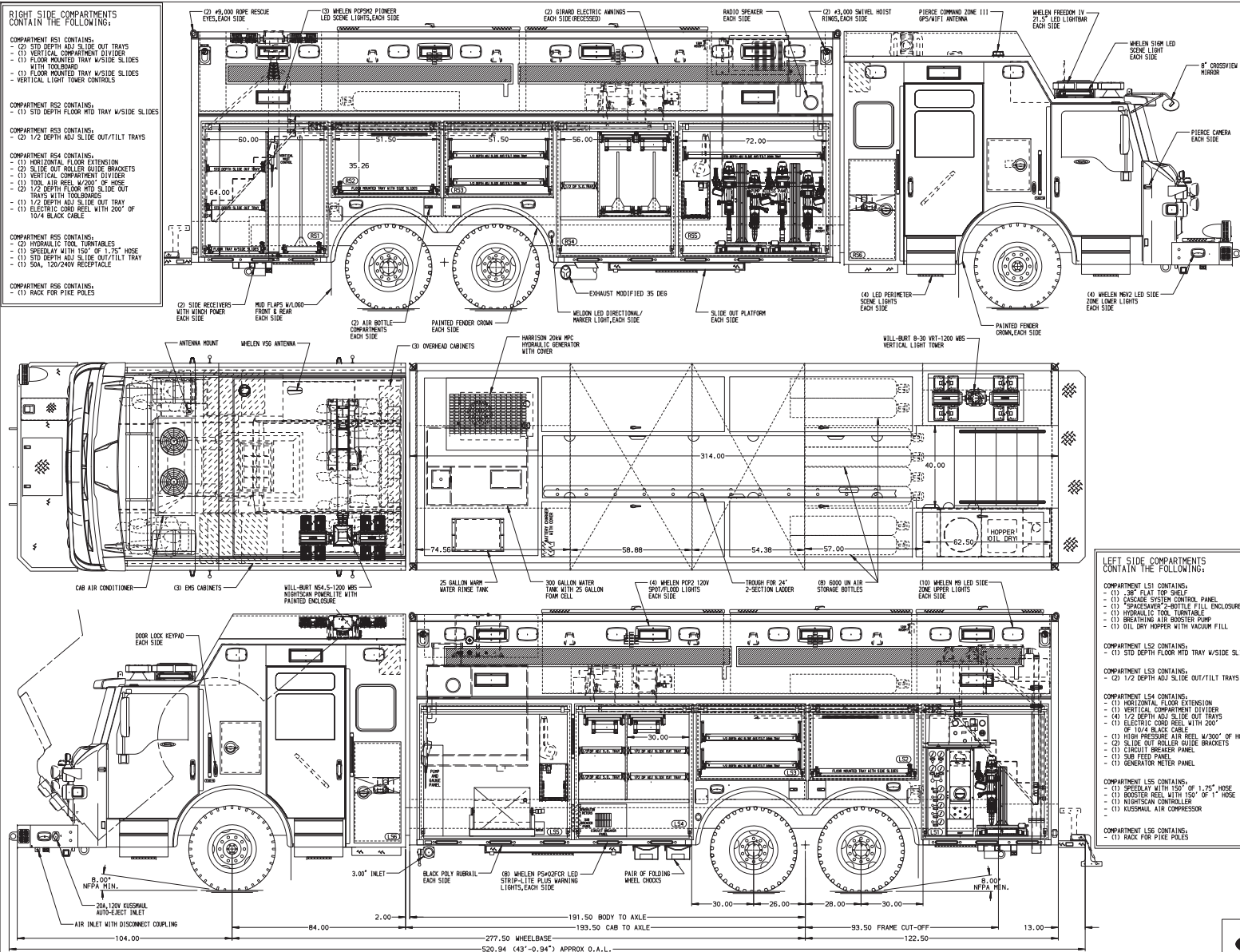
Chassis

Chassis	84" Velocity cab w/20" raised roof
Seating Capacity	5
Overall Height	11' 11"
Overall Length	43' 7"
GVW Rating	68,000 lb
Safety	Side Roll and Frontal Impact Protection
Front Axle	TAK-4® Independent Front Suspension , 24,000 lb
Rear Axle	TAK-4 T3™ Independent Rear Suspension , 44,000 lb
Engine	Cummins X15, 605 hp, 1850 lb-ft
Electrical System	Command Zone™ Advanced Electronics System

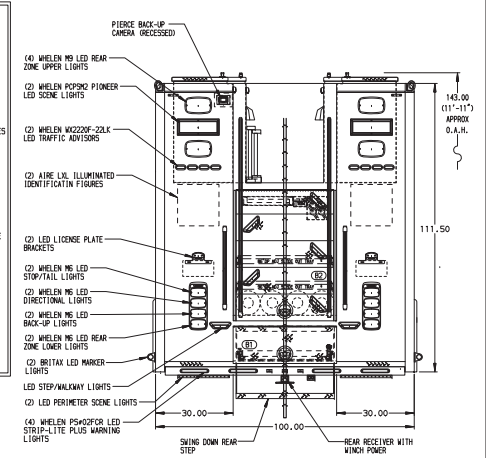
Body

Material	Aluminum
Shelving	Adjustable shelves, trays and tool boards up to 500 lb
Doors	Rollup
Comfort	(4) Girard 12 VDC electric awnings
Anchors	(4) Roof corner-mounted, 9,000 lb (4) Swivel side-mounted, 3,000 lb
Generator	Harrison Hydraulic 20 kW, 120/240
Safety	Will-Burt Night Scan and Vertical Tower Mast
Breathing Air	Breathing air system with 8 UN storage vessels, RSP fill enclosure and booster pump

- RIGHT SIDE COMPARTMENTS CONTAIN THE FOLLOWING:**
- COMPARTMENT R51 CONTAINS:**
- (1) STD DEPTH FLOOR MTD TRAY W/SIDE SLIDES
 - (1) FLOOR MOUNTED TRAY W/SIDE SLIDES WITH TOOLBOARD
 - (1) VERTICAL LIGHT TOWER CONTROLS
- COMPARTMENT R52 CONTAINS:**
- (1) STD DEPTH FLOOR MTD TRAY W/SIDE SLIDES
- COMPARTMENT R53 CONTAINS:**
- (1) 1/2 DEPTH ADJ SLIDE OUT/TILT TRAYS
- COMPARTMENT R54 CONTAINS:**
- (1) HORIZONTAL FLOOR EXTENSION
 - (2) SLIDE OUT ROLLER GUIDE BRACKETS
 - (1) VERTICAL COMPARTMENT DIVIDER
 - (1) TOOL AIR REEL W/200' OF HOSE
 - (1) 1/2 DEPTH ADJ SLIDE OUT/TILT TRAYS WITH TOOLBOARDS
 - (1) 1/2 DEPTH ADJ SLIDE OUT/TILT TRAY
 - (1) ELECTRIC CORD REEL WITH 200' OF 10/4 BLACK CABLE
- COMPARTMENT R55 CONTAINS:**
- (1) HYDRAULIC TOOL, TURNTABLES
 - (1) SPEEDLAY WITH 150' OF 1.25" HOSE
 - (1) STD DEPTH ADJ SLIDE OUT/TILT TRAY
 - (1) SNA, 120V/200V RECEPTACLE
- COMPARTMENT R56 CONTAINS:**
- (1) RACK FOR FIRE POLES



- REAR COMPARTMENT CONTAINS THE FOLLOWING:**
- COMPARTMENT R1 CONTAINS:**
- (1) FLOOR MOUNTED TRAY W/SIDE SLIDES
- COMPARTMENT R2 CONTAINS:**
- (1) 85\"/>



- LEFT SIDE COMPARTMENTS CONTAIN THE FOLLOWING:**
- COMPARTMENT L51 CONTAINS:**
- (1) 38\"/>
- COMPARTMENT L52 CONTAINS:**
- (1) STD DEPTH FLOOR MTD TRAY W/SIDE SLIDES
- COMPARTMENT L53 CONTAINS:**
- (2) 1/2 DEPTH ADJ SLIDE OUT/TILT TRAYS
- COMPARTMENT L54 CONTAINS:**
- (1) HORIZONTAL FLOOR EXTENSION
 - (1) VERTICAL COMPARTMENT DIVIDER
 - (4) 1/2 DEPTH ADJ SLIDE OUT TRAYS
 - (1) ELECTRIC CORD REEL WITH 200' OF 10/4 BLACK CABLE
 - (1) HIGH PRESSURE AIR REEL W/300' OF HOSE
 - (2) SLIDE OUT ROLLER GUIDE BRACKETS
 - (1) CIRCUIT BREAKER PANEL
 - (1) SUN FLOOD PANEL
 - (1) GENERATOR METER PANEL
- COMPARTMENT L55 CONTAINS:**
- (1) SPEEDLAY WITH 150' OF 1.25\"/>
- COMPARTMENT L56 CONTAINS:**
- (1) NIGHTSCAN CONTROLLER
 - (1) RUSSMAN AIR COMPRESSOR
- COMPARTMENT L57 CONTAINS:**
- (1) RACK FOR FIRE POLES

NOTE

DIMENSIONS SHOWN ARE APPROXIMATE AND ARE SUBJECT TO MINOR DEVIATIONS AS MAY OCCUR OR BE NECESSARY IN CONSTRUCTION.

MINOR DETAILS NOT SHOWN.

- NOTES:**
1. WATEROUS CRY-2 250 GPM WATER PUMP
 2. 15/20A, 120V DUPLEX RECEPTACLE LOCATED BEHIND OFFICER'S SEAT
 3. BRIGGS 5/8\"/>

11. 15/20A, 120V DUPLEX RECEPTACLE LOCATED IN EACH SIDE BODY COMPARTMENT

12. COMPARTMENT VENTILATION SYSTEM

13. AERON EXTRACTOR SINGLE AGENT FAN SYSTEM

14. 12V FAN IN EACH FORWARD AND CENTER HATCH COMPARTMENTS

CLEAR DOOR WIDTH KEY

DOOR TYPE	WIDTH	REMARKS
DRIVER ROLL-UP DOORS	2'-1 1/4"	
DRIVER ROLL-UP DOORS	2'-1 1/4"	
PIERCE DOUBLE LIFT DOORS	2'-1 1/4"	
PIERCE LIFT-UP LAP DOORS	2'-1 1/4"	

(EX: 60\"/>

Pierce MANUFACTURING INC.		JOB NO. 38076
TITLE HEAVY DUTY RESCUE		SCALE 1:24
FOR NON-WALK-IN WITH 300 GAL WATER TANK AND 25 GAL FOAM		DATE 07NOV22
WALKER/RESERVE VOLUNTEER RESCUE COMPANY		CHECKED BY AZU
BID #673		29NOV22
GUESSFORD, RODNEY		SHEET NO. D
DWG NO. 38076AD		SHEET 1 OF 1