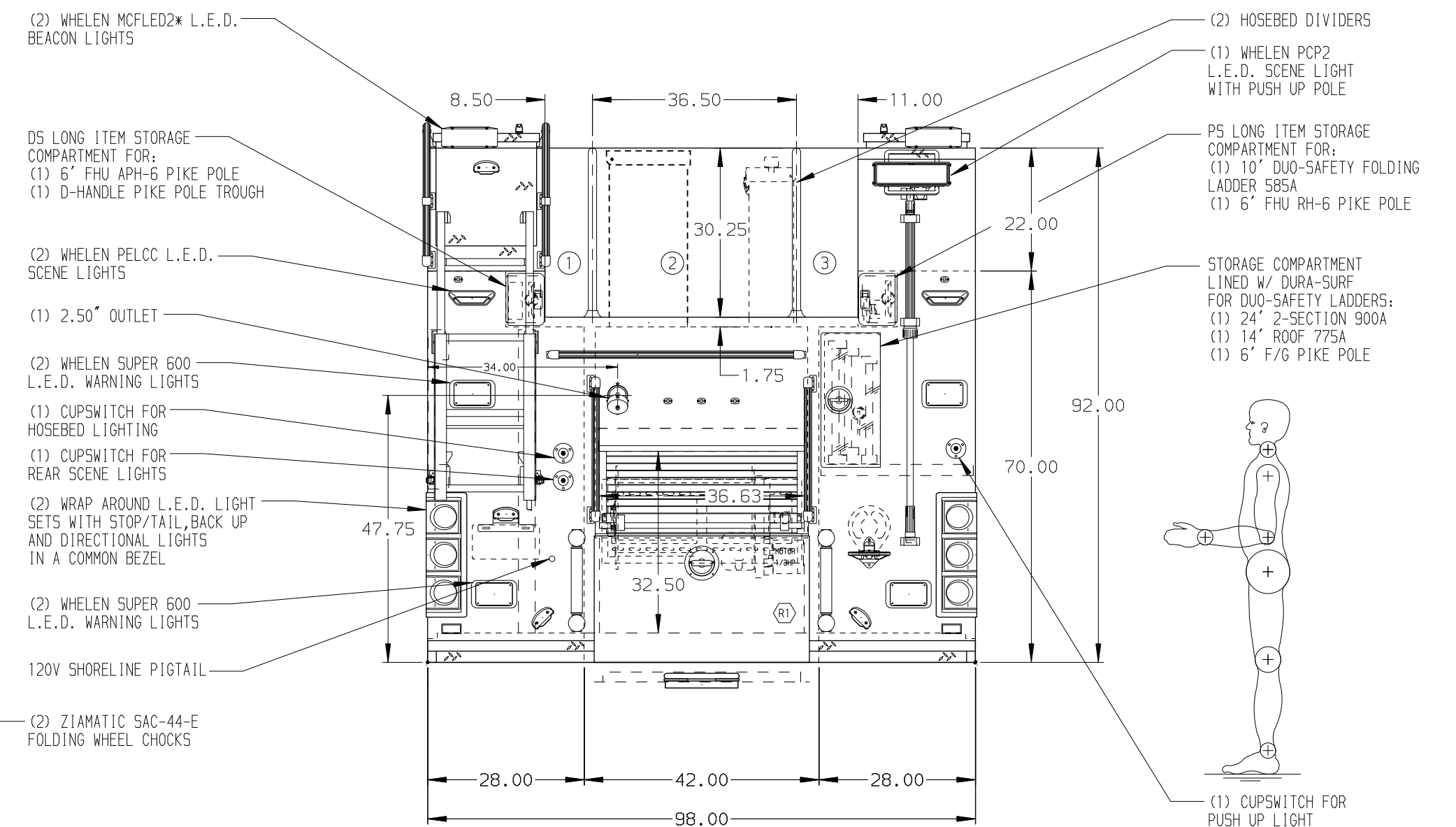


- HOSEBED CAPACITIES
- ① 250' OF 1.75" D.J. HOSE
 - ② 1000' OF 5.00" D.J. HOSE
 - ③ 250' OF 2.50" D.J. HOSE



ALUMINUM BODY

FRONTAL IMPACT AND SIDE ROLL PROTECTION

NOTE

DIMENSIONS SHOWN ARE APPROXIMATE AND ARE SUBJECT TO MINOR DEVIATIONS AS MAY OCCUR OR BE NECESSARY IN CONSTRUCTION. MINOR DETAILS NOT SHOWN.

1. VOGEL LUBE SYSTEM PUMP LOCATED IN PUMP AREA
2. BATTERY CHARGER LOCATED BEHIND DRIVERS SEAT
3. ONE SWING OUT TOOL BOARD LOCATED IN COMPARTMENT P2
4. THREE ADJUSTABLE FULL WIDTH/FULL DEPTH SHELF W/ SPECIAL SIDES IN COMPARTMENT P3
5. ONE ADJUSTABLE FULL WIDTH/FULL DEPTH SHELF IN COMPARTMENT D2
6. ONE ADJUSTABLE HEIGHT SLIDE-OUT TRAY LOCATED IN COMPARTMENTS D1 & P1; TWO IN D3
7. ONE VERTICAL BOLT-IN PARTITION BETWEEN COMPARTMENTS D1-R1 & P1-R1
8. TWO SETS OF HORIZONTAL EQUIPMENT MOUNTING TRACKS LOCATED IN COMPARTMENT D1 & P1
9. 140 CFM COMPRESSED AIR FOAM SYSTEM
10. HUSKY 12 FOAM SYSTEM

11. HANWAY BOOSTER REEL MODEL EF4032-19-20 LOCATED IN COMPARTMENT R1 WITH CAPACITY FOR 150' OF 1.00" BOOSTER HOSE
12. ALUMINUM PEGBOARD LOCATED ON REAR WALL OF COMPARTMENT P2
13. ONE DUPLEX RECEPTACLE LOCATED IN COMPARTMENT P3
14. ANDOR DUAL L.E.D. LIGHT STRIPS LOCATED ON EACH SIDE OF HOSEBED
15. ANDOR L.E.D. LIGHT STRIP LOCATED AT FRONT OF HOSEBED

REV	DATE	BY	CH	ARROW XT
29FEB16	COL	SHA	MAKE	
04FEB16	COL	SHA	PIERCE	
09DEC15	COL	SMA	MODEL	

		JOB NO.	29547 01-03
		SCALE	1:24
		DATE	
TITLE		DRAWN BY	COL
FOR		CHECKED BY	BZI
DWG NO.		SHEET SIZE	D
		SHEET NO.	1 OF 1

1500-D-550 500 WATER W/20 & 30 GAL FOAM CELLS, 177" PUC, (4)XLAYS, (1) DEADLAY, LADDERS THRU BODY PS SPOKANE CITY SPOKANE, WASHINGTON

29547AD