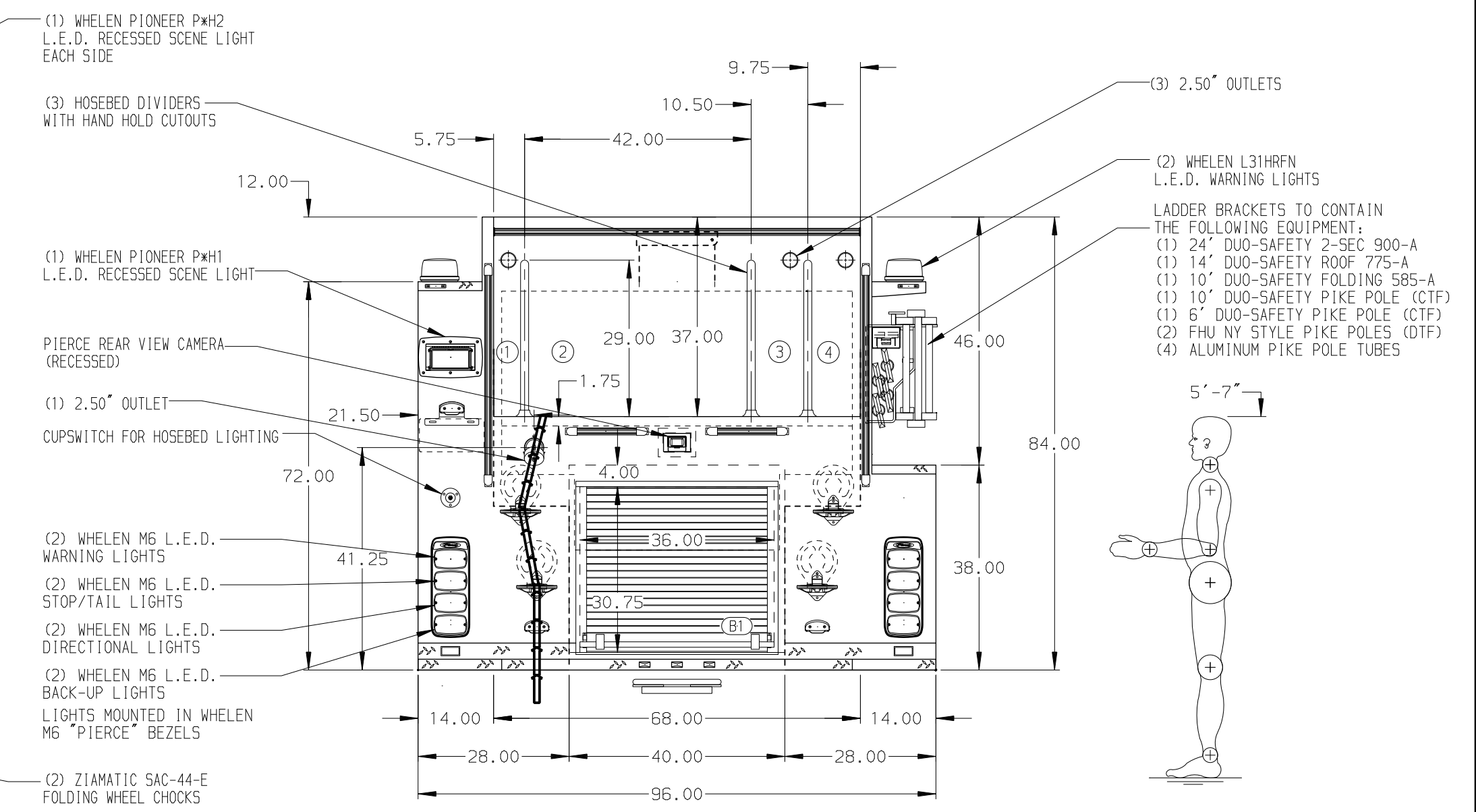


- HOSEBED CAPACITIES
- ① 300' OF 1.75" HOSE
  - ② 1000' OF 5.00" HOSE
  - ③ 300' OF 2.50" HOSE
  - ④ 300' OF 2.50" HOSE



ALUMINUM BODY      MAXIMUM O.A.H. 124.00"

**NOTE**  
DIMENSIONS SHOWN ARE APPROXIMATE AND ARE SUBJECT TO MINOR DEVIATIONS AS MAY OCCUR OR BE NECESSARY IN CONSTRUCTION. MINOR DETAILS NOT SHOWN.

- 1. AIR INLET WITH DISCONNECT COUPLING ON D.S. PUMP PANEL
- 2. BATTERY CHARGER LOCATED BEHIND DRIVER'S SEAT
- 3. DUAL L.E.D. LIGHT STRIPS LOCATED IN HOSE BED

REV	DATE	BY	CH	ENFORCER
040CT19	LST	DTS		CHASSIS DATA
27AUG19	MWA	DTS		MAKE
19JUL19	LST	DTS		PIERCE
17JUN19	LST	AZA		MODEL

		JOB NO.	34067
		SCALE	01-02
<b>2000-D-750P, 730 GAL OF WATER W/ 20 GAL FOAM CELL</b>		DRAWN BY	LST
<b>152" BODY, LADDER BRACKETS, (2) CROSSLAYS</b>		CHECKED BY	AZA
<b>FOR EAST FARMINGDALE FIRE DEPARTMENT</b>		SHEET SIZE	D
<b>FOR EAST FARMINGDALE, NEW YORK</b>		SHEET NO.	1 OF 2
<b>DWG NO. 34067AD-SH1</b>			