

# PUMPER BODY

Long Aluminum 2nd Gen Pumper

## CHASSIS

Enforcer Chassis

## CHASSIS AXLE, FRONT, CUSTOM

19,500 Lb TAK-4 Axle

## AXLE, REAR

24,000 Lb Dana Axle

## ENGINE

450 HP Cummins L9 Engine

## TRANSMISSION

Allison 5th Gen, 3000 EVS P

## BUMPER

26" Extended Stainless Steel

## CAB

7010 Enforcer Cab

## BODY WATER TANK

750 Gallon New York Style Water Tank

## COMPT, PUMPER, REAR

30.75" FF RollUp, 25.88" Deep Rear Compt

## COMPT, PUMPER, LEFT SIDE

161" RollUp Full Height & Depth Front & Rear

## COMPT, PUMPER, RIGHT SIDE

161" RollUp Full Height Front & Rear FDLER

## FIRE SUPPRESSION PUMPHOUSE

45" Control Zone Top Mount

## PUMP

1500 GPM Waterous CSU

## CROSSLAYS, 1.50"

1.50" Crosslays Not Required

## CROSSLAYS, 2.50"

(1) 2.50" Standard Capacity

## SPEEDLAYS

(2) 1.50" W/ Poly Tray

## GENERATOR

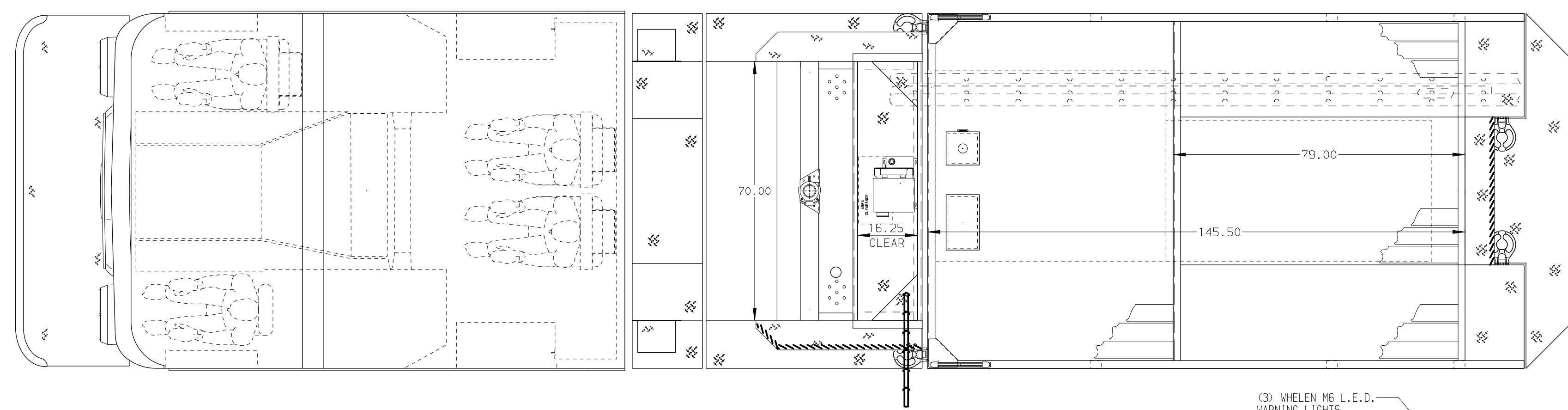
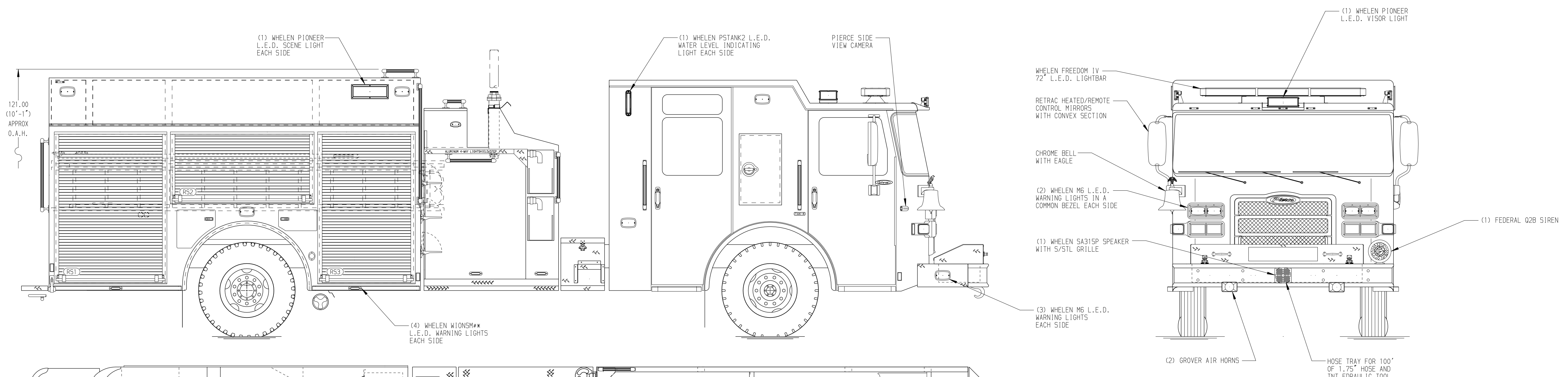
Generator Not Required

## Foam System

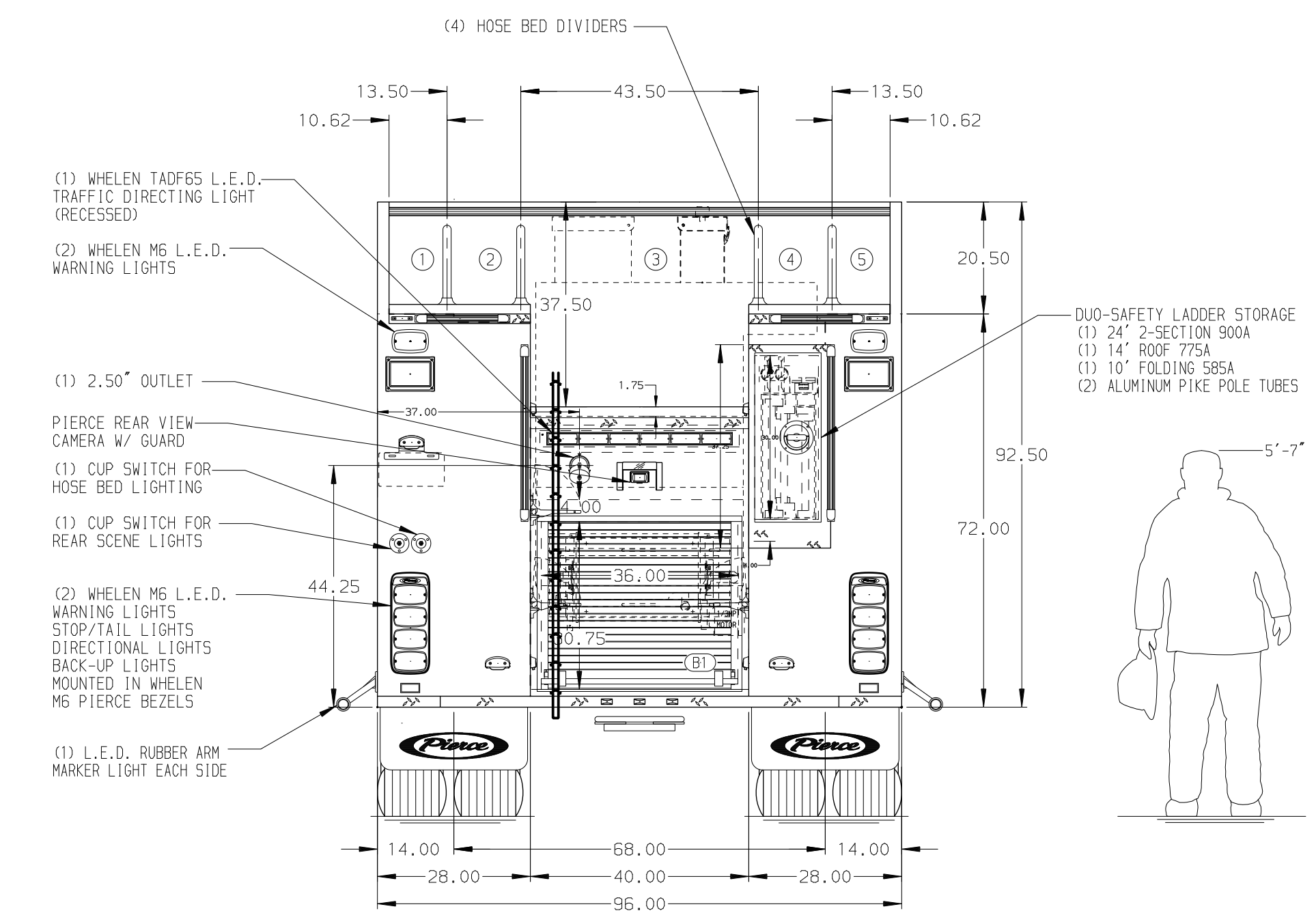
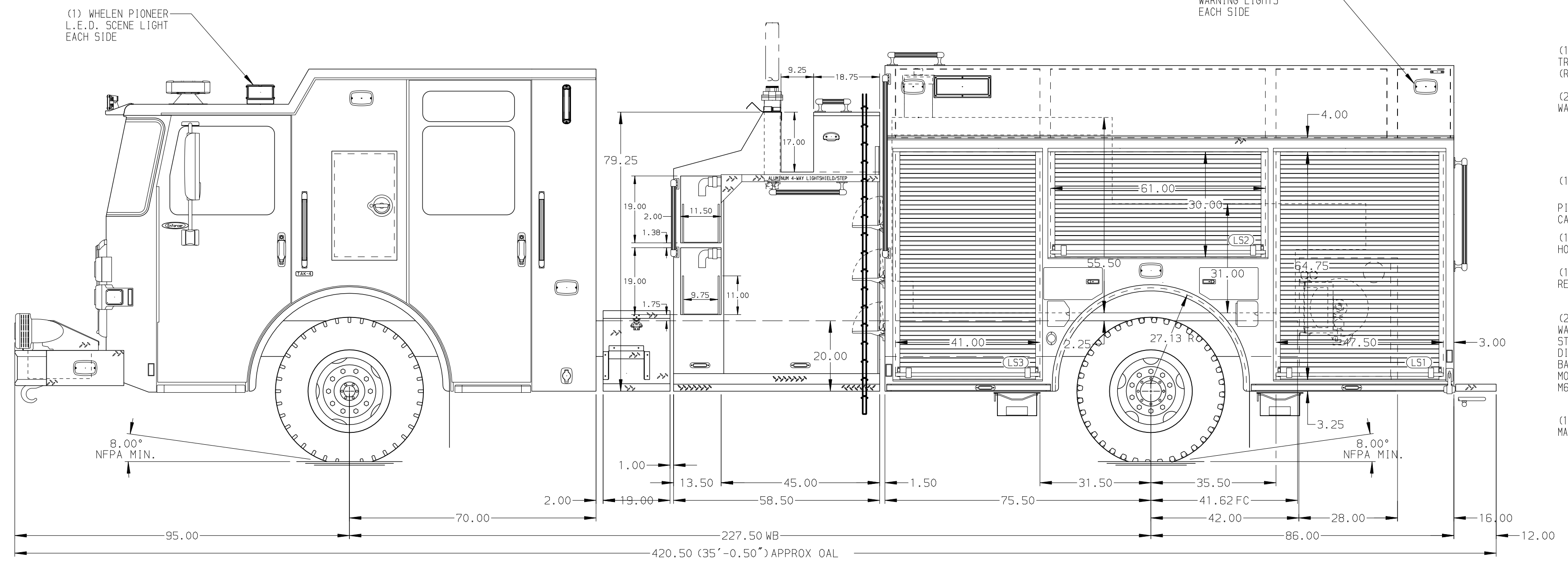
Husky 3 Single Agent Foam System

## Foam Cell

20 Gallon Foam Cell, Not Reduced Water



HOSEBED CAPACITY	
BED 1	OPEN AREA
BED 2	250' OF 2.50" D.J. POLY HOSE
BED 3	1000' OF 5.00" D.J. POLY HOSE
BED 4	250' OF 2.50" D.J. POLY HOSE
BED 5	OPEN AREA



**NOTE**  
DIMENSIONS SHOWN ARE APPROXIMATE AND ARE SUBJECT TO MINOR DEVIATIONS AS MAY OCCUR OR BE NECESSARY IN CONSTRUCTION. MINOR DETAILS NOT SHOWN.

- ONE 1.50 OUTLET WITH 2.00 PIPING AND SWIVEL LOCATED IN BUMPER TRAY
- SHORELINE RECEPTACLE WITH KUSSMAUL SUPER AUTO-EJECT LOCATED ON DRIVER SIDE OF CREW CAB
- AIR INLET/OUTLET WITH DISCONNECT COUPLING ON THE DRIVER SIDE PUMP PANEL
- BATTERY CHARGER LOCATED BEHIND DRIVER'S SEAT
- BATTERY CHARGE INDICATOR LOCATED ON THE DRIVER SIDE SEAT RISER
- EIGHT ADJUSTABLE SHELVES LOCATED PER SHOP ORDER
- THREE FLOOR MOUNTED SLIDE-OUT TRAYS LOCATED PER SHOP ORDER
- TWO TILTING/SLIDE-OUT TRAYS LOCATED PER SHOP ORDER
- ONE VERTICAL PARTITION LOCATED PER SHOP ORDER
- ONE SWING-OUT TOOLBOARD LOCATED PER SHOP ORDER

- ALUMINUM PEGBOARD LOCATED PER SHOP ORDER
- TWO PIKE POLE TUBES MOUNTED TRANSVERSE BETWEEN LS1/RS1
- TWO 120V DUPLEX RECEPTACLES LOCATED PER SHOP ORDER
- ONE 120V RECEPTACLE LOCATED PER SHOP ORDER
- HANNAY BOOSTER REEL MODEL EP64130-17-18 WITH CAPACITY FOR 150' OF 0.75" BOOSTER HOSE

REV	DATE	BY	CH	ENFORCER
1	11JUN20	COL	GKH	PIERCE
2	30APR20	COL	GKH	MODEL

		JOB NO.	34934
		SCALE	DATE
TITLE	Pierce Pumper Approval Drawing	DRAWN BY	COL
FOR	Greenville Fire Department	CHECKED BY	NPE
DWG NO.	34934AD	SHEET SIZE	SHEET NO.
		D	1 OF 1