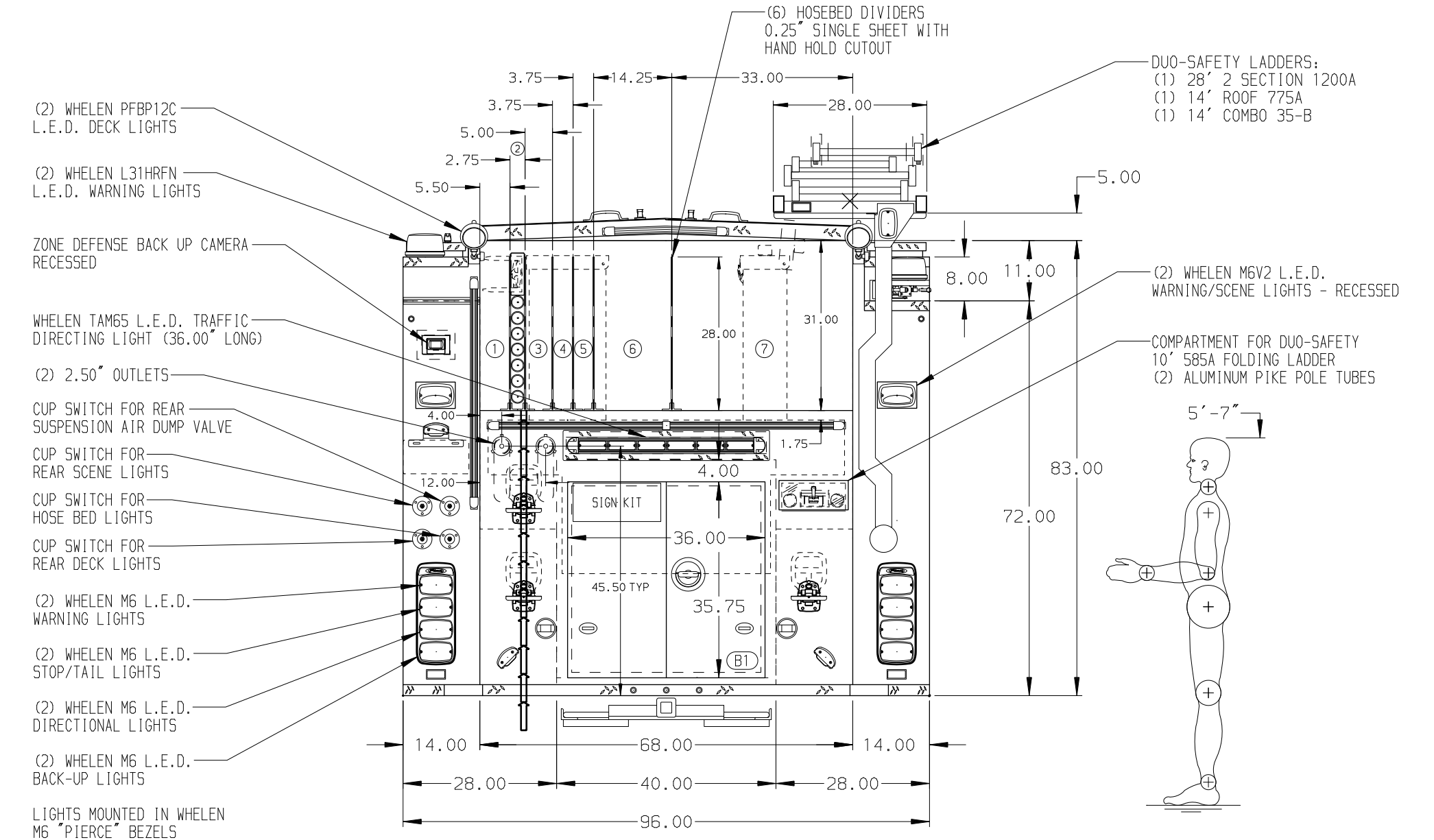


- HOSEBED CAPACITIES
- ① OPEN BAY WITH EQUIPMENT STOP
 - ② PIKE POLE/TRASH HOOK STORAGE
 - ③ 200' OF 2.50\"/>

FOUR SECTION ALUMINUM TREADPLATE HOSE BED COVER



ALUMINUM BODY MAXIMUM O.A.H. 125.00" MAXIMUM O.A.L. 373.00" SIDE ROLL AND FRONTAL IMPACT PROTECTION

NOTE
DIMENSIONS SHOWN ARE APPROXIMATE AND ARE SUBJECT TO MINOR DEVIATIONS AS MAY OCCUR OR BE NECESSARY IN CONSTRUCTION. MINOR DETAILS NOT SHOWN.

- 1. PAC TRAC IN CAB PER SHOP ORDER
- 2. BATTERY CHARGER LOCATED IN CREW CAB FORWARD FACING SEAT RISER
- 3. BATTERY CHARGER INDICATOR LOCATED ON DRIVER'S SEAT RISER
- 4. L.E.D. LIGHT STRIP LOCATED IN HOSE BEDS PER SHOP ORDER
- 5. REVERSED HINGED DOOR ON COMPARTMENTS L53 AND R53
- 6. AIR INLET WITH DISCONNECT COUPLING IN DRIVER'S SIDE SEAT RISER
- 7. AIR OUTLET WITH SHUT-OFF VALVE AT LEFT SIDE PUMP PANEL

CHASSIS DATA	TITLE	2000-500 WATER/30 FOAM, 145" EXTENDED SHORT BODY CROSSLAYS, DELUGE, FOAM, HYDRAULIC LADDER RACK
MAKE	FOR	KING COUNTY FPD #2 DBA BURDEN FIRE DEPARTMENT BURDEN, WASHINGTON
MODEL	DWG NO.	36542AD-SH1
ENFORCER	REV	

Pierce MANUFACTURING INC.

JOB NO. 36542-01, -02
SCALE 1:24 DATE
DRAWN BY JRO 18AUG21
CHECKED BY AZA 24AUG21
SHEET SIZE D SHEET NO. 1 OF 2