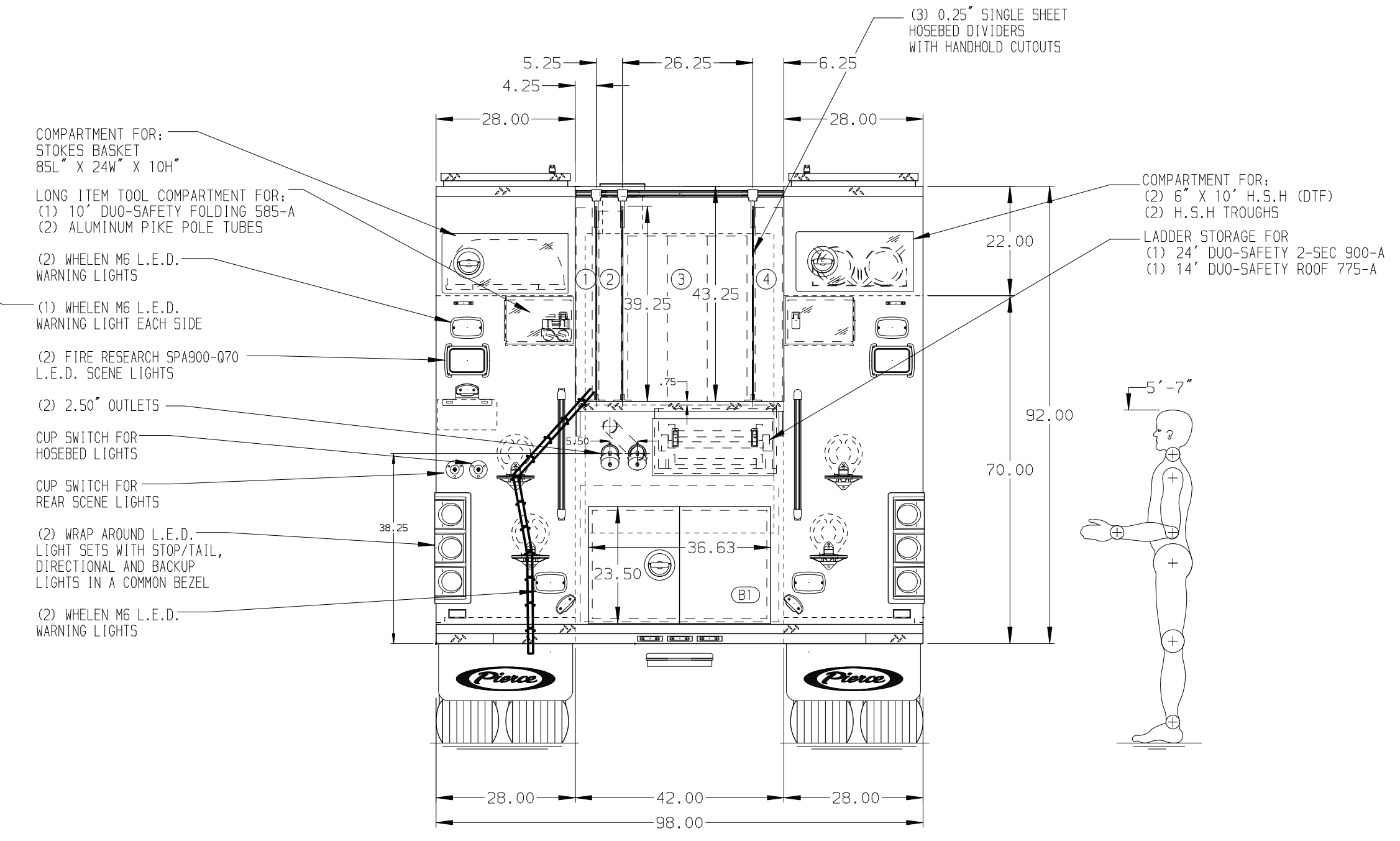
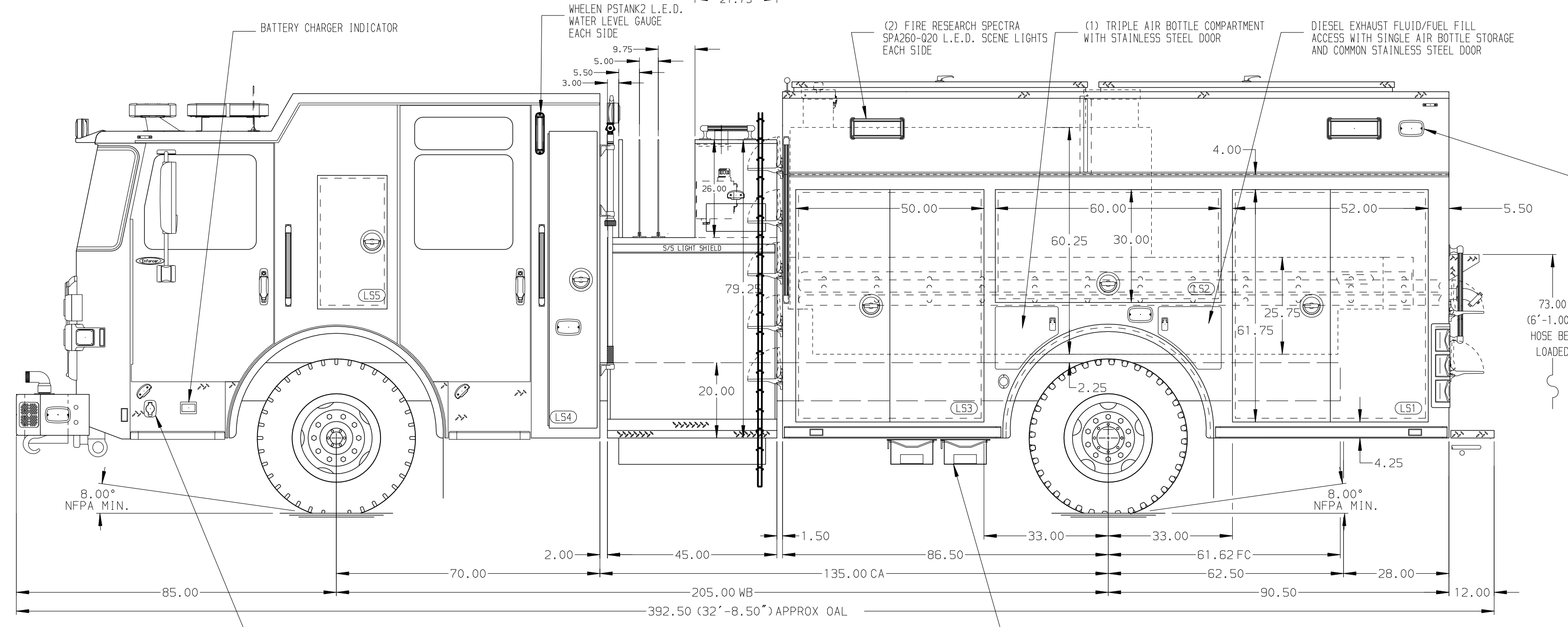


- HOSEBED CAPACITIES**
- ① 350' OF 1.75" D.J. POLY HOSE
  - ② 300' OF 2.50" D.J. POLY HOSE
  - ③ 800' OF 5.00" D.J. POLY HOSE
  - ④ 300' OF 3.00" D.J. POLY HOSE



**ALUMINUM BODY SIDE ROLL AND FRONTAL IMPACT PROTECTION**

**NOTE**  
 DIMENSIONS SHOWN ARE APPROXIMATE AND ARE SUBJECT TO MINOR DEVIATIONS AS MAY OCCUR OR BE NECESSARY IN CONSTRUCTION. MINOR DETAILS NOT SHOWN.

- 1. AIR OUTLET WITH SHUT-OFF VALVE LOCATED PER SHOP ORDER
- 2. PAC TRAC IN CAB PER SHOP ORDER
- 3. KUSSMAUL BATTERY CHARGER IN COMPARTMENT PER SHOP ORDER
- 4. DUAL L.E.D. LIGHT STRIPS LOCATED IN HOSE BED
- 5. ALL FOLDING STEPS TO BE TRIDENT WITH INTEGRATED L.E.D. LIGHT UNLESS SPECIFIED

CUSTOMER APPROVAL			
APPROVED BY:			
DATE:			
CHASSIS DATA	TITLE	1500-D-780P, 750 GAL OF WATER W/ 30 GAL FOAM CELL	
MAKE	FOR	177" HDRP BODY, LADDERS THRU TANK, (3) CROSSLAYS	
PIERCE	FOR	JESSAMINE COUNTY FIRE DISTRICT	
MODEL	FOR	NICHOLASVILLE, KENTUCKY	
ENFORCER	DWG NO.	37408AD-SH1	

<b>Pierce MANUFACTURING INC.</b>		JOB NO.	37408
		SCALE	1:24
		DATE	
		DRAWN BY	JUS
		20MAY22	
		CHECKED BY	CDU
		20MAY22	
		SHEET SIZE	D
		SHEET NO.	1 OF 2