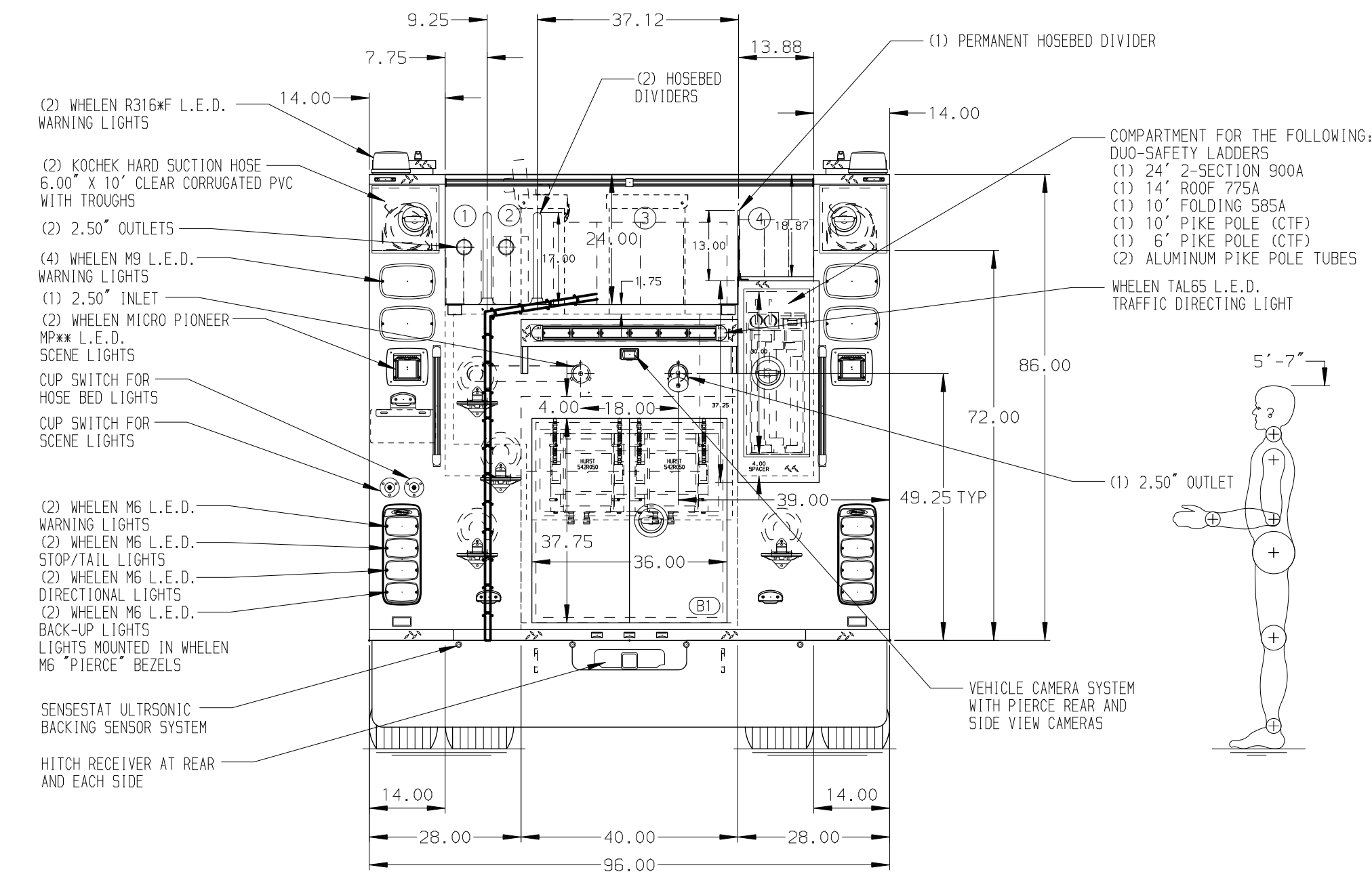
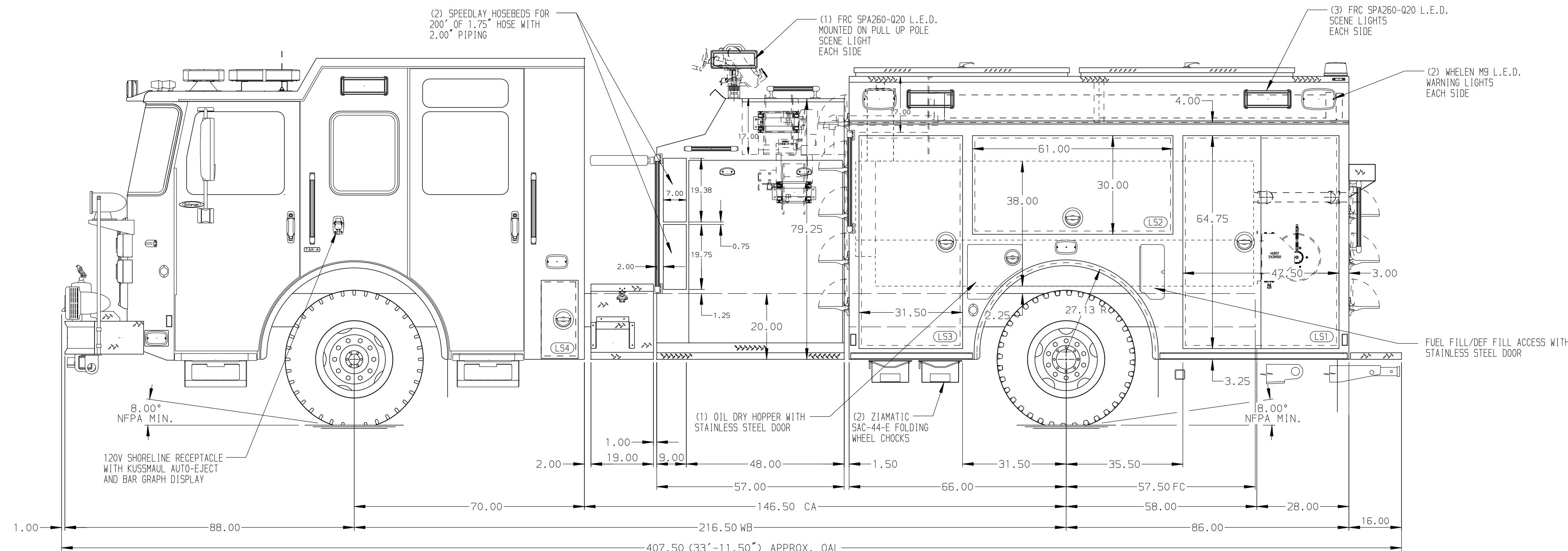


- HOSEBED CAPACITIES**
- ① - 300' OF 1.75" DJP HOSE
 - ② - 350' OF 1.75" DJP HOSE
 - ③ - 800' OF 5.00" DJP HOSE
 - ④ - 400' OF 2.50" DJP HOSE




ALUMINUM BODY MAXIMUM O.A.H. 120.00" MAXIMUM O.A.L. 415.00" SIDE ROLL AND FRONTAL IMPACT PROTECTION

NOTE
DIMENSIONS SHOWN ARE APPROXIMATE AND ARE SUBJECT TO MINOR DEVIATIONS AS MAY OCCUR OR BE NECESSARY IN CONSTRUCTION. MINOR DETAILS NOT SHOWN.

1. ONSHOT AUTOMATIC TIRE CHAINS TO BE PROVIDED AT REAR
2. AIR INLET W/DISCONNECT COUPLING LOCATED IN DRIVER'S SIDE STEP WELL
3. AIR OUTLET W/SHOT OFF VALVE LOCATED AT DRIVER'S SIDE PUMP PANEL
4. BATTERY CHARGER/COMPRESSOR WITH DISPLAY ON CHARGER LOCATED IN COMPARTMENT PER ORDER
5. DUAL L.E.D. LIGHT STRIPS LOCATED IN HOSE BED
6. L.E.D. LIGHT STRIPS LOCATED IN HATCH COMPARTMENTS PER ORDER
7. ONE HANNAY ELECTRIC REWIND CORD REEL MODEL E1516-17-18 WITH 150' OF 10/3 BLACK CABLE LOCATED IN CARGO AREA
8. ONE HANNAY ELECTRIC REWIND LOW PRESSURE AIR TOOL REEL MODEL E1514-17-17 WITH 200' OF 0.36" ID HOSE LOCATED INSIDE DRIVER'S SIDE PUMP HOUSE

REV	DATE	BY	CH	ENFORCER
27FEB24	SAM	CSH		CHASSIS DATA
14DEC23	SAM	CSH		MAKE
01SEP23	SAM	CSH		PIERCE
29JUN23	SAM	CSH		MODEL
18APR23	SAM	PHA		

 MANUFACTURING INC.	JOB NO.	37901
	SCALE	1:24
TITLE 1500-D-780P, 750G WATER W/30G FOAM, 152" PUMPER BODY (2) SPEEDLAYS, LADDERS BTWN TANK & SS, DELUGE	DRAWN BY	SAM
	CHECKED BY	PHA
FOR TARRYTOWN FIRE DEPARTMENT TARRYTOWN, NEW YORK	DWG NO.	37901AD-SH1
	SHEET SIZE	D
	SHEET NO.	1 OF 2