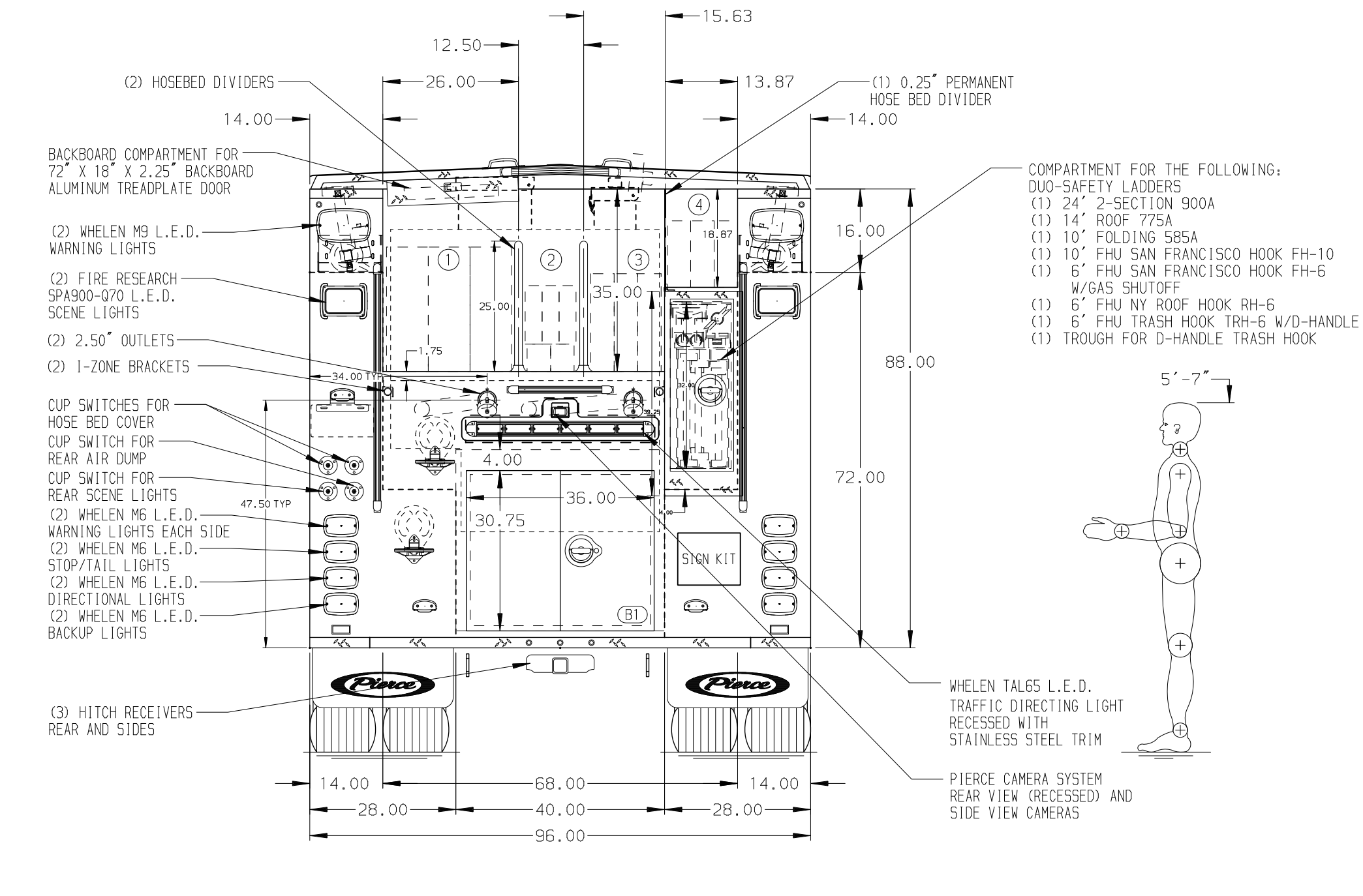


- HOSEBED CAPACITIES**
- ① - 800' OF 5.00\"/>



ALUMINUM BODY      MAXIMUM O.A.H. 118.00"      SIDE ROLL AND FRONTAL IMPACT PROTECTION

**NOTE**  
DIMENSIONS SHOWN ARE APPROXIMATE AND ARE SUBJECT TO MINOR DEVIATIONS AS MAY OCCUR OR BE NECESSARY IN CONSTRUCTION. MINOR DETAILS NOT SHOWN.

- 1. AIR INLET/OUTLET WITH DISCONNECT LOCATED AT DRIVER'S SIDE PUMP PANEL
- 2. BATTERY CHARGER MOUNTED BEHIND DRIVER'S SEAT
- 3. BATTERY CHARGER INDICATOR LOCATED ON DRIVER'S SEAT RISER
- 4. REMOTE AIR TANK DRAIN UNDER COMPARTMENT L53

REV	DATE	BY	CH	ENFORCER
1	20NOV24	SAM	ZWE	
2	15JUL24	SAM	ZWE	
3	07JUN24	SAM	ZWE	
4	15MAR24	SAM	WKL	

		JOB NO.	38700
		SCALE	DATE
TITLE	1500GPM, 780G TANK, 750G WATER, 30G FOAM	DRAWN BY	SAM
FOR	WOODSIDE FIRE PROTECTION DISTRICT	CHECKED BY	WKL
	PORTOLA VALLEY, CALIFORNIA	SHEET SIZE	SHEET NO.
DWG NO.	38700AD	D	1 OF 1