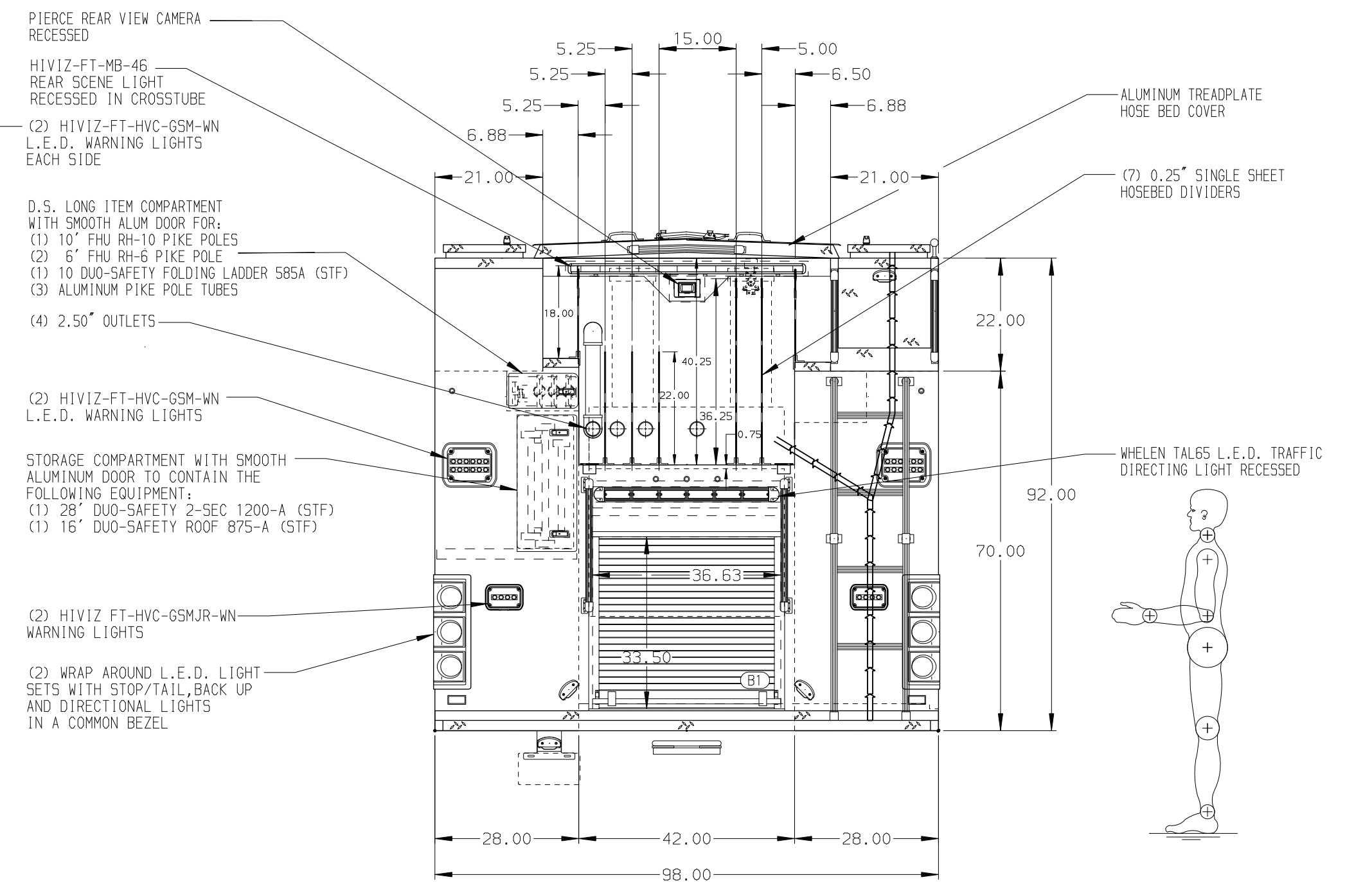


HOSEBED CAPACITIES  
HOSE BED LAYOUT PER SUPPLIED HOSEBED DRAWING

SURFACE DESIGNATION AND PATHWAY MARKINGS



ALUMINUM BODY

REFERENCE JOB 34878

SIDE ROLL AND FRONTAL IMPACT PROTECTION

NOTE  
DIMENSIONS SHOWN ARE APPROXIMATE AND ARE SUBJECT TO MINOR DEVIATIONS AS MAY OCCUR OR BE NECESSARY IN CONSTRUCTION.  
MINOR DETAILS NOT SHOWN.

1. BATTERY CHARGER LOCATED IN CREWCAB UNDER SEAT
2. BATTERY CHARGER INDICATOR LOCATED BEHIND THE DRIVER'S SEAT WITH BRACKET
3. HANNAY MODEL ECR1618-17-18 CORD REEL WITH 200' OF 10/4 CABLE IN RH2

REV	DATE	BY	CH	IMPEL FR
25NOV24	LST	EGO		CHASSIS DATA
21OCT24	LST	EGO		MAKE
06SEP24	LST	PHA		PIERCE
28JUN24	LST	NPE		MODEL

Pierce MANUFACTURING INC.		JOB NO.	38873
		SCALE	1:24
		DATE	
		DRAWN BY	LST
		CHECKED BY	NPE
		SHEET NO.	1 OF 1
		SHEET SIZE	D
		TITLE	1500 GPM, 600 GAL TANK, 570 GAL WATER, 30 GAL FOAM 214" PUC BODY, MUX
		FOR	BURNSVILLE FIRE DEPARTMENT BURNSVILLE, MINNESOTA
		DWG NO.	38873AD