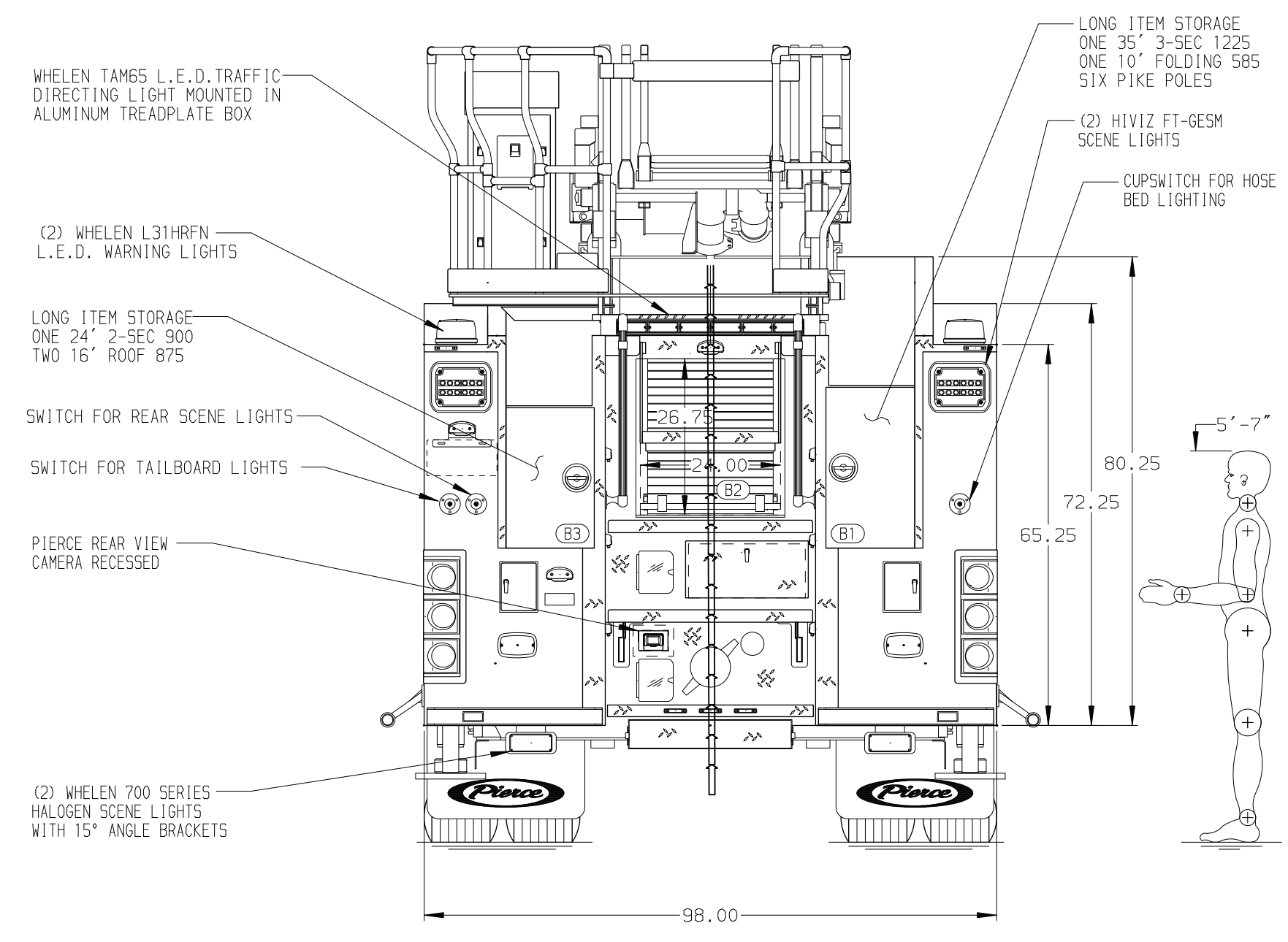


<b>BODY</b> 75' HAL Aluminum Body <b>COMPT, LEFT SIDE FRONT</b> Full Height RollUp Forward <b>COMPT, LEFT SIDE REAR</b> Full Height RollUp Rearward <b>COMPT, RIGHT SIDE FRONT</b> Full Height RollUp Forward <b>COMPT, RIGHT SIDE REAR</b> Full Height RollUp Rearward	<b>WATER TANK</b> 500 Gallon Poly Water Tank <b>Foam System</b> Foam System Not Required <b>Foam Cell</b> Foam Cell Not Required
--	---



<b>CHASSIS</b> Enforcer Chassis <b>ENGINE</b> 450 HP Cummins L9 Engine	<b>CAB</b> 7010 Enforcer Cab, Notched BUMPER 19" Extended Painted Steel	<b>AXLE, FRONT, CUSTOM</b> 21,500 Lb Meritor Axle <b>AXLE, REAR</b> 33,500 Lb Meritor Axle	<b>TRANSMISSION</b> Allison 6th Gen, 3000 EV5 P	<b>PUMPHOUSE</b> 45" Control Zone Side Mount PUMP 2000 GPM Waterous CSU	<b>CROSSLAYS, 1.50"</b> (2) 1.75" SpL. Cap 200' Key hose <b>CROSSLAYS, 2.50"</b> 2.50" SpL. Cap 200' Key Hose	<b>DEADLAY</b> 2.50" SpL. Cap 200' Key Hose <b>GENERATOR</b> Generator Not Required	<b>CUSTOMER APPROVAL</b> APPROVED BY: _____ DATE: _____		JOB NO. 38926 SCALE 1:24 DATE _____
<b>NOTE</b> DIMENSIONS SHOWN ARE APPROXIMATE AND ARE SUBJECT TO MINOR DEVIATIONS AS MAY OCCUR OR BE NECESSARY IN CONSTRUCTION. MINOR DETAILS NOT SHOWN.	1. ONE 1.50 OUTLET WITH 2.00 PIPING AND SWIVEL LOCATED IN CENTER BUMPER TRAY 2. SHORELINE RECEPTACLE WITH KUSSMAUL SUPER AUTO-EJECT LOCATED ON DRIVER SIDE STEP WELL 3. AIR INLET WITH DISCONNECT COUPLING IN THE DRIVER SIDE STEPWELL 4. RUNG LIGHTING ON AERIAL LADDER 5. BATTERY CHARGE INDICATOR LOCATED ON DRIVER SIDE SEAT RISER WITH BRACKET 6. ONE 120V RECEPTACLE IN CAB PER SHOP ORDER 7. 1.50" RAISED AERIAL PEDESTAL 8. 1500 GPM HIGH FLOW WATERWAY 9. NO AERIAL LIMITED RETRACTION 10. LIFTING EYE RESCUE ATTACHMENT AT AERIAL TIP	<b>TITLE</b> 75' HAL AERIAL LADDER AND BODY ASSEMBLY	<b>FOR</b> POLK COUNTY FIRE RESCUE BARTOW, FL	DRAWN BY LWL 08FEB23 CHECKED BY JJR 13FEB23 SHEET SIZE D SHEET NO. 1 OF 2					