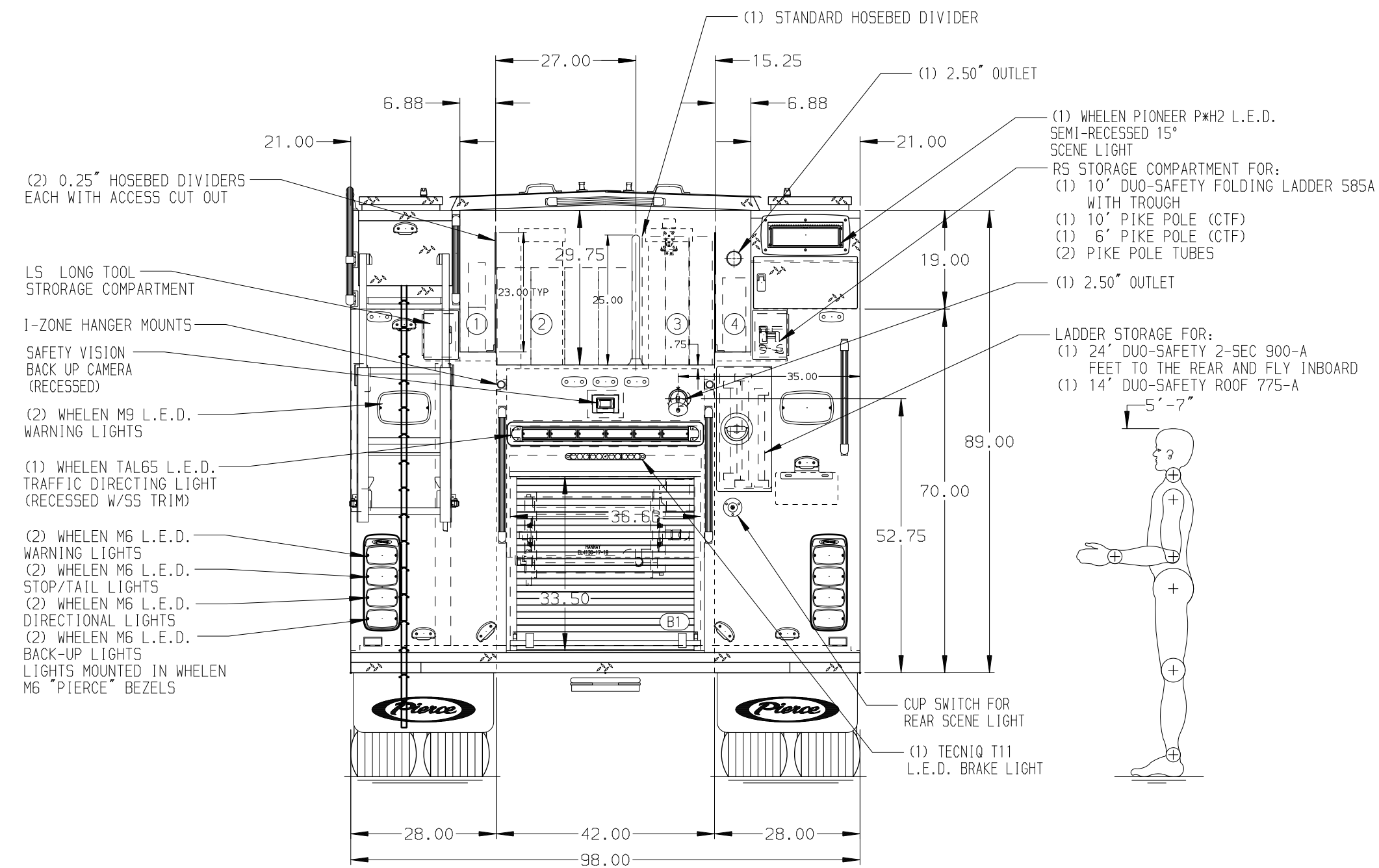


- HOSEBED CAPACITIES**
- ① - TWO 100' OF 1.75" HIGH RISE PACKS
  - ② - 800' OF 4.00" DJP HOSE
  - ③ - 800' OF 2.50" DJP HOSE
  - ④ - 150' OF 2.50" DJP HOSE



ALUMINUM BODY

MAXIMUM O.A.H. 125.0"

NOTE

DIMENSIONS SHOWN ARE APPROXIMATE AND ARE SUBJECT TO MINOR DEVIATIONS AS MAY OCCUR OR BE NECESSARY IN CONSTRUCTION. MINOR DETAILS NOT SHOWN.

- AIR INLET/OUTLET WITH DISCONNECT COUPLING LOCATED AT PUMP PANEL
- KUSSMAUL BATTERY CHARGER/AIR COMPRESSOR LOCATED PER SHOP ORDER
- BATTERY CHARGE INDICATOR LOCATED ON THE DRIVER SIDE BEHIND CAB DOOR
- SEVEN DUAL L.E.D. LIGHT STRIPS LOCATED ON COMPARTMENTS PER ORDER
- DUAL L.E.D. LIGHT STRIPS LOCATED ON HATCH COMPARTMENT PER ORDER
- NINE FULL WIDTH/DEPTH ADJUSTABLE SHELVES WITH SPECIAL SIDES LOCATED IN COMPARTMENTS PER ORDER
- ONE ADJUSTABLE SLIDE-OUT TRAY LOCATED IN COMPARTMENT PER ORDER
- ONE ADJUSTABLE TILTING SLIDE-OUT TRAY LOCATED IN COMPARTMENT PER ORDER
- FOUR FLOOR MOUNTED SLIDE-OUT TRAYS WITH 2.00" SIDES LOCATED IN COMPARTMENTS PER ORDER
- ONE SWING-OUT ALUMINUM TOOL BOARD LOCATED IN COMPARTMENT PER ORDER

- PARTITION BETWEEN COMPARTMENTS COMPARTMENTS L51/B1 & R51/B1
- TWO VERTICAL PARTITIONS LOCATED IN COMPARTMENTS PER ORDER
- HANNAY ELECTRIC REMIND 1/3 HP BOOSTER REEL MODEL: EL4130-17-18 FOR 150' OF 0.75" HOSE AND SPECIAL ROLLER IN COMPARTMENT B1

				CHASSIS DATA	TITLE	1500-D-530P, 500G WATER W/30G FOAM, 177" RESCUE PUC (3) CROSSLAYS, LADDERS IN BODY, DELUGE, BOOSTER REEL	JOB NO.	39091
				MAKE			SCALE	DATE
				PIERCE	FOR	CITY OF EL CAJON FIRE DEPARTMENT EL CAJON, CALIFORNIA	DRAWN BY	14SEP23
				MODEL	DWG NO.	39091 AD	CHECKED BY	18SEP23
				ENFORCER			SHEET SIZE	SHEET NO.
24JAN24	SAM	DTJ					D	1 OF 1
REV	DATE	BY	CH					