

**PUMPER
BODY**

Short Aluminum 2nd Gen Pumper

CHASSIS

Enforcer Chassis

**CHASSIS
AXLE, FRONT, CUSTOM**

18,000 Lb TAK-4 Axle

AXLE, REAR

27,000 Lb Dana Axle

ENGINE

510 HP Paccar MX13 Engine

TRANSMISSION

Allison 6th Gen, 4000 EVS P

BUMPER

10" Extended Painted Steel

CAB

6000 Enforcer Cab

**BODY
WATER TANK**

750 Gallon New York Style Water Tank

COMPT, PUMPER, REAR

30.75" FF Flush Rear Compt

COMPT, PUMPER, LEFT SIDE

145" Lap Full Height Front & Rear FDLER

COMPT, PUMPER, RIGHT SIDE

145" Lap Low FDLER

**FIRE SUPPRESSION
PUMPHOUSE**

45" Control Zone Side Mount

PUMP

1500 GPM Darley PSM

CROSSLAYS, 1.50"

(3) 1.50" Special Capacity

CROSSLAYS, 2.50"

2.50" Crosslay Not Required

SPEEDLAYS

Speedlays Not Required

GENERATOR

Generator Not Required

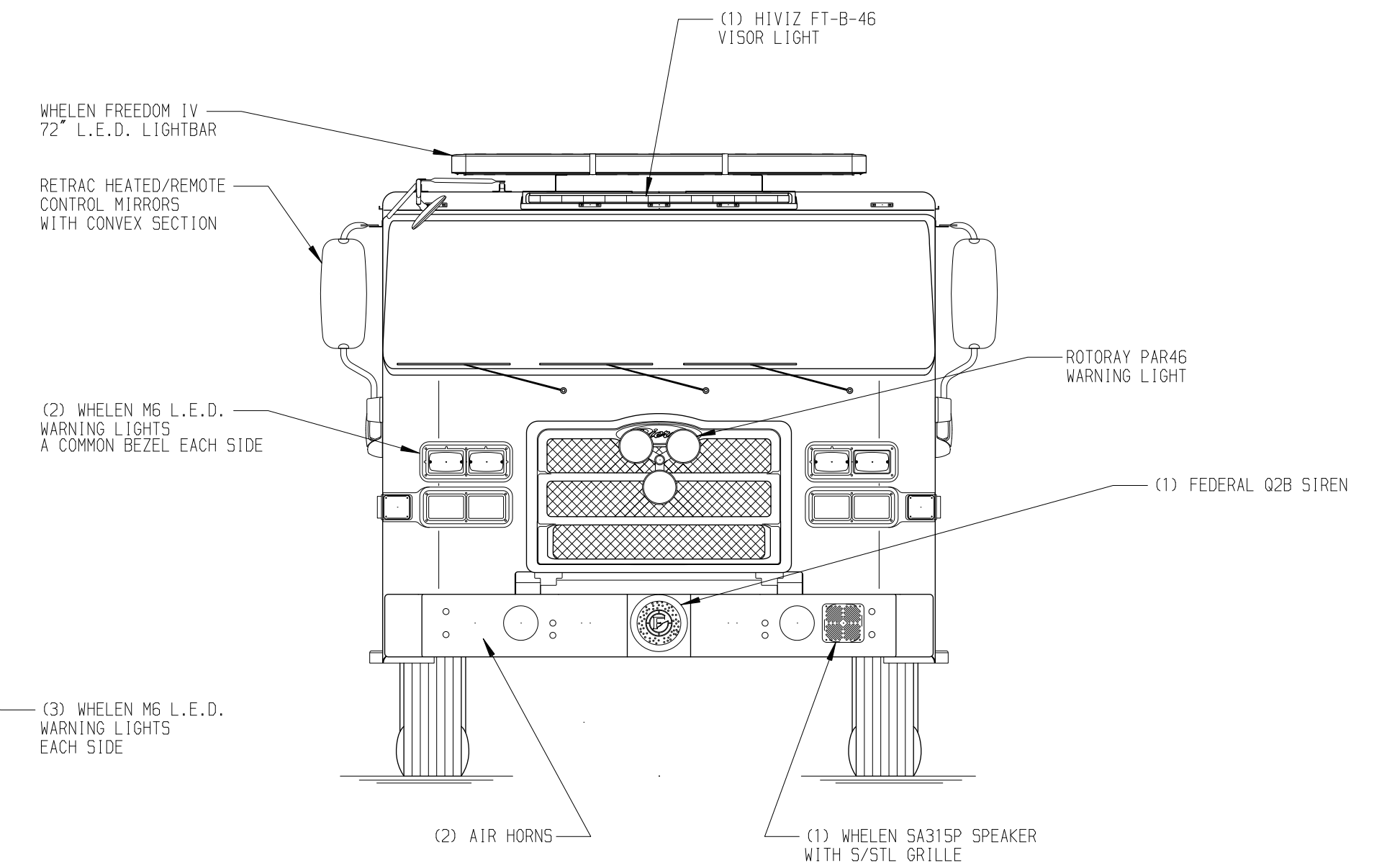
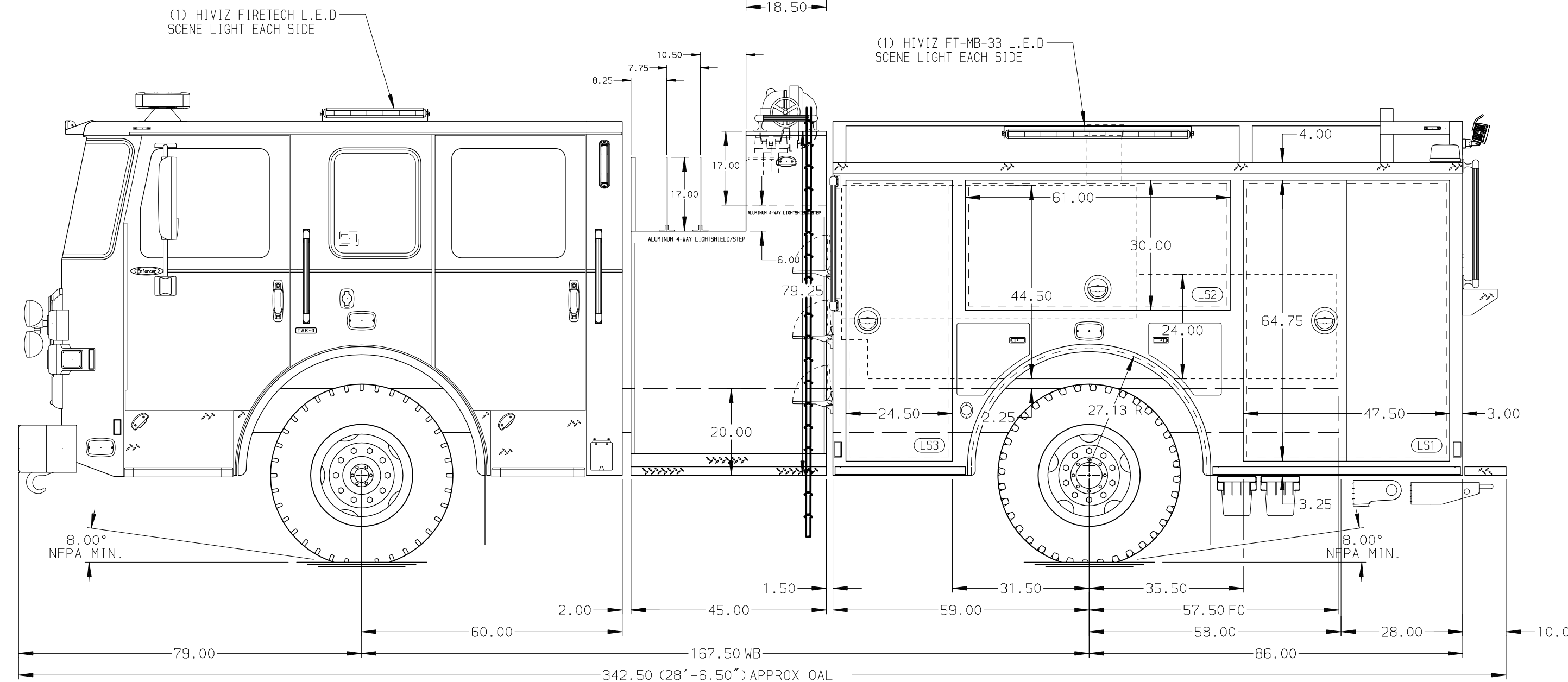
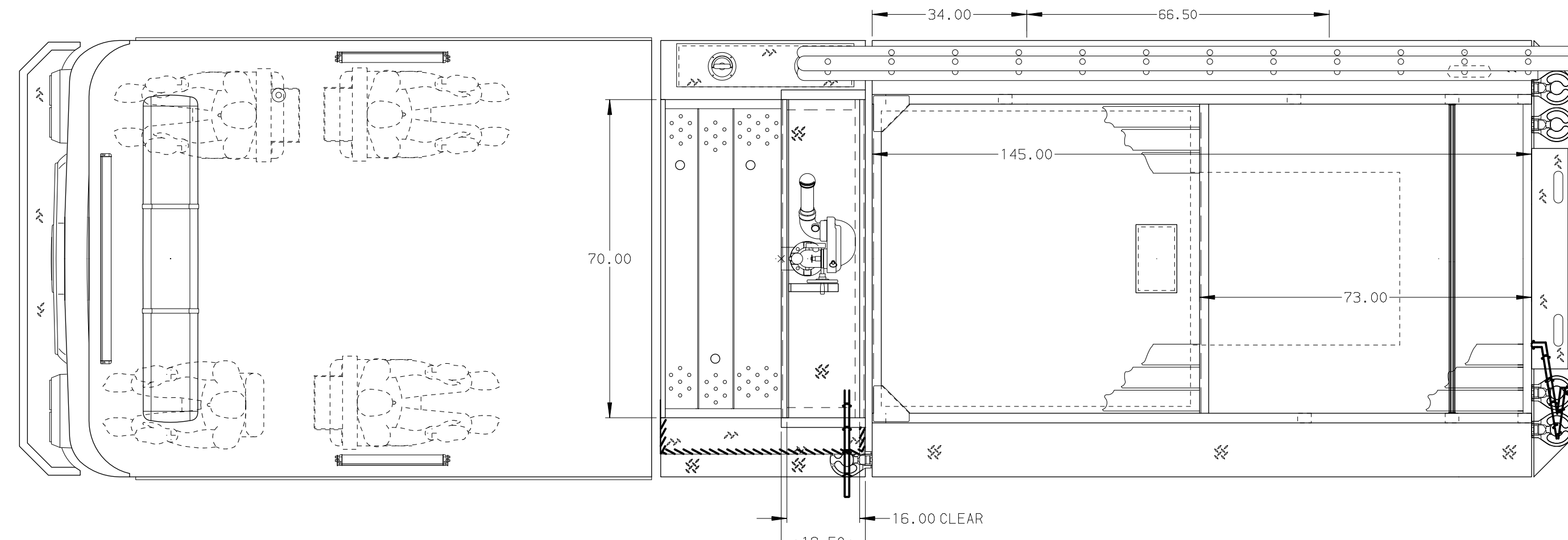
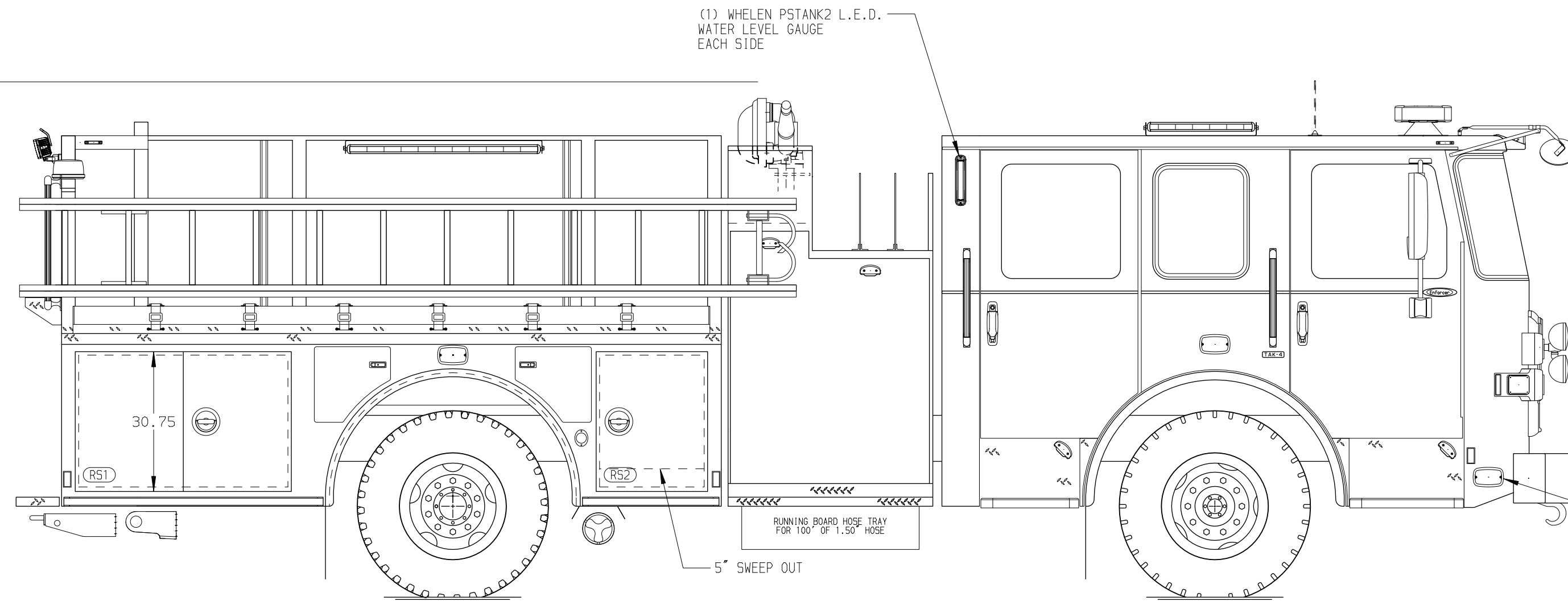
Foam System

Foam System Not Required

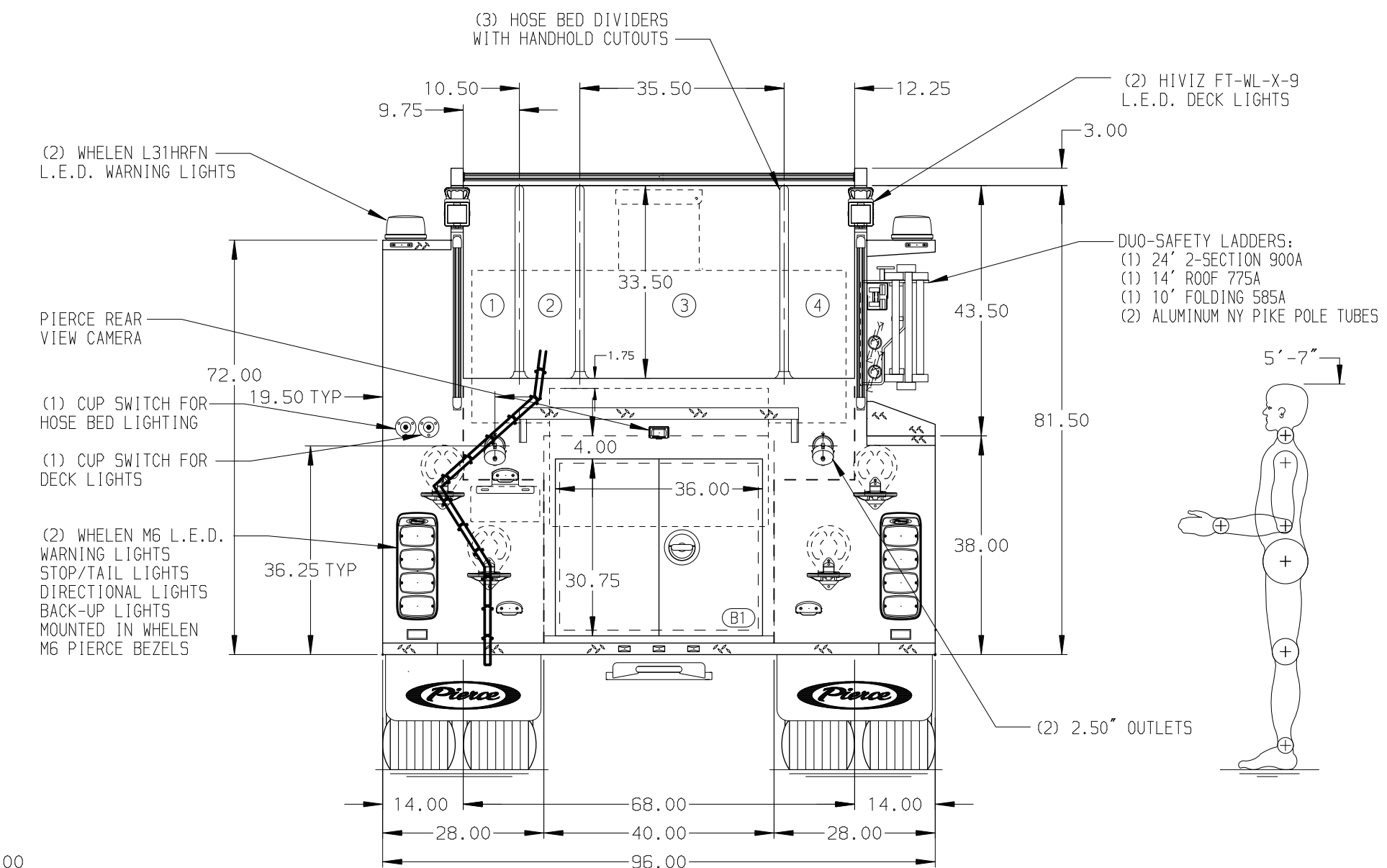
Foam Cell

Foam Cell Not Required

118.00
(9'-10")
APPROX
O.A.H.



HOSEBED CAPACITY	
BED 1	600' OF 2.50" KEY COMBAT HOSE
BED 2	600' OF 2.50" KEY COMBAT HOSE
BED 3	800' OF 5.00" D.J. POLY HOSE
BED 4	300' OF 3.00" D.J. POLY HOSE



NOTE
DIMENSIONS SHOWN ARE APPROXIMATE AND ARE SUBJECT TO MINOR DEVIATIONS AS MAY OCCUR OR BE NECESSARY IN CONSTRUCTION. MINOR DETAILS NOT SHOWN.

- 1. SHORELINE RECEPTACLE WITH KUSSMAUL AUTO EJECT LOCATED ON DRIVER SIDE OF THE CAB
- 2. BATTERY CHARGER LOCATED BEHIND DRIVER'S SEAT
- 3. BATTERY CHARGE INDICATOR DISPLAYED THROUGH DRIVER SIDE WINDOW
- 4. AUTOMATIC TIRE CHAINS

REV	DATE	BY	CH	ENFORCER
05DEC23	MMF	KBO	MAKE	CHASSIS DATA
12OCT23	MMF	KBO	PIERCE	FOR
25JUL23	MMF	KBO	MODEL	DWG NO.

		JOB NO.	39146 01-05
		SCALE	1:24 DATE
TITLE	Pierce Pumper Approval Drawing	DRAWN BY	MMF 04APR23
FOR	Omaha Fire Department	CHECKED BY	COL 04ARP23
DWG NO.	39146AD-SH1	SHEET SIZE	D SHEET NO. 1 OF 2