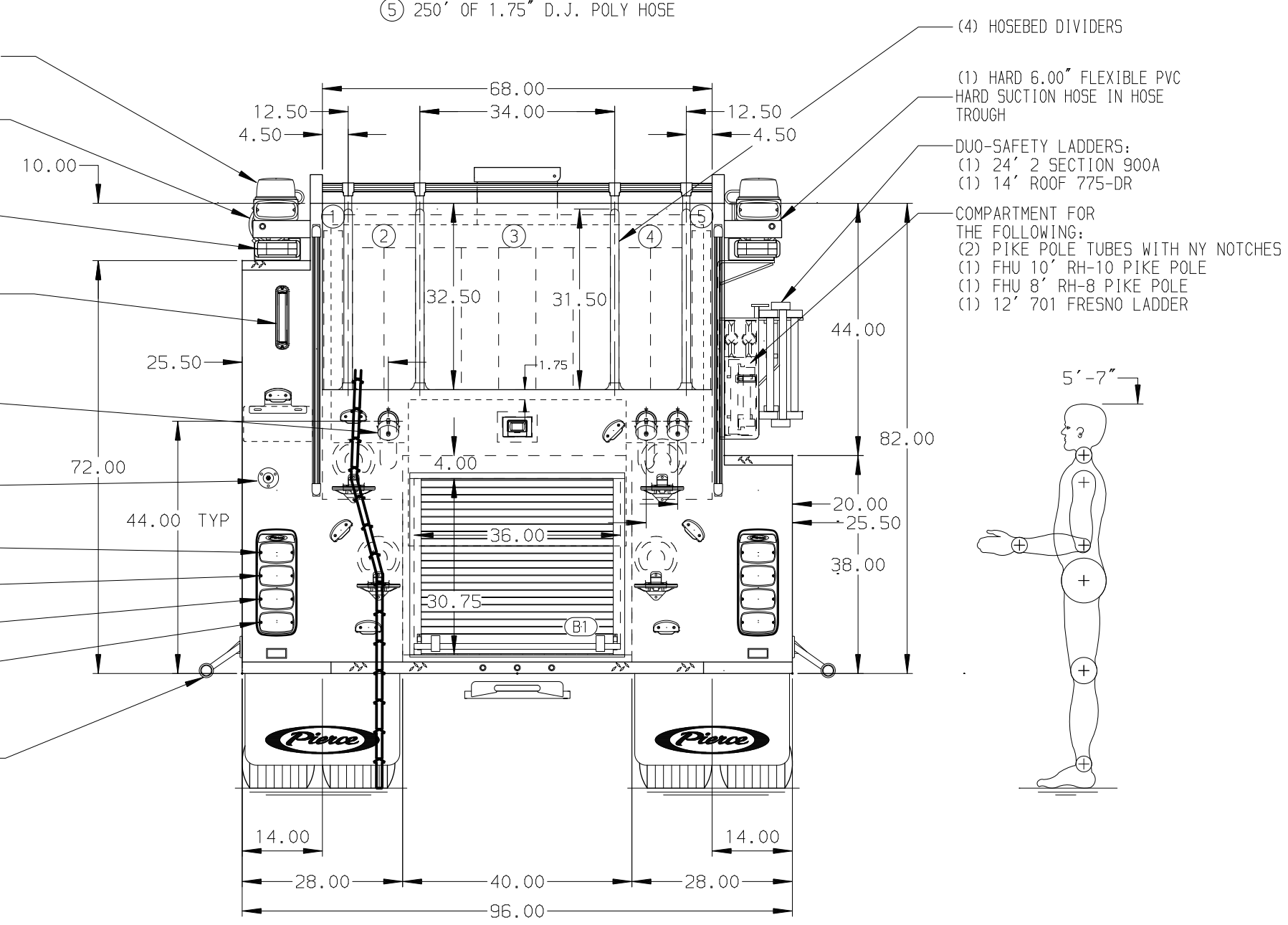


- HOSEBED CAPACITIES
- ① 250' OF 1.75\"/>



ALUMINUM BODY SIDE ROLL AND FRONTAL IMPACT PROTECTION

NOTE
DIMENSIONS SHOWN ARE APPROXIMATE AND ARE SUBJECT TO MINOR DEVIATIONS AS MAY OCCUR OR BE NECESSARY IN CONSTRUCTION. MINOR DETAILS NOT SHOWN.

- 1. (2) PIKE POLE TUBES LOCATED IN TRANSVERSE COMPARTMENT
- 2. L.E.D. LIGHT STRIP LOCATED ON THE FRONT OF THE HOSEBED

REV	DATE	BY	CH	ENFORCER
27NOV24	BTH	COS		CHASSIS DATA
06SEP24	BTH	COS		MAKE
20JUN24	BTH	COS		PIERCE
09MAY24	AMI	JJR		MODEL
29MAR24	BTH	PHA		

		JOB NO.	39187
		SCALE	1:24
TITLE 2000GPM, 1000G WATER TANK 152\"/>		DRAWN BY	BTH
		CHECKED BY	PHA
FOR FRANKLIN TOWNSHIP FIRE DISTRICT #5 FRANKLINVILLE, NEW JERSEY		SHEET SIZE	D
		SHEET NO.	1 OF 1

DWG NO. 39187AD