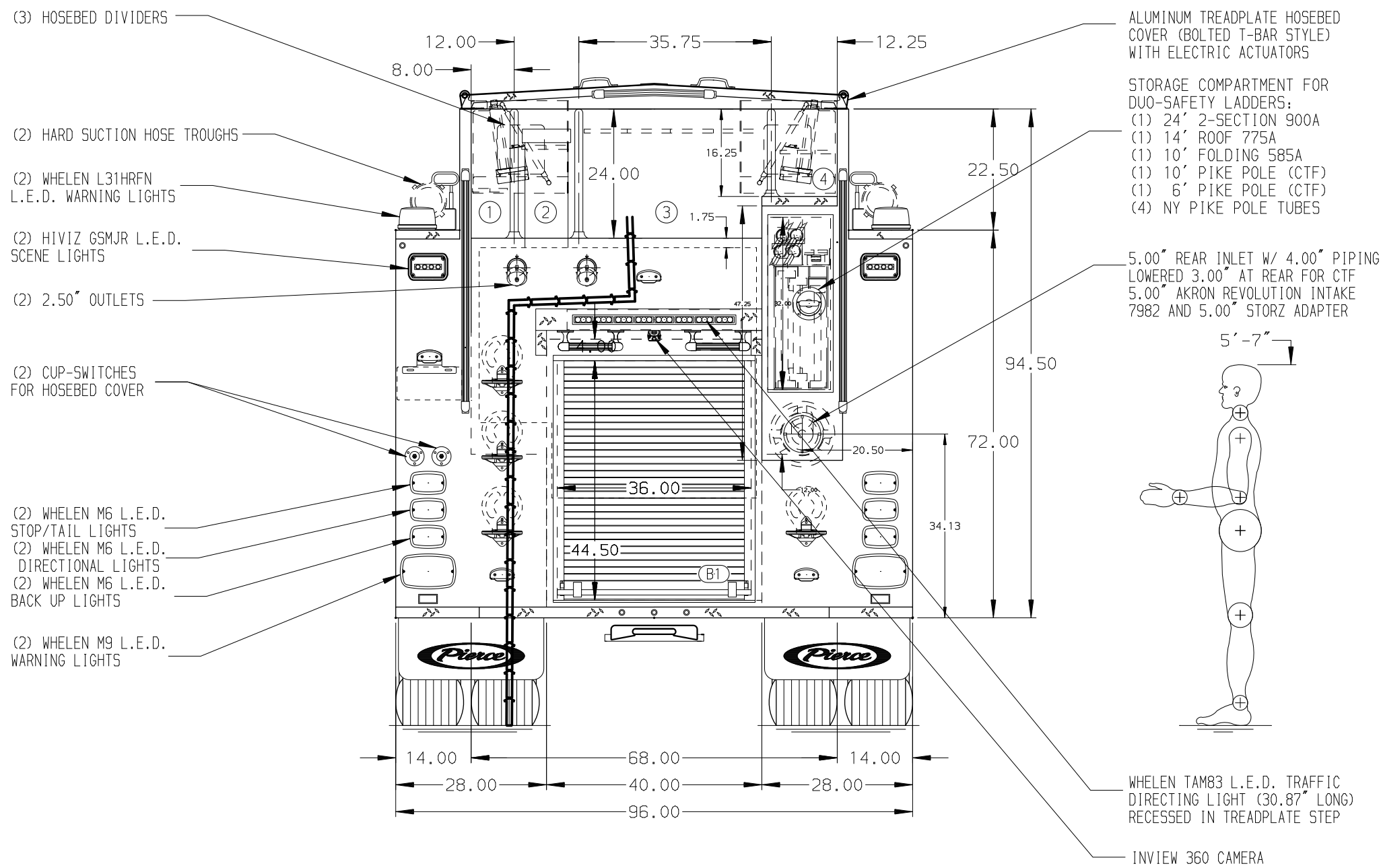


- HOSEBED CAPACITIES
- ① - 300' OF 1.75" D.J. POLY HOSE
  - ② - 400' OF 2.50" D.J. POLY HOSE
  - ③ - 1200' OF 5.00" D.J. POLY HOSE
  - ④ - (2) 200' OF 1.75" D.J. POLY HOSE BUNDLES



ALUMINUM BODY

SIDE ROLL AND FRONTAL IMPACT PROTECTION

NOTE

DIMENSIONS SHOWN ARE APPROXIMATE AND ARE SUBJECT TO MINOR DEVIATIONS AS MAY OCCUR OR BE NECESSARY IN CONSTRUCTION. MINOR DETAILS NOT SHOWN.

- 1. BATTERY CHARGER LOCATED BEHIND DRIVER'S SEAT
- 2. BATTERY CHARGE INDICATOR LOCATED NEAR DRIVER'S SEAT RISER WITH BRACKET
- 3. DUAL L.E.D. LIGHT STRIPS LOCATED IN HOSE BED
- 4. TOOL DRAWER CABINET LOCATED PER ORDER
- 5. AIR INLET WITH DISCONNECT COUPLING LOCATED ON DS PUMP PANEL

REV	DATE	BY	CH	VELOCITY FR
20NOV24	JJB	CHR	MAKE	
18OCT24	JJB	CHR	PIERCE	
19SEP24	JJB	WKL	MODEL	

Pierce MANUFACTURING INC.		JOB NO.	39485
		SCALE	1:24
		DATE	
		DRAWN BY	JJB
		CHECKED BY	WKL
		SHEET NO.	1 OF 1
		SHEET SIZE	D
		TITLE	1500 GPM, 1000G WATER TANK 152" 2G PUMPER, VELOCITY ESP
		FOR	NORTHEAST FORT BEND FIRE DEPARTMENT - ESD #5 SUGARLAND, TEXAS
		DWG NO.	39485AD