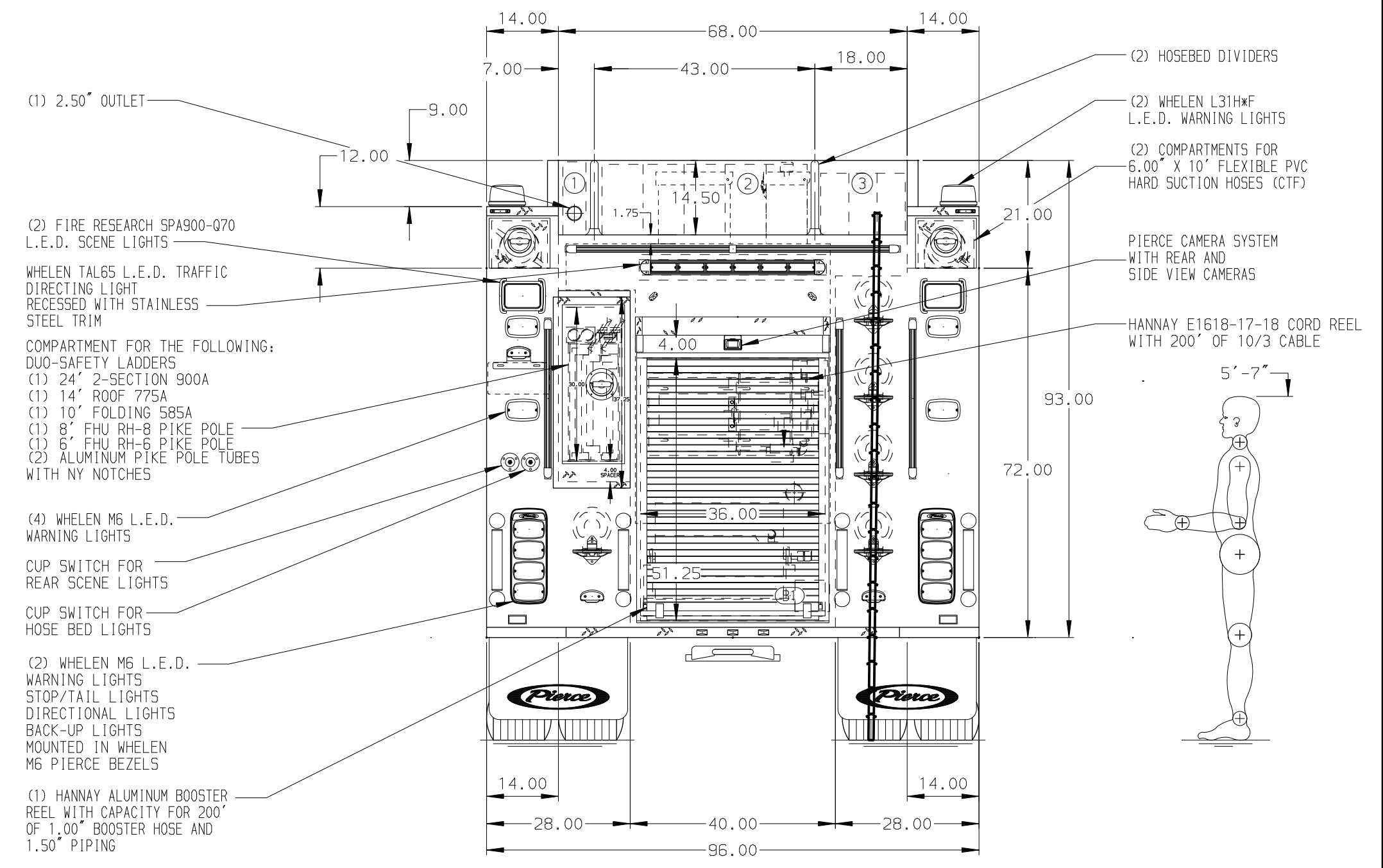
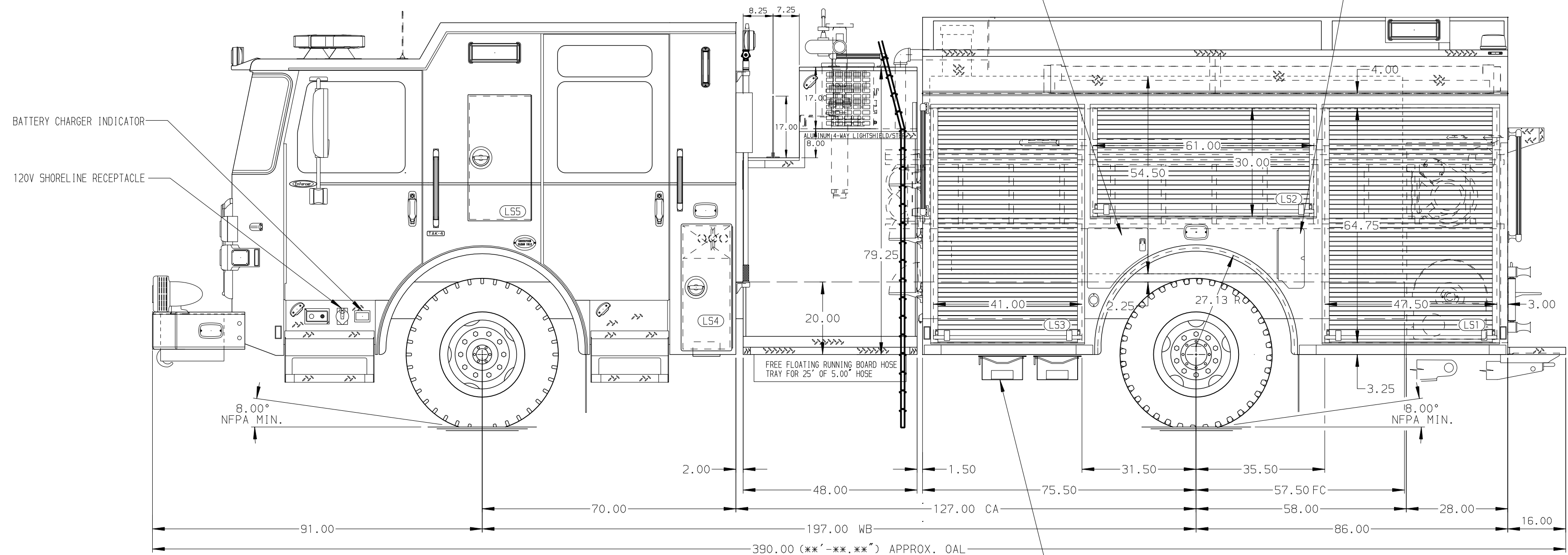


- HOSEBED CAPACITIES
- ① 200' OF 2.50" D.J. POLY HOSE (PRECONNECTED)
 - ② 1000' OF 5.00" D.J. POLY HOSE
 - ③ 500' OF 3.00" D.J. POLY HOSE



ALUMINUM BODY SIDE ROLL AND FRONTAL IMPACT PROTECTION

NOTE
DIMENSIONS SHOWN ARE APPROXIMATE AND ARE SUBJECT TO MINOR DEVIATIONS AS MAY OCCUR OR BE NECESSARY IN CONSTRUCTION. MINOR DETAILS NOT SHOWN.

- 1. AIR INLET/OUTLET WITH DISCONNECT FITTING AND 1/4 TURN VALVE LOCATED IN DRIVER'S SIDE STEP WELL
- 2. BATTERY CHARGER/AIR COMPRESSOR LOCATED BEHIND DRIVER'S SEAT
- 3. AKRON EDUCATOR SINGLE AGENT FOAM SYSTEM
- 4. NORCOLD 1.7 CU. FT. REFRIGERATOR LOCATED IN RS EMS COMPARTMENT
- 5. CIRCUIT BREAKER PANEL IN COMPARTMENT PER ORDER
- 6. SUB FEED CIRCUIT BREAKER PANEL IN COMPARTMENT PER ORDER

		JOB NO.	39835
		SCALE	DATE
Pierce MANUFACTURING INC.		TITLE	2000GPM, 1030G TANK, 1000G WATER, 30G FOAM 161" 2G PUMPER, MUX
CHASSIS DATA MAKE MODEL ENFORCER		FOR	TOWNSHIP OF SHAMONG FD SHAMONG, NEW JERSEY
DWG NO.		39835AD	
SHEET NO.		1 OF 1	