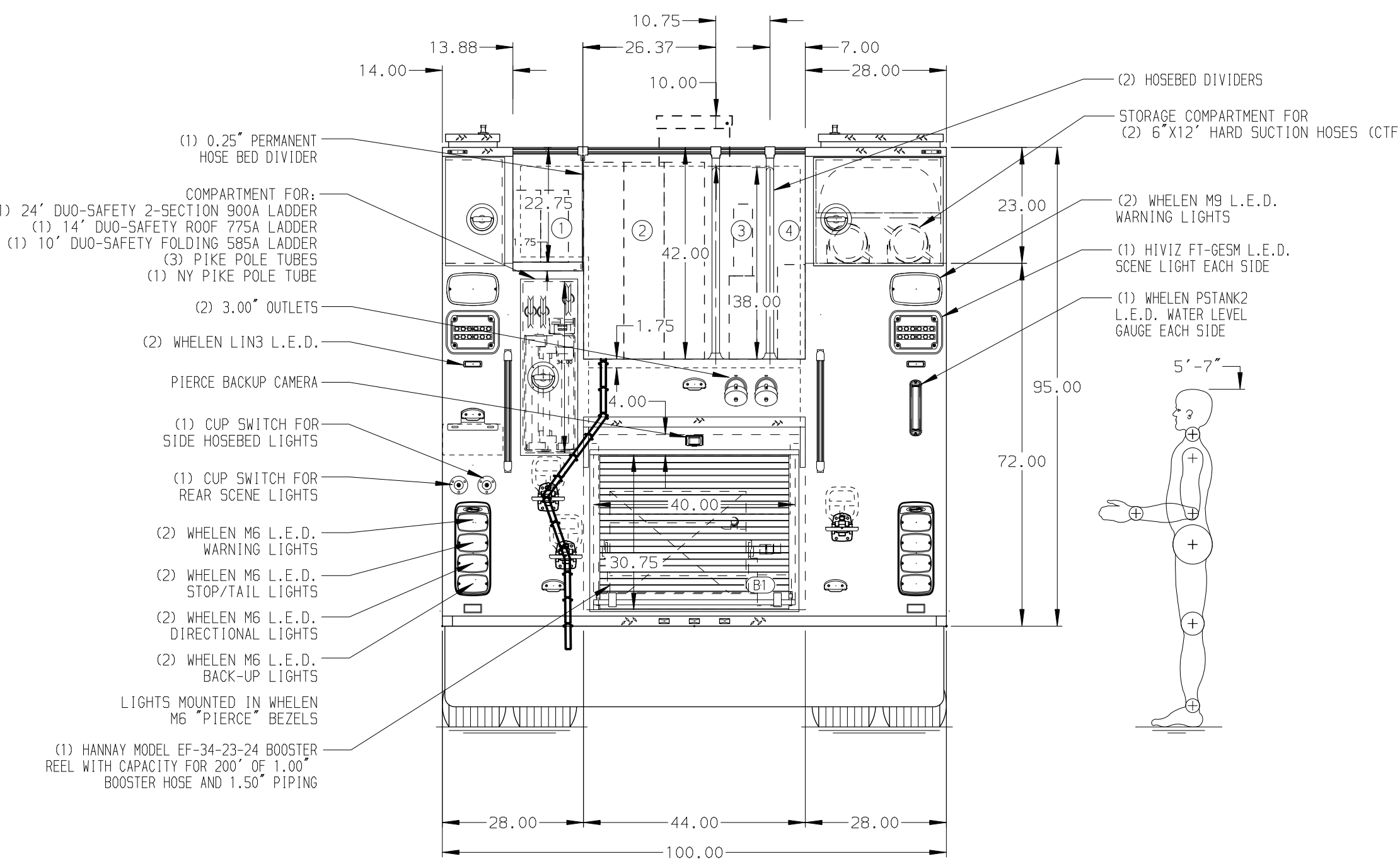
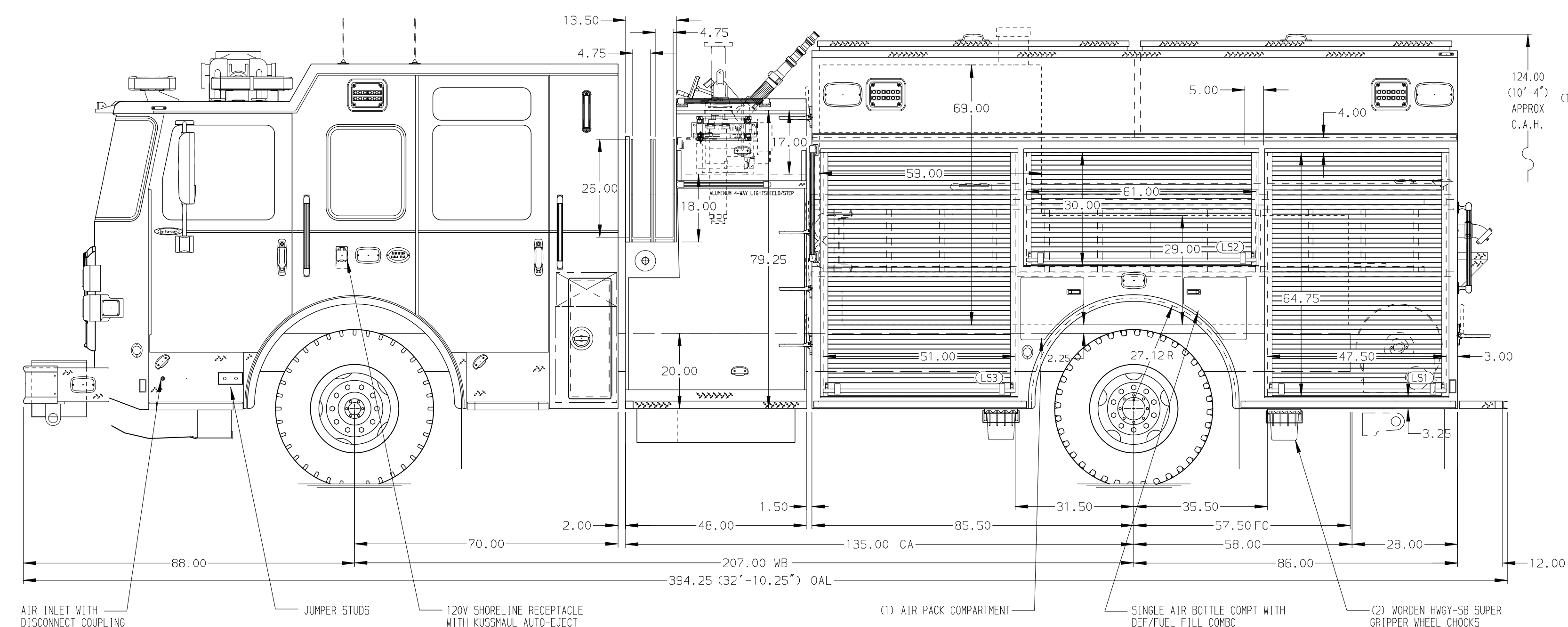


- HOSEBED CAPACITIES**
- ① 500' OF 3.00" D.J. POLY HOSE
 - ② 1300' OF 5.00" D.J. POLY HOSE
 - ③ 150' OF 3.00" D.J. POLY HOSE WITH 150' OF 2.00" D.J. POLY HOSE
 - ④ 200' OF 3.00" D.J. POLY HOSE
- *** CAUTION *****
 IF THE DIVIDER MEASURED FROM TOP OF FRAME IS 36.00" OR GREATER THE DIVIDER MUST BE TIED INTO THE HANDRAIL OR CROSS TIE SEE 802-23 FOR TEE SYMBOL



ALUMINUM BODY

SIDE ROLL AND FRONTAL IMPACT PROTECTION

NOTE
 DIMENSIONS SHOWN ARE APPROXIMATE AND ARE SUBJECT TO MINOR DEVIATIONS AS MAY OCCUR OR BE NECESSARY IN CONSTRUCTION. MINOR DETAILS NOT SHOWN.

- 1. BATTERY CHARGER LOCATED BEHIND DRIVER'S SEAT
- 2. CIRCUIT BREAKER PANEL LOCATED PER ORDER
- 3. ONE HANNAY ELECTRIC REWIND CORD REEL MODEL 1618-17-18 LOCATED PER ORDER WITH AN ALUMINUM 4-WAY ENCLOSURE AND CAPTIVE ROLLER THRU SIDE SHEET WITH 200' OF 12/3 CABLE
- 4. AIR OUTLET WITH SHUT OFF VALVE IN DS PUMP PANEL
- 5. ROLLER GUIDE FOR REEL THROUGH FLOOR OF OFFICER SIDE HATCH

REV	DATE	BY	CH	ENFORCER
240CT25	JER	TOC		
08SEP25	JER	COS		
06JUN25	CDU	CDU		

		JOB NO.	39843
		SCALE	DATE
TITLE	1500 GPM, 1000G WATER 171" PUMPER, MUX	DRAWN BY	JER
FOR	PERKIOMEN TOWNSHIP FIRE DEPARTMENT NO 1 COLLEGEVILLE, PENNSYLVANIA	CHECKED BY	CDU
DWG NO.	39843AD	SHEET SIZE	SHEET NO.
		D	1 OF 1