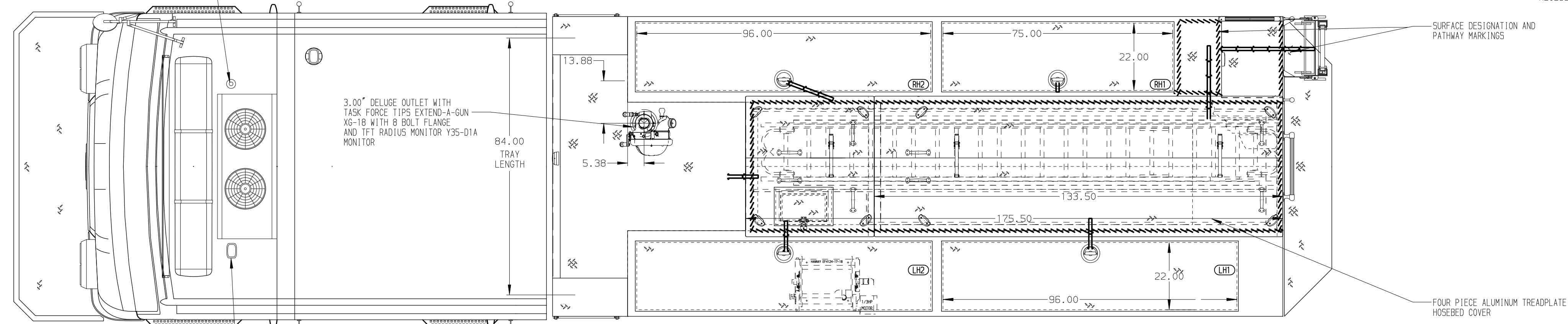
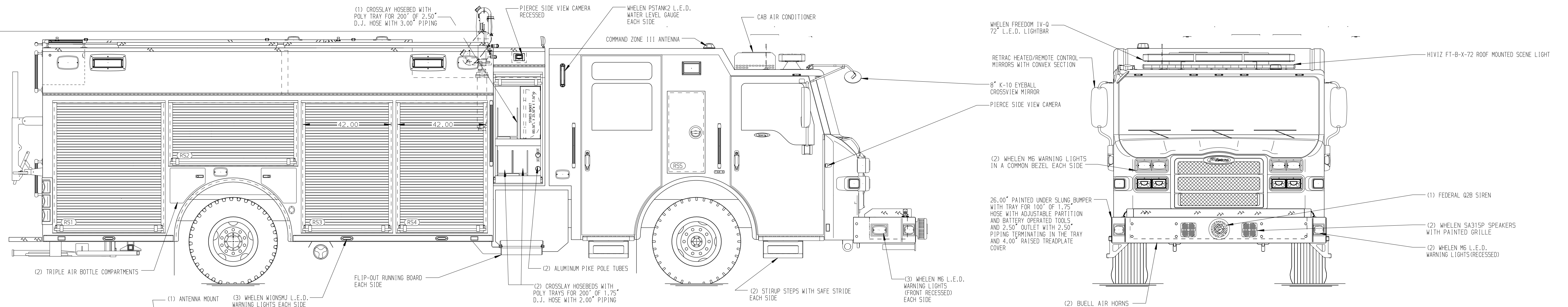
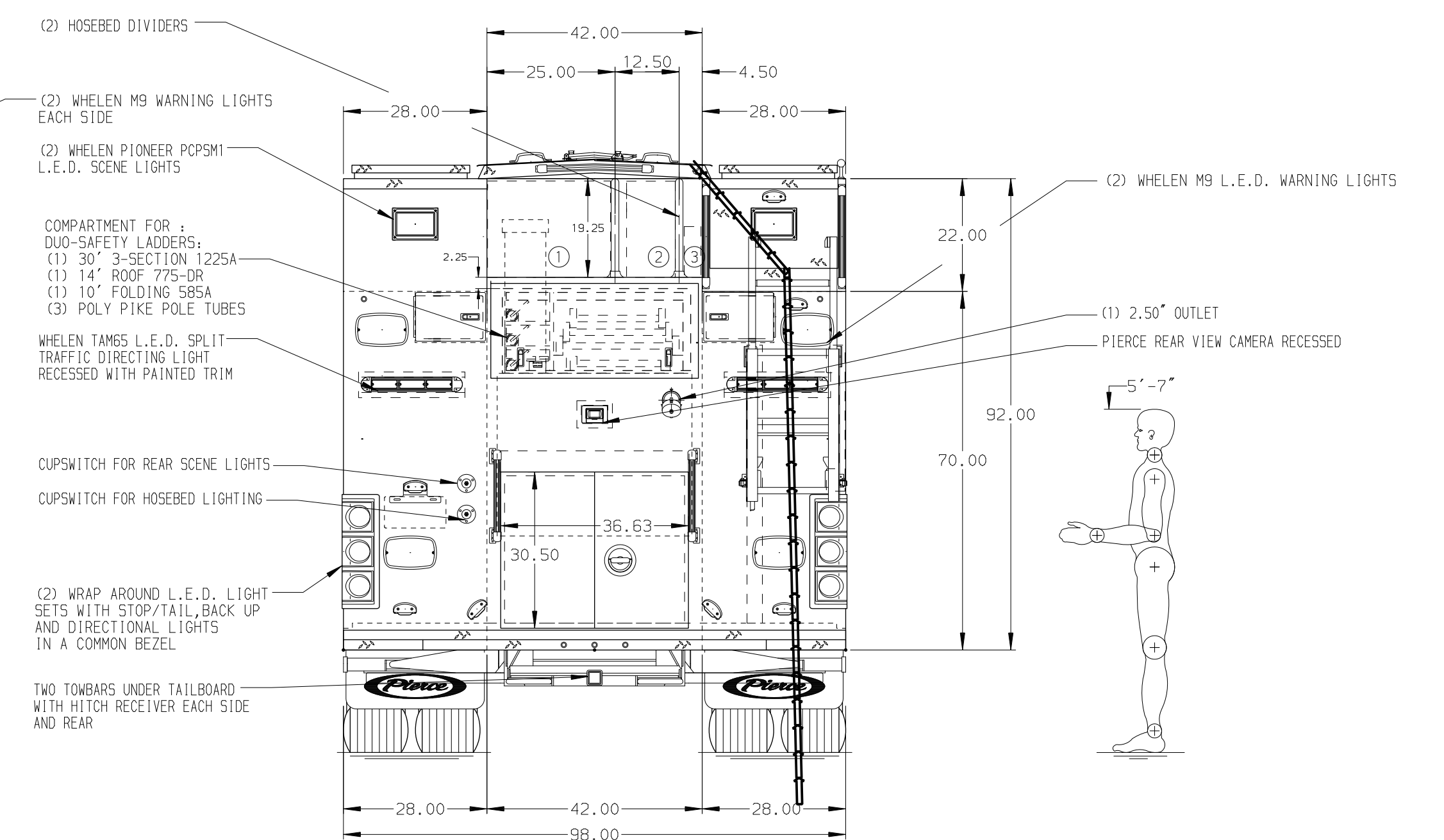
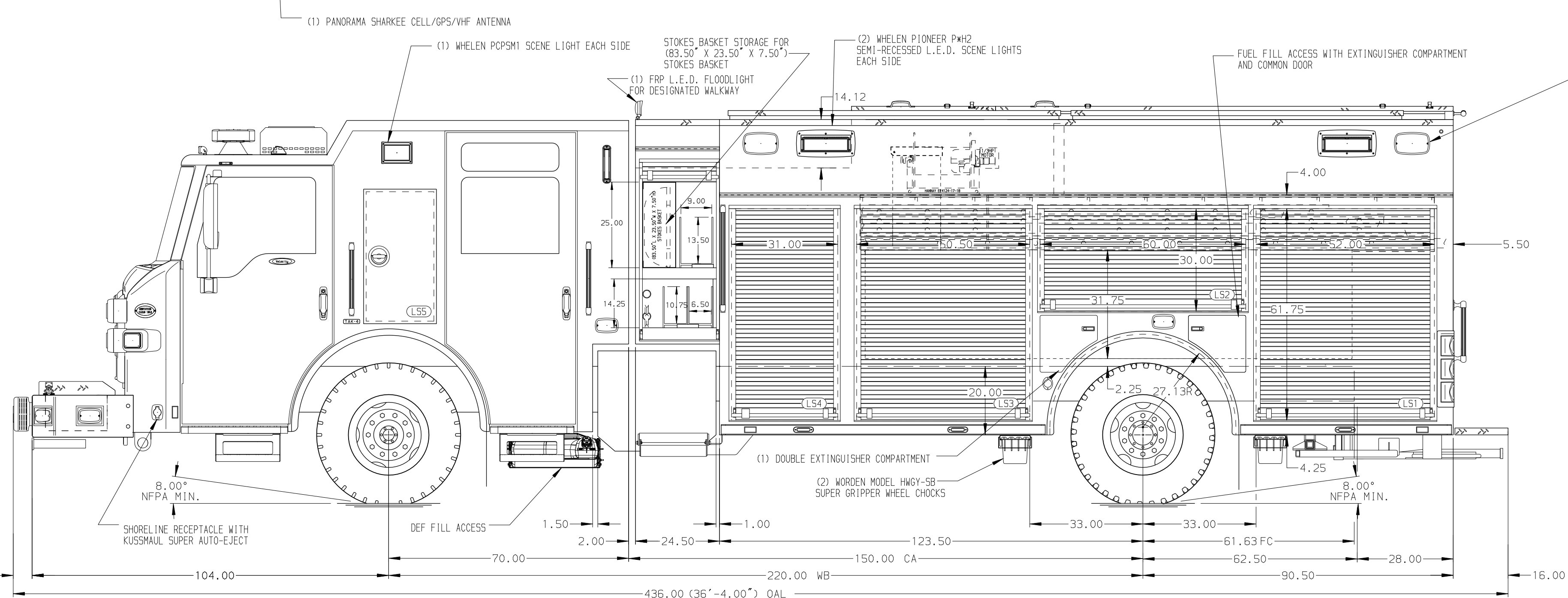


121.00
(10'-1")
APPROX
O.A.H.



- HOSEBED CAPACITIES
- ① - 750' OF 5.00" RUBBER HOSE
 - ② - 500' OF 3.00" HOSE
 - ③ - 150' OF 1.75" HOSE



ALUMINUM BODY

SIDE ROLL AND FRONTAL IMPACT PROTECTION

NOTE
DIMENSIONS SHOWN ARE APPROXIMATE AND ARE SUBJECT TO MINOR DEVIATIONS AS MAY OCCUR OR BE NECESSARY IN CONSTRUCTION. MINOR DETAILS NOT SHOWN.

1. AIR INLET WITH DISCONNECT COUPLING ON DRIVER'S SIDE STEPPWELL
2. BATTERY CHARGER/COMPRESSOR BEHIND THE DRIVER'S SEAT
3. BATTERY CHARGER INDICATOR LOCATED NEAR DRIVER'S SEAT RISER WITH BRACKET
4. HANNAY MODEL SBEP4124-17-18 BOOSTER REEL FOR 100' OF .75" HOSE IN LH2

REV	DATE	BY	CH	VELOCITY FR
17SEP25	LST	JKR		
03SEP25	LST	JKR		
10JUL25	LST	JKR		

		JOB NO.	39867
		SCALE	DATE
TITLE 1500 GPM, 600 GAL WATERTANK 214" PUC BODY, VELOCITY ESP ELECTRICAL SYSTEM	FOR CITY OF BRENTWOOD BRENTWOOD, MISSOURI	DRAWN BY	LST
		CHECKED BY	SZE
DWG NO.	39867AD	SHEET SIZE	D
		SHEET NO.	1 OF 1