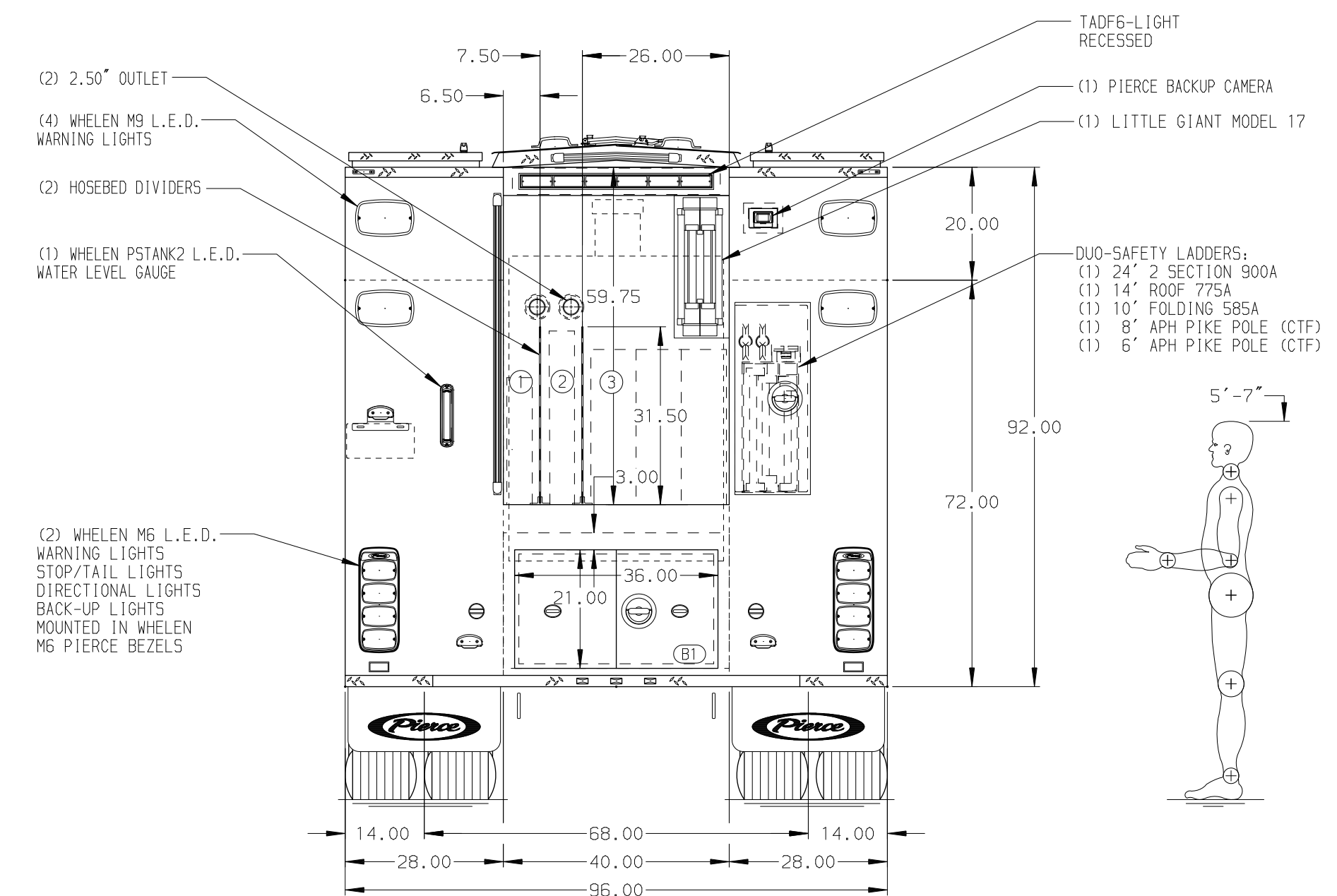


- HOSEBED CAPACITIES**
- ① 200' OF 2.50" DJP HOSE
  - ② 275' OF 2.50" DJP HOSE
  - ③ 750' OF 5.00" DJP HOSE



**ALUMINUM BODY**

**SIDE ROLL AND FRONTAL IMPACT PROTECTION**

**NOTE**  
 DIMENSIONS SHOWN ARE APPROXIMATE AND ARE SUBJECT TO MINOR DEVIATIONS AS MAY OCCUR OR BE NECESSARY IN CONSTRUCTION. MINOR DETAILS NOT SHOWN.

- 1. DEF TANK MOUNTED UNDER CAB ON THE DRIVER'S SIDE
- 2. BATTERY CHARGER LOCATED BEHIND DRIVER'S SEAT
- 3. DUAL L.E.D. LIGHT STRIPS LOCATED IN HOSE BED
- 4. AIR INLET LOCATED ON US SEAT RISER

REV	DATE	BY	CH	VELOCITY
070C125	JWR	DTJ		CHASSIS DATA
15SEP25	JWR	DTJ		PIERCE
03SEP25	JWR	DTJ		MODEL
11AUG25	JWR	DTJ		
24JUN25	CDU	CDU		

		JOB NO.	39891
		SCALE	DATE
TITLE	1500 GPM, 500G TANK 161" PUMPER, MUX	DRAWN BY	JWR
FOR	ALTOONA FIRE DEPARTMENT ALTOONA, IOWA	CHECKED BY	CDU
DWG NO.	39891AD	SHEET SIZE	SHEET NO.
		D	1 OF 1