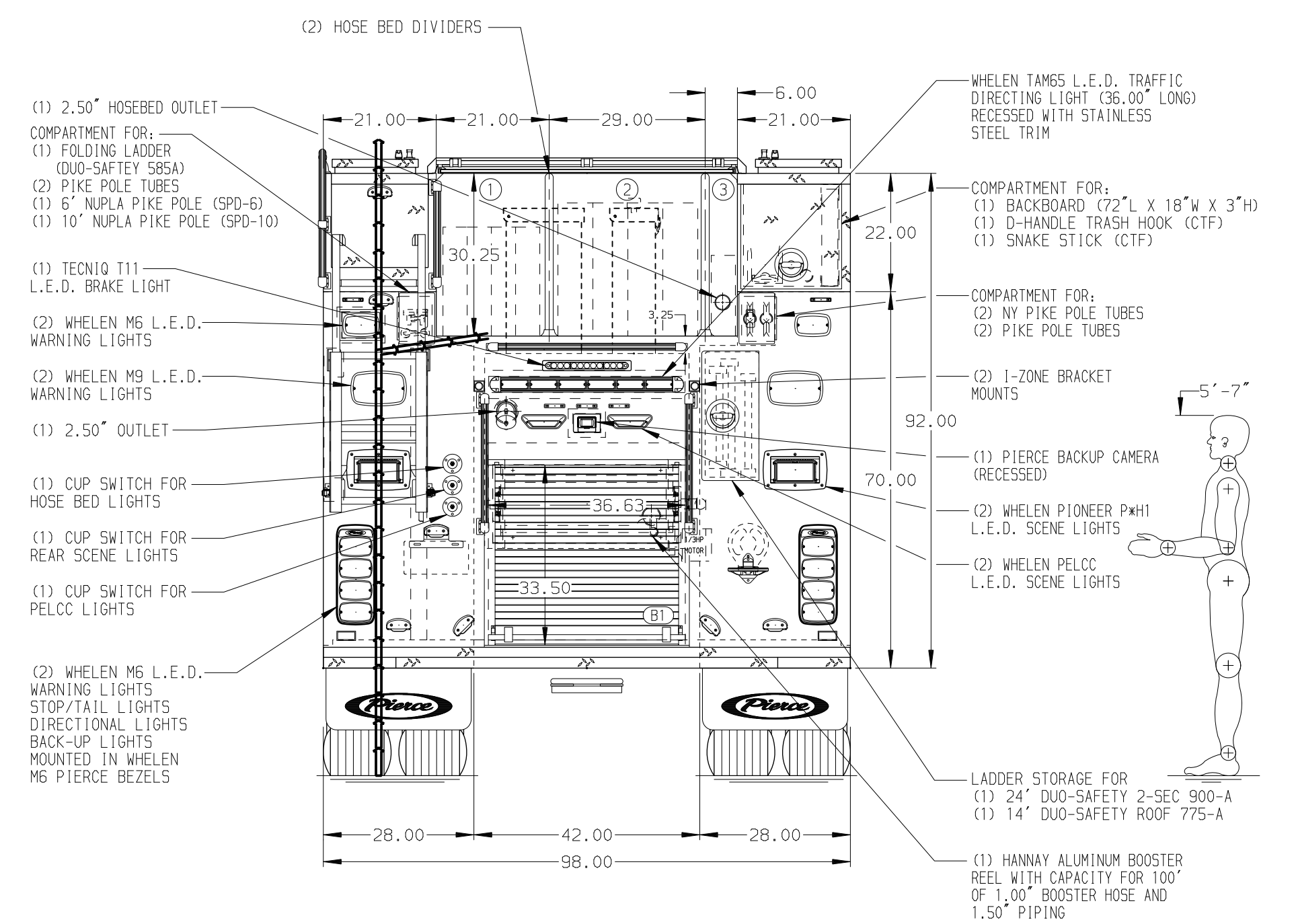
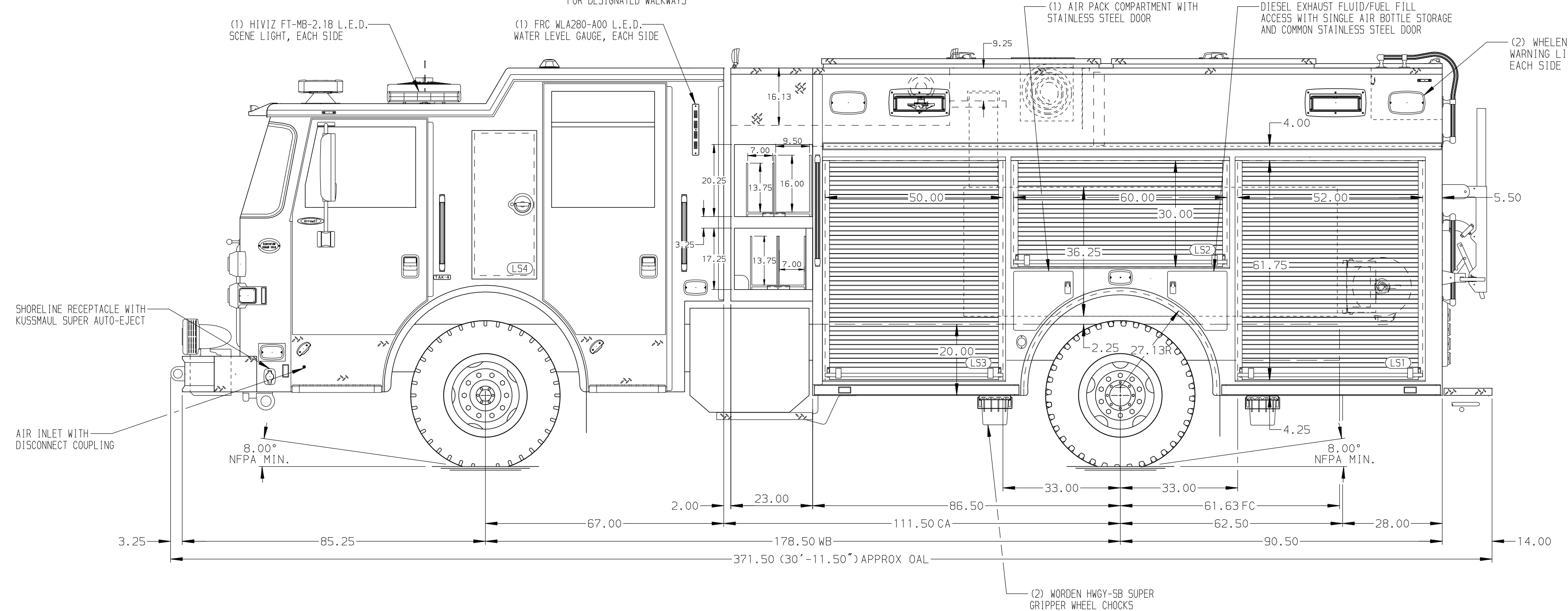
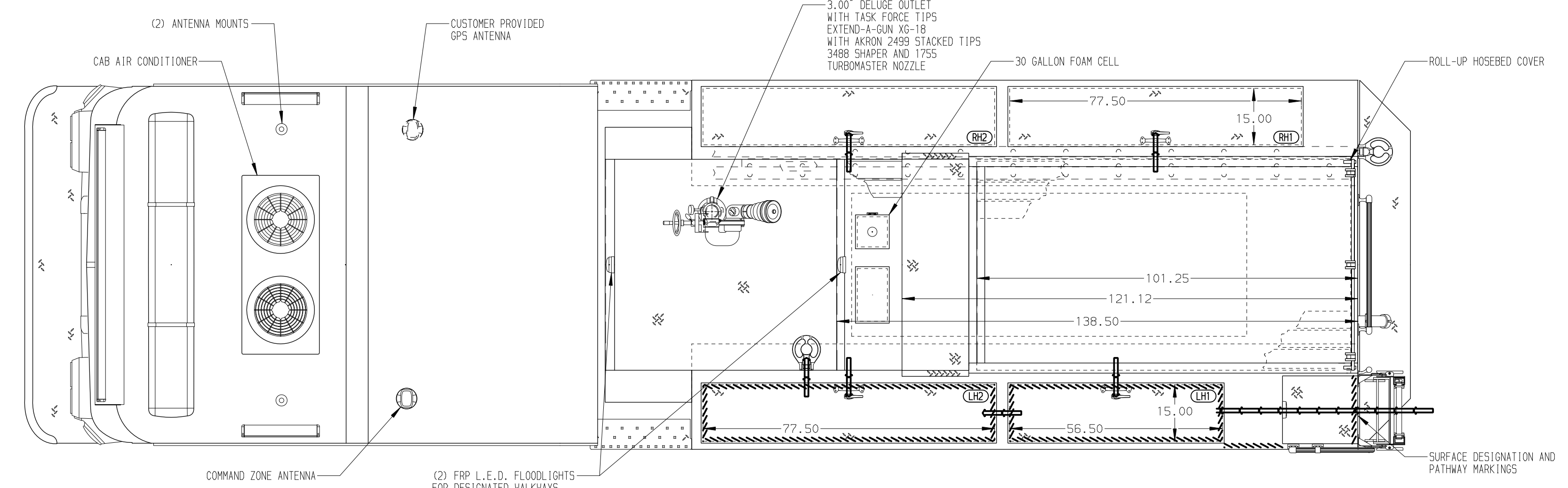


- HOSEBED CAPACITIES
- ① 800' OF 2.50" D.J. POLY HOSE
 - ② 1000' OF 4.00" D.J. POLY HOSE
 - ③ 150' OF 2.50" D.J. POLY HOSE



ALUMINUM BODY

NOTE
 DIMENSIONS SHOWN ARE APPROXIMATE AND ARE SUBJECT TO MINOR DEVIATIONS AS MAY OCCUR OR BE NECESSARY IN CONSTRUCTION. MINOR DETAILS NOT SHOWN.

- 1. AIR OUTLET WITH SHUT OFF VALVE LOCATED ON DRIVER'S SIDE PUMP PANEL
- 2. DUAL L.E.D. LIGHT STRIPS LOCATED IN HOSE BED
- 3. BATTERY CHARGER LOCATED PER ORDER
- 4. BATTERY CHARGE INDICATOR LOCATED NEAR DRIVER SEAT RISER

REV	DATE	BY	CH	ARROW XT
1	18FEB26	JDA	DTJ	CHASSIS DATA
2	24OCT25	JDA	DTJ	MAKE
3	25SEP25	JDA	DTJ	PIERCE
4	11JUL25	JDA	KLH	MODEL

		JOB NO.	39916
		SCALE	01-02
TITLE	1500 GPM, 530G TANK, 500G WATER, 30G FOAM	DRAWN BY	JDA
FOR	177" PUC, MUX	CHECKED BY	KLH
DWG NO.	39916AD	SHEET SIZE	D
		DATE	18JUN25
		DATE	19JUN25
		SHEET NO.	1 OF 1