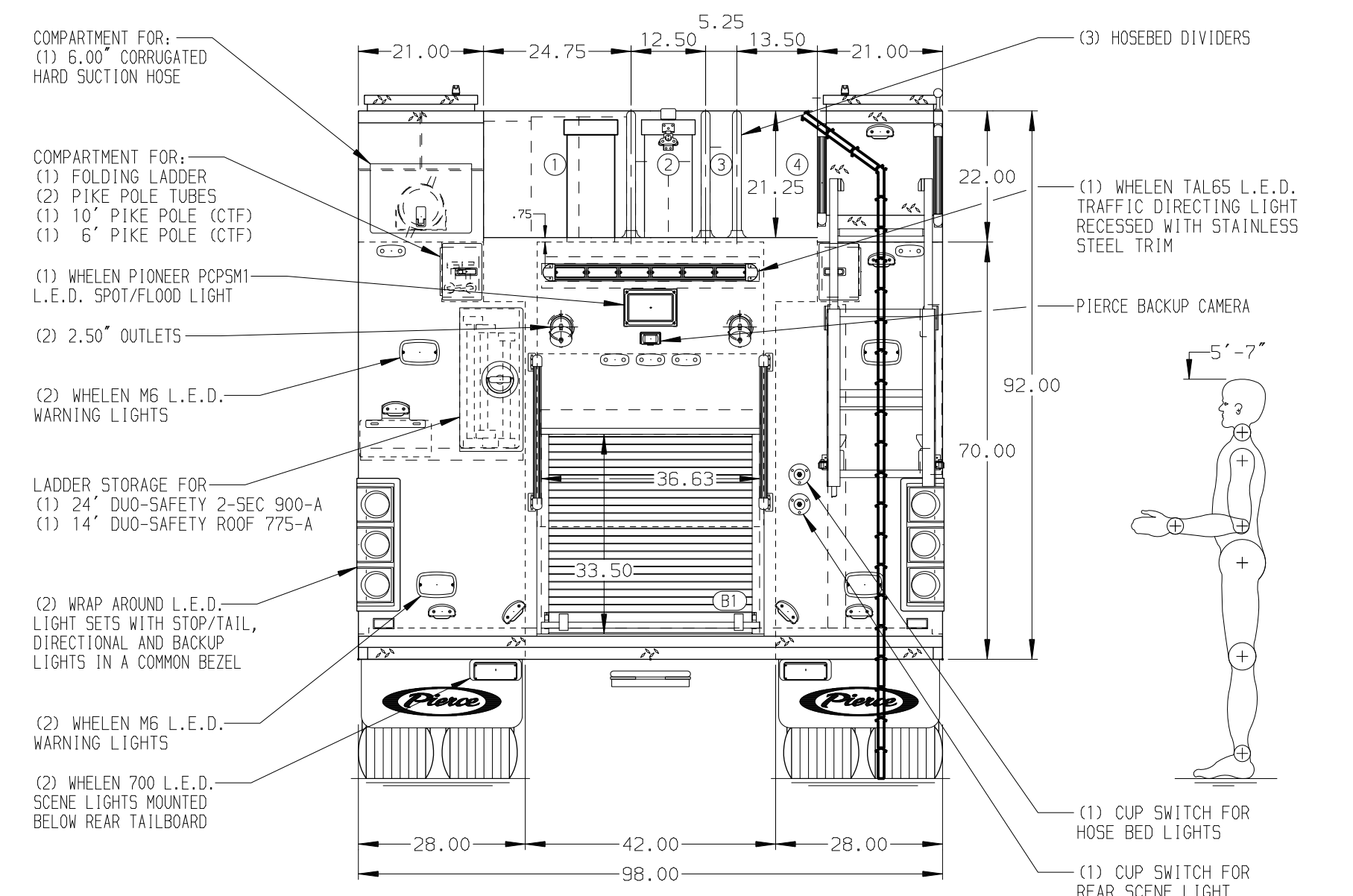
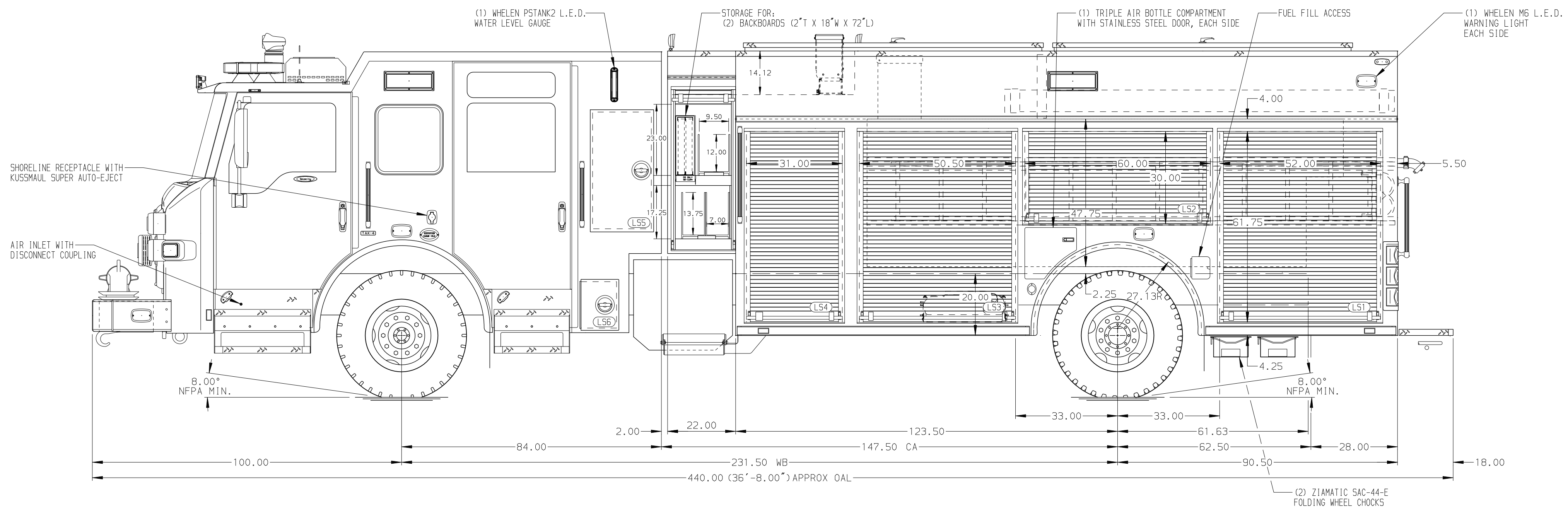


- HOSEBED CAPACITIES
- 1000' OF 5.00" D.J. POLY HOSE
 - 400' OF 3.00" D.J. POLY HOSE
 - 300' OF 2.00" D.J. POLY HOSE
 - OPEN FOR WALKWAY



ALUMINUM BODY SIDE ROLL AND FRONTAL IMPACT PROTECTION

NOTE
DIMENSIONS SHOWN ARE APPROXIMATE AND ARE SUBJECT TO MINOR DEVIATIONS AS MAY OCCUR OR BE NECESSARY IN CONSTRUCTION. MINOR DETAILS NOT SHOWN.

- DUAL L.E.D. LIGHT STRIPS LOCATED IN HOSE BED
- ONSPOT AUTOMATIC TIRE CHAINS TO BE PROVIDED AT REAR
- ONE ADDITIONAL TFT MONITOR RECEPTACLE TO BE LOCATED PER ORDER
- BATTERY CHARGER LOCATED PER ORDER
- BATTERY CHARGE INDICATOR LOCATED ON DRIVER SEAT WITH BRACKET
- DEF TANK LOCATED IN LS3 COMPARTMENT
- XANTREX INVERTER LOCATED PER ORDER
- TWO 120V RECEPTACLES LOCATED IN INTERIOR CAB PER ORDER

REV	DATE	BY	CH	VELOCITY FR
3DEC25	MPM	TDC		
08OCT25	BBA	TDC		
01AUG25	CDU	CDU		

		JOB NO.	39959
		SCALE	DATE
TITLE	1500 GPM, 1000G TANK, 980G WATER, 20G FOAM 214" PUC, MUX	DRAWN BY	JDA
FOR	RIPON FIRE DISTRICT RIPON, WISCONSIN	CHECKED BY	CDU
DWG NO.	39959AD	SHEET SIZE	SHEET NO.
		D	1 OF 1