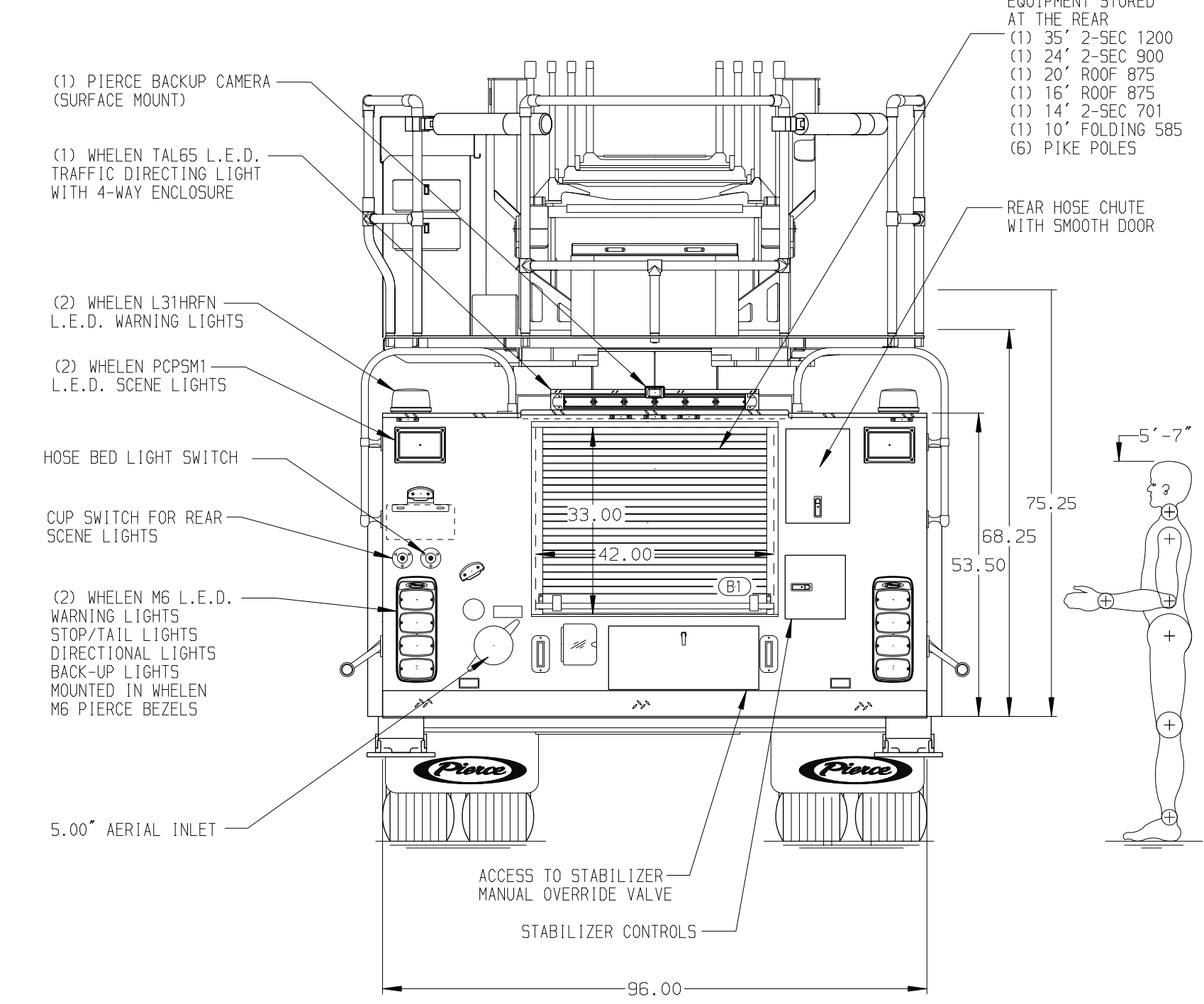
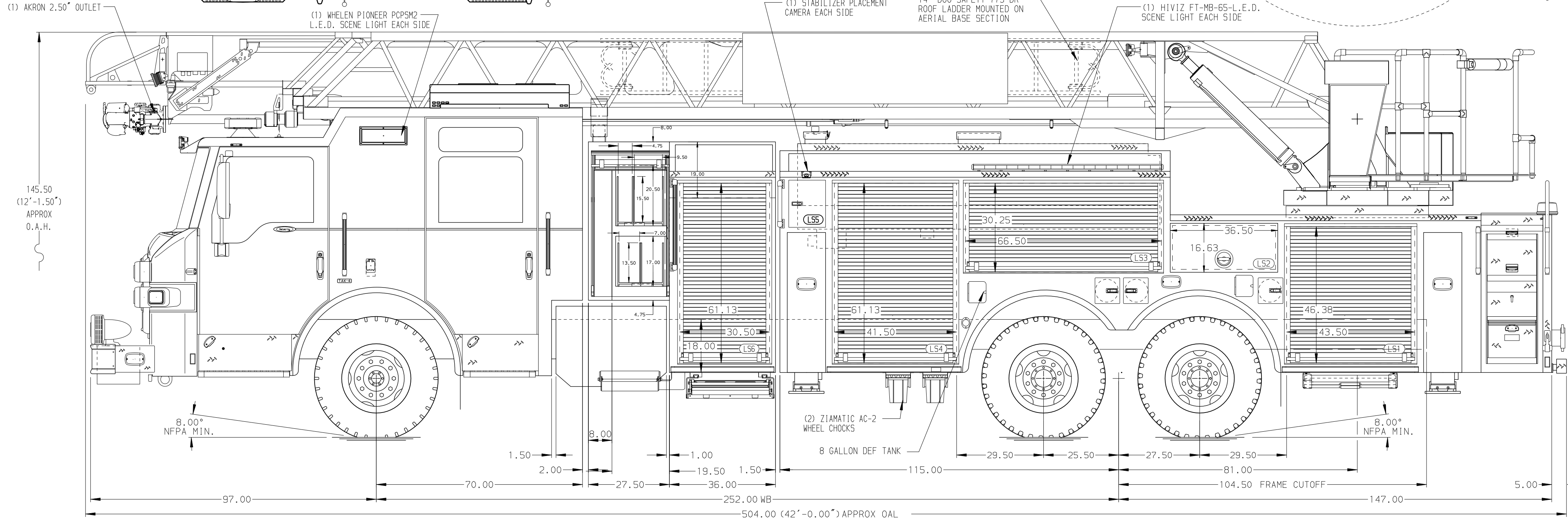


BODY 107' ASL Tandem Axle Aluminum Body PUC COMPT, LEFT SIDE FRONT FH/FD RollUp Forward w/o Chute COMPT, LEFT SIDE REAR FH/FD RollUp and Lift-up Rearward COMPT, RIGHT SIDE FRONT Full Height RollUp Forward COMPT, RIGHT SIDE REAR Full Height RollUp and Lift-up Rearward	TOTAL TANK CAPACITY 500 Gallon Poly Tank WATER CAPACITY 500 Gallons of Water FOAM CELL CAPACITY Foam Cell Not Required FOAM SYSTEM Foam System Not Required
---	--



CHASSIS Velocity Chassis (Big Block)	CAB 7010 Notched Velocity FR Cab, PUC BUMPER	ELECTRICAL SYSTEM MUX TRANSMISSION Allison 6th Gen, 4000 EV5 P	AXLE, FRONT, CUSTOM 24,000 Lb TAK-4 Axle	PUMPHOUSE Control Zone, PAL/PAP PUC	CROSSLAYS, 1.50" (2) 1.50", Poly Trays, 200'	DEADLAY (1) Poly Tray Special Size	SAFETY Side Roll and Frontal Impact Protection
ENGINE 525 HP Cummins X12 Engine	19" Extended Stainless Steel		AXLE, REAR 48,000 Lb Meritor Axle	PUMP 2000 GPM Pierce PUC	CROSSLAYS, 2.50" (1) 2.50", Poly Tray, 200'	GENERATOR Generator Not Required	

NOTE DIMENSIONS SHOWN ARE APPROXIMATE AND ARE SUBJECT TO MINOR DEVIATIONS AS MAY OCCUR OR BE NECESSARY IN CONSTRUCTION. MINOR DETAILS NOT SHOWN.	1. 28" LIMITED RETRACTION REQUIRED 2. ONE 1.50" OUTLET WITH 2.00" PIPING AND SWIVEL LOCATED IN CENTER BUMPER TRAY 3. SHORELINE STRAIT BLADE RECEPTACLE LOCATED ON DRIVER SIDE OF THE CAB 4. AIR INLET WITH DISCONNECT COUPLING IN THE DRIVER SIDE STEPMILL 5. BATTERY CHARGER LOCATED PER ORDER 6. BATTERY CHARGE INDICATOR LOCATED PER ORDER 7. EIGHT ADJUSTABLE 'SHIELDS LOCATED PER ORDER 8. FIVE FLOOR MOUNTED SLIDE-OUT TRAY LOCATED PER ORDER 9. 3.00" RAISED AERIAL PEDESTAL 10. LIFTING EYE ROPE RESCUE ATTACHMENT AT AERIAL TIP	11. 1500 GPM HIGH FLOW WATERWAY 12. ONE TILT/SLIDE-OUT TRAY PER ORDER 13. TWO PEGBOARDS MOUNTED ON SIDE WALL OF COMPARTMENT PER ORDER 14. RUNG LIGHTING ON AERIAL LADDER 15. TWO 120V RECEPTACLES PER ORDER 16. FRONT VIEW CAMERA IN CAB PER ORDER
--	---	---

		JOB NO.	40012
		SCALE	DATE
		1:24	25JUN25
		DRAWN BY	LWE
		CHECKED BY	NAK
		SHEET SIZE	SHEET NO.
		D	1 OF 1

CHASSIS DATA	TITLE	107' ASCENDANT AERIAL LADDER AND BODY ASSEMBLY
MAKE	FOR	DURANGO FPD
PIERCE		COLORADO SPRINGS, CO
MODEL	DWG NO.	40012AD
VELOCITY		