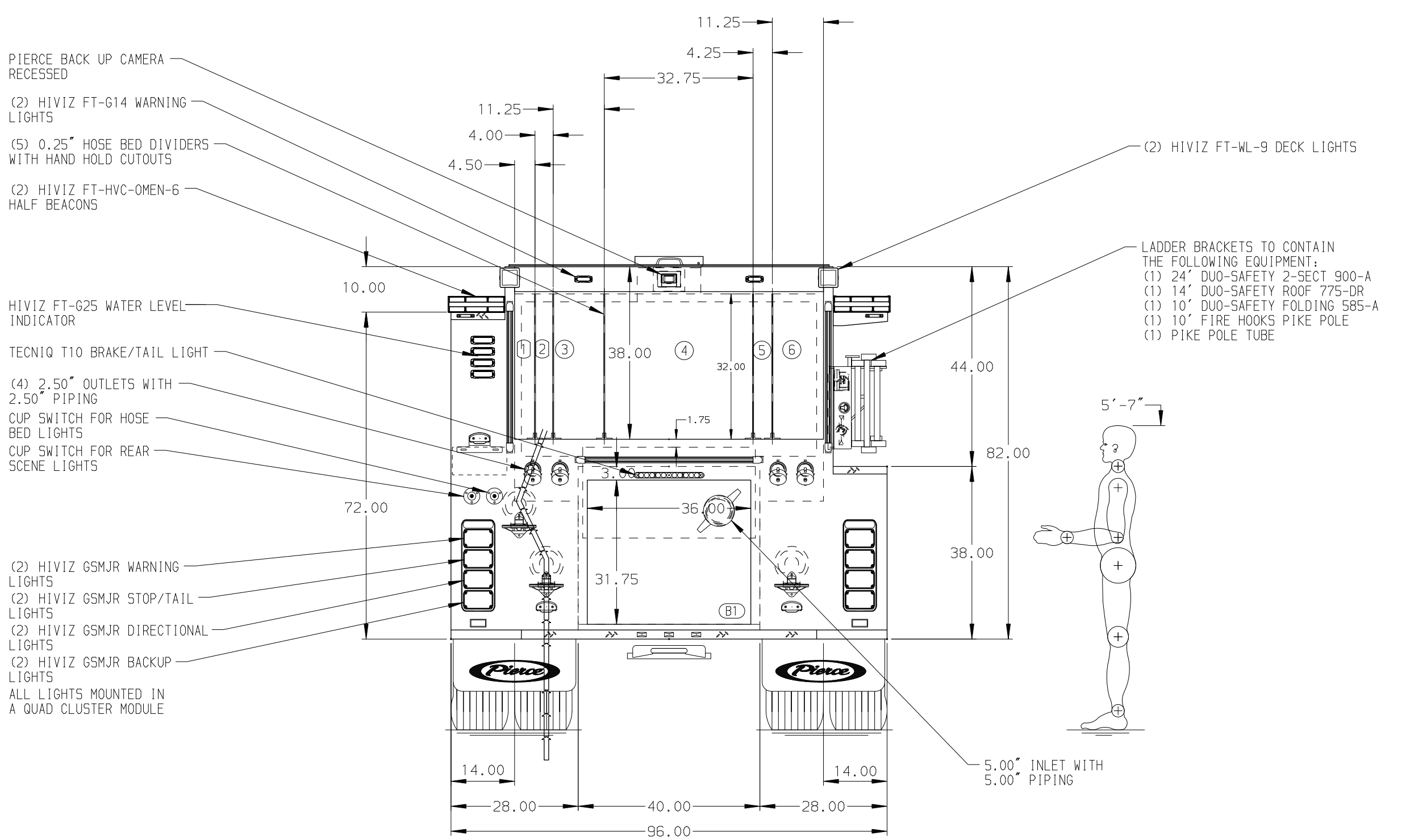
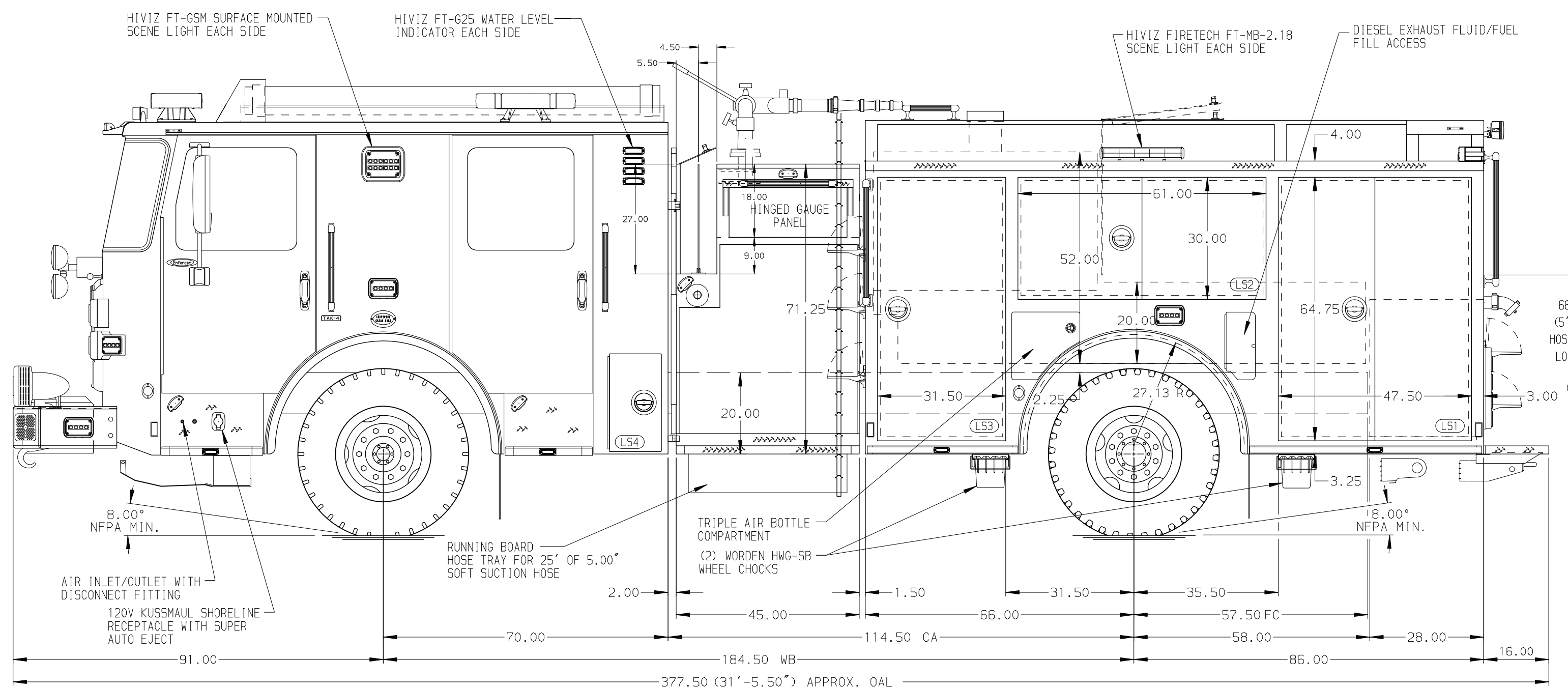


- HOSEBED CAPACITIES
- ① 250' OF 2.00" D.J. POLY HOSE
 - ② 200' OF 1.75" D.J. POLY HOSE
 - ③ 400' OF 3.00" D.J. POLY HOSE
 - ④ 1200' OF 5.00" D.J. POLY HOSE
 - ⑤ 300' OF 1.75" D.J. POLY HOSE
 - ⑥ 300' OF 3.00" D.J. POLY HOSE



ALUMINUM BODY SIDE ROLL AND FRONTAL IMPACT PROTECTION

NOTE
DIMENSIONS SHOWN ARE APPROXIMATE AND ARE SUBJECT TO MINOR DEVIATIONS AS MAY OCCUR OR BE NECESSARY IN CONSTRUCTION. MINOR DETAILS NOT SHOWN.

- 1. ONSHOT TIRE CHAINS PROVIDED AT THE REAR
- 2. BATTERY CHARGER LOCATED PER ORDER
- 3. BATTERY CHARGER INDICATOR LOCATED PER ORDER
- 4. THREE FULL WIDTH/DEPTH ADJUSTABLE SHELVES WITH SIDES LOCATED PER ORDER
- 5. ONE ADJUSTABLE SLIDE-OUT TRAY WITH SIDES LOCATED PER ORDER
- 6. ONE VERTICAL PARTITION LOCATED PER ORDER
- 7. THREE TOOLBOARDS ON REAR WALL LOCATED PER ORDER
- 8. ONE 120V DUPLEX RECEPTACLE LOCATED IN CAB PER ORDER
- 9. ONE 120V DUPLEX RECEPTACLE IN REAR BODY LOCATED PER ORDER

REV	DATE	BY	CH	ENFORCER
19FEB26	LST	SJS		CHASSIS DATA
13NOV25	BST	SJS		MAKE
12NOV25	LST	SJS		PIERCE
28OCT25	BST	SJS		MODEL
19SEP25	LST	SJS		

		JOB NO.	40096
		SCALE	1:24
TITLE 1500GPM, 750G WATER TANK 152" PUMPER BODY, MUX		DATE	01-02
		DRAWN BY	BST
FOR TOWN OF CLAYTON CLAYTON, NORTH CAROLINA		CHECKED BY	16JUN25
		CDU	9JUL25
DWG NO. 40096AD		SHEET SIZE	D
		SHEET NO.	1 OF 1