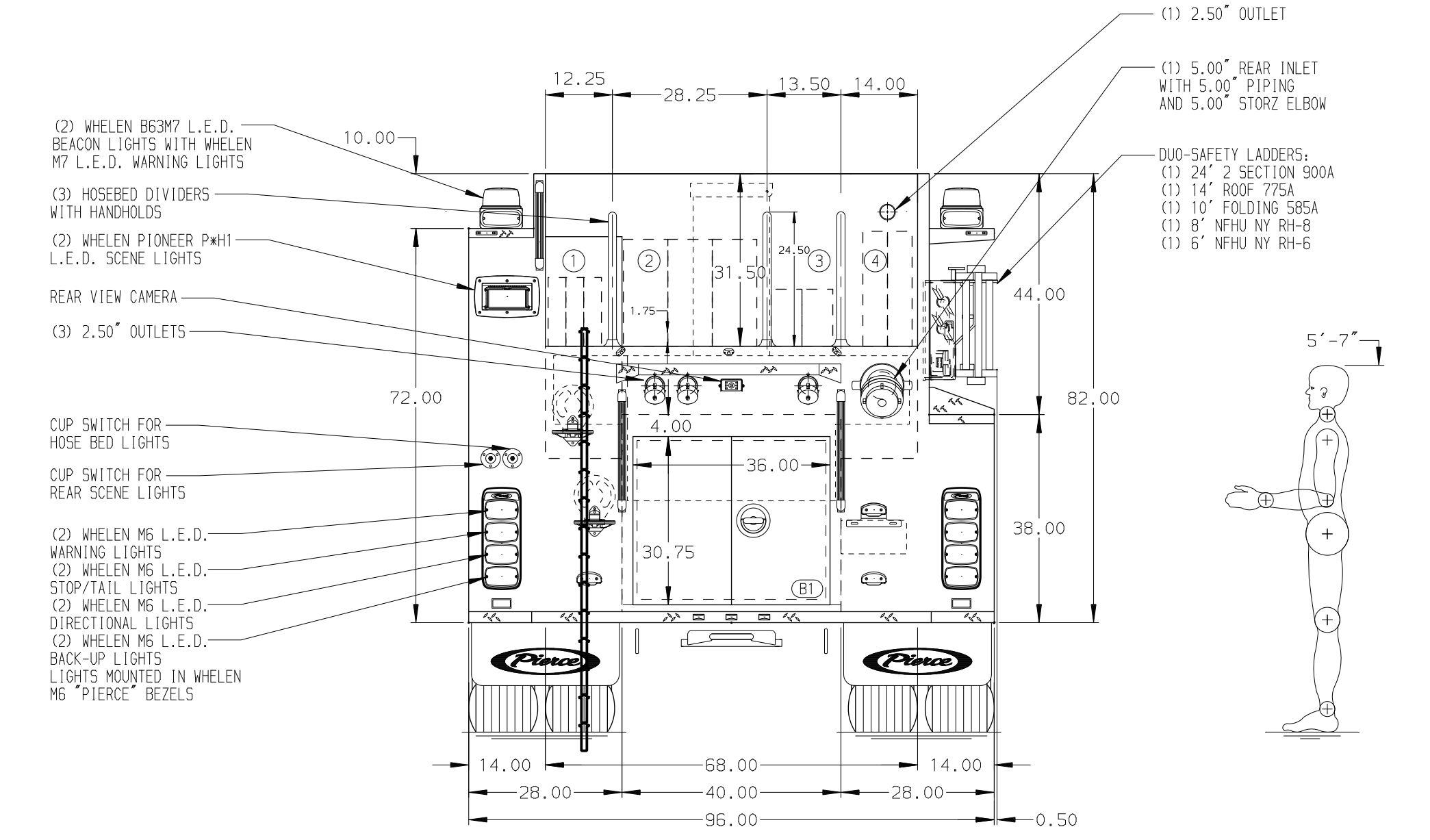
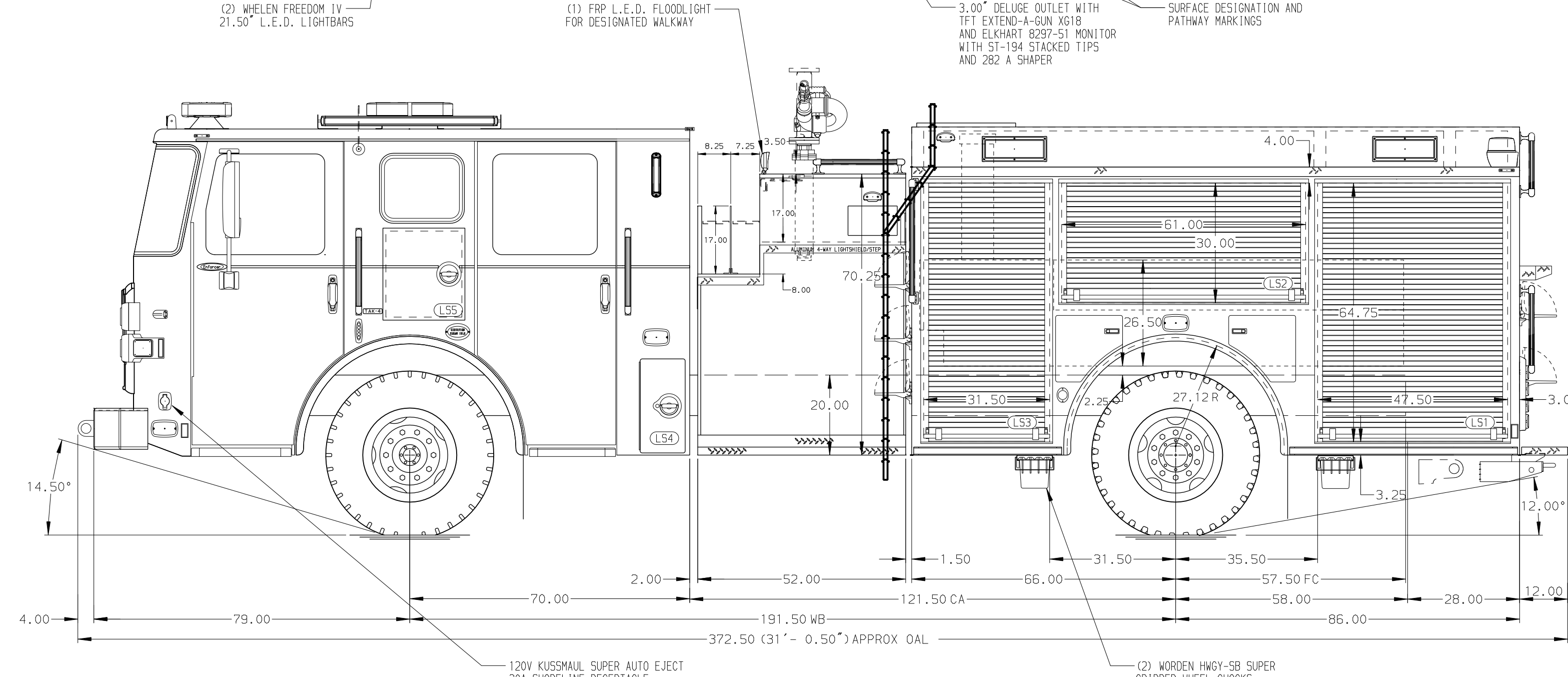


- HOSEBED CAPACITIES**
- ① - 400' OF 1.75\"/>



ALUMINUM BODY

SIDE ROLL AND FRONTAL IMPACT PROTECTION

NOTE
DIMENSIONS SHOWN ARE APPROXIMATE AND ARE SUBJECT TO MINOR DEVIATIONS AS MAY OCCUR OR BE NECESSARY IN CONSTRUCTION. MINOR DETAILS NOT SHOWN.

- 1. BATTERY CHARGER LOCATED PER SHOP ORDER
- 2. AIR INLET W/ DISCONNECT COUPLING LOCATED IN DS STEP WELL
- 3. ONSPOT AUTOMATIC TIRE CHAINS

		JOB NO.	40138
		SCALE	DATE
TITLE 500G TANK, 500G WATER, 0G FOAM ENFORCER, MUX MAKE PIERCE FOR OREM CITY FIRE DEPARTMENT OREM, UTAH DWC NO. 40138AD		DRAWN BY	JER 13AUG25
		CHECKED BY	IPR 14AUG25
REV DATE BY CH ENFORCER		SHEET SIZE	SHEET NO.
		D	1 OF 1