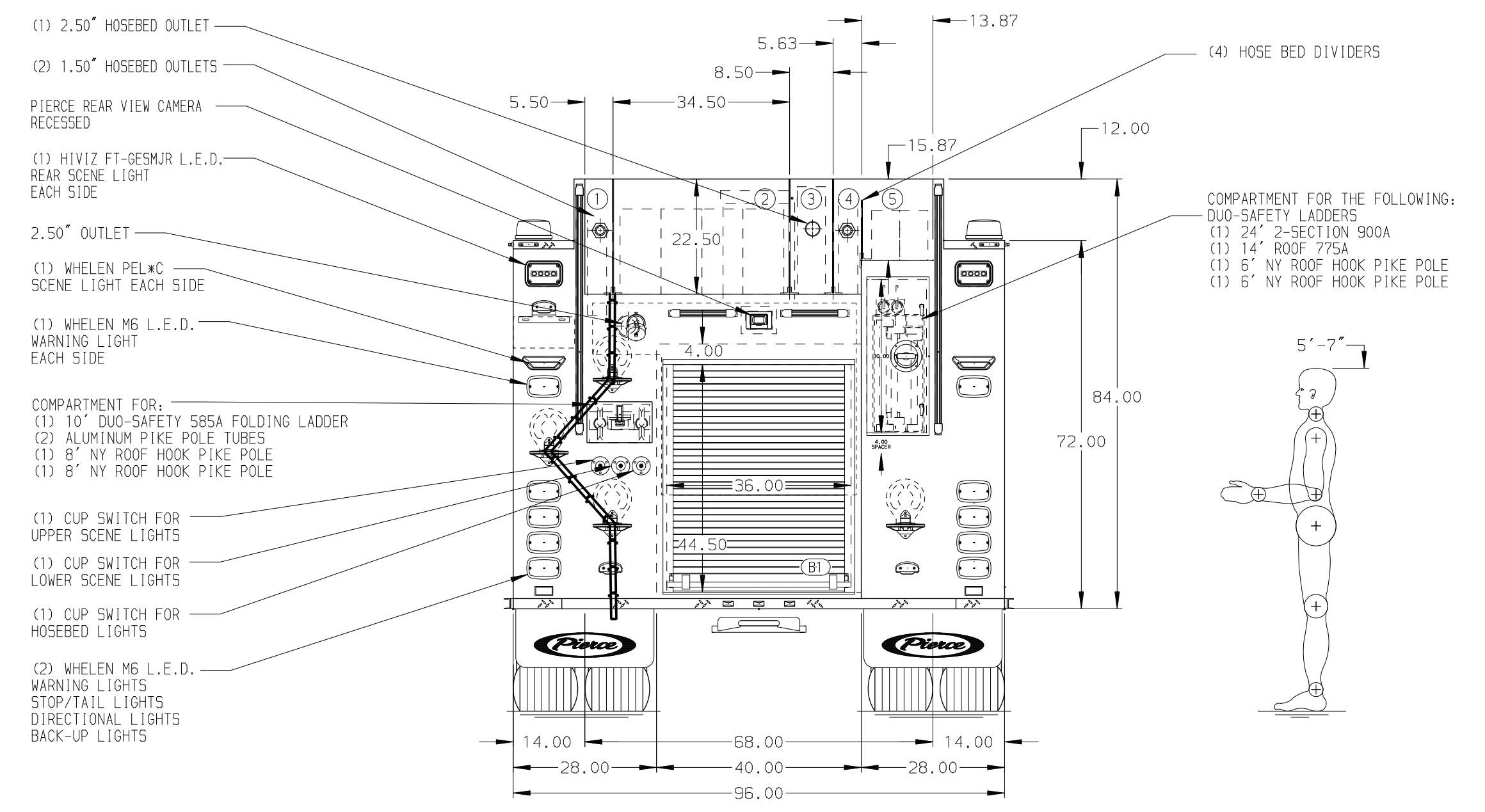
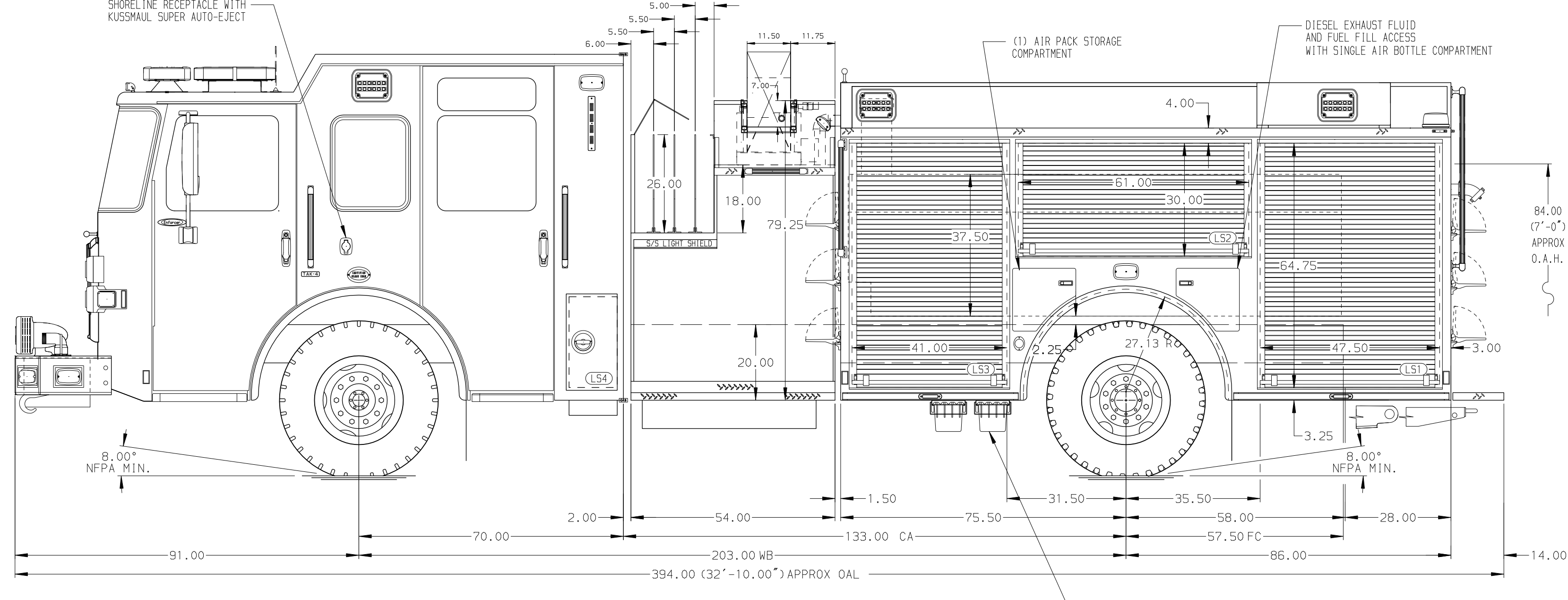


- HOSEBED CAPACITIES**
- ① 300' OF 2.00" D.J. HOSE
 - ② 1000' OF 5.00" D.J. HOSE
 - ③ 300' OF 3.00" D.J. HOSE
 - ④ 300' OF 2.00" D.J. HOSE
 - ⑤ 300' OF 3.00" D.J. HOSE



ALUMINUM BODY MAXIMUM O.A.L. 392.00" MAXIMUM O.A.H. 118.00"

NOTE
DIMENSIONS SHOWN ARE APPROXIMATE AND ARE SUBJECT TO MINOR DEVIATIONS AS MAY OCCUR OR BE NECESSARY IN CONSTRUCTION. MINOR DETAILS NOT SHOWN.

- 1. BATTERY CHARGER LOCATED BEHIND DRIVERS SEAT
- 2. BATTERY CHARGE INDICATOR LOCATED IN DRIVERS SEAT RISER
- 3. AIR INLET/OUTLET WITH DISCONNECT FITTING LOCATED IN DRIVERS SIDE STEP WELL
- 4. AUTOMATIC TIRE CHAINS

13APR26	JER	SJS	CHASSIS DATA
09DEC25	JER	SJS	MAKE
12NOV25	JER	SJS	PIERCE
04NOV25	JER	SJS	MODEL
31OCT25	JER	SJS	ENFORCER
REV	DATE	BY	CH

		JOB NO.	40223
		SCALE	DATE
TITLE	2000GPM, 750G TANK, 750G WATER, OG FOAM ENFORCER 161", HARD WIRED	DRAWN BY	JER
FOR	BUREAU OF ROSELLE PARK ROSELLE PARK, NEW JERSEY	CHECKED BY	SZE
DWG NO.	40223AD	SHEET SIZE	SHEET NO.
		D	1 OF 1