

Pumper, PUC

BODY

Pumper, PUC, Aluminum

CHASSIS

Enforcer Chassis, PUC

CHASSIS

AXLE, FRONT, CUSTOM

22,800 Lb Dana Axle

AXLE, REAR

27,000 Lb Dana Axle

ENGINE

510 HP Paccar MX13 Engine

TRANSMISSION

Allison 6th Gen, 4000 EVS P

BUMPER

22" Extended Painted Steel

CAB

7010 Enforcer Cab, PUC

BODY

TOTAL TANK CAPACITY

750 Gallon Poly Tank, 67 LHB

WATER CAPACITY

730 Gallons of Water

FOAM CELL CAPACITY

20 Gallon Foam Cell

COMPT, PUMPER, REAR

33.50" FF RollUp Rear Compt w/Tailboard, PUC

COMPT, PUMPER, LEFT SIDE

189" RollUp Full Height & Depth Front & Rear, PUC

COMPT, PUMPER, RIGHT SIDE

189" RollUp Full Height & Depth Front & Rear, PUC

FIRE SUPPRESSION

PUMPHOUSE

Control Zone, PUC

PUMP

1500 GPM Pierce PUC

CROSSLAYS, 1.50"

(2) 1.50", Poly Trays, 200'

CROSSLAYS, 2.50"

(1) 2.50", Poly Tray, 200'

SPEEDLAYS

GENERATOR

Generator Not Required

FOAM SYSTEM

Husky 3 Single Agent Foam System

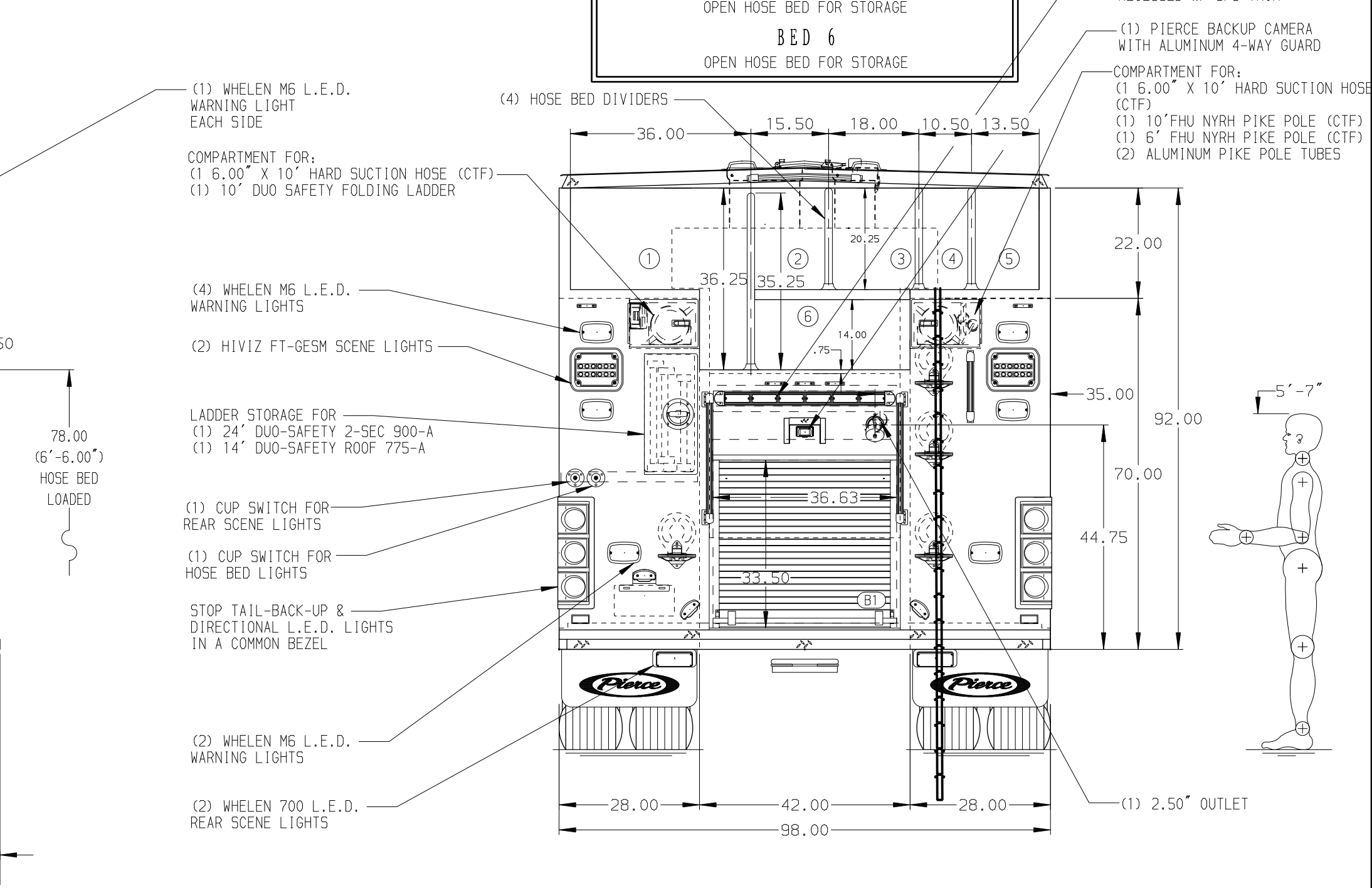
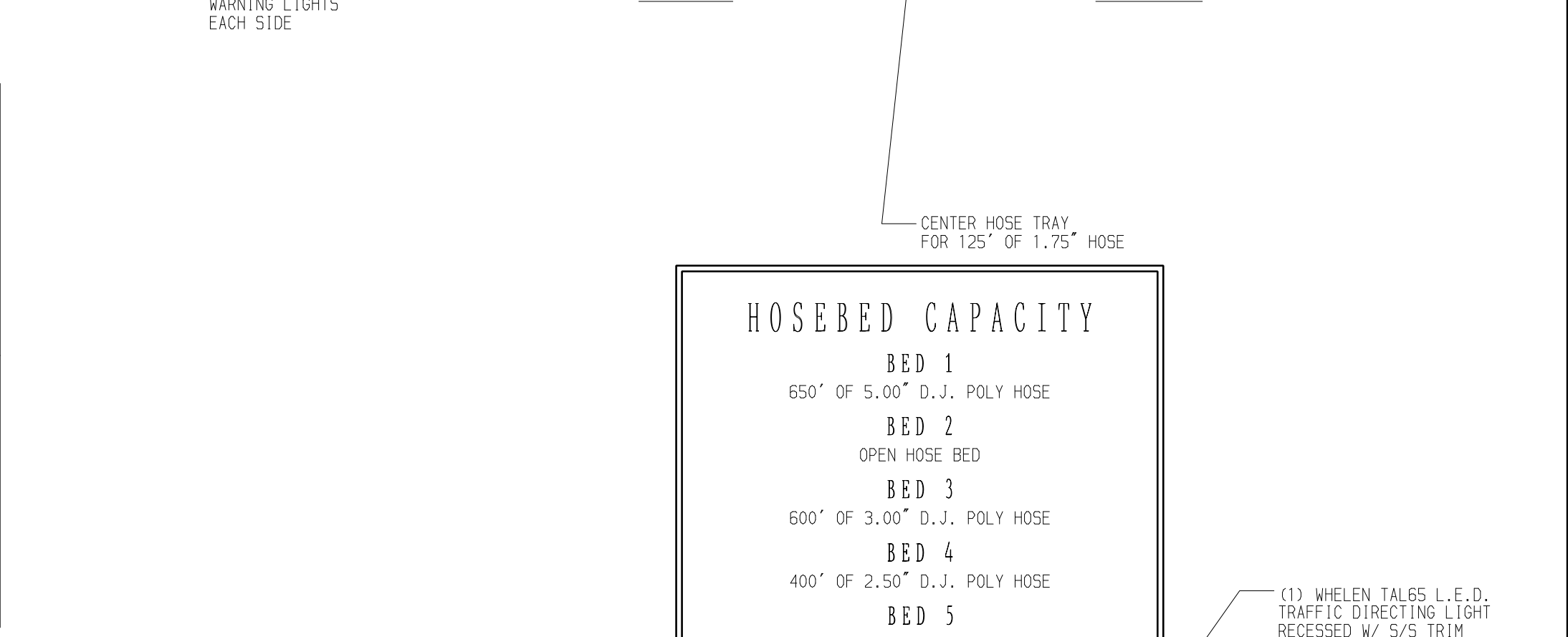
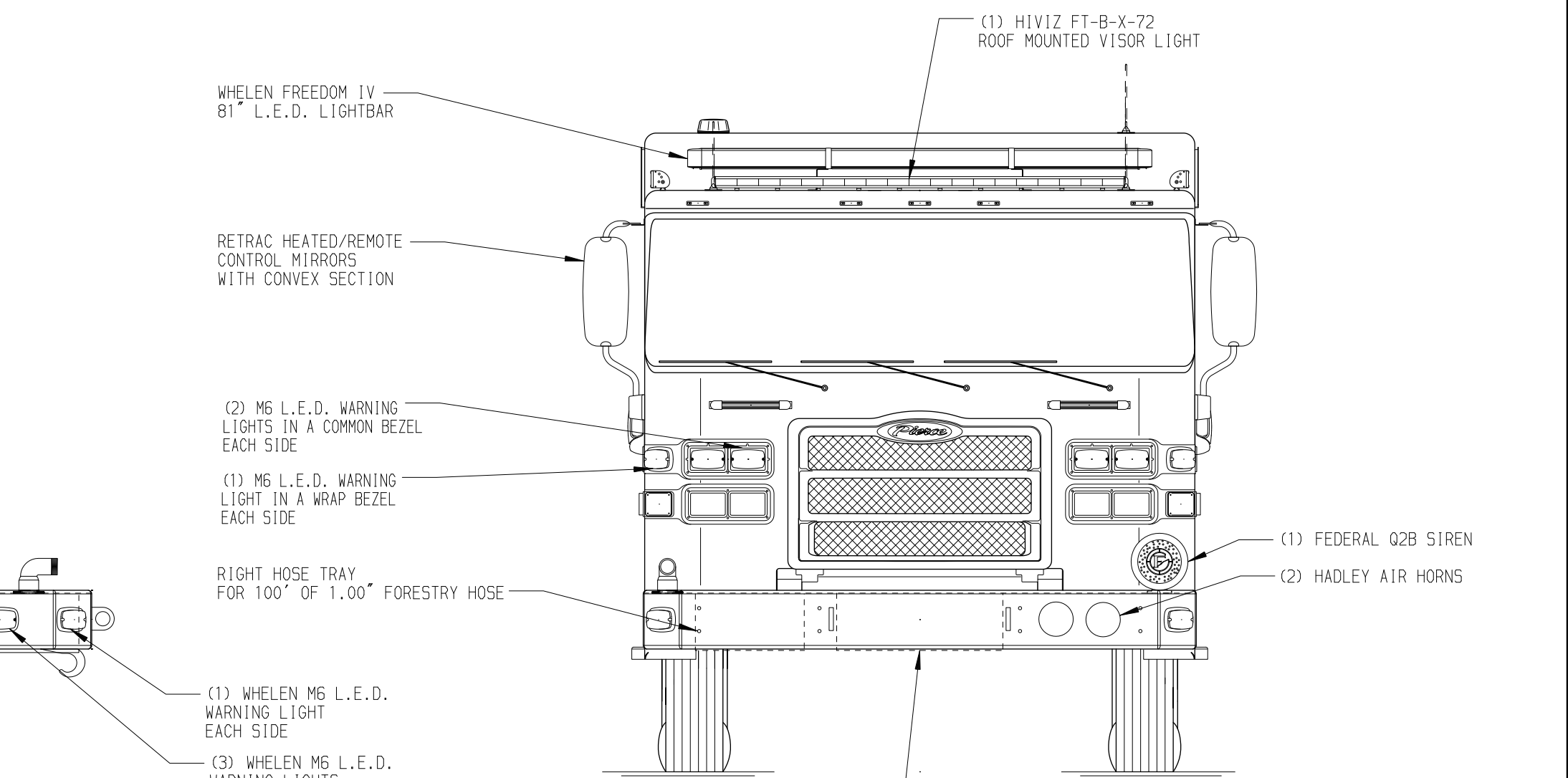
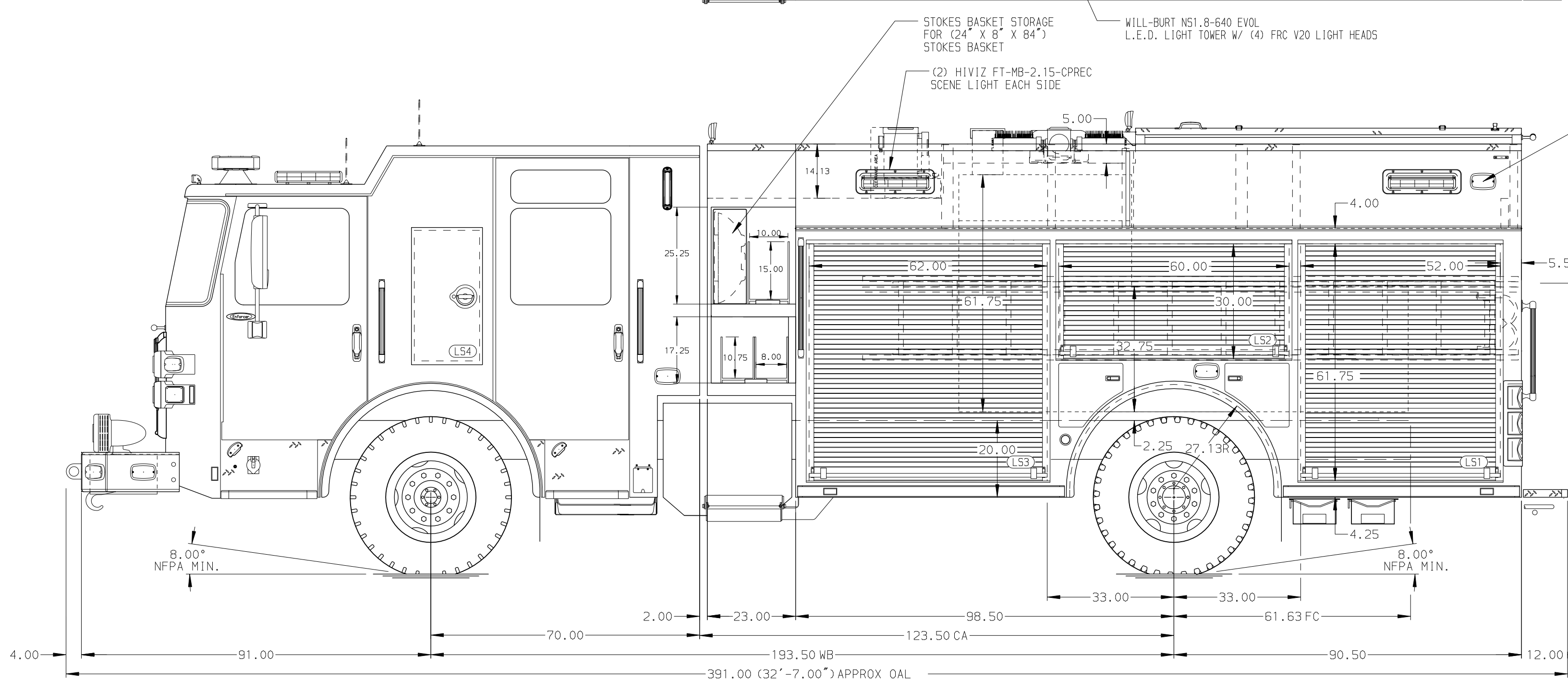
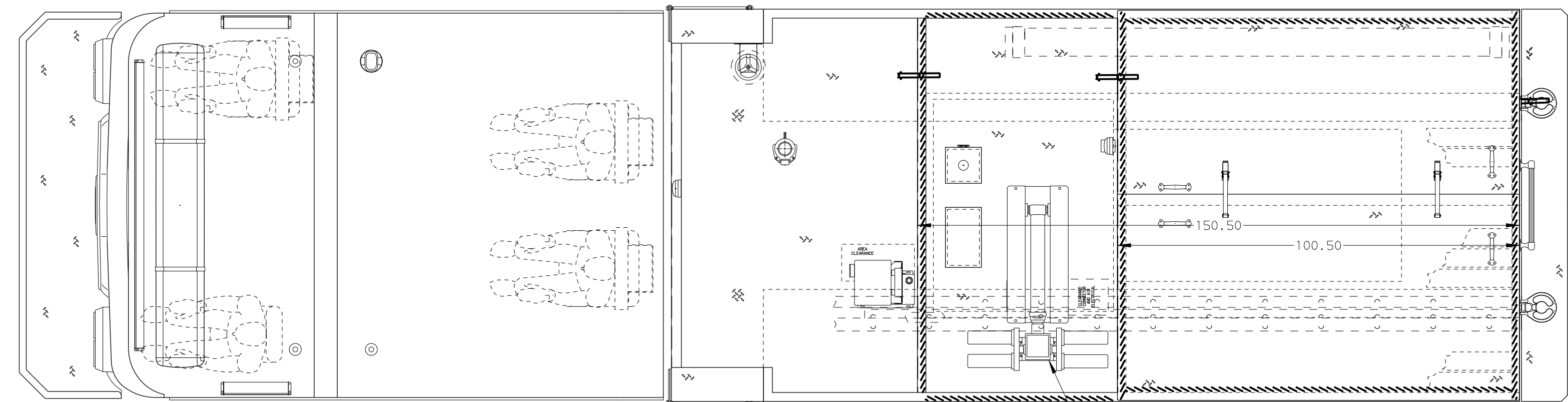
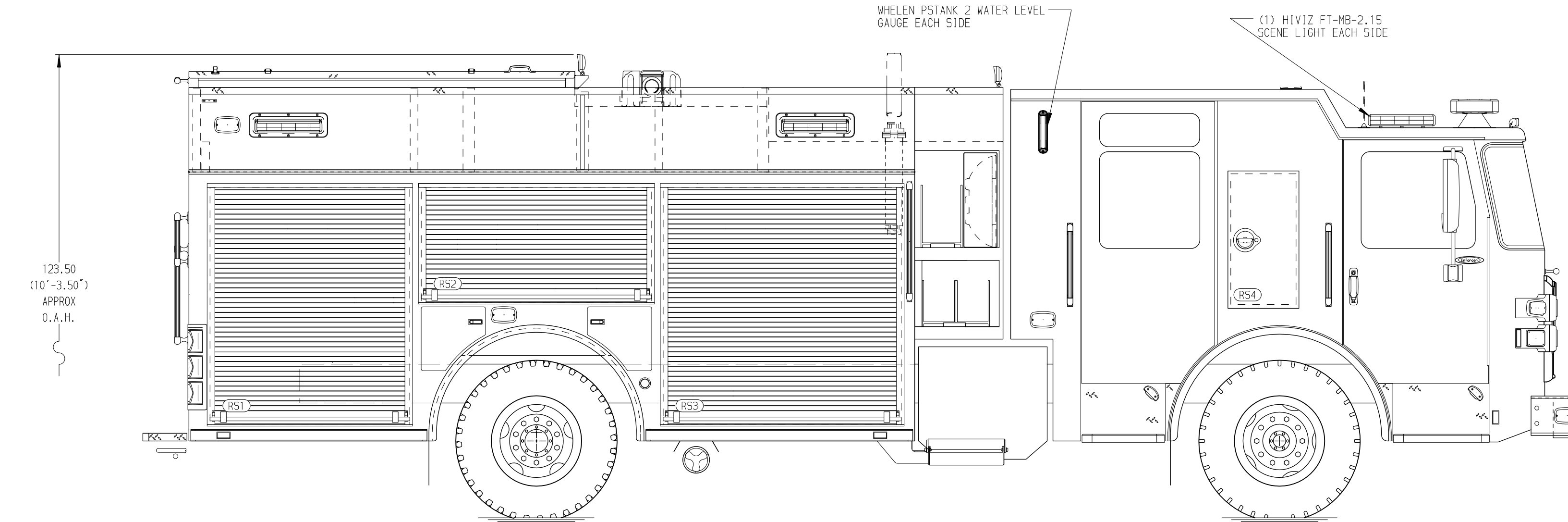
SAFETY

Side Roll and Frontal Impact Protection

NOTE  
DIMENSIONS SHOWN ARE APPROXIMATE AND ARE SUBJECT TO MINOR DEVIATIONS AS MAY OCCUR OR BE NECESSARY IN CONSTRUCTION.  
MINOR DETAILS NOT SHOWN.

1. ONE 2.50" OUTLET W/ 2.50" PLUMBING ON TOP OF THE RIGHT SIDE OF THE BUMPER
2. 120V NEMA TWIST LOCK SHORELINE RECEPTACLE LOCATED ON DRIVER'S SIDE STEPWELL
3. AIR INLET WITH DISCONNECT COUPLING IN THE DRIVER SIDE STEPWELL
4. BATTERY CHARGER LOCATED PER ORDER
5. BATTERY CHARGE INDICATOR LOCATED ON DRIVER SEAT RISER
6. EIGHT ADJUSTABLE SHELVES LOCATED PER ORDER
7. TWO FLOOR MOUNTED SLIDE-OUT TRAYS LOCATED PER ORDER
8. ONE SPECIAL DEPTH ADJUSTABLE SHELF LOCATED PER ORDER
9. ONE FOUR DRAWER CTECH CABINET ASSEMBLY LOCATED PER ORDER
10. ONE SWING-OUT ALUMINUM TOOLBOARD LOCATED PER ORDER

11. XANTREX INVERTER LOCATED PER ORDER
12. ONSPOUT AUTOMATIC TIRE CHAINS TO BE PROVIDED AT THE REAR
13. ONE ADJUSTABLE TILT/ SLIDE-OUT TRAY LOCATED PER ORDER
14. ONE FLOOR MOUNTED TRAY WITH SIDE SLIDES
15. ONE VERTICAL PARTITION LOCATED PER ORDER
16. 1.50" OUTLET W/ 2.00" PLUMBING LOCATED IN THE CENTER HOSE TRAY



		JOB NO.	40335
MANUFACTURING INC.		SCALE	DATE
		1:24	
		DRAWN BY	08JUL24
		LST	
		CHECKED BY	09JUL24
		MMF	
		SHEET SIZE	SHEET NO.
		D	1 OF 1

				CHASSIS DATA	TITLE	Pierce Pumper Approval Drawing
				MAKE	FOR	Kootenai County Fire and Rescue
				PIERCE		
				MODEL	DWG NO.	40335AD
				ENFROCER		
REV	DATE	BY	CH			

				CHASSIS DATA	TITLE	Pierce Pumper Approval Drawing
				MAKE	FOR	Kootenai County Fire and Rescue
				PIERCE		
				MODEL	DWG NO.	40335AD
				ENFROCER		
REV	DATE	BY	CH			