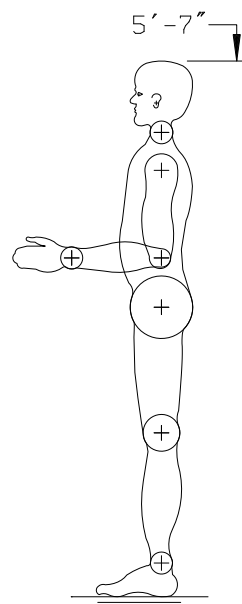
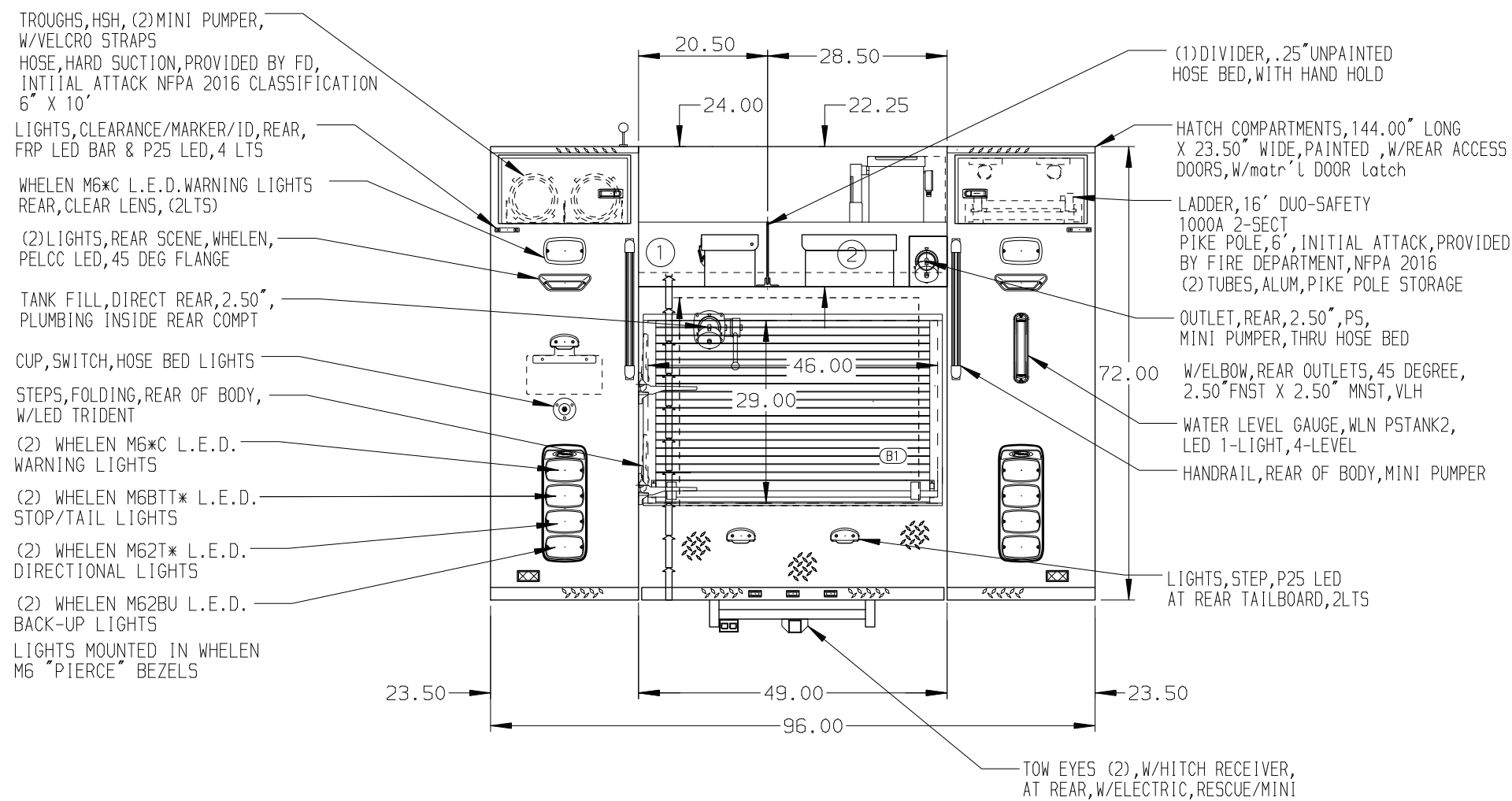


- HOSEBED CAPACITIES
- 400' OF 1.50" D.J. POLYESTER HOSE
 - 300' OF 2.50" D.J. POLYESTER HOSE



ALUMINUM BODY

NOTE
DIMENSIONS SHOWN ARE APPROXIMATE AND ARE SUBJECT TO MINOR DEVIATIONS AS MAY OCCUR OR BE NECESSARY IN CONSTRUCTION.
MINOR DETAILS NOT SHOWN.

WHEEL CHOCKS, SAC-44-E, FOLDING MOUNTING BRKTS, CHOCKS, SAC-44-E, FOLDING, SHIPPED LOOSE

REV.	DATE	BY	CHK'D
09JUN25	VHO	DDR	
02APR25	ADP	EEM	

CHASSIS DATA
CHASSIS
FORD
MODEL
F-550
4X4

		MANUFACTURING INC. BRADENTON, FLORIDA		JOB NO.	40355
TITLE		1500-D-230 POLY, 20 FOAM, 84"CA, MINI PUMPER BODY (2) SPEEDLAYS		DATE	31JAN25
FOR		MCARTHUR FIRE DEPARTMENT MCARTHUR, OH		DRAWN BY	RHU
DRWG. NO.		40355AD		CHK'D BY	AJA
SHEET NO.		1 OF 1		SHEET SIZE	D