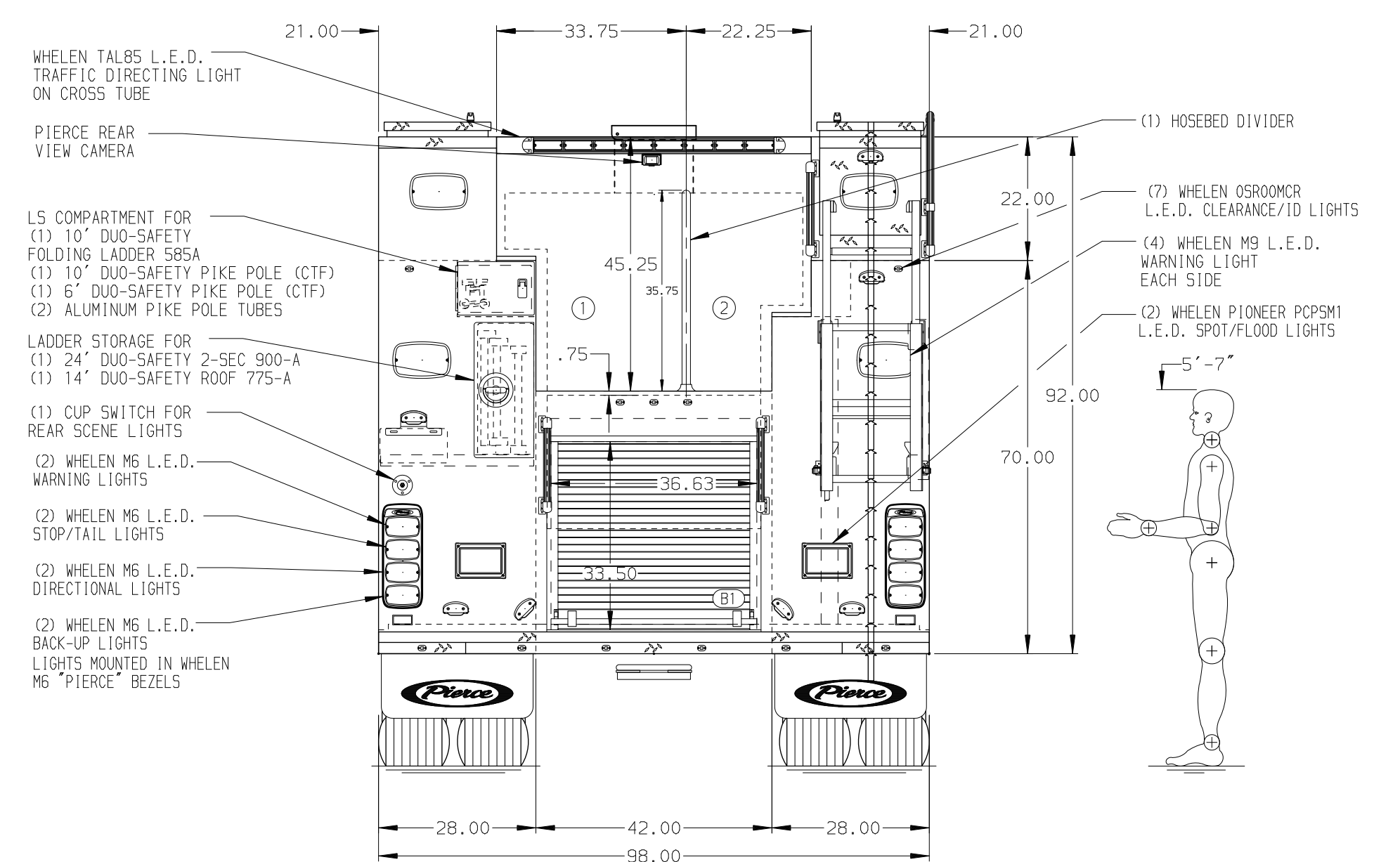
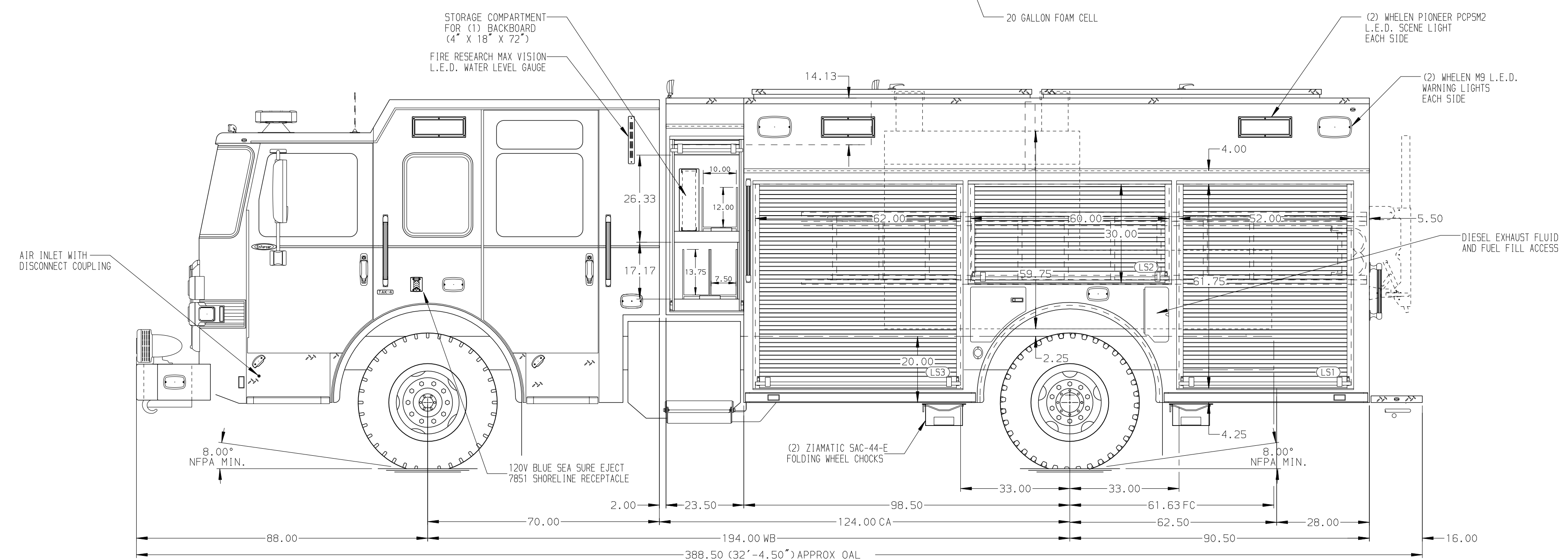


HOSEBED CAPACITIES

① 1000' OF 5.00" D.J. HOSE

② 600' OF 2.50" D.J. HOSE



ALUMINUM BODY

NOTE  
DIMENSIONS SHOWN ARE APPROXIMATE AND ARE SUBJECT TO MINOR DEVIATIONS AS MAY OCCUR OR BE NECESSARY IN CONSTRUCTION. MINOR DETAILS NOT SHOWN.

- BATTERY CHARGER LOCATED BEHIND THE DRIVER'S SEAT
- BATTERY CHARGER INDICATOR LOCATED ON DRIVER'S SEAT RISER
- DUAL L.E.D. LIGHT STRIPS LOCATED IN HOSE BED
- FOUR FULL WIDTH/DEPTH ADJUSTABLE SHELVES LOCATED PER ORDER
- TWO FLOOR MOUNTED SLIDE-OUT TRAYS WITH SIDE SLIDES LOCATED PER ORDER
- TWO SWING-OUT ALUMINUM TOOL BOARDS LOCATED PER ORDER
- PARTITION BETWEEN L51/B1 AND R51/B1

| CUSTOMER APPROVAL  |         |   |    | Pierce MANUFACTURING INC. |         | JOB NO.   | 40398 |
|--------------------|---------|---|----|---------------------------|---------|-----------|-------|
| APPROVED BY: _____ |         |   |    |                           |         | SCALE     | DATE  |
| DATE: _____        |         |   |    |                           |         | 1:24      |       |
| CHASSIS DATA       | TITLE   | 1500-D-750P, 730 WATER W/20 FOAM, 189" PUC RESCUE |    | DRAWN BY                  | 06MAR23 |           |       |
| MAKE               | FOR     | PIERCE FIELD UNIT                                 |    | CHECKED BY                | 06MAR23 |           |       |
| PIERCE             |         | APPLETON, WISCONSIN                               |    | SHEET SIZE                |         | SHEET NO. |       |
| MODEL              | DWG NO. | 40398AD   |    |                           |         |           |       |
| ENFORCER           |         |   |    |                           |         |           |       |
| REV                | DATE    | BY  | CH |                           |         |           |       |