

Pumper, PUC

BODY

Pumper, PUC, Aluminum

CHASSIS

Enforcer Chassis, PUC

CHASSIS

AXLE, FRONT, CUSTOM

22,800 Lb Dana Axle

AXLE, REAR

33,500 Lb Meritor Axle

ENGINE

400 HP Cummins L9 Engine

TRANSMISSION

Allison 6th Gen, 3000 EVS P

BUMPER

19" Extended Painted Steel

CAB

7010 Impel FR Cab, PUC

BODY

TOTAL TANK CAPACITY

1020 Gallon Poly Tank

WATER CAPACITY

1000 Gallons of Water

FOAM CELL CAPACITY

20 Gallons of Foam

COMPT, PUMPER, REAR

50.50" FF RollUp Rear Compt w/Tailboard, PUC

COMPT, PUMPER, LEFT SIDE

189" RollUp Full Height & Depth Front & Rear, PUC

COMPT, PUMPER, RIGHT SIDE

189" RollUp Full Height & Depth Front & Rear, PUC

FIRE SUPPRESSION

PUMPHOUSE

Control Zone, PUC

PUMP

1500 GPM Pierce PUC-NG

CROSSLAYS, 1.50"

(2) 1.50", Poly Trays, 200'

CROSSLAYS, 2.50"

(1) 2.50", Poly Trays, 200'

SPEEDLAYS

GENERATOR

Generator Not Required

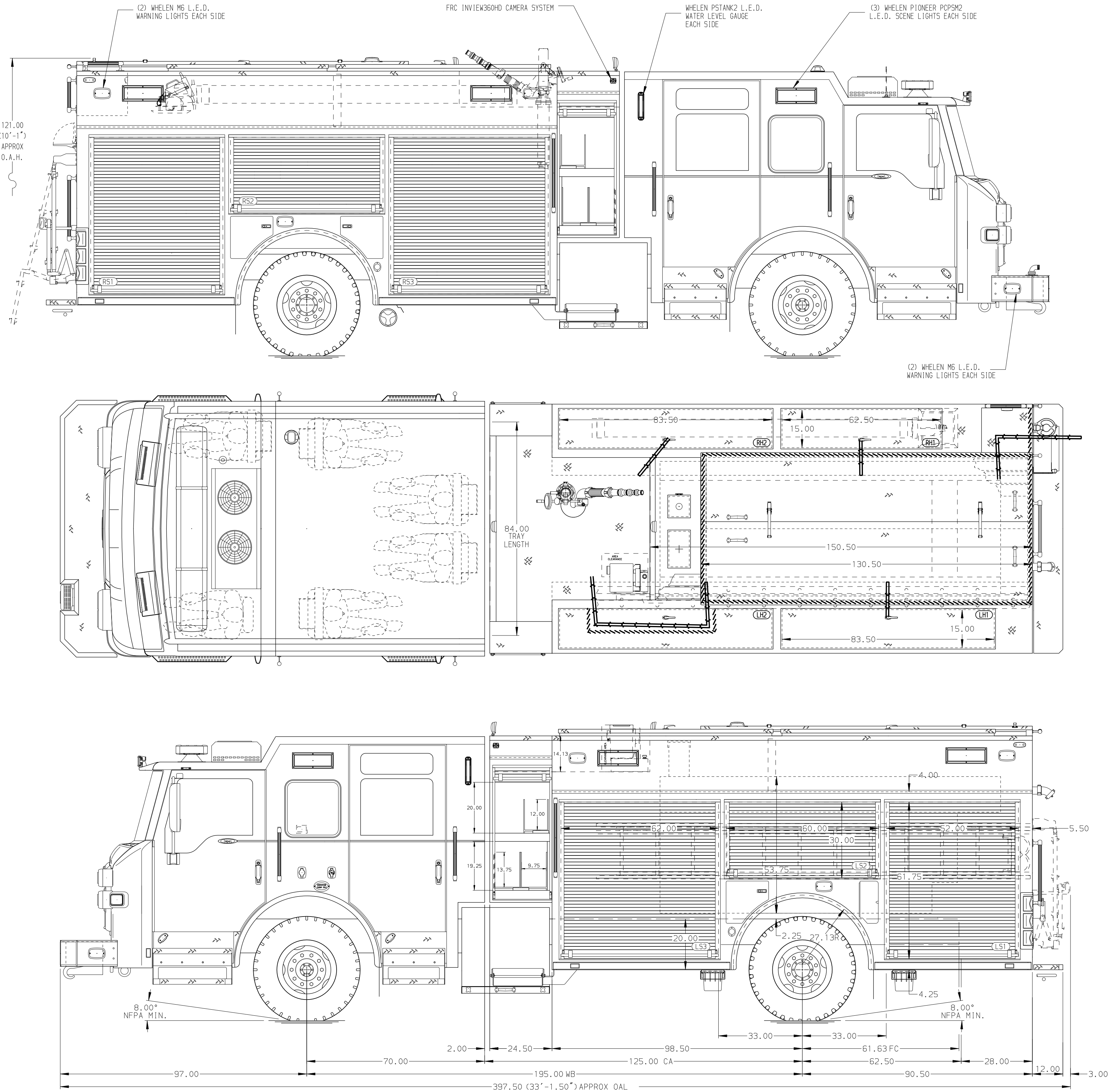
FOAM SYSTEM

Husky 3 Single Agent Foam System

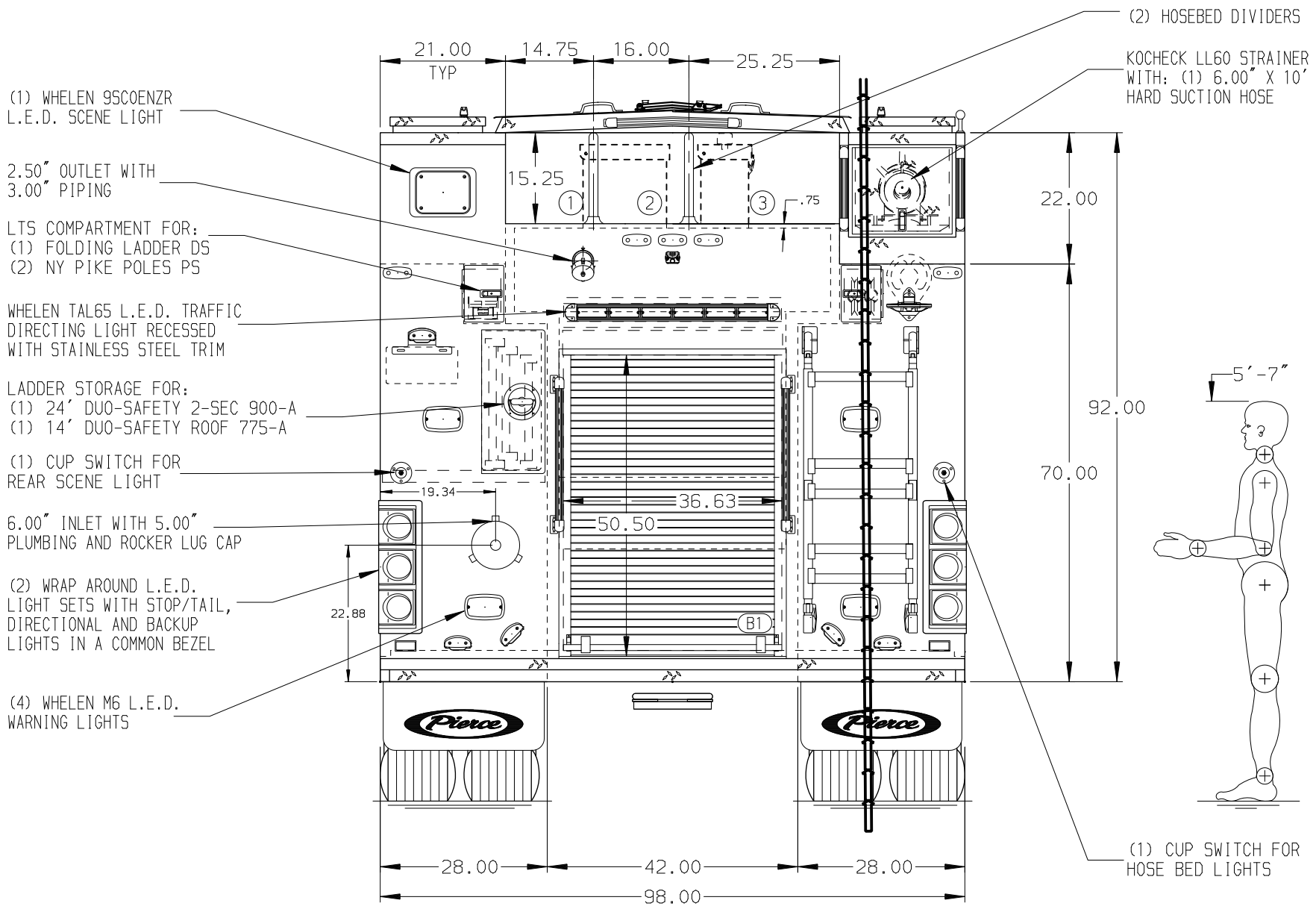
NOTE
DIMENSIONS SHOWN ARE APPROXIMATE AND ARE SUBJECT TO MINOR DEVIATIONS AS MAY OCCUR OR BE NECESSARY IN CONSTRUCTION.
MINOR DETAILS NOT SHOWN.

1. ONE 1.50" OUTLET WITH 2.00" PIPING AND SWIVEL LOCATED ON RIGHT SIDE TOP OF BUMPER
2. SHORELINE RECEPTACLE WITH KUSSMAUL SUPER AUTO-EJECT LOCATED ON DRIVER SIDE OF THE CAB
3. KUSSMAUL AIR INLET WITH DISCONNECT COUPLING ON DRIVER SIDE OF THE CAB
4. BATTERY CHARGER LOCATED PER ORDER
5. BATTERY CHARGE INDICATOR LOCATED THROUGH WINDOW BEHIND DRIVER SEAT
6. FIVE ADJUSTABLE SHELVES LOCATED PER ORDER
7. THREE FLOOR MOUNTED SLIDE-OUT TRAYS LOCATED PER ORDER
8. TWO INVERTED ADJUSTABLE SHELVES LOCATED PER ORDER
9. THREE ADJUSTABLE TILTING SLIDE-OUT TRAYS LOCATED PER ORDER
10. ONE CTECH 3-DRAWER ASSEMBLY LOCATED PER ORDER

11. ONE SWING-OUT ALUMINUM TOOL BOARD LOCATED PER ORDER
12. ALUMINUM PEGBOARD ON WALLS OF COMPARTMENTS LOCATED PER ORDER
13. THREE STORAGE BLING WITH STRAPS FOR FIRE EXTINGUISHERS LOCATED PER ORDER
14. TWO 120V 7-PLACE RECEPTACLE STRIPS MOUNTED IN CAB PER SHOP ORDER
15. TWO MOUNTING BRACKETS FOR (01Y) FIRE EXTINGUISHERS LOCATED PER ORDER
16. TWO SLIDE-OUT TOOLBOARDS WITH PEGBOARD PATTERN AND PAINTED FINISH LOCATED PER ORDER
17. ONE VERTICAL PARTITION LOCATED PER ORDER



HOSEBED CAPACITY	
BED 1	300' OF 2.50" D.J. POLY HOSE
BED 2	300' OF 2.50" D.J. POLY HOSE
BED 2	500' OF 5.00" D.J. POLY HOSE



REV	DATE	BY	CH	IMPEL FR
▽	07MAR25	JJB	GKH	MAKE
▽	20NOV24	JJB	GKH	PIERCE
▽	24OCT24	JJB	GKH	MODEL

Pierce MANUFACTURING INC.		JOB NO.	40610
TITLE		SCALE	DATE
Pierce PUC Pumper Approval Drawing		1:24	
FOR		DRAWN BY	JJB 27AUG24
Town of Center Fire Department		CHECKED BY	MMF 27AUG24
DWG NO.		SHEET SIZE	D
40610AD		SHEET NO.	1 OF 1