

Pumper, PUC

BODY

Pumper, PUC, Aluminum

CHASSIS

Velocity Chassis, PUC (Big Block)

CHASSIS

AXLE, FRONT, CUSTOM

22,800 Lb TAK-4 Axle

AXLE, REAR

31,000 Lb Meritor Axle

ENGINE

525 HP Cummins X12 Engine

TRANSMISSION

Allison 6th Gen, 4000 EVS P

BUMPER

22" Extended Stainless Steel

CAB

7010 Velocity FR Cab, PUC

BODY

TOTAL TANK CAPACITY

1000 Gallon Poly Tank

WATER CAPACITY

980 Gallons of Water

FOAM CELL CAPACITY

20 Gallon Foam Cell

COMPT, PUMPER, REAR

33.50" FF RollUp Rear Compt w/Tailboard, PUC

COMPT, PUMPER, LEFT SIDE

214" Lap/RollUp Full Height & Depth Front & Rear, PUC

COMPT, PUMPER, RIGHT SIDE

214" Lap Full Height & Depth Front & Rear, PUC

FIRE SUPPRESSION

PUMPHOUSE

Control Zone, PUC

PUMP

1500 GPM Pierce PUC

CROSSLAYS, 1.50"

(2) 1.50", Poly Trays, 200'

CROSSLAYS, 2.50"

(1) 2.50", Poly Tray, 200'

SPEEDLAYS

SpeedLays Not Required

GENERATOR

Generator Not Required

FOAM SYSTEM

Husky 3 Single Agent Foam System

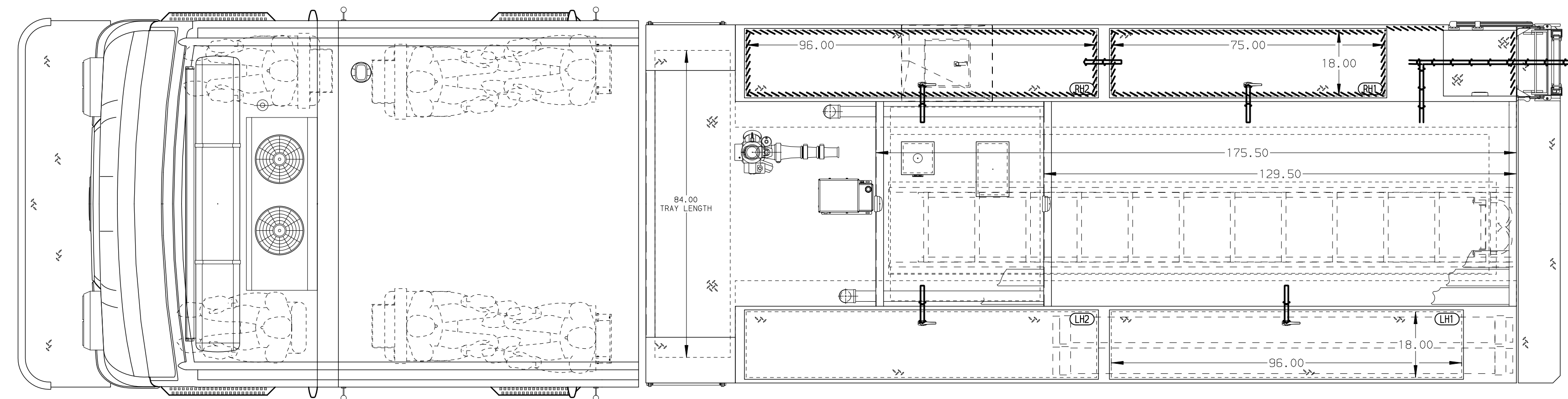
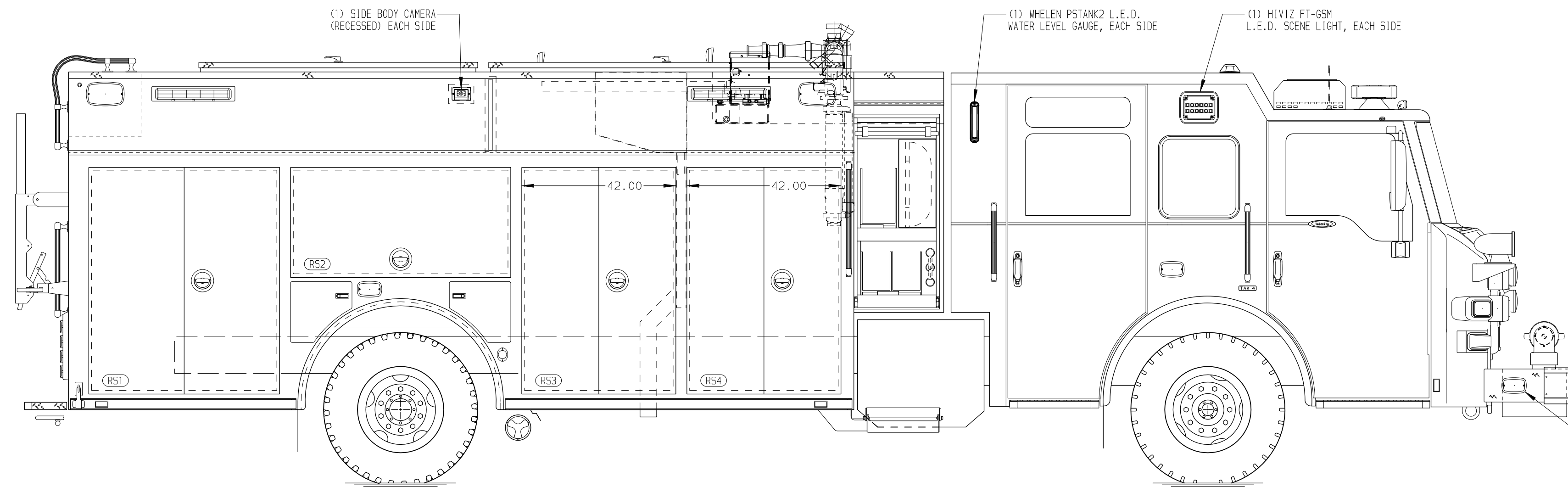
SAFETY

Side Roll and Frontal Impact Protection

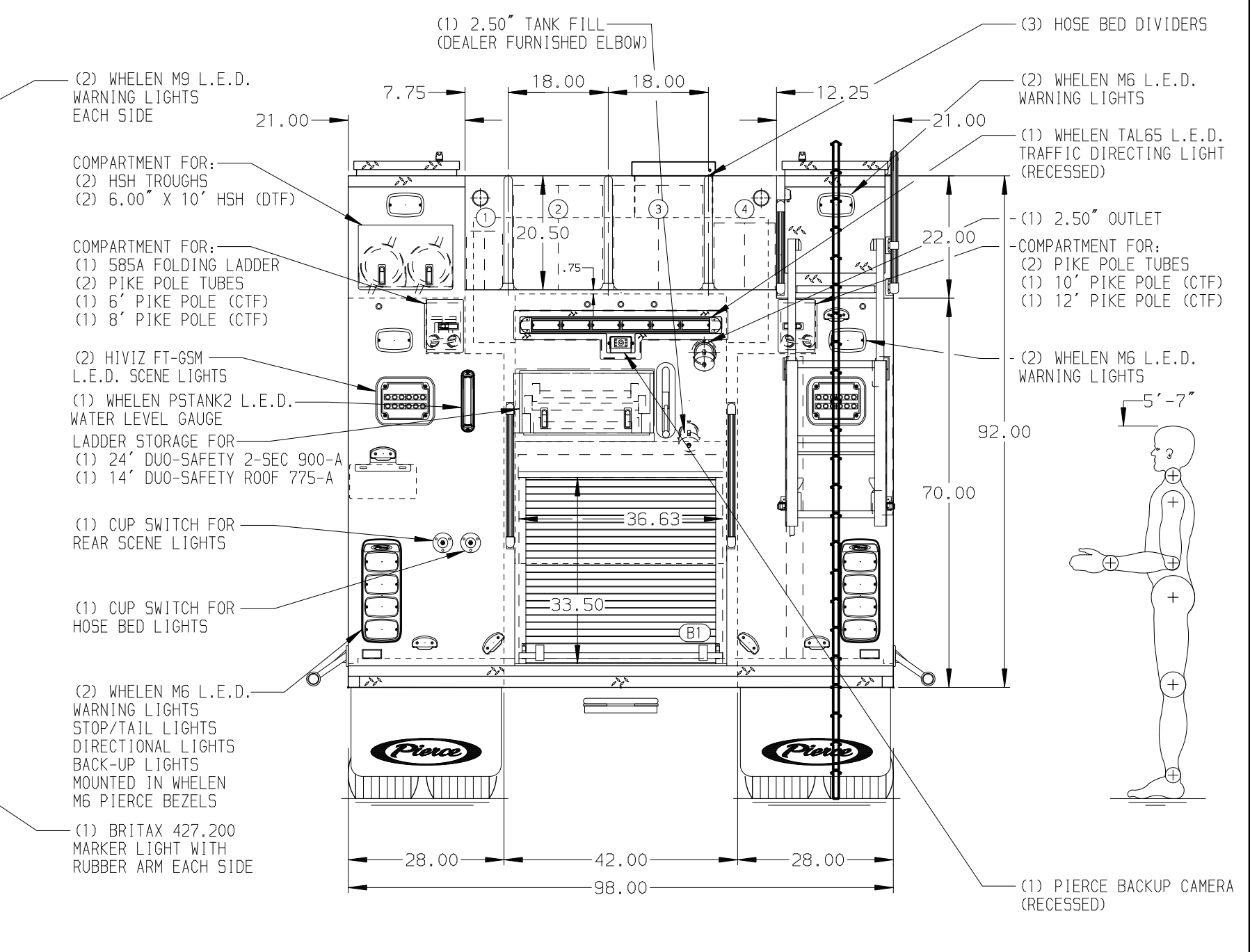
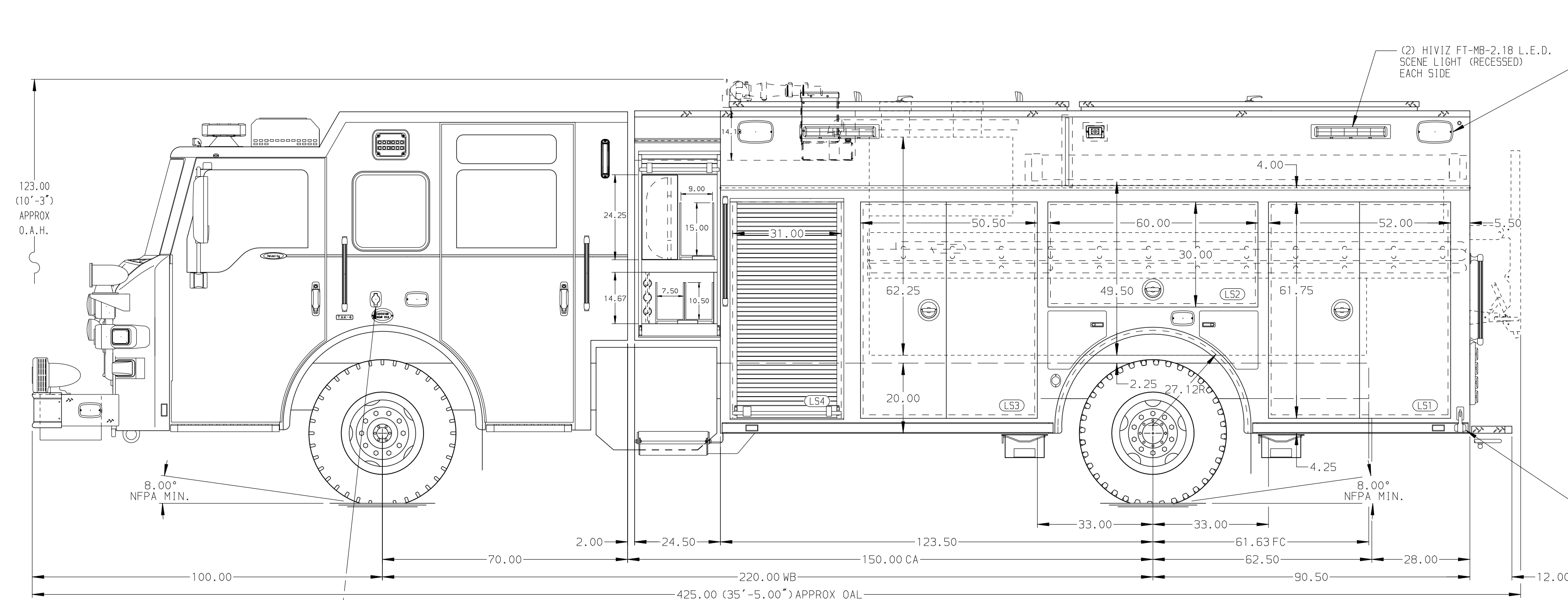
NOTE

DIMENSIONS SHOWN ARE APPROXIMATE AND ARE SUBJECT TO MINOR DEVIATIONS AS MAY OCCUR OR BE NECESSARY IN CONSTRUCTION. MINOR DETAILS NOT SHOWN.

- ONE 1.50" OUTLET WITH 2.00" PIPING AND SWIVEL LOCATED IN CENTER BUMPER TRAY
- BATTERY CHARGER LOCATED PER ORDER
- BATTERY CHARGE INDICATOR LOCATED ON DRIVER SEAT WITH BRACKET
- TWO ADDITIONAL TRAY FOR 200' OF 1.75" D.J.P HOSE
- ONE ADDITIONAL TRAY FOR 250' OF 2.50" D.J.P HOSE
- FIVE 120V DUPLEX RECEPTACLES LOCATED PER ORDER
- DUAL L.E.D. LIGHT STRIPS LOCATED IN HOSE BED



HOSEBED CAPACITY	
BED 1	300' OF 1.75" D.J. POLY HOSE
BED 2	500' OF 5.00" D.J. POLY HOSE
BED 3	500' OF 5.00" D.J. POLY HOSE
BED 4	300' OF 3.00" D.J. POLY HOSE



	JOB NO.	41057
	SCALE	DATE
Pierce MANUFACTURING INC.	TITLE	Pierce Pumper Approval Drawing
	FOR	Aboite Township-West Central Fire District
	DWG NO.	41057AD
	SHEET NO.	1 OF 1

REV	DATE	BY	CH	VELOCITY FR
1	130CT25	LST	SJS	CHASSIS DATA
2	29SEP25	LST	SJS	MAKE
3	22SEP25	LST	SJS	PIERCE
4	15AUG25	LST	SJS	MODEL