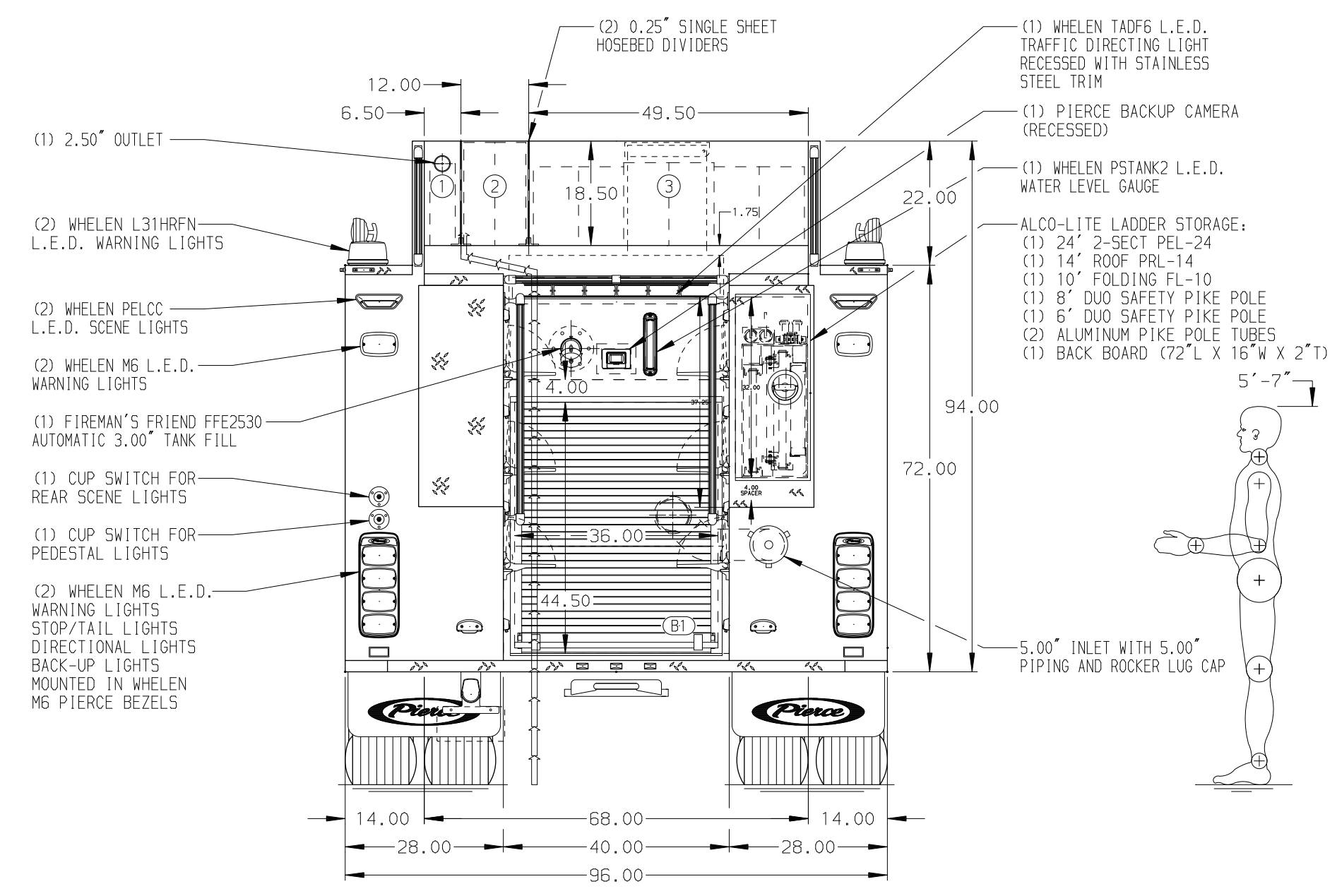
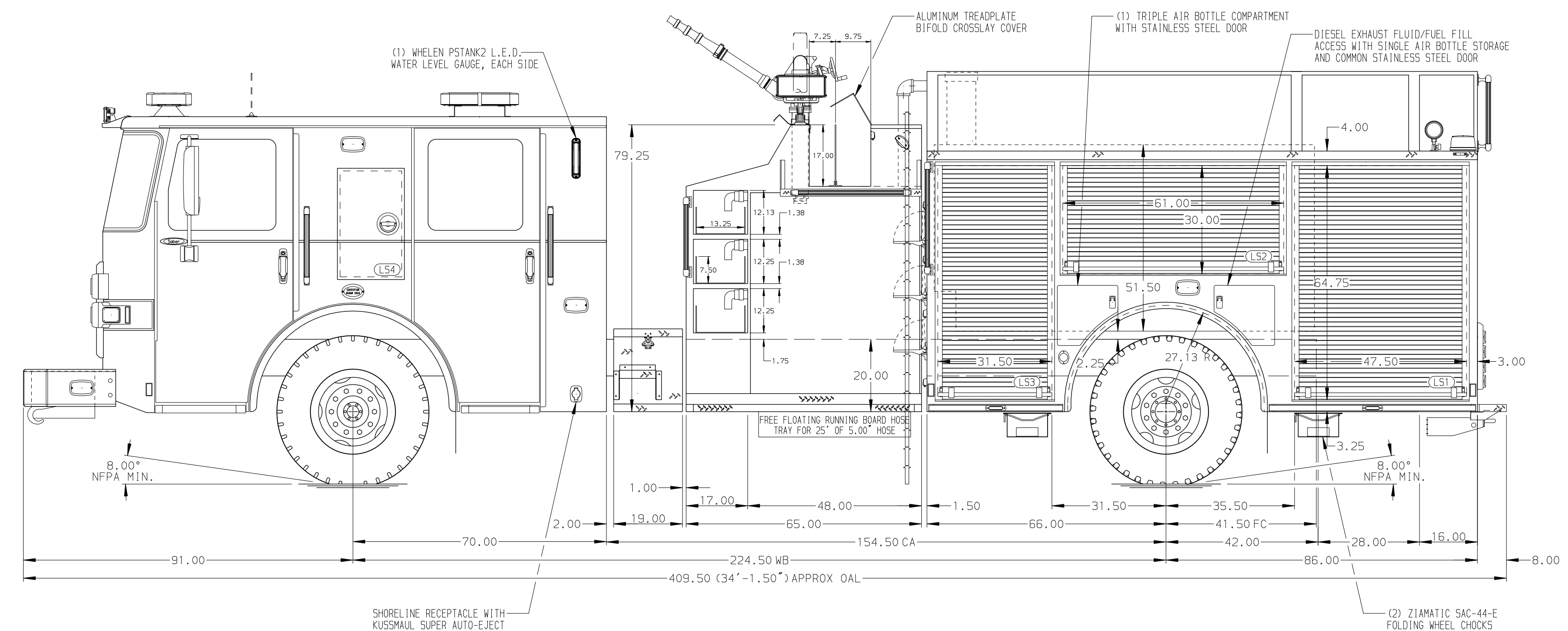


- HOSEBED CAPACITIES
- ① 200' OF 2.50" D.J. POLY HOSE
 - ② 500' OF 3.00" D.J. POLY HOSE
 - ③ 1200' OF 5.00" D.J. POLY HOSE



ALUMINUM BODY

NOTE
 DIMENSIONS SHOWN ARE APPROXIMATE AND ARE SUBJECT TO MINOR DEVIATIONS AS MAY OCCUR OR BE NECESSARY IN CONSTRUCTION. MINOR DETAILS NOT SHOWN.

REV	DATE	BY	CH	SABER FR
22DEC25	TYB	JAP		CHASSIS DATA
06OCT25	TYB	JAP		MAKE
09JUL25	RHU	JAP		PIERCE
15MAY25	JDA	CDU		MODEL

		JOB NO.	41237
		SCALE	DATE
TITLE 1500 GPM, 750G WATERTANK 152" PUMPER, HARDWIRED	FOR LAKE CITY FIRE DEPARTMENT LAKE CITY, SOUTH CAROLINA	DRAWN BY	JDA
		CHECKED BY	CDU
DWG NO.	41237AD	SHEET SIZE	D
		SHEET NO.	1 OF 1