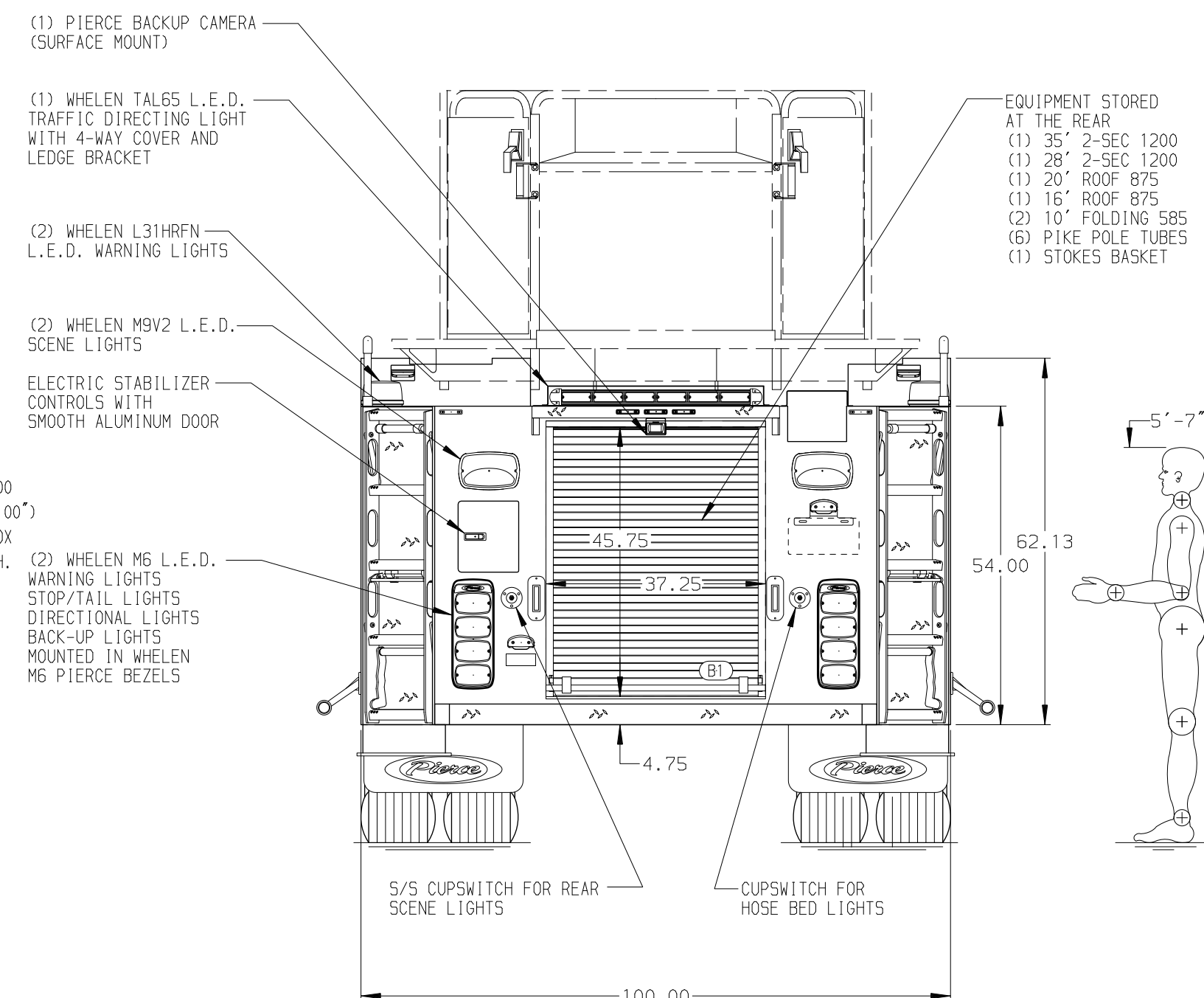
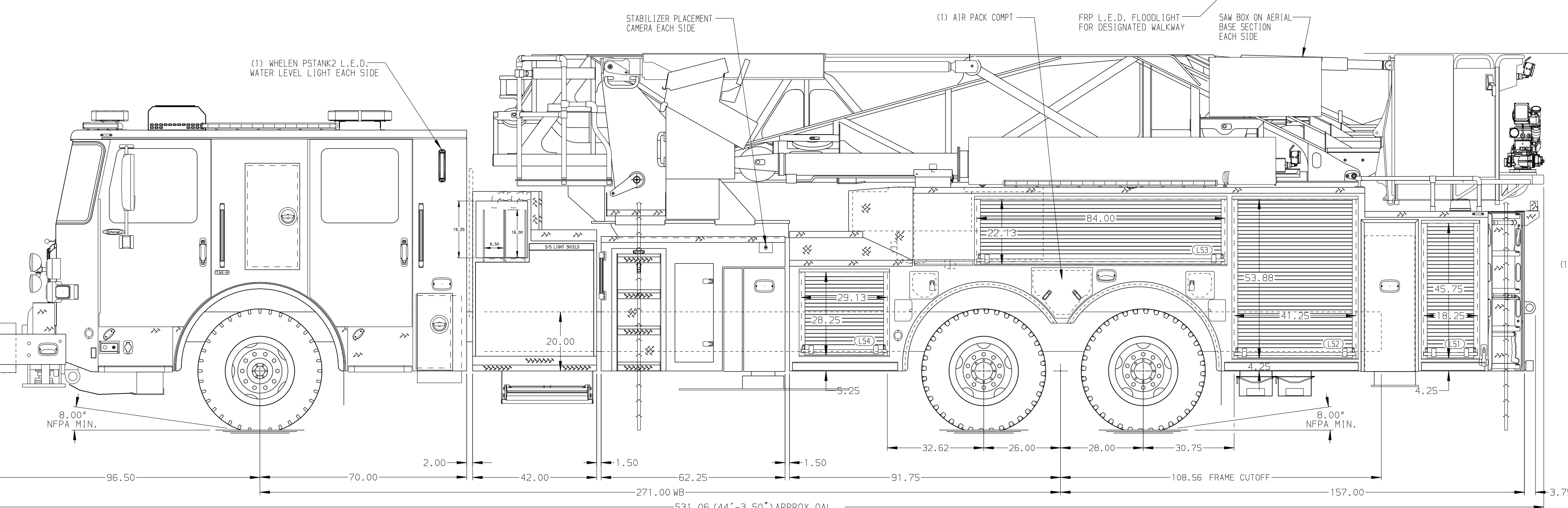


BODY 100' Ascendant Aerial Tower Alum Body COMPT, LEFT SIDE Full Height & Full Depth RollUp Doors COMPT, RIGHT SIDE Full Height RollUp Doors	TOTAL TANK CAPACITY 300 Gallon Poly Tank WATER CAPACITY 275 Gallons of Water FOAM CELL CAPACITY 25 Gallon Foam Cell FOAM SYSTEM Husky 3 Single Agent Foam System
--	---



CHASSIS Enforcer Chassis ENGINE 605 HP Cummins X15 Engine	CAB 7000 Enforcer Cab BUMPER 27\"/>	ELECTRICAL SYSTEM MUX TRANSMISSION Allison 6th Gen, 4000 EVS P	AXLE, FRONT, CUSTOM 24,000 Lb TAK-4 Axle AXLE, REAR 54,000 Lb Meritor Axle	PUMPHOUSE 42\"/>	CROSSLAYS, 1.50\" (2) 1.50\", With Trays, 200' CROSSLAYS, 2.50\" 2.50\" Crosslay Not Required	SPEEDLAYS Speedlays Not Required GENERATOR Generator Not Required	SAFETY Side Roll and Frontal Impact Protection
--	--	---	---	----------------------------	--	--	---

NOTE: DIMENSIONS SHOWN ARE APPROXIMATE AND ARE SUBJECT TO MINOR DEVIATIONS AS MAY OCCUR OR BE NECESSARY IN CONSTRUCTION. MINOR DETAILS NOT SHOWN.

- SHORELINE RECEPTACLE WITH KUSSMAUL SUPER AUTO-EJECT LOCATED ON DRIVER SIDE STEPWELL
- AIR INLET/OUTLET WITH DISCONNECT COUPLING IN THE DRIVER SIDE STEPWELL
- BATTERY CHARGER LOCATED PER ORDER
- BATTERY CHARGE INDICATOR LOCATED PER ORDER
- DUAL LIGHT STRIPS IN COMPARTMENTS PER ORDER
- ONE ADJUSTABLE TILT/SLIDE-OUT TRAY LOCATED IN COMPARTMENT PER ORDER
- FOUR ADJUSTABLE SHELVES LOCATED IN COMPARTMENTS PER ORDER
- RUD AUTOMATIC TIRE CHAINS PER ORDER
- ONE SLIDE-OUT TRAY LOCATED IN COMPARTMENT PER ORDER
- TWO FLOOR MOUNTED SLIDE-OUT TRAYS LOCATED IN COMPARTMENTS PER ORDER
- TWO ADJUSTABLE TOOLBOARDS LOCATED IN COMPARTMENTS PER ORDER
- TWO BACK WALL MOUNTED PEGBOARDS LOCATED IN COMPARTMENTS PER ORDER
- TWO SIDE WALL MOUNTED PEGBOARDS LOCATED IN COMPARTMENTS PER ORDER
- ONE REMOVABLE SMOOTH ALUMINUM FLOOR LOCATED IN COMPARTMENT PER ORDER
- FOUR RECEPTACLES LOCATED PER ORDER
- TECHNO LIGHTING AT TURNABLE CONSOLE
- TECHNO FIVE SECTION RUNS LIGHTING AT AERIAL DEVICE
- DC POWER TO AERIAL TIP
- WIRELESS FIXED CAMERA ON AERIAL TIP PER ORDER
- 3-in-1 LYFECOMBO BRACKETS AT AERIAL BASKET

MAX O.A.H. 130.00

		JOB NO.	41277
Pierce MANUFACTURING INC.		SCALE	DATE
TITLE 100' ASCENDANT AERIAL TOWER AND BODY ASSEMBLY		DRAWN BY	04JUN25
MAKE PIERCE		CHECKED BY	13JUN25
MODEL ENFORCER		SHEET SIZE	SHEET NO.
DWG NO.		41277AD	
REV		1 of 1	