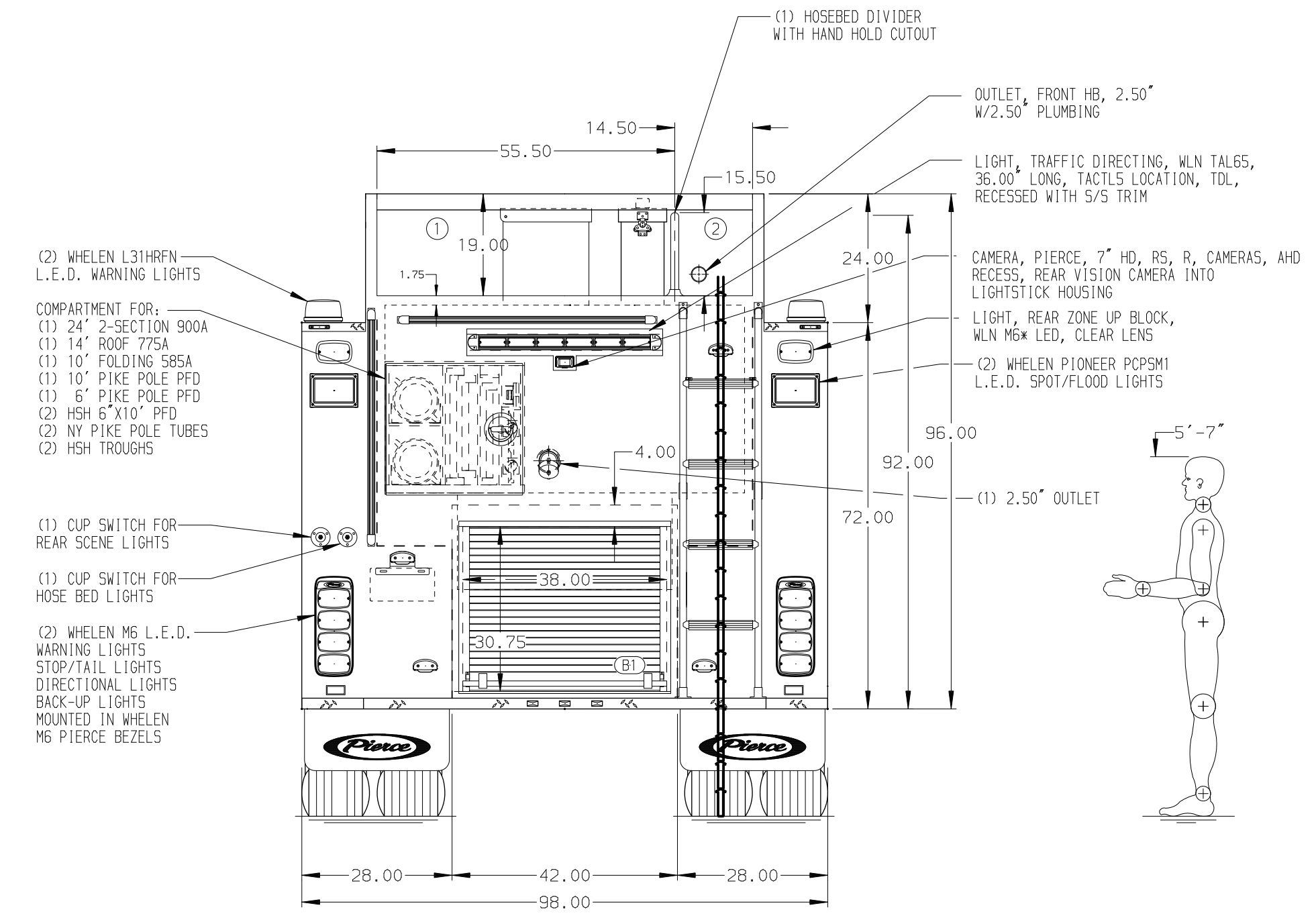
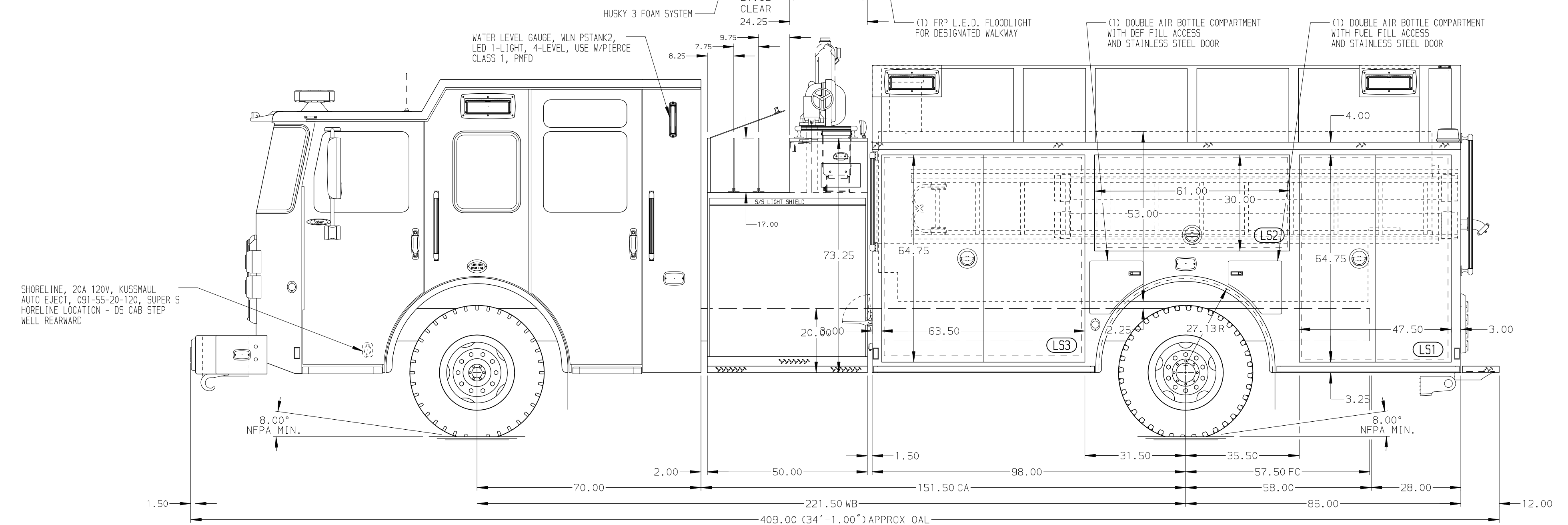


HOSEBED CAPACITIES

- 2000' OF 4.00" D.J. POLY HOSE
- 600' OF 2.50" D.J. POLY HOSE



ALUMINUM BODY SIDE ROLL AND FRONTAL IMPACT PROTECTION

NOTE
DIMENSIONS SHOWN ARE APPROXIMATE AND ARE SUBJECT TO MINOR DEVIATIONS AS MAY OCCUR OR BE NECESSARY IN CONSTRUCTION. MINOR DETAILS NOT SHOWN.

- AIR INLET WITH DISCONNECT COUPLING TO BE LOCATED IN DRIVER'S SIDE STEP WELL
- WHEEL CHOCKS AND MOUNTING BRACKETS TO BE PROVIDED BY CUSTOMER
- BATTERY CHARGER LOCATED BEHIND DRIVER'S SEAT

				Pierce MANUFACTURING INC.		JOB NO.	41292
						SCALE	1:24
						DATE	
				TITLE		1500 GPM, 1500G TANK, 1480G WATER, 20G FOAM 184" TANKER, HARDWIRED	
				FOR		BERLIN FIRE DEPARTMENT BERLIN, MASSACHUSETTS	
				DRAWN BY		JDA	
				CHECKED BY		SZE	
				SHEET SIZE		SHEET NO.	
				NO.		41292AD	
				D		1 OF 1	

REV	DATE	BY	CH	SABER FR
200CT25		TYB	CSS	
14AUG25		VHO	CCS	
21MAY25		BTH	SZE	

CHASSIS DATA	MAKE	PIERCE
MODEL		