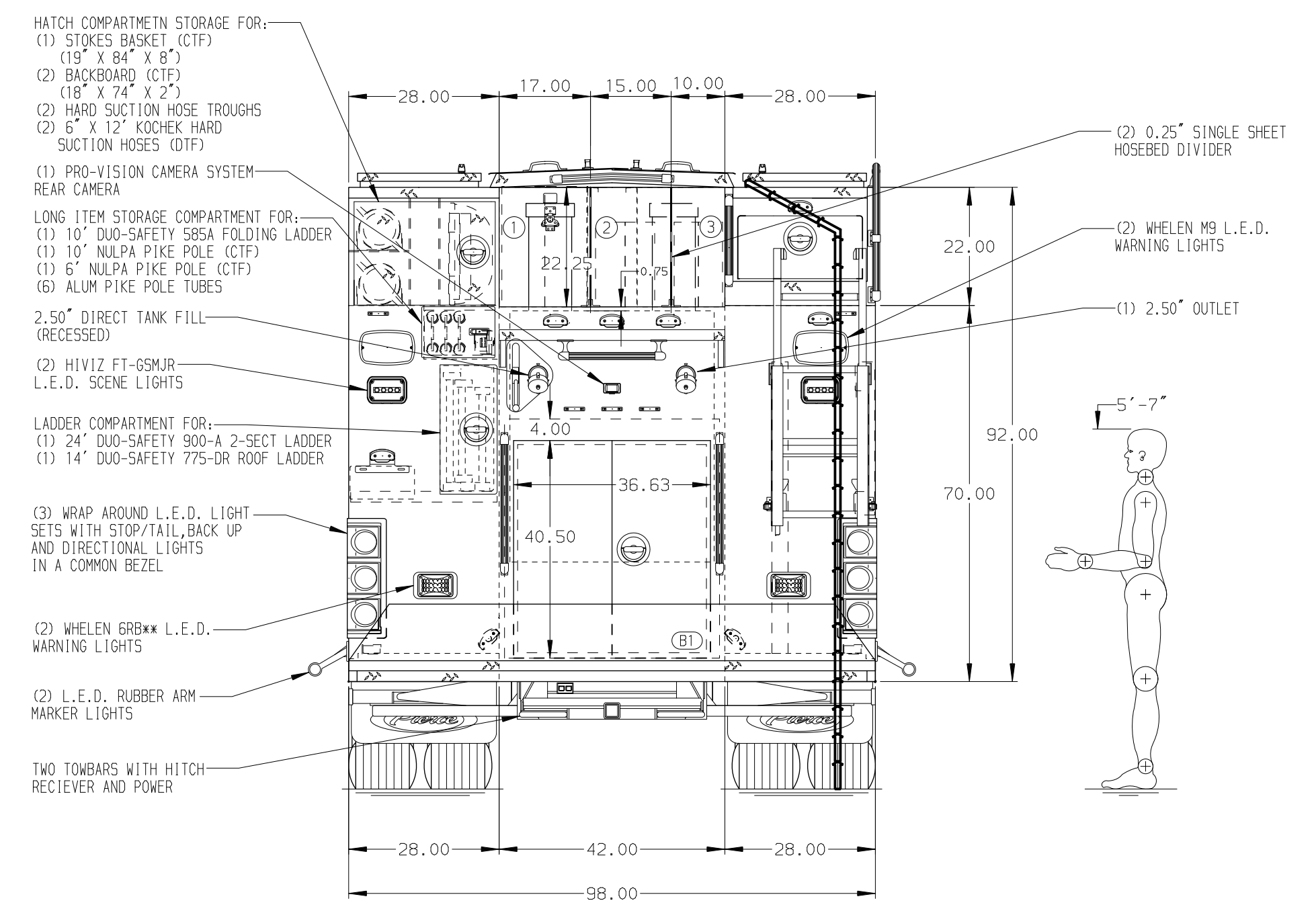
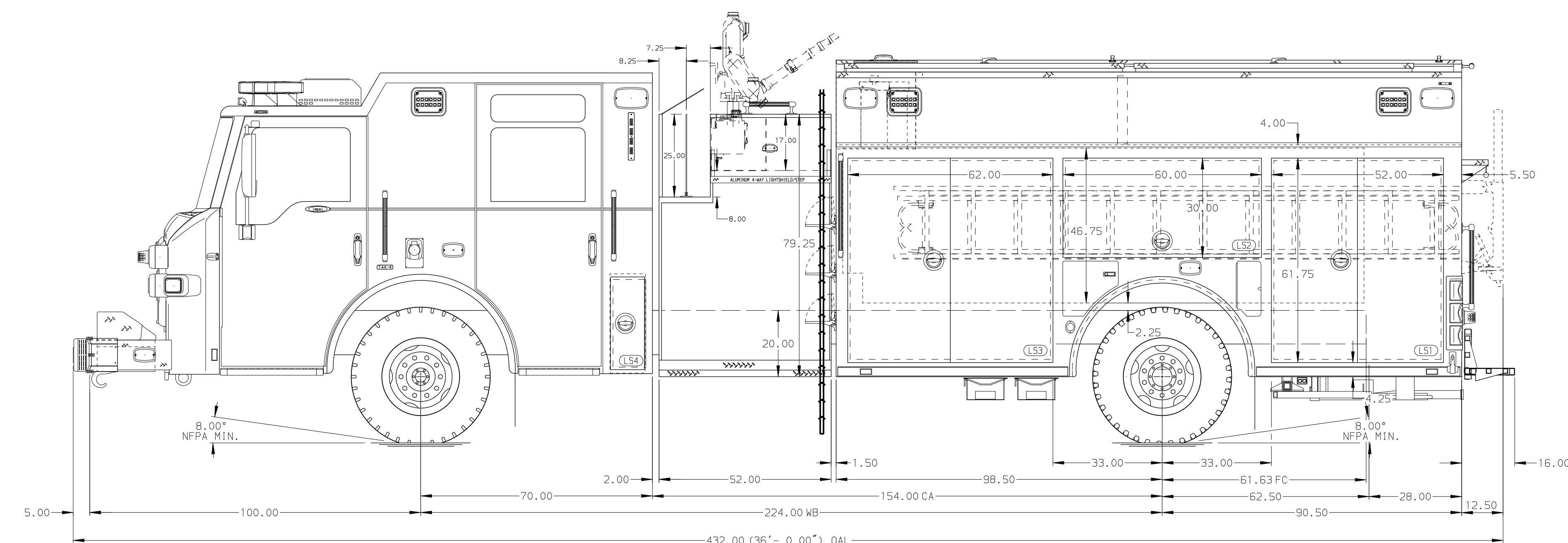


<b>BODY</b> Pumper, HDRP, Aluminum	<b>TOTAL TANK CAPACITY</b> 1030 Gal/Lon Poly Tank
<b>COMPT, LEFT SIDE</b> 189" RollUp Full Height & Depth Front & Rear	<b>WATER CAPACITY</b> 1000 Gal/Lons of Water
<b>COMPT, RIGHT SIDE</b> 189" RollUp Full Height & Depth Front & Rear	<b>FOAM CELL CAPACITY</b> 30 Gal/Lon Foam Cell
<b>COMPT, REAR</b> 40.50" FF Lap Rear Compt w/Tailboard	<b>FOAM SYSTEM</b> Husky 12 Single Agent Foam System

- HOSEBED CAPACITIES**
- ① 750' OF 5.00" D.J. HOSE
  - ② 500' OF 3.00" D.J. HOSE
  - ③ 500' OF 2.50" D.J. HOSE



<b>CHASSIS</b> Impel Chassis <b>ENGINE</b> 450 HP Cummins L9 Engine	<b>CAB</b> 7010 Impel Cab <b>BUMPER</b> 22" Extended Stainless Steel	<b>AXLE, FRONT, CUSTOM</b> 22,800 Lb TAK-4 Axle <b>AXLE, REAR</b> 31,000 Lb Meritor Axle	<b>TRANSMISSION</b> Allison 6th Gen, 3000 EV5 P	<b>PUMPHOUSE</b> 52" Control Zone Side Mount <b>PUMP</b> 1500 GPM Waterous CSU	<b>SPEEDLAYS, 1.50"</b> Not Required SpeedLays <b>SPEEDLAYS, 2.50"</b> Not Required SpeedLays	<b>CROSSLAYS</b> (2) 1.50" Special Cap. <b>GENERATOR</b> Generator Not Required	<b>SAFETY</b> Side Roll and Frontal Impact Protection
--	---	---	--	---	--	--	---

**NOTE**  
DIMENSIONS SHOWN ARE APPROXIMATE AND ARE SUBJECT TO MINOR DEVIATIONS AS MAY OCCUR OR BE NECESSARY IN CONSTRUCTION. MINOR DETAILS NOT SHOWN.

- AIR INLET WITH DISCONNECT COUPLING LOCATED IN DRIVER STEP WELL
- 30A SHORELINE RECEPTACLE WITH KUSMAUL SUPER AUTO-EJECT
- BATTERY CHARGER LOCATED PER ORDER
- BATTERY CHARGE INDICATOR LOCATED ON DRIVER'S SEAT RISER
- XANTREX INVERTER LOCATED PER ORDER
- EIGHT HORIZ FT-CU-HD-12 LIGHTS IN THE HOSEBED

**Pierce MANUFACTURING INC.**

JOB NO. 41522-01-02  
SCALE 1:24  
DATE

TITLE Pierce Pumper Approval Drawing  
FOR Boles Fire Protection District  
DRAWN BY SJM 29JUL25  
CHECKED BY MMF 31JUL25  
SHEET SIZE D SHEET NO. 1 OF 2

DWG NO. 41522AD-SH1

03APR26	LST	MCJ	CHASSIS DATA
30OCT25	LST	MCJ	MAKE
02OCT25	LST	SJS	PIERCE
25SEP25	LST	SJS	MODEL
REV	DATE	BY	CH