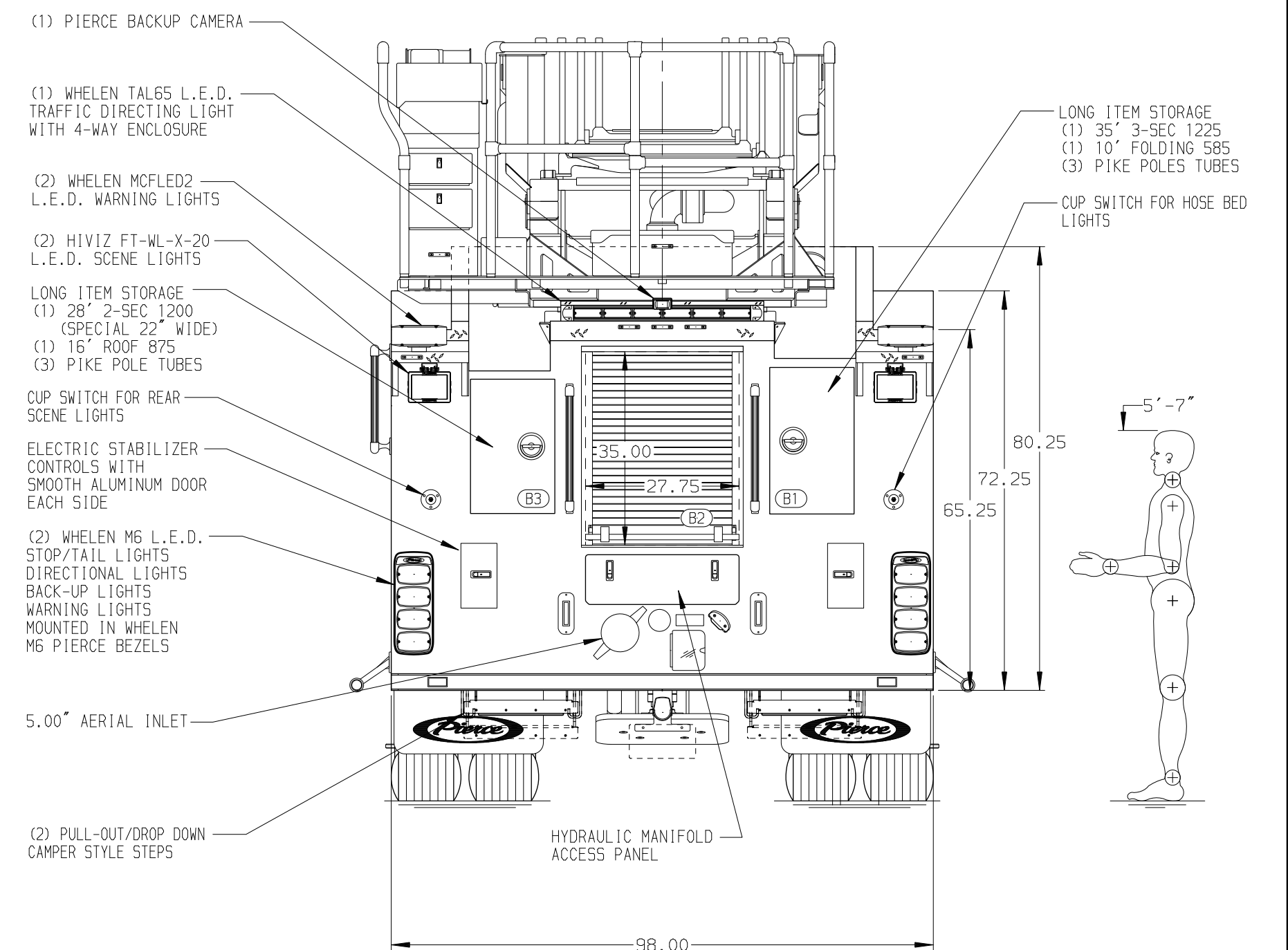
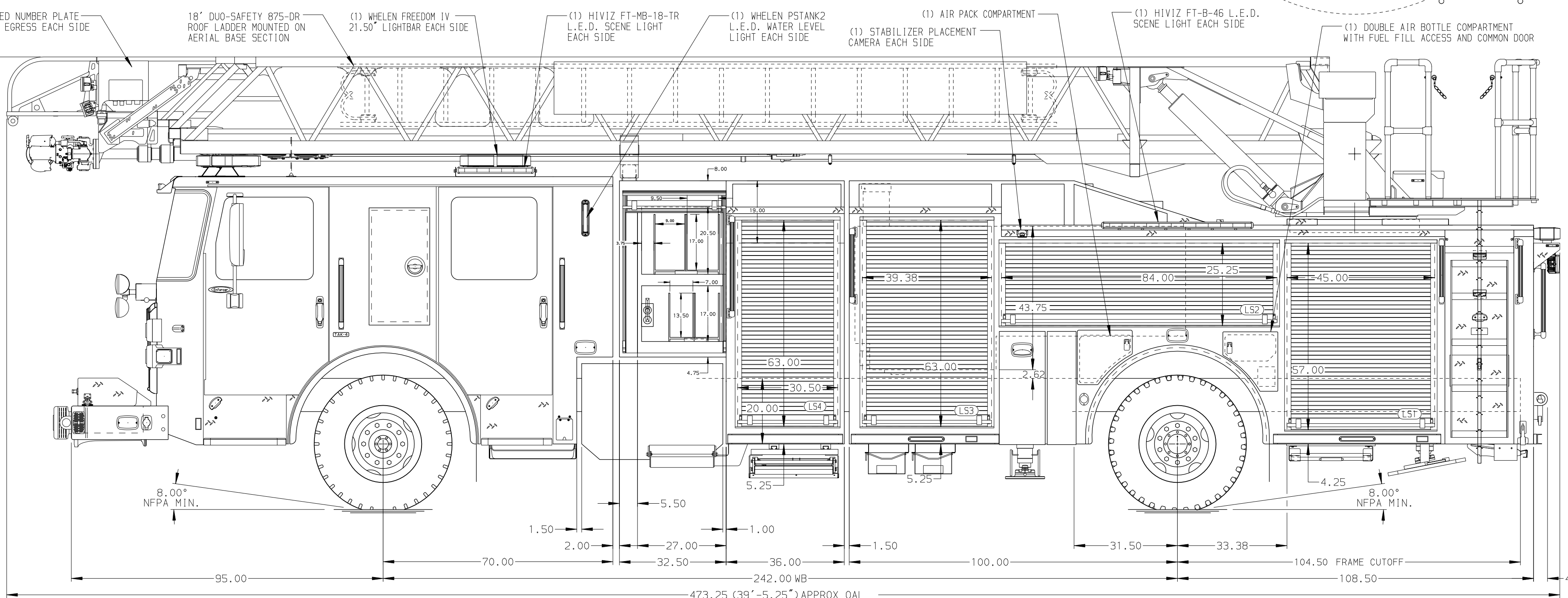


BODY 107' ASL Aluminum Body PUC	TOTAL TANK CAPACITY 500 Gallon Poly Tank
COMPT, LEFT SIDE FRONT Full Height RollUp Forward	WATER CAPACITY 500 Gallons of Water
COMPT, LEFT SIDE REAR Full Height RollUp Rearward	FOAM CELL CAPACITY Foam Cell Not Required
COMPT, RIGHT SIDE FRONT Full Height RollUp Forward	FOAM SYSTEM Foam System Not Required
COMPT, RIGHT SIDE REAR Full Height Large Compt RollUp Rearward	



CHASSIS Enforcer Chassis, PUC 510 HP Paccar MX13 Engine	CAB 7000 Enforcer Cab, PUC 26" Underslung Painted Steel	ELECTRICAL SYSTEM Hard Wired TRANSMISSION Allison 6th Gen, 4000 EV5 P	AXLE, FRONT, CUSTOM 24,000 Lb TAK-4 Axle AXLE, REAR 33,500 Lb Meritor Axle	PUMPHOUSE Control Zone, PAL/PAP PUC PUMP 2000 GPM Pierce PUC	CROSSLAYS, 1.50" (2) 1.75", Poly Trays, 200' CROSSLAYS, 2.50" (1) 2.50", Poly Tray, 200'	DEADLAYS (1) 2.50", Poly Tray, 250' GENERATOR Generator Not Required	SAFETY Frontal Impact Protection	Pierce MANUFACTURING INC.	JOB NO. 42110
NOTE DIMENSIONS SHOWN ARE APPROXIMATE AND ARE SUBJECT TO MINOR DEVIATIONS AS MAY OCCUR OR BE NECESSARY IN CONSTRUCTION. MINOR DETAILS NOT SHOWN.	1. NO LIMITED RETRACTION REQUIRED 2. ONSPOT AUTOMATIC TIRE CHAINS 3. SHORELINE RECEPTACLE WITH KUSSMALL SUPER AUTO-EJECT LOCATED ON DRIVER SIDE BUMPER EXTENSION 4. AIR INLET/OUTLET WITH DISCONNECT COUPLING IN THE DRIVER SIDE STEPNELL 5. BATTERY CHARGER LOCATED PER ORDER 6. BATTERY CHARGE INDICATOR LOCATED ON DRIVER SEAT RISER 7. TEN ADJUSTABLE SHELVES LOCATED IN COMPARTMENTS PER ORDER 8. ONE FLOOR MOUNTED SLIDE-OUT TRAY LOCATED IN COMPARTMENT PER ORDER 9. ONE SWING-OUT TOOLBOARD LOCATED IN COMPARTMENT PER ORDER 10. ONE CTECH FOUR-DRAWER CABINETS LOCATED IN COMPARTMENT PER ORDER	11. TWO TOOLBOARDS ADDED TO SLIDE-OUT TRAYS LOCATED PER ORDER 12. TWO VERTICAL PARTITIONS LOCATED IN COMPARTMENTS PER ORDER 13. ONE AIR BAG RACK LOCATED IN COMPARTMENT PER ORDER 14. TWO MOUNTING PLATES LOCATED IN COMPARTMENTS PER ORDER 15. ONE ADJUSTABLE SHELF PLATE W/1" RETAINING LIP LOCATED IN COMPARTMENT PER ORDER 16. 1500 GPM HIGH FLOW WATERWAY 17. LIFTING EYE ROPE RESCUE ATTACHMENT AT AERIAL TIP 18. TECTONIC 4-SECTION RING LIGHTING AT AERIAL DEVICE 19. DC POWER TO AERIAL TIP 20. 1500 GPM HIGH FLOW WATERWAY	21. LIFTING EYE ROPE RESCUE ATTACHMENT AT AERIAL TIP 22. ONE 1.50" OUTLET WITH 2.00" PIPING AND SWIVEL LOCATED IN CENTER BUMPER TRAY	CHASSIS DATA MAKE PIERCE MODEL ENFORCER	TITLE 107' ASCENDANT AERIAL LADDER AND BODY ASSEMBLY DRAWN BY ANZ CHECKED BY JLO SHEET SIZE D	DATE 09MAY25 23MAY25 SHEET NO. 1 OF 1	SCALE 1:24	DATE 09MAY25	DATE 05AUG25

42110AD