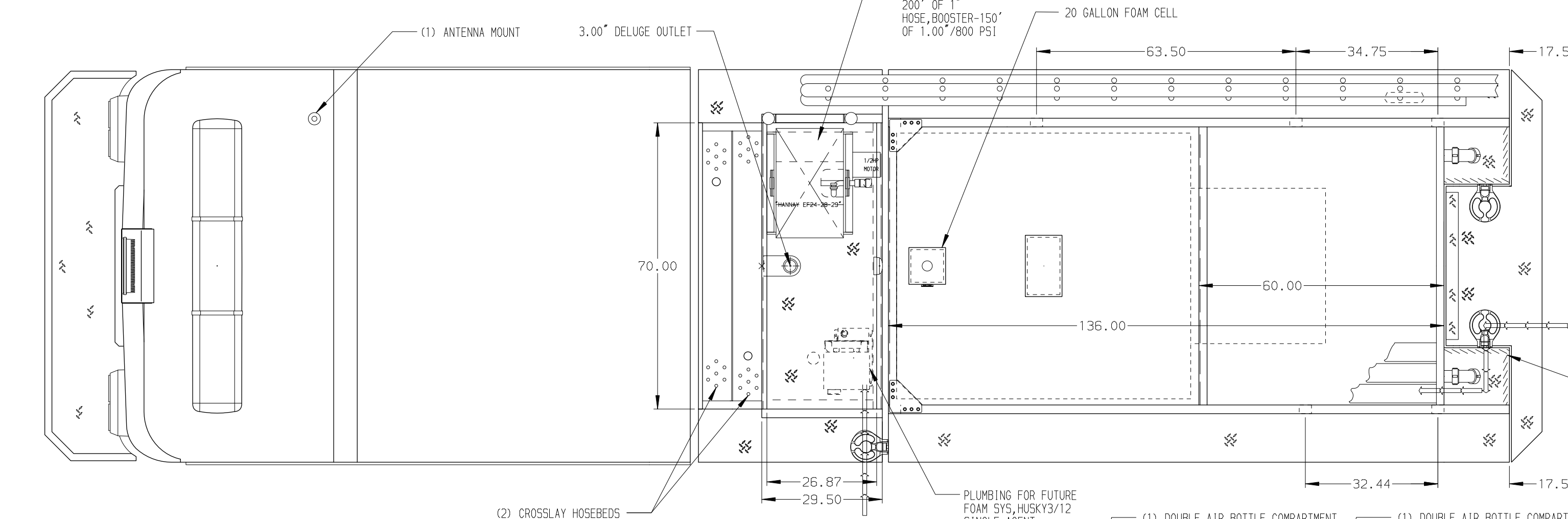
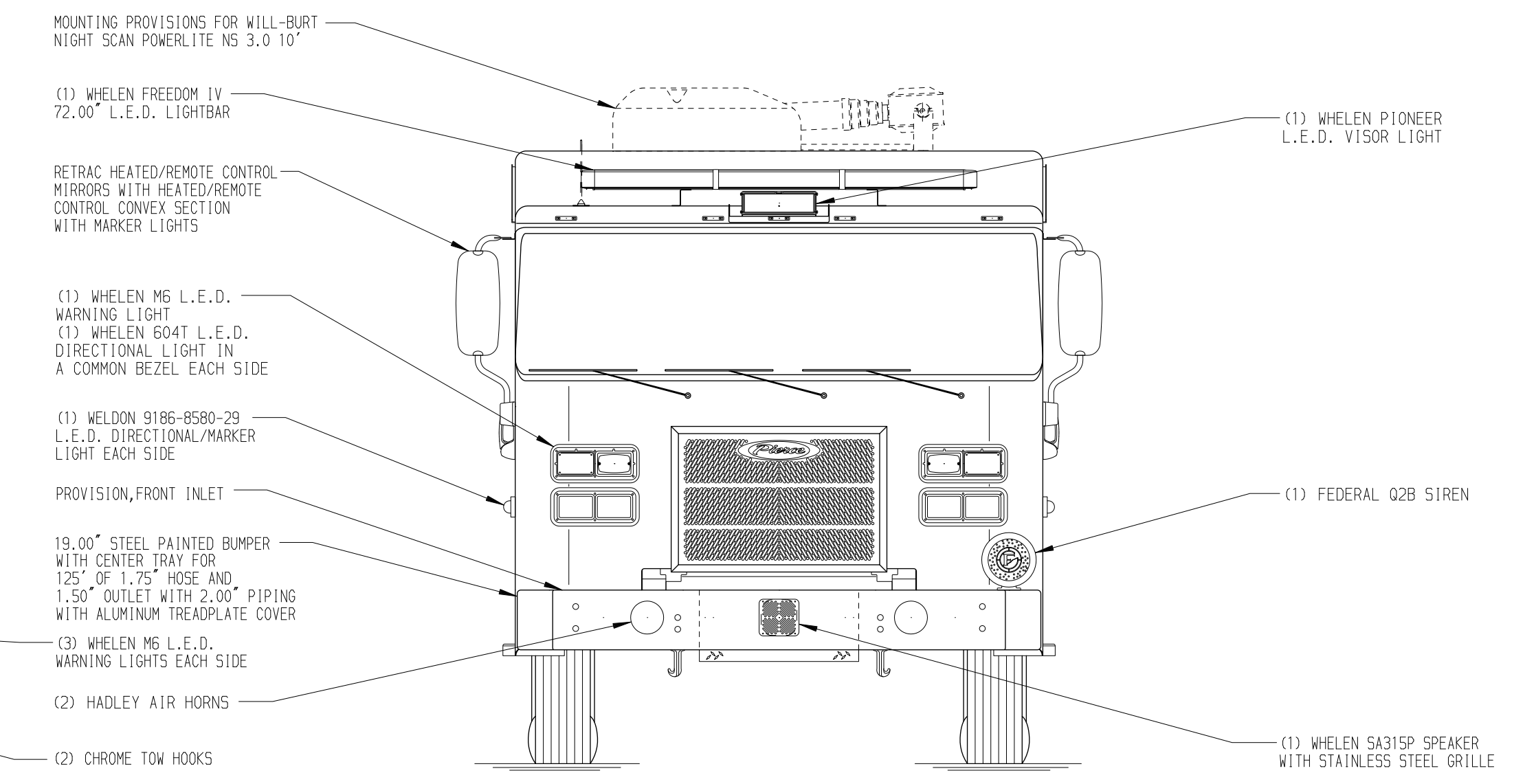
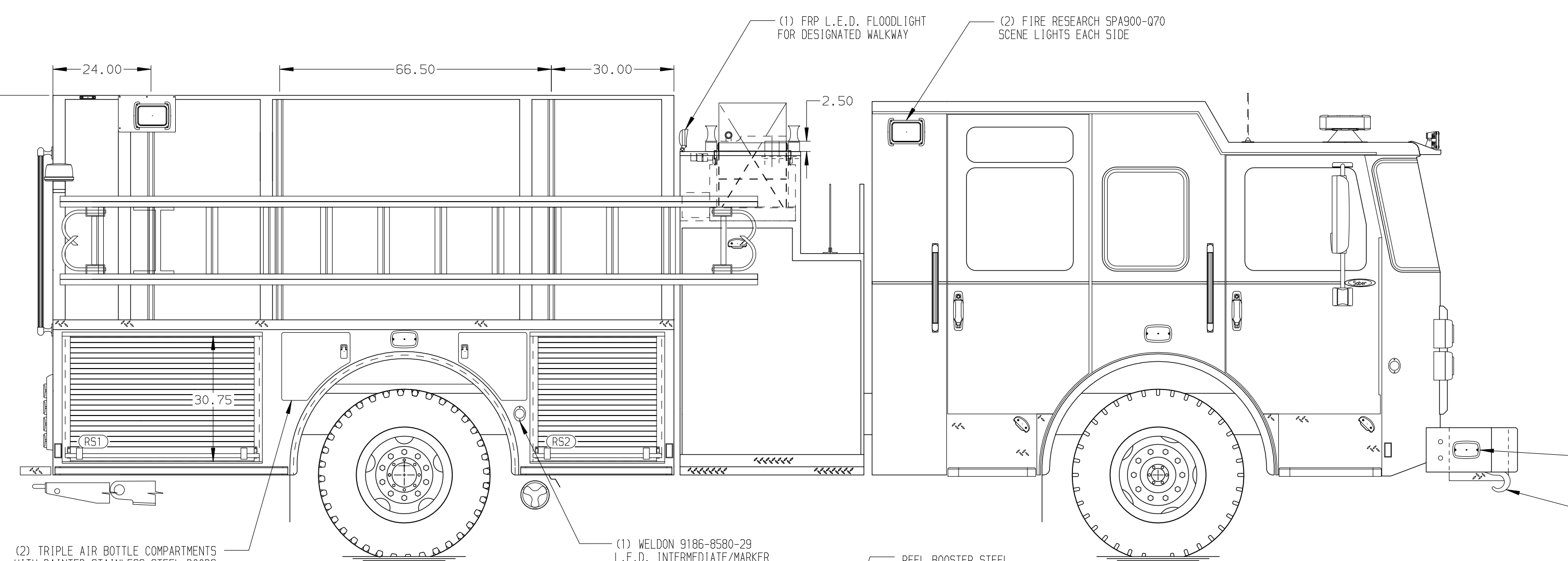
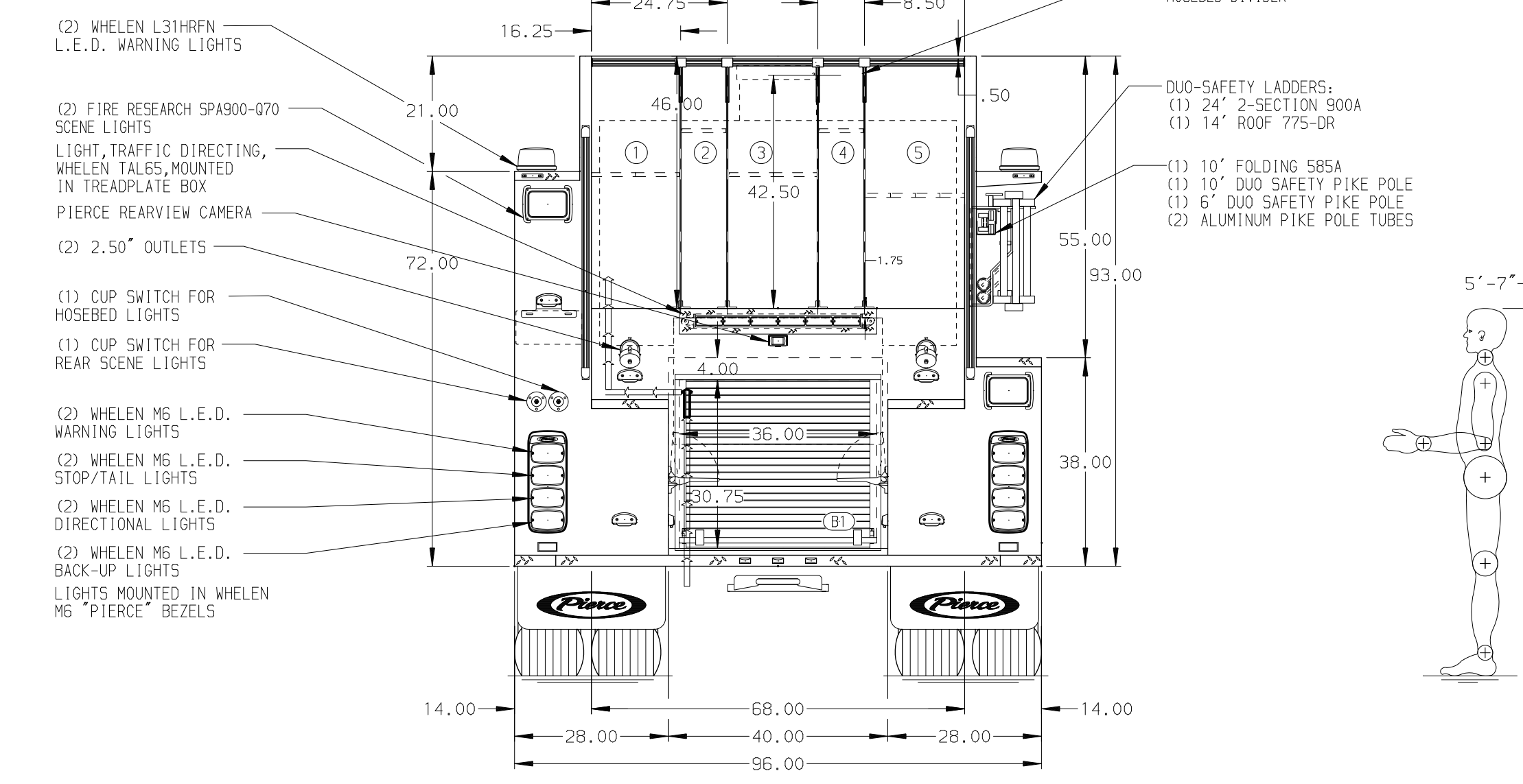
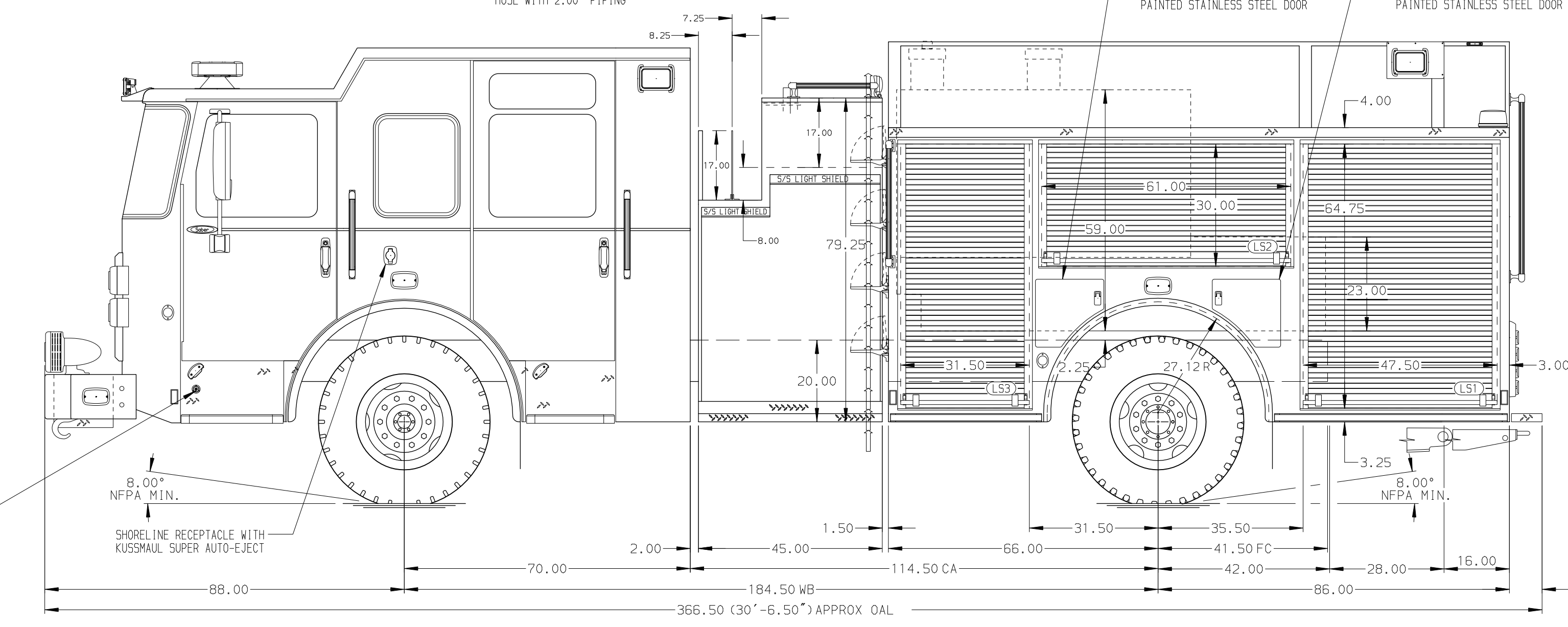


HEIGHT WILL BE CONFIRMED  
WHEN A WEIGHT REVIEW HAS  
BEEN COMPLETED  
116.00  
(9'-8")  
APPROX  
O.A.H.



- HOSEBED CAPACITIES
- ① 300' OF 5.00" D.J. POLY HOSE
  - ② 200' OF 5.00" D.J. POLY HOSE
  - ③ 300' OF 5.00" D.J. POLY HOSE
  - ④ 200' OF 5.00" D.J. POLY HOSE
  - ⑤ 500' OF 2.50" D.J. POLY HOSE



ALUMINUM BODY

NOTE  
DIMENSIONS SHOWN ARE APPROXIMATE  
AND ARE SUBJECT TO MINOR DEVIATIONS  
AS MAY OCCUR OR BE NECESSARY IN  
CONSTRUCTION.  
MINOR DETAILS NOT SHOWN.

- 1. BATTERY CHARGER LOCATED IN COMPARTMENT PER SHOP ORDER
- 2. BATTERY CHARGER INDICATOR LOCATED ON DRIVER'S SEAT RISER
- 3. DUAL L.E.D. LIGHT STRIPS LOCATED IN HOSE BED
- 4. FIVE FULL WIDTH/DEPTH ADJUSTABLE SHELVES IN COMPARTMENTS PER SHOP ORDER
- 5. FOUR FLOOR MOUNTED SLIDE-OUT TRAYS IN COMPARTMENTS PER SHOP ORDER

REV	DATE	BY	CH	SABER FR
21OCT25	RHU	CGA		
15JUL25	RHU	JAP		
09APR25	ADP	JAP		

		JOB NO.	43914
		SCALE	DATE
TITLE	1500-D-1000P, 980G WATER, 20G FOAM, 152" PUMPER BODY (2) CROSSLAYS, LADDER BRACKETS RS, LOW RS/FH LS	DRAWN BY	RHU
FOR	NORTHWEST HARNETT FUQUAY VARINA, NORTH CAROLINA	CHECKED BY	JAP
DWG NO.	43914AD	SHEET SIZE	D
		SHEET NO.	1 OF 1