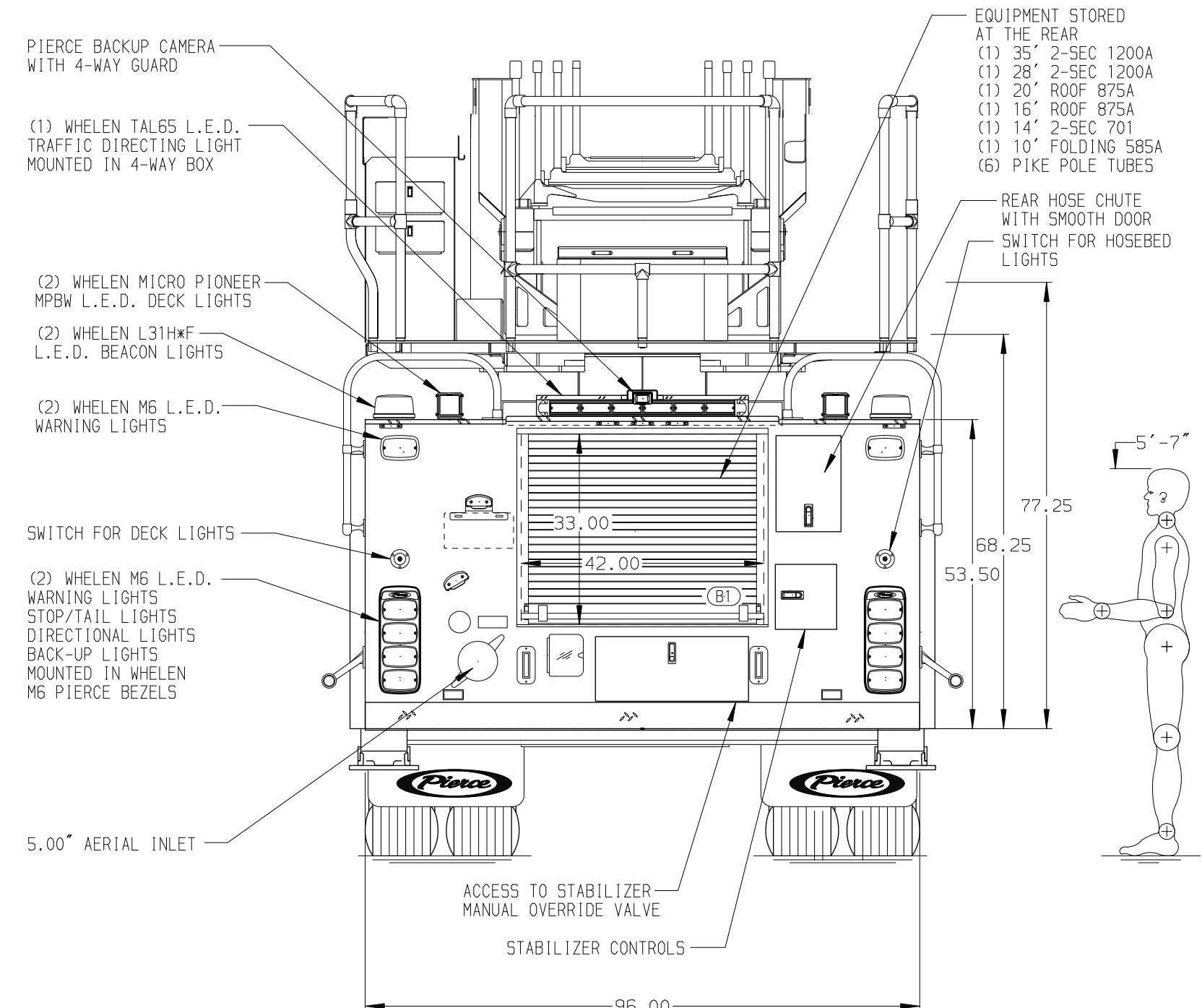
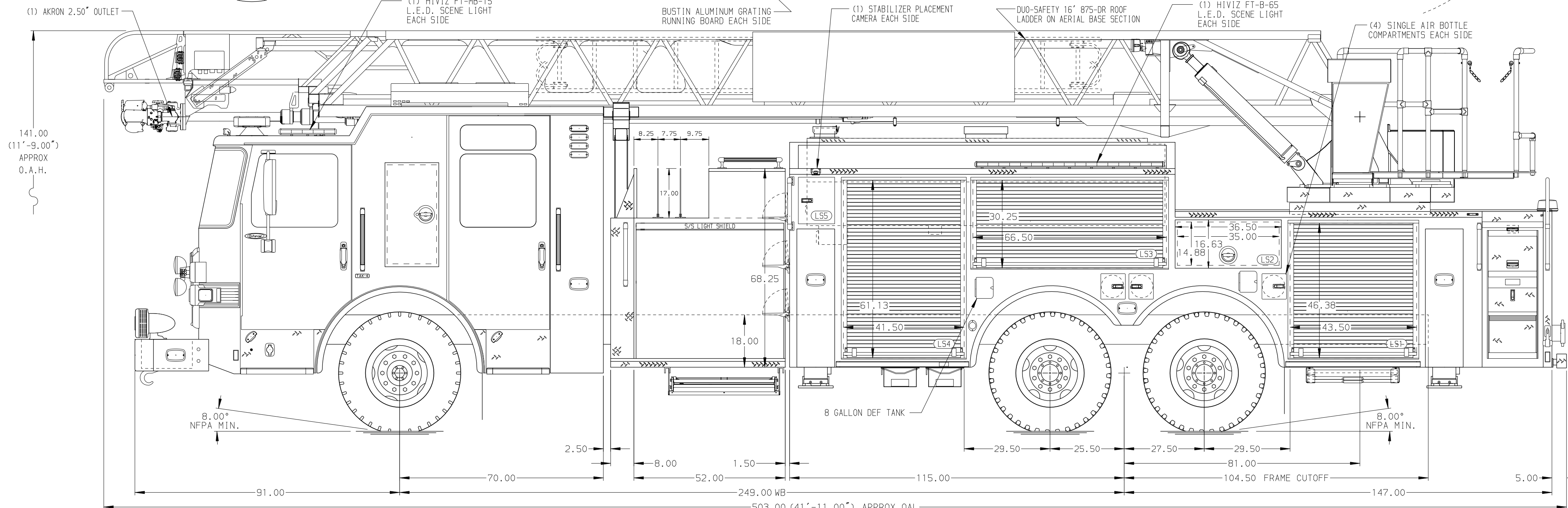


<p>BODY</p> <p>107' Tandem Axle Platform Aluminum Body</p> <p>COMPT, DRIVER SIDE FRONT</p> <p>FH/FD RollUp w/o Chute</p> <p>COMPT, DRIVER SIDE REAR</p> <p>FH/FD RollUp and Lift-up rearward</p> <p>COMPT, PASSENGER SIDE FRONT</p> <p>Full Height RollUp Forward</p> <p>COMPT, PASSENGER SIDE REAR</p> <p>Full Height RollUp and Liftup Rearward</p>	<p>WATER TANK</p> <p>500 Gallon Notched Poly Water Tank</p> <p>Foam System</p> <p>Plumbing For Future Foam System</p> <p>Foam Cell</p> <p>20 Gallon Foam Cell, Non-Reduced Water</p>
--	---



<p>CHASSIS</p> <p>Enforcer Chassis</p> <p>ENGINE</p> <p>605 HP Cummins X15 Engine</p>	<p>CAB</p> <p>7010 Enforcer Cab</p> <p>BUMPER</p> <p>22" Extended Pointed Steel</p>	<p>AXLE, FRONT, CUSTOM</p> <p>22,800 Lb TAK-4 Axle</p> <p>AXLE, REAR</p> <p>44,000 Lb Meritor Axle</p>	<p>TRANSMISSION</p> <p>Allison 6th Gen, 4000 EV5 P</p>	<p>PUMPHOUSE</p> <p>52" Control Zone Side Mount PUMP</p> <p>2000 GPM Waterous CSU</p>	<p>CROSSLAYS, 1.50"</p> <p>(2) 1.75" Standard Capacity</p> <p>CROSSLAYS, 2.50"</p> <p>(1) 2.50" Standard Capacity</p>	<p>SPEEDLAYS</p> <p>Speedlays Not Required</p> <p>GENERATOR</p> <p>Generator Not Required</p>	<p>SAFETY</p> <p>Side Roll and Frontal Impact Protection</p>	<p>CUSTOMER APPROVAL</p> <p>APPROVED BY: _____</p> <p>DATE: _____</p>	<p>Pierce MANUFACTURING INC.</p>	<p>JOB NO. 43974</p> <p>SCALE 1:24</p> <p>DATE</p>	
<p>NOTE</p> <p>DIMENSIONS SHOWN ARE APPROXIMATE AND ARE SUBJECT TO MINOR DEVIATIONS AS MAY OCCUR OR BE NECESSARY IN CONSTRUCTION. MINOR DETAILS NOT SHOWN.</p>										<p>TITLE 107' ASCENDANT AERIAL LADDER AND BODY ASSEMBLY</p> <p>FOR CHARLOTTE FIRE DEPART, CITY OF CHARLOTTE, NC</p> <p>DWG NO. 43974AD</p>	<p>DRAWN BY LWE</p> <p>CHECKED BY JLO</p> <p>SHEET SIZE D</p> <p>SHEET NO. 1 OF 1</p>
<p>1. 21.00" LIMITED RETRACTION REQUIRED</p> <p>2. ONE 1.50" OUTLET WITH 2.00" PIPING AND SWIVEL LOCATED IN CENTER BUMPER TRAY</p> <p>3. SHORELINE RECEPTACLE WITH KUSSMALL SUPER AUTO-EJECT LOCATED IN DRIVES STEPWELL</p> <p>4. AIR INLET WITH DISCONNECT COUPLING LOCATED IN DRIVER SIDE STEP WELL</p> <p>5. BATTERY CHARGER LOCATED PER ORDER</p> <p>6. BATTERY CHARGER INDICATOR LOCATED PER ORDER</p> <p>7. FIVE ADJUSTABLE SHELVES LOCATED IN COMPARTMENTS PER ORDER</p> <p>8. THREE FLOOR MOUNTED SLIDE-OUT TRAYS LOCATED IN COMPARTMENTS PER ORDER</p> <p>9. ONE SWING-OUT TOOLBOARD LOCATED IN COMPARTMENT PER ORDER</p> <p>10. ONE PEGBOARD MOUNTED ON COMPARTMENT BACK WALL LOCATED PER ORDER</p> <p>11. TECNO 4-SECTION RUNG LIGHTING AT AERIAL DEVICE</p> <p>12. TWO RECEPTACLES LOCATED PER ORDER</p> <p>13. 1500 GPM HIGH FLOW WATERWAY</p> <p>14. 3.00" RAISED AERIAL PEDESTAL</p> <p>15. ONE (3) DRAWER CTECH DRAWER INSERT PER ORDER</p> <p>16. DC POWER TO AERIAL TIP</p>											