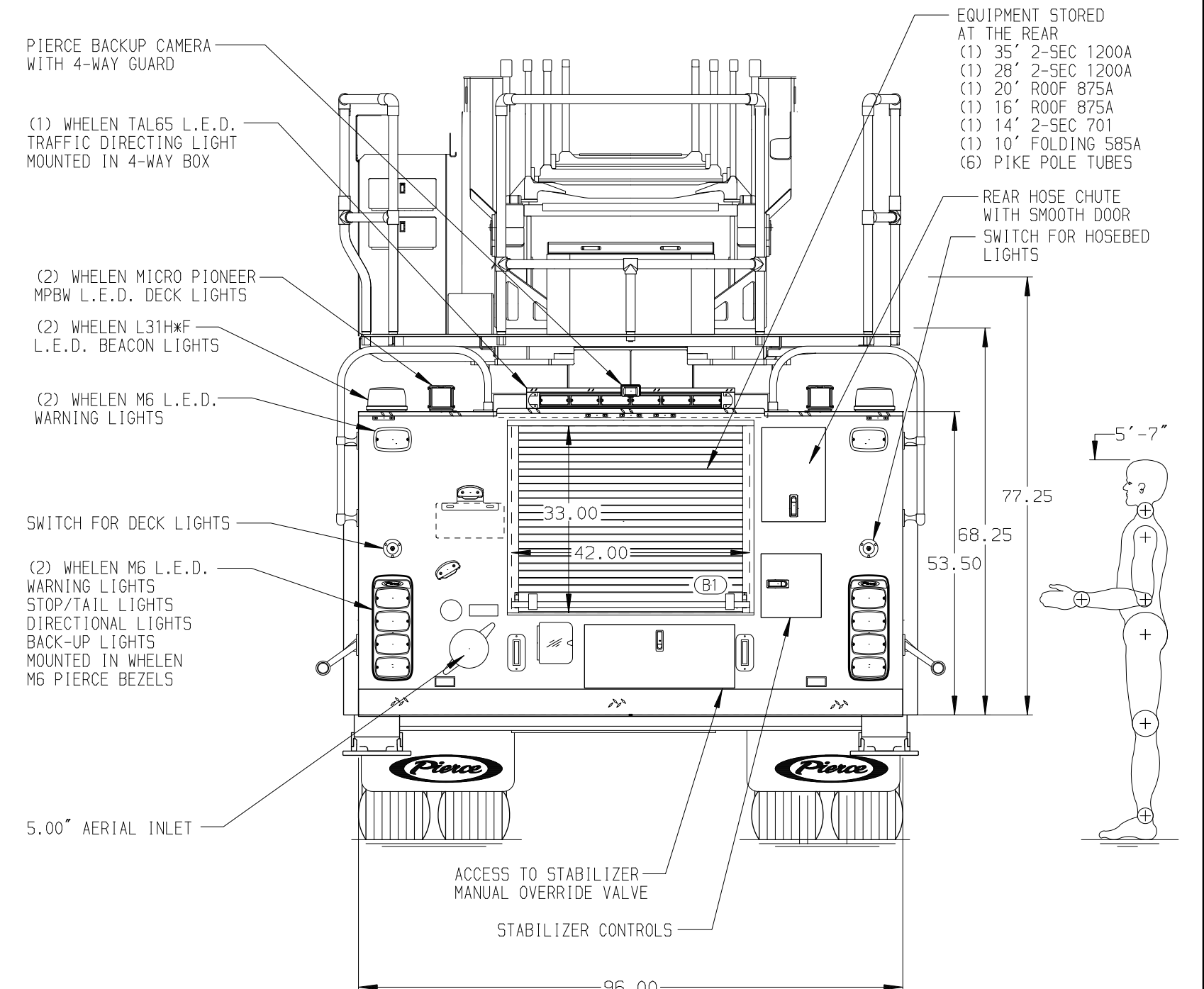
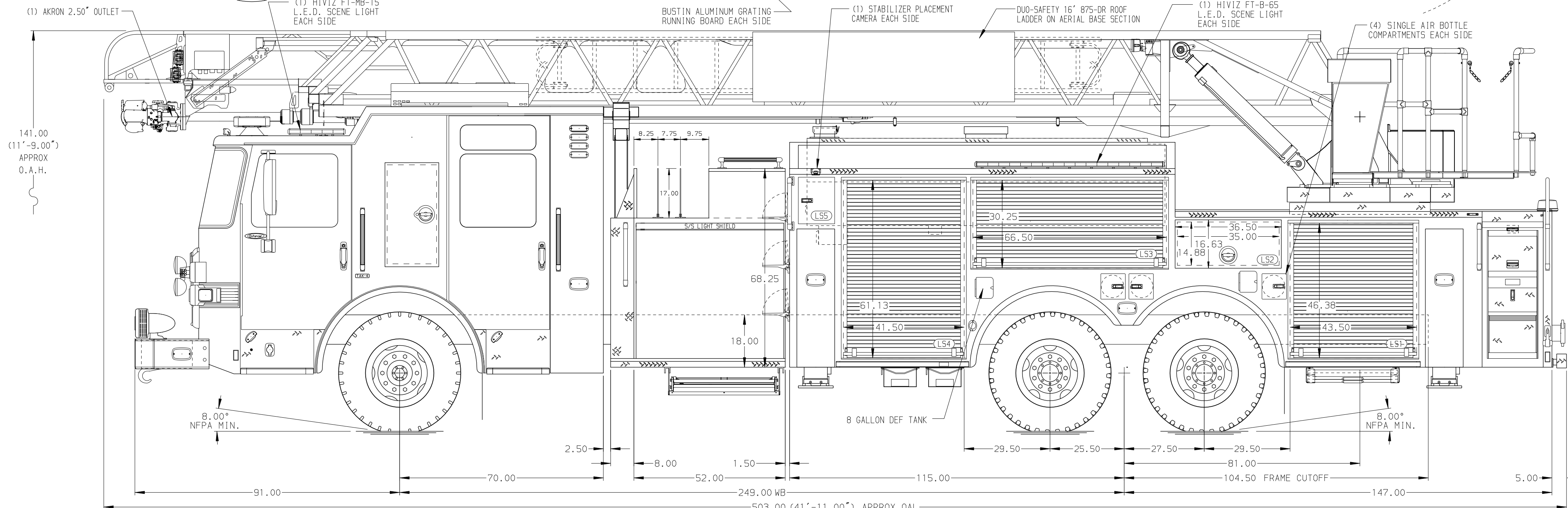


<b>BODY</b> 107' ASL Tandem Axle Aluminum Body	<b>TOTAL TANK CAPACITY</b> 500 Gallon Poly Tank
<b>COMPT, LEFT SIDE FRONT</b> FH/FD RollUp Forward w/o Chute	<b>WATER CAPACITY</b> 480 Gallons of Water
<b>COMPT, LEFT SIDE REAR</b> FH/FD RollUp and Lift-up Rearward	<b>FOAM CELL CAPACITY</b> 20 Gallon Foam Cell
<b>COMPT, RIGHT SIDE FRONT</b> Full Height RollUp Forward	<b>FOAM SYSTEM</b> Husky 3 Single Agent Foam System
<b>COMPT, RIGHT SIDE REAR</b> Full Height RollUp and Lift-up Rearward	



<b>CHASSIS</b> Enforcer Chassis <b>ENGINE</b> 605 HP Cummins X15 Engine	<b>CAB</b> 7010 Enforcer Cab <b>BUMPER</b> 22\"/>			
<b>AXLE, FRONT, CUSTOM</b> 22,800 Lb TAK-4 Axle <b>AXLE, REAR</b> 44,000 Lb Meritor Axle	<b>TRANSMISSION</b> Allison 6th Gen, 4000 EV5 P	<b>PUMPHOUSE</b> 52\"/>		
<b>CROSSLAYS, 1.50\"</b> (2) 1.75\"/>				
<b>SPEEDLAYS</b> Speedlays Not Required <b>GENERATOR</b> Generator Not Required	<b>SAFETY</b> Side Roll and Frontal Impact Protection	<b>CUSTOMER APPROVAL</b> APPROVED BY: _____ DATE: _____		JOB NO. 43975
<b>NOTE</b> DIMENSIONS SHOWN ARE APPROXIMATE AND ARE SUBJECT TO MINOR DEVIATIONS AS MAY OCCUR OR BE NECESSARY IN CONSTRUCTION. MINOR DETAILS NOT SHOWN.	<ol style="list-style-type: none"> <li>21.00\"/&gt; </li></ol>	<ol style="list-style-type: none"> <li>ONE TECH THREE-DRAWER CABINET LOCATED IN COMPARTMENT PER ORDER</li> <li>TWO RECEPTACLES LOCATED PER ORDER</li> <li>1500 GPM HIGH FLOW WATERWAY</li> <li>3.00\"/&gt; </li></ol>		<b>TITLE</b> 107' ASCENDANT AERIAL LADDER AND BODY ASSEMBLY <b>FOR</b> CHARLOTTE FIRE DEPART, CITY OF CHARLOTTE, NC <b>DWG NO.</b> 43975AD