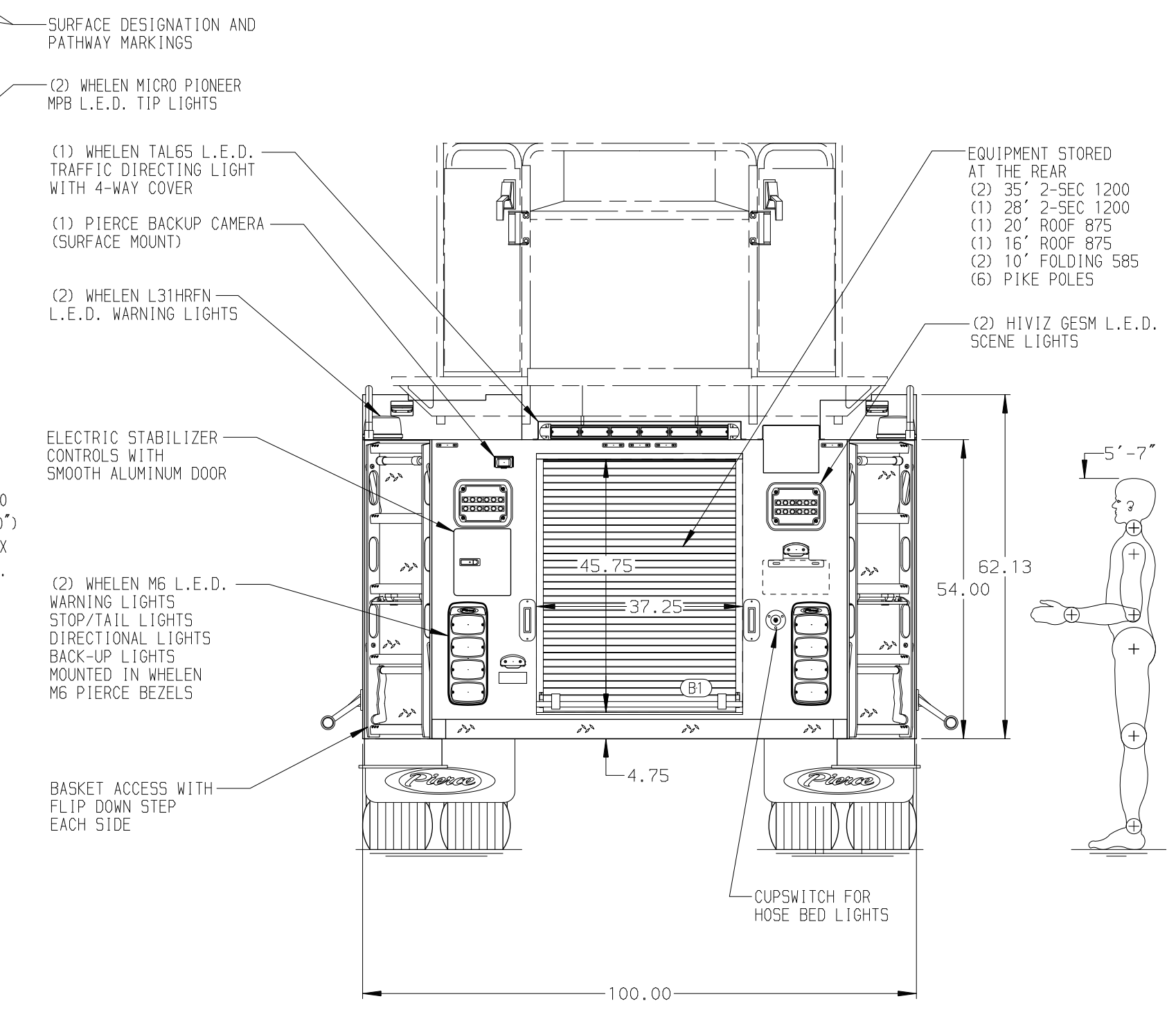
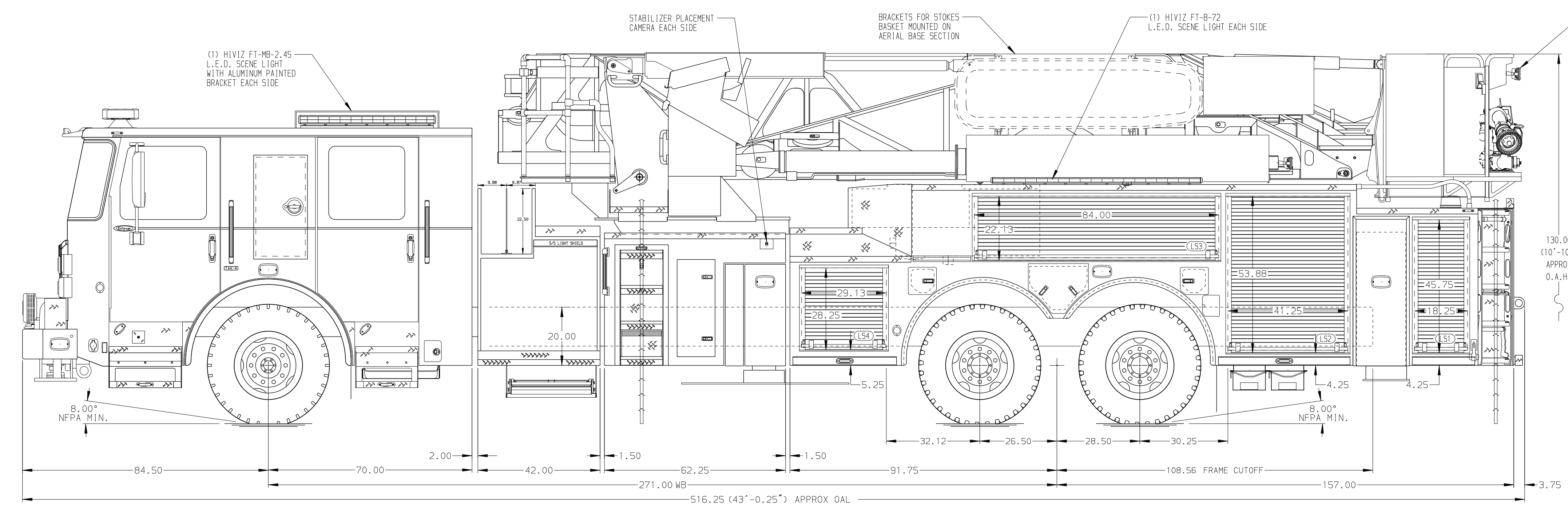


BODY 100' Ascendant Aerial Tower Alum Body	TOTAL TANK CAPACITY 300 Gallon Poly Tank
COMPT, LEFT SIDE Full Height & Full Depth RollUp Doors	WATER CAPACITY 300 Gallons of Water
COMPT, RIGHT SIDE Full Height RollUp Doors	FOAM CELL CAPACITY Foam Cell Not Required
	FOAM SYSTEM Foam System Not Required



CHASSIS Enforcer Chassis ENGINE 510 HP Paccar MX13 Engine	CAB 7000 Enforcer Cab BUMPER 15" Painted Steel	ELECTRICAL SYSTEM MUX TRANSMISSION ALLison 6th Gen, 4500 EVS P	AXLE, FRONT, CUSTOM 24,000 Lb TAK-4 Axle AXLE, REAR 54,000 Lb Meritor Axle	PUMPHOUSE 42" Control Zone Side Mount PUMP 2000 GPM Waterous ESU1	CROSSLAYS, 1.50" (2) 1.50" Standard Capacity CROSSLAYS, 2.50" 2.50" Crosslay Not Required	SPEEDLAYS Speedlays Not Required GENERATOR Generator Not Required	SAFETY Side Roll and Frontal Impact Protection
NOTE DIMENSIONS SHOWN ARE APPROXIMATE AND ARE SUBJECT TO MINOR DEVIATIONS AS MAY OCCUR OR BE NECESSARY IN CONSTRUCTION. MINOR DETAILS NOT SHOWN.							
1. SHORELINE RECEPTACLE WITH KUSSMAUL SUPER AUTO-EJECT LOCATED ON DRIVERS SIDE FRONT CAB CORNER		2. AIR INLET WITH DISCONNECT COUPLING RECESSED IN THE DRIVER SIDE STEPWELL		3. BATTERY CHARGER LOCATED PER ORDER		4. BATTERY CHARGE INDICATOR LOCATED ON DRIVER SEAT RISER	
5. TECNO RING LIGHTING AT AERIAL DEVICE		6. SIX ADJUSTABLE SHELVES LOCATED IN COMPARTMENTS PER ORDER		7. FOUR FLOOR MOUNTED SLIDE-OUT TRAYS LOCATED IN COMPARTMENTS PER ORDER		8. TECNO S-SECTION RING LIGHTING AT AERIAL DEVICE	
9. DC POWER TO AERIAL TIP		10. 3-in-1 LYFECOMBO BRACKETS AT AERIAL BASKET		11. TWO WHELEN PSL188 L.E.D. LIGHTS UNDER BASKET CORNER STEPS			

		JOB NO.	44267
		SCALE	DATE
TITLE	100' ASCENDANT AERIAL TOWER AND BODY ASSEMBLY	DRAWN BY	ZMI
FOR	CITY OF ROSWELL ROSWELL, NM	CHECKED BY	JLO
DWG NO.	44267AD	SHEET SIZE	SHEET NO.
		D	1 OF 1