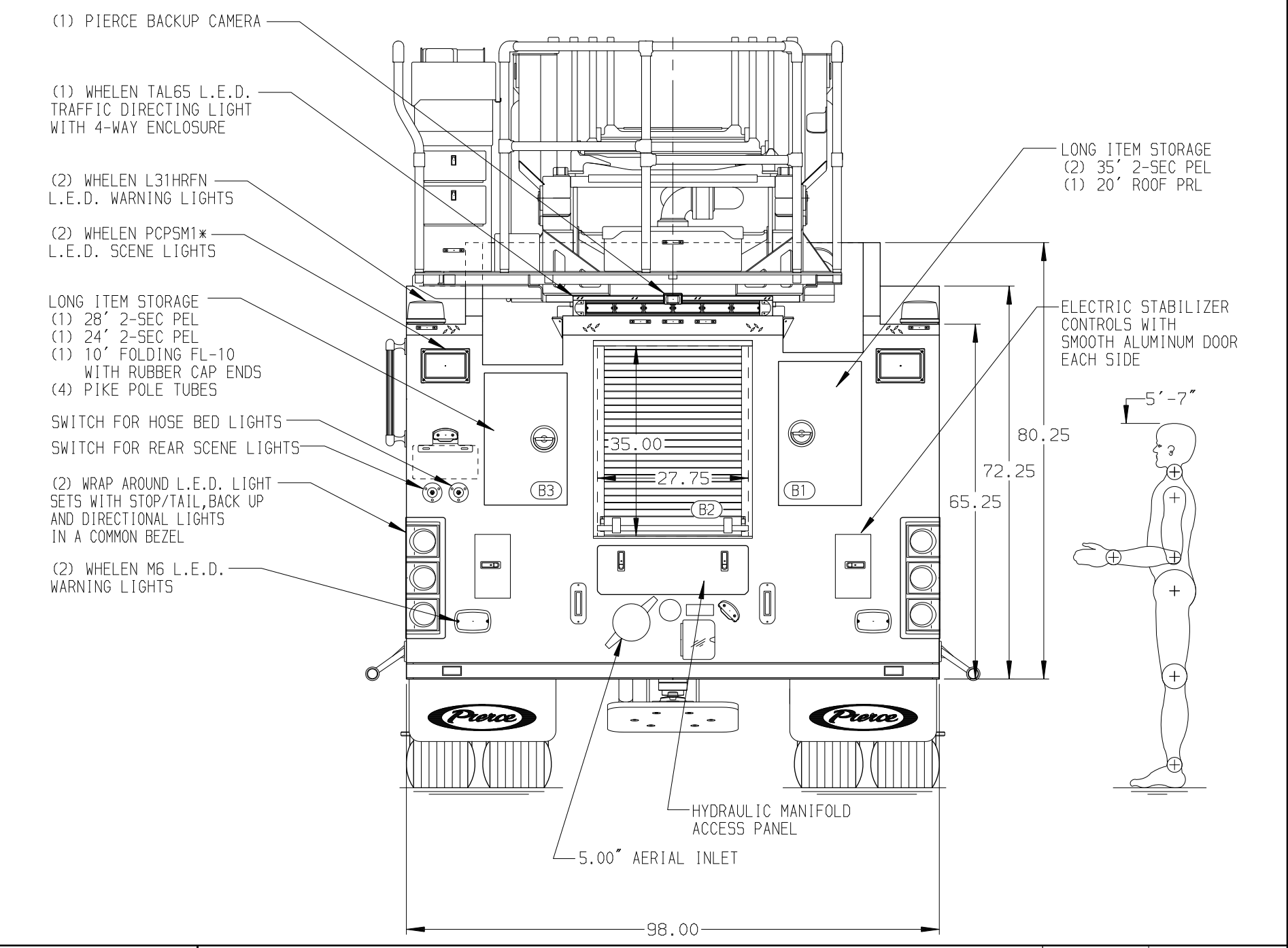
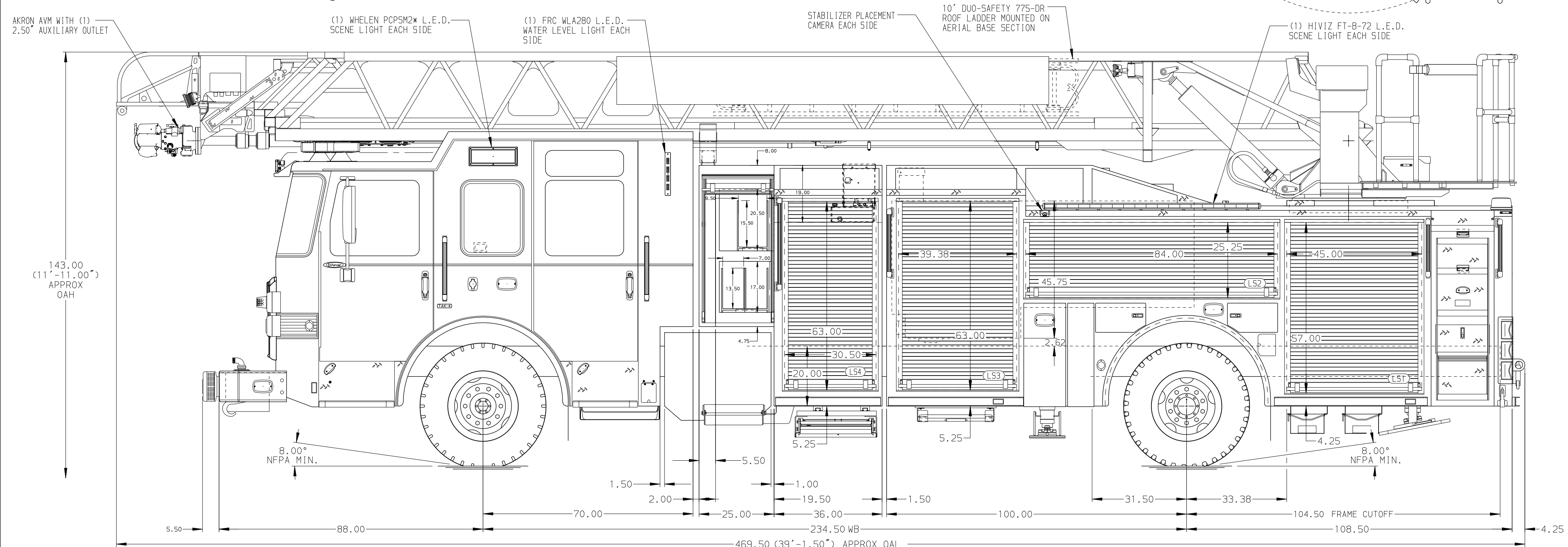
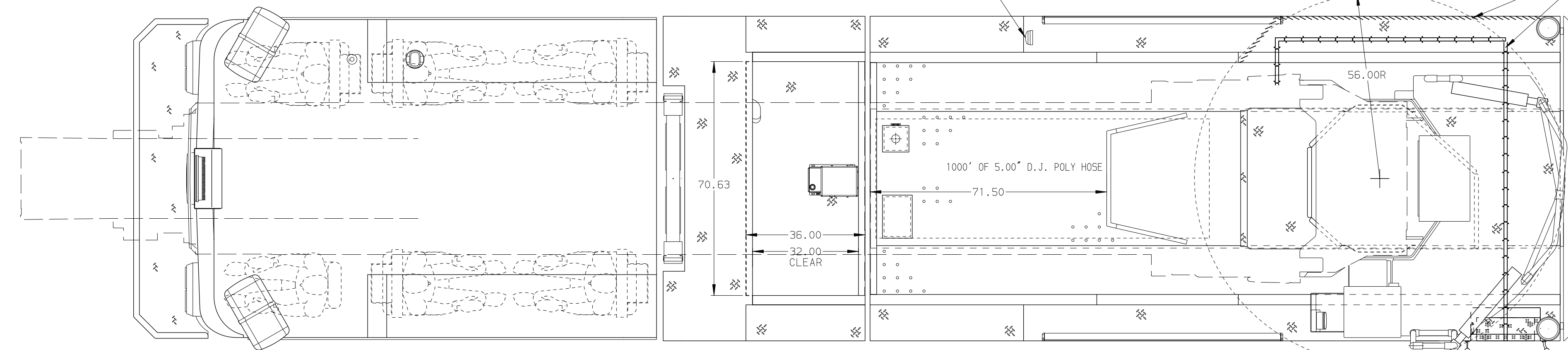


BODY 107' ASL Aluminum Body PUC	TOTAL TANK CAPACITY 520 Gallon Poly Tank
COMPT, LEFT SIDE FRONT Full Height RollUp Forward	WATER CAPACITY 500 Gallons of Water
COMPT, LEFT SIDE REAR Full Height RollUp Rearward	FOAM CELL CAPACITY 20 Gallon Foam Cell
COMPT, RIGHT SIDE FRONT Full Height RollUp Forward	FOAM SYSTEM Husky 3 Single Agent Foam System
COMPT, RIGHT SIDE REAR Full Height Large Compt RollUp Rearward	



CHASSIS Enforcer Chassis, PUC 510 HP Paccar MX13 Engine	CAB 7010 Notched Enforcer Cab, PUC 19\"/>		
ELECTRICAL SYSTEM MUX TRANSMISSION ALLison 6th Gen, 4000 EV5 P	AXLE, FRONT, CUSTOM 24,000 Lb TAK-4 Axle AXLE, REAR 33,500 Lb Meritor Axle	PUMPHOUSE Control Zone, PAL/PAP PUC PUMP 2000 GPM Pierce PUC	CROSSLAYS, 1.50\"/>
GENERATOR Generator Not Required	SAFETY Side Roll and Frontal Impact Protection	CUSTOMER APPROVAL APPROVED BY: _____ DATE: _____	MANUFACTURING INC.
NOTE DIMENSIONS SHOWN ARE APPROXIMATE AND ARE SUBJECT TO MINOR DEVIATIONS AS MAY OCCUR OR BE NECESSARY IN CONSTRUCTION. MINOR DETAILS NOT SHOWN.	1. NO LIMITED RETRACTION REQUIRED 2. 1500 GPM HIGH FLOW WATERWAY 3. SHORELINE RECEPTACLE WITH KUSSMALL SUPER AUTO-EJECT LOCATED ON DRIVER SIDE OF THE CAB 4. AIR INLET WITH DISCONNECT COUPLING IN THE DRIVER SIDE STEPPWELL 5. BATTERY CHARGER LOCATED PER ORDER 6. BATTERY CHARGE INDICATOR DISPLAYED THROUGH WINDOW BEHIND DRIVER SEAT 7. EIGHT ADJUSTABLE SHELVES LOCATED IN COMPARTMENTS PER ORDER 8. FOUR FLOOR MOUNTED SLIDE-OUT TRAYS LOCATED IN COMPARTMENTS PER ORDER 9. TECNIO 4-SECTION RUNG LIGHTING AT AERIAL DEVICE 10. LIFTING EYE ROPE RESCUE ATTACHMENT AT AERIAL TIP	FOR DANBURY FIRE DEPARTMENT DANBURY, CT	JOB NO. 44311 SCALE 1:24 DATE DRAWN BY ANZ 10JUL25 CHECKED BY JLO 29JUL25 SHEET SIZE D SHEET NO. 1 OF 1
		REV DATE BY CH ENFORCER	DWG NO. 44311AD