

PUMPER BODY
Long Aluminum 2nd Gen Pumper

CHASSIS
Sober FR Chassis

CHASSIS AXLE, FRONT, CUSTOM
19,500 Lb Oshkosh Tak-4 Axle

AXLE, REAR
27,000 Lb Dana Axle

ENGINE
PACCAR MX13, 510HP, 1850LB-FW/OBD, EPA, 2024

TRANSMISSION
Allison 6th Gen, 4000 EVS P, W/PROGNOSTICS TRANSMISSION, SHIFTER, 6-SPD, PUSH BUTTON

BUMPER
19" Extended Steel Pointed

CAB
7010 Sober FR Cab

BODY WATER TANK
1000 Gallon New York Style Water Tank

COMPT, PUMPER, REAR
23.50" FF RollUp Rear Compt

COMPT, PUMPER, LEFT SIDE
171" RollUp Full Height & Depth, Front & Rear Cleaveland Notch 12"

COMPT, PUMPER, RIGHT SIDE
171" RollUp Full Height & Depth, Front & Rear Cleaveland Notch 12"

FIRE SUPPRESSION PUMPHOUSE
45" Control Zone Side Mount

PUMP
2000 GPM Waterous CSU

CROSSLAYS, 1.50"
(2) 1.50" Standard Capacity

CROSSLAYS, 2.50"
Not Required

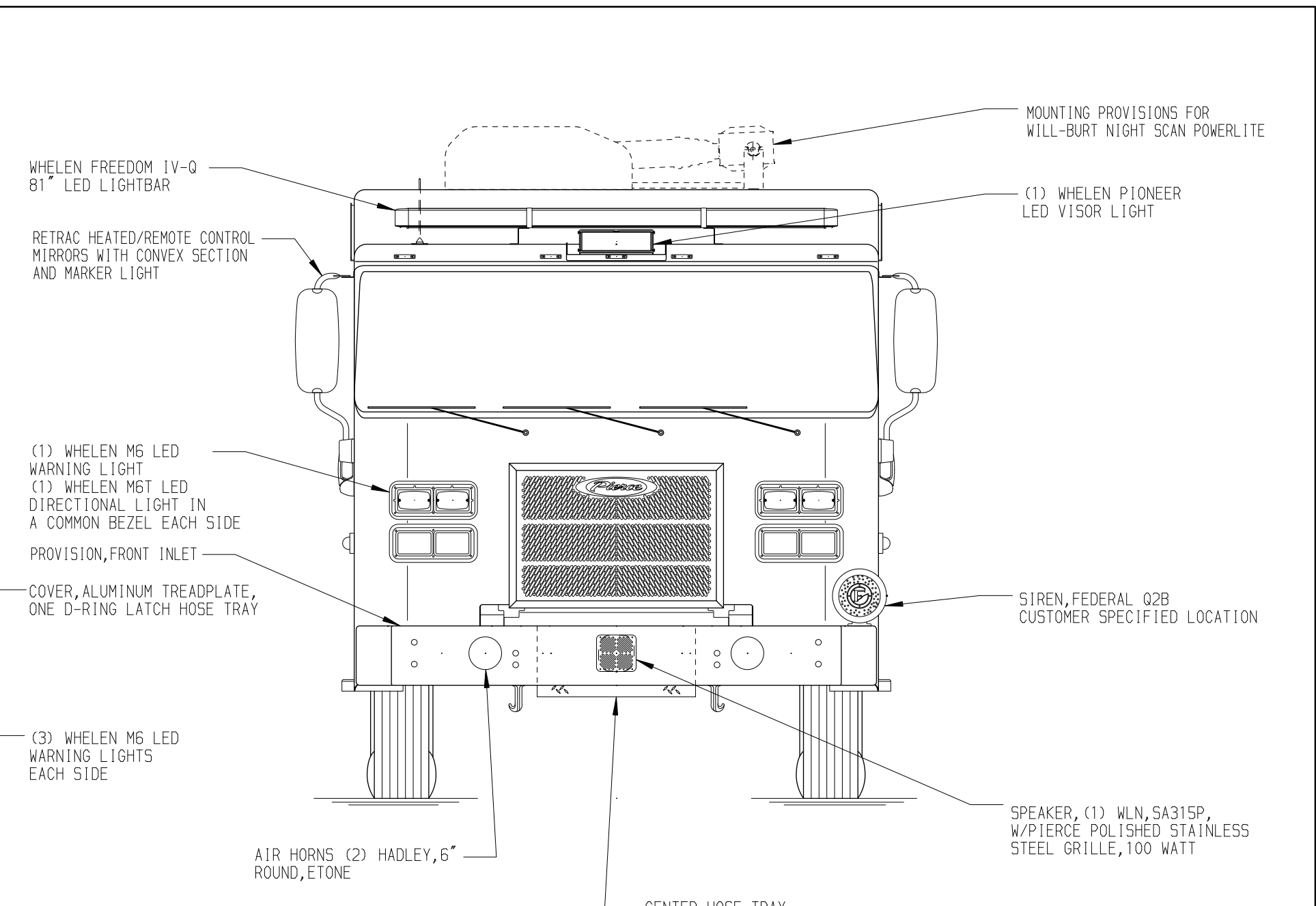
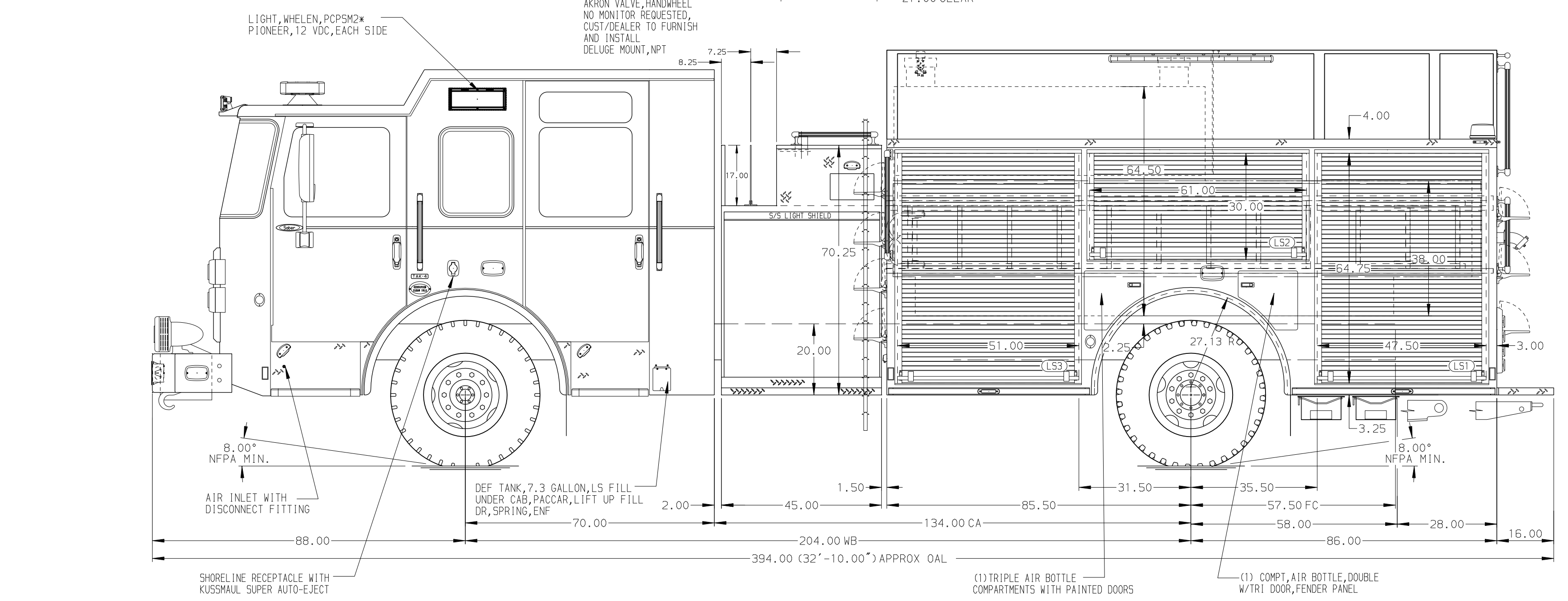
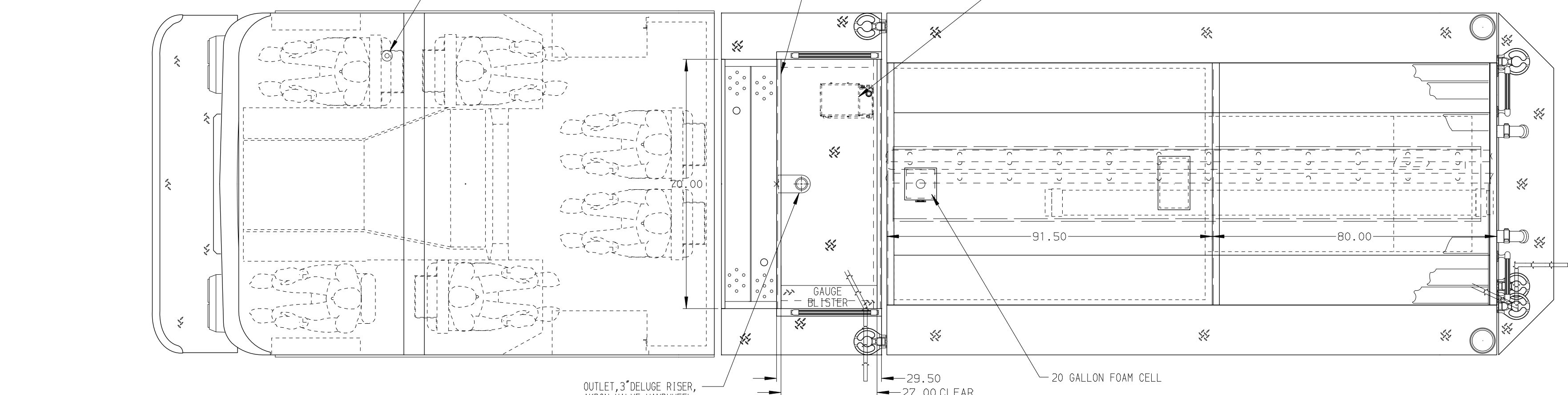
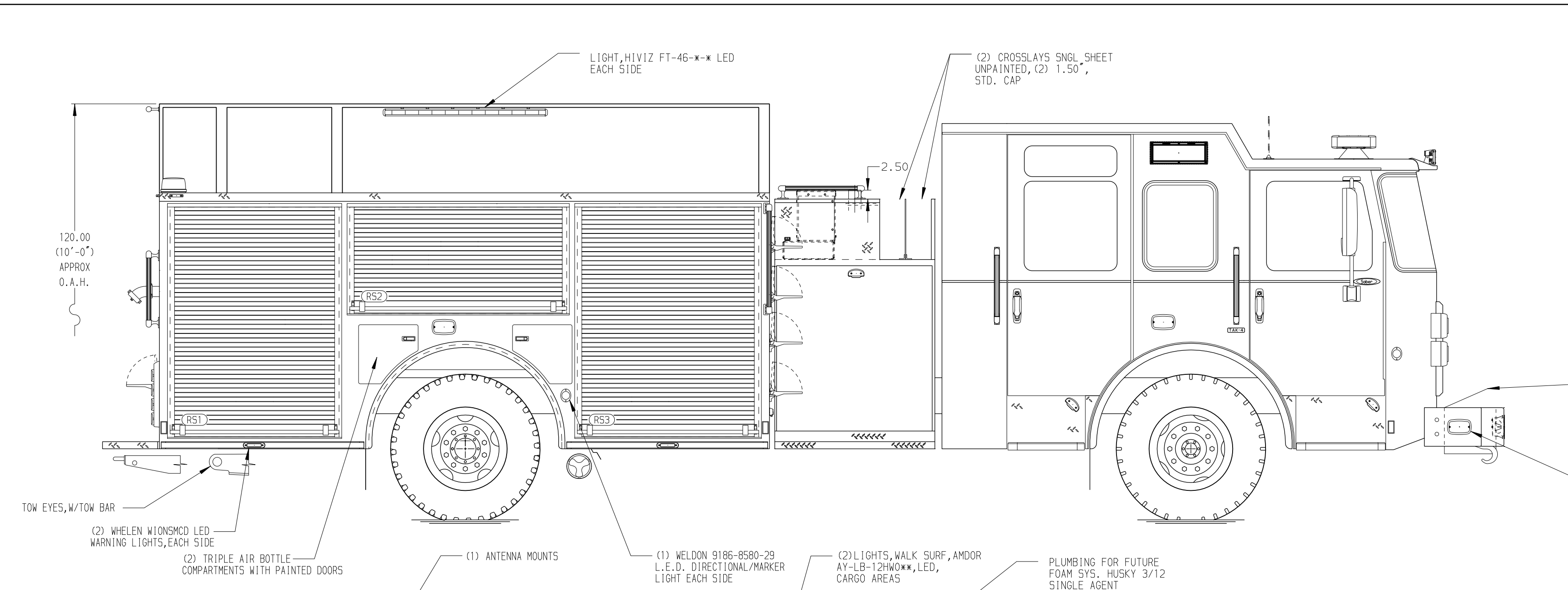
SPEEDLAYS
Speedlays Not Required

GENERATOR
Generator Not Required

Foam System
PLUMBING FOR FUTURE FOAM

Foam Cell
Foam Cell 20 GALLON

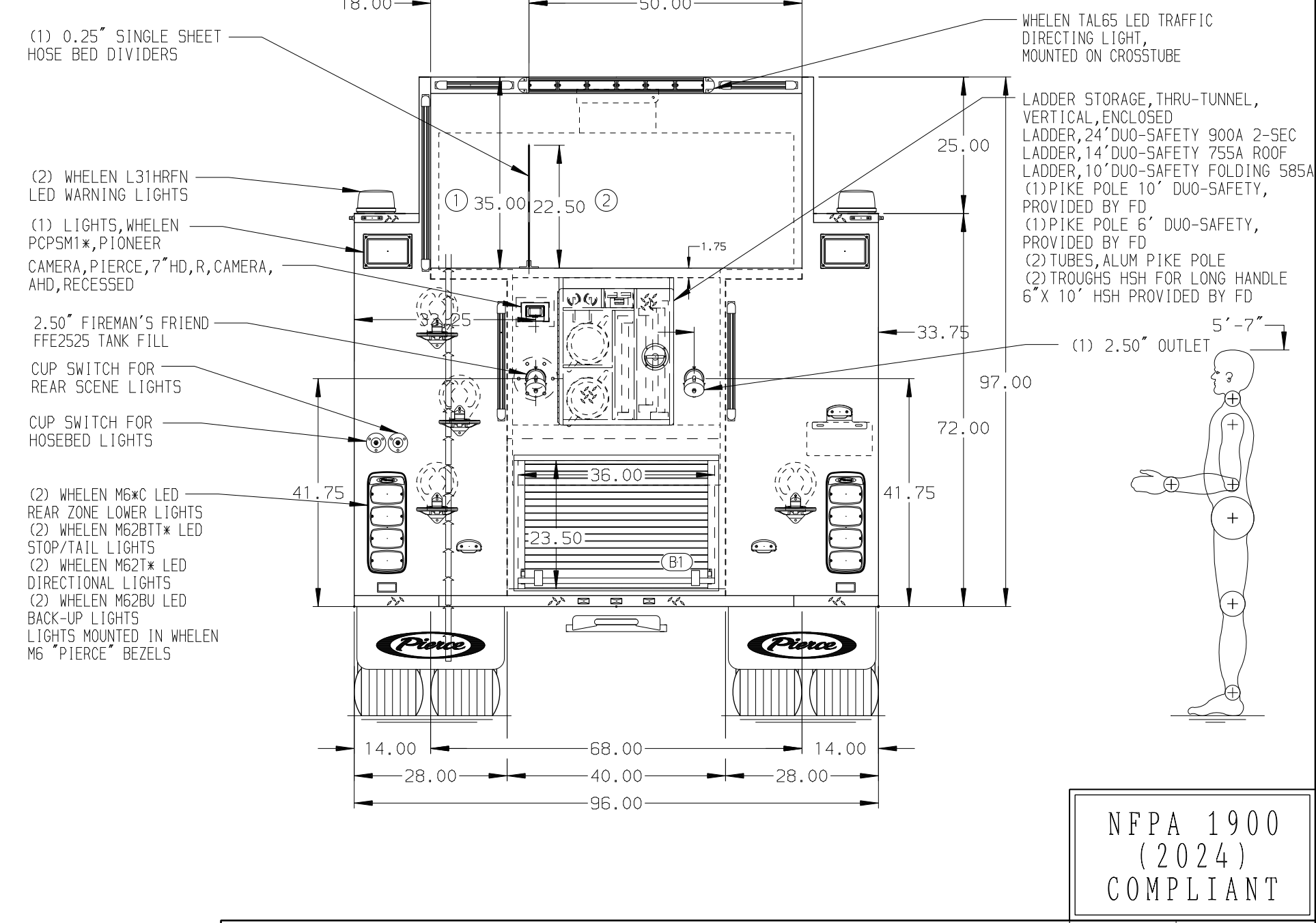
NOTE
DIMENSIONS SHOWN ARE APPROXIMATE AND ARE SUBJECT TO MINOR DEVIATIONS AS MAY OCCUR OR BE NECESSARY IN CONSTRUCTION. MINOR DETAILS NOT SHOWN.



HOSEBED CAPACITY

BED 1
400' OF 3.00" D.J. POLY HOSE

BED 2
1000' OF 5.00" D.J. POLY HOSE



		JOB NO.	44383
		SCALE	DATE
CHASSIS DATA TITLE 1500GPM, 1020G TANK, 1000G WATER, 20G FOAM 171" BODY PUMPER 2G, HARDWIRED MAKE PIERCE MODEL SABER FR	FOR	PIERCE FIELD UNIT (ORIGINAL)	DRAWN BY VHO
	DWG NO.	44383AD	CHECKED BY JAP
		SHEET SIZE	SHEET NO.
		D	1 OF 1

NFPA 1900 (2024) COMPLIANT