

PUMPER BODY

Long Aluminum 2nd Gen Pumper

CHASSIS

Sober FR Chassis

CHASSIS AXLE, FRONT, CUSTOM

20,000 Lb D-2000F Dana Axle

AXLE, REAR

27,000 Lb 526-190 Dana Axle

ENGINE

510 HP Paccar MX13 Engine

TRANSMISSION

Allison 6th Gen, 4000 EVS P

BUMPER

19" Extended Steel Pointed

CAB

7010 Enforcer FR Cab

BODY WATER TANK

1000 Gal/Lon New York Style Poly Tank

COMPT, PUMPER, REAR

30.75" FF RollUp Rear Compt

COMPT, PUMPER, LEFT SIDE

161" RollUp Full Height Front & Rear FDLER

COMPT, PUMPER, RIGHT SIDE

161" RollUp Full Height Front & Rear FDLER

FIRE SUPPRESSION PUMPHOUSE

45" Control Zone Side Mount

PUMP

1500 GPM Waterous CSU

CROSSLAYS, 1.50"

(2) 1.50" Standard Capacity

CROSSLAYS, 2.50"

(1) 2.50" Standard Capacity

SPEEDLAYS

Speedlays Not Required

GENERATOR

Generator Not Required

Foam System

Provisions for Future Husky 3/12

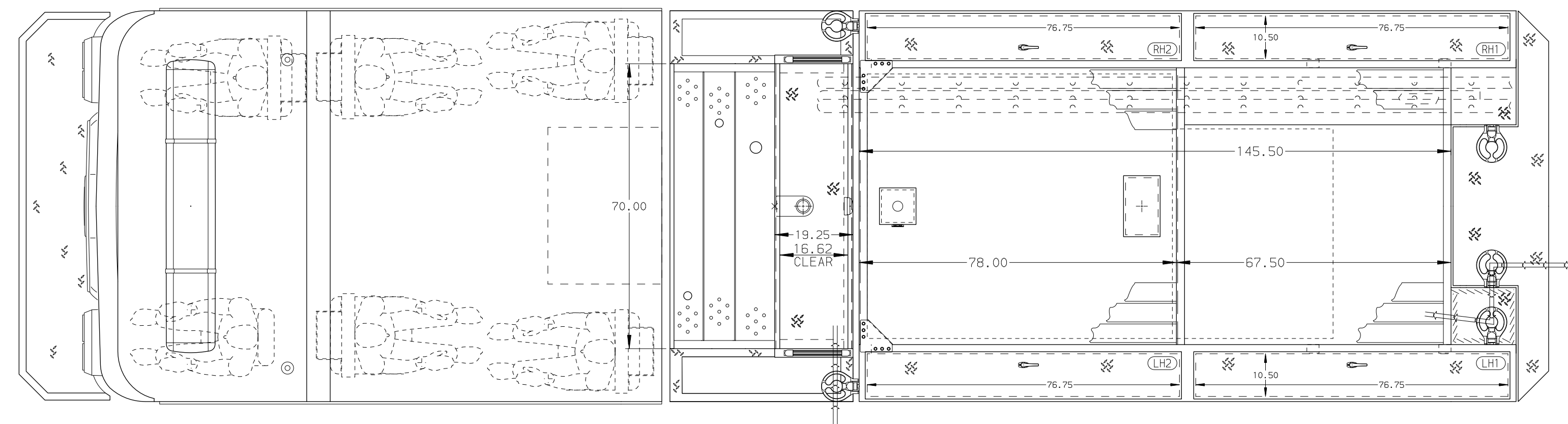
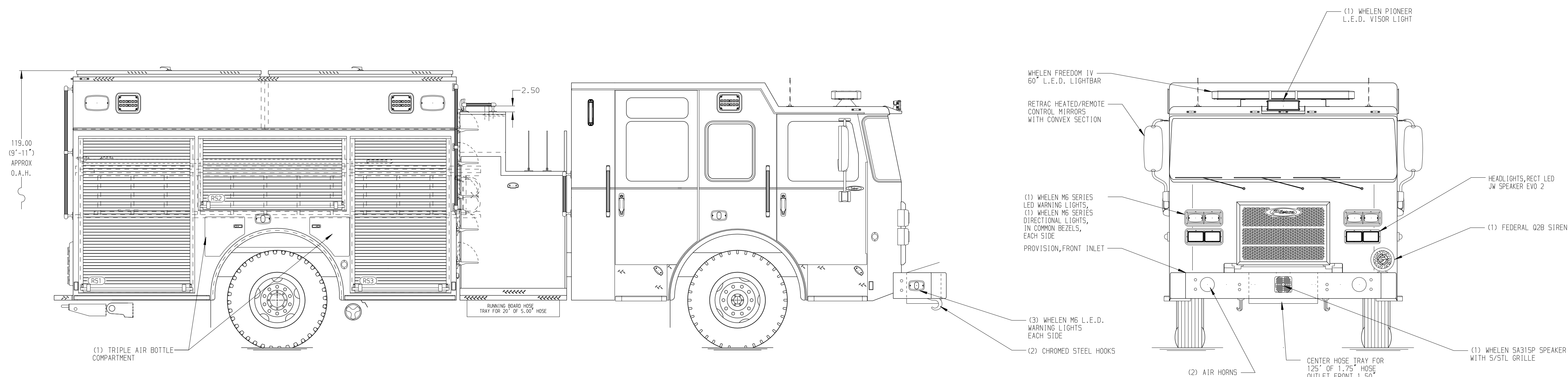
Foam Cell

20 Gal/Lon Foam Cell

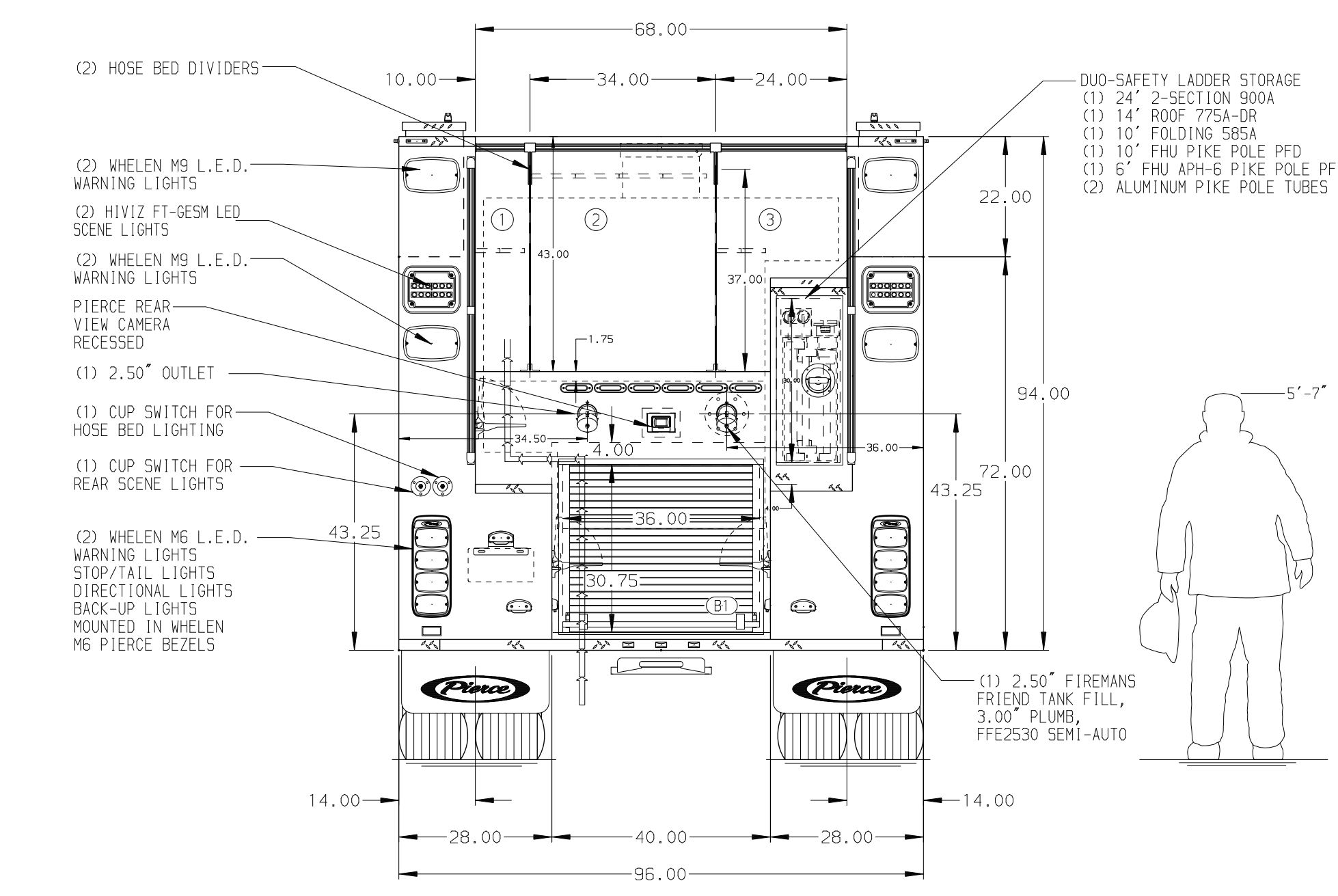
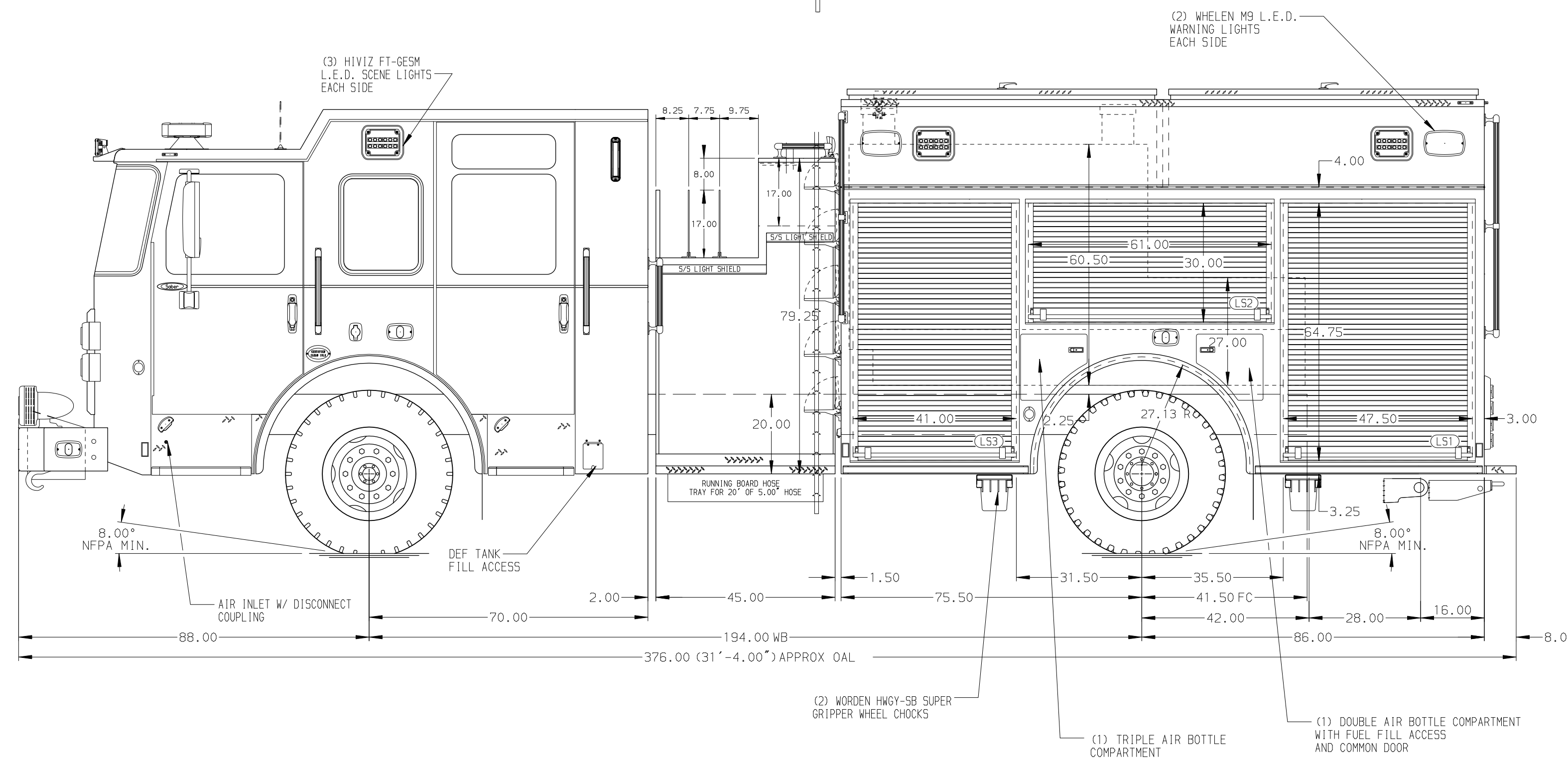
Side Roll and Frontal Impact Protection

NOTE
DIMENSIONS SHOWN ARE APPROXIMATE AND ARE SUBJECT TO MINOR DEVIATIONS AS MAY OCCUR OR BE NECESSARY IN CONSTRUCTION. MINOR DETAILS NOT SHOWN.

- ONE 1.50" OUTLET WITH 2.00" PIPING AND SWIVEL LOCATED IN CENTER BUMPER TRAY OF THE CAB
- SHOULDER RECEPTACLE WITH KUSSMAUL SUPER AUTO-EJECT LOCATED ON DRIVER SIDE OF THE CAB
- AIR INLET WITH DISCONNECT COUPLING IN THE DRIVER SIDE STEPWELL
- BATTERY CHARGER LOCATED BEHIND DRIVER'S SEAT
- BATTERY CHARGE INDICATOR DISPLAYED THROUGH DRIVER SIDE WINDOW
- SIX ADJUSTABLE SHELVES IN COMPARTMENTS PER SHOP ORDER
- FOUR FLOOR MOUNTED SLIDE-OUT TRAYS LOCATED PER SHOP ORDER
- PROVISIONS FOR FRONT INLET



HOSEBED CAPACITY	
BED 1	300' OF 2.50" D.J. POLY HOSE
BED 2	1000' OF 5.00" D.J. POLY HOSE
BED 3	300' OF 2.50" D.J. POLY HOSE



	JOB NO.	44475
	SCALE	DATE
TITLE	Pierce Pumper Approval Drawing	DRAWN BY
MAKE	-	ADP
FOR	Pierce Field Unit	CHECKED BY
MODEL	-	JAP
REV	-	SHEET SIZE
DATE	-	SHEET NO.
BY	-	1 OF 1
CH	-	
SABER FR	DWG NO.	44475AD