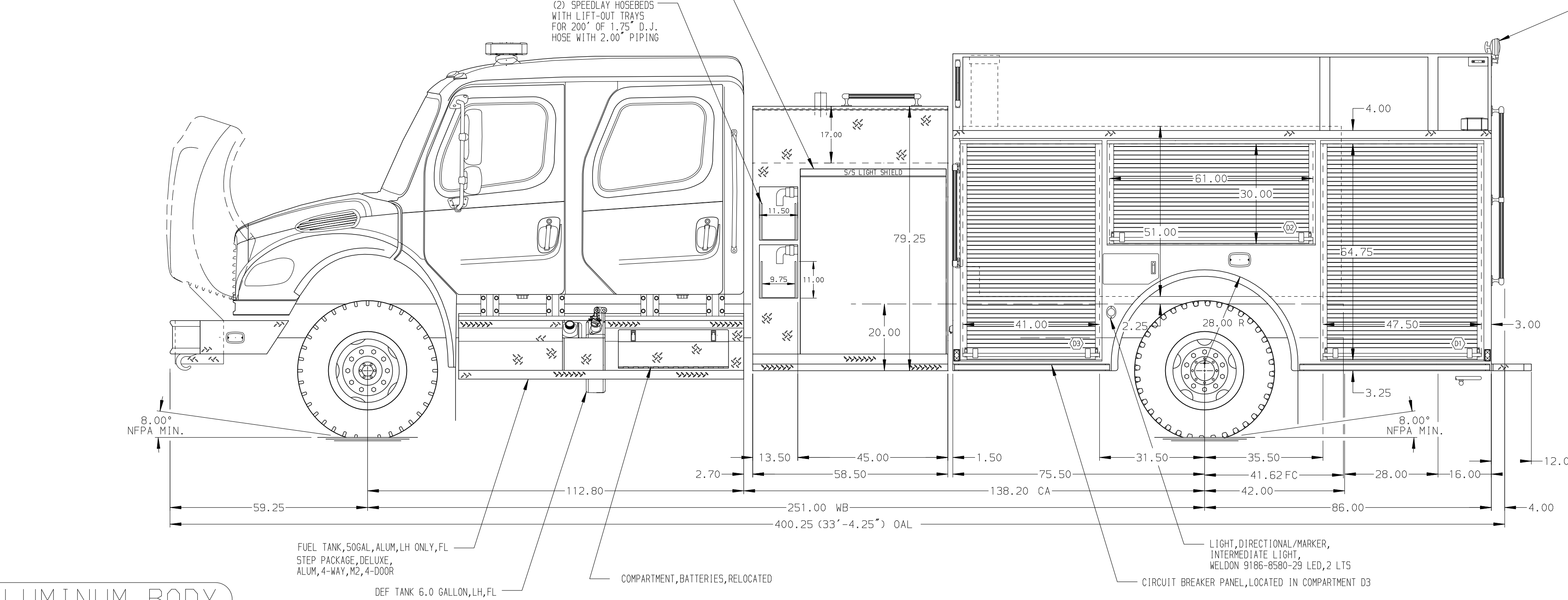


- HOSEBED CAPACITIES**
- ① 200' OF 2.50" D.J. POLYESTER HOSE
 - ② 1000' OF 5.00" D.J. POLYESTER HOSE
 - ③ 500' OF 3.00" D.J. POLYESTER HOSE

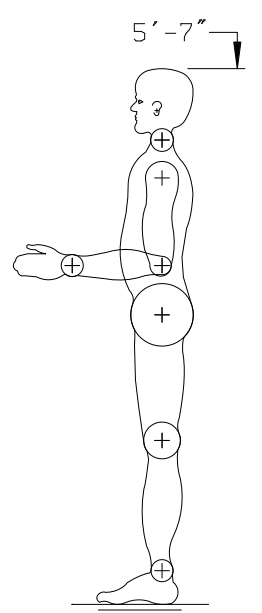
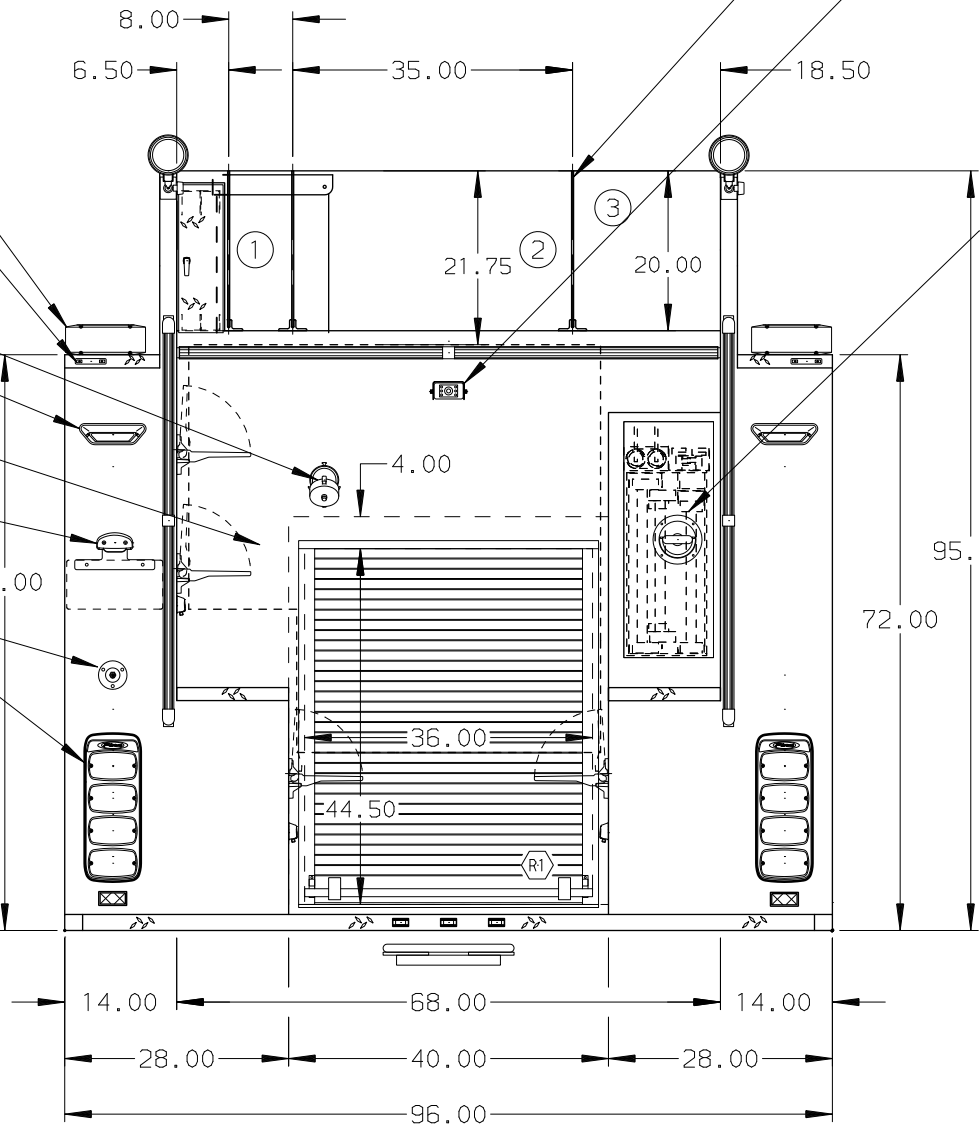
(2) 0.25" SINGLE SHEET HOSEBED DIVIDER

PIERCE CW134639CA1 BACKUP CAMERA SYSTEM

LADDERS BTWN TANK & S.SHT, EXT'D RR ENCL'D COMPLETE, RPH, PS, SMOOTH ALUM DOOR WITH "D" LATCH LADDER, 24" DUO-SAFETY 900A 2-SECT, PROVIDED BY FD LADDER, 14" DUO-SAFETY 775A ROOF, PROVIDED BY FD DUO-SAFETY FOLDING LADDER 10' 585-A, PROVIDED BY FD PIKE POLE, PROVIDED BY FD, 10' AKRON PIKE POLE, PROVIDED BY FD, 6" AKRON TUBES, ALUM, PIKE POLE STORAGE



LIGHT, REAR ZONE UPPER, WHELEN MFLD24LED MTG, REAR WARN LIGHTS, ON TOP OF COMPT
LIGHTS, CLEARANCE/MARKER/10, REAR, FRP LED BAR & P25 LED, 4 LTS
(1) 2.50" REAR OUTLET
LIGHTS, REAR SCENE, WHELEN, PELCO LED, 45 DEG FLANGE
WALL, REAR, SMOOTH ALUM W/ALUM DIAMONDPLATE BEAVERTAILS BRACKET, LICENSE PLATE & LIGHT, P25 LED
CUP SWITCH FOR DECK LIGHTS
(2) LIGHTS, REAR ZONE LOWER, WHELEN M64C LED, FOR TAIL LT HOUSING
(2) WHELEN M6 L.E.D. STOP/TAIL LIGHTS
(2) WHELEN M6 L.E.D. DIRECTIONAL LIGHTS
(2) WHELEN M6 L.E.D. BACK-UP LIGHTS
LIGHTS MOUNTED IN WHELEN M6 "PIERCE" BEZELS



ALUMINUM BODY

NOTE
DIMENSIONS SHOWN ARE APPROXIMATE AND ARE SUBJECT TO MINOR DEVIATIONS AS MAY OCCUR OR BE NECESSARY IN CONSTRUCTION.
MINOR DETAILS NOT SHOWN.

REV	DATE	BY	CH
15MAR17		RWI	CAG
19JAN17		RWI	JAF

CHASSIS DATA
MAKE
FL
MODEL
M2-106

TITLE 1250-D-1000, 161" BODY FULL HEIGHT 45" SIDE CONTROL, (2) SPEEDLAYS FOR PIERCE STOCK UNIT BRADENTON FLORIDA DWG NO. 31076AD	Pierce MANUFACTURING INC.		JOB NO.	31076
	SCALE 1:24		DATE	
	DRAWN BY JAF		9JAN17	
	CHECKED BY RWI		10JAN17	
SHEET SIZE D		SHEET NO. 1 OF 1		