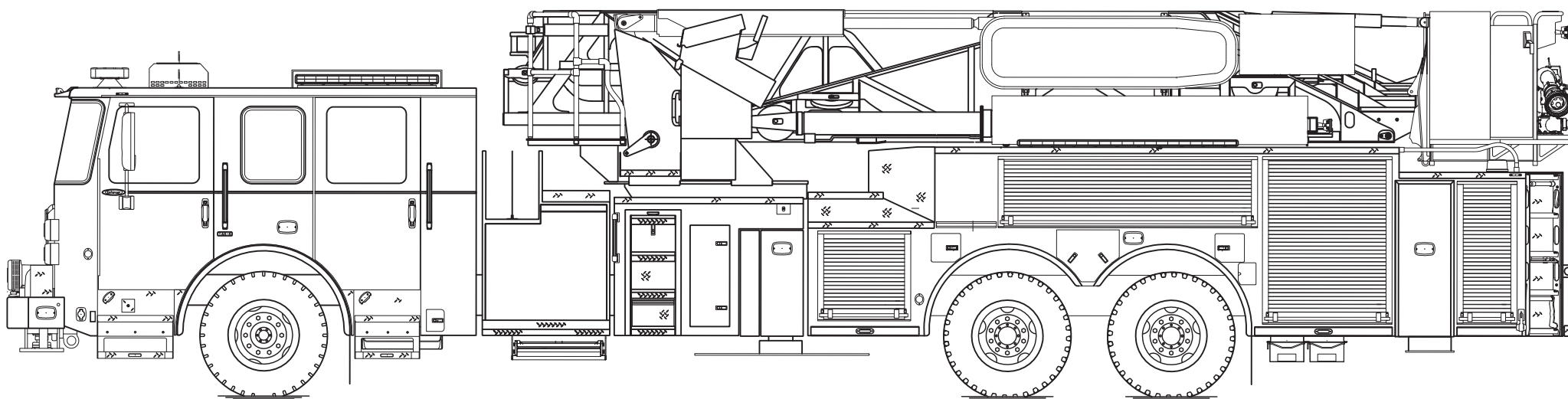




PERFORM. LIKE NO OTHER.™

# Enforcer™ Ascendant® 100' Heavy-Duty Aerial Tower



## Chassis

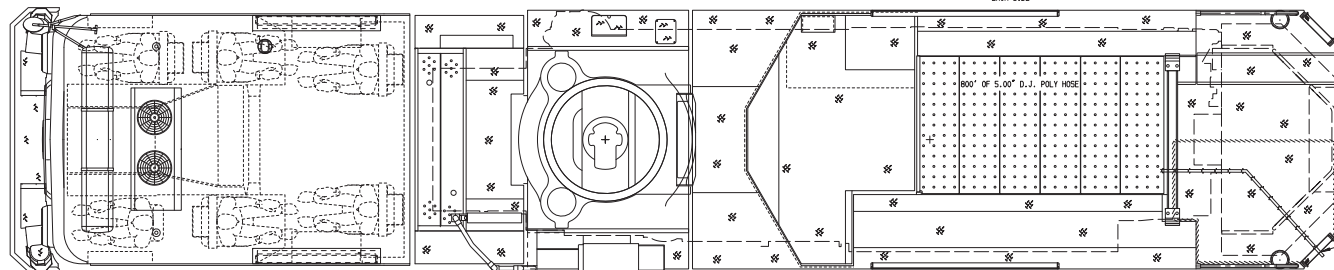
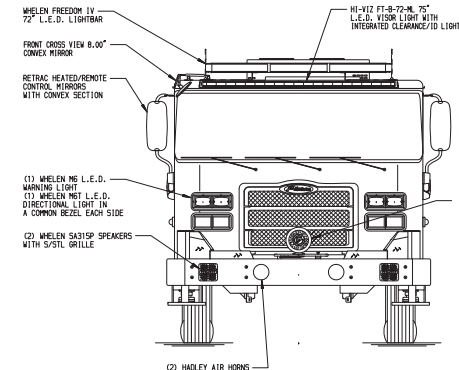
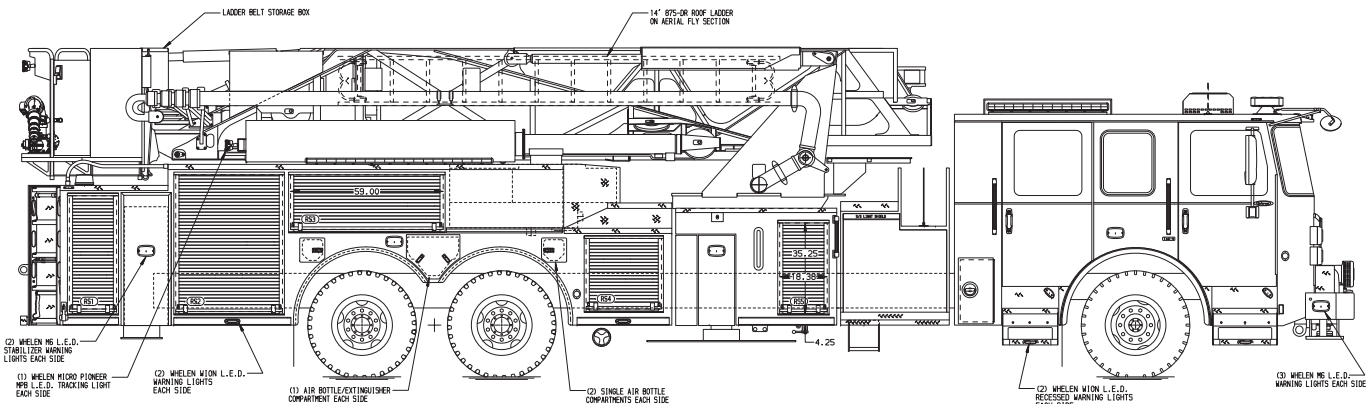
Chassis	70" <b>Enforcer</b> cab
Seating Capacity	6
Overall Height	11' 4"
Overall Length	43' 0.25"
GVW Rating	76,640 lb
Safety	<b>Side Roll and Frontal Impact Protection</b>
Front Axle	<b>TAK-4® Independent Front Suspension</b> , 24,000 lb
Rear Axle	<b>TAK-4 T3™ Independent Rear Suspension</b> , 52,640 lb
Engine	<b>PACCAR MX13</b> , 510 hp, 1850 lb-ft
Electrical System	<b>Command Zone™ Advanced Electronics System</b>

## Body

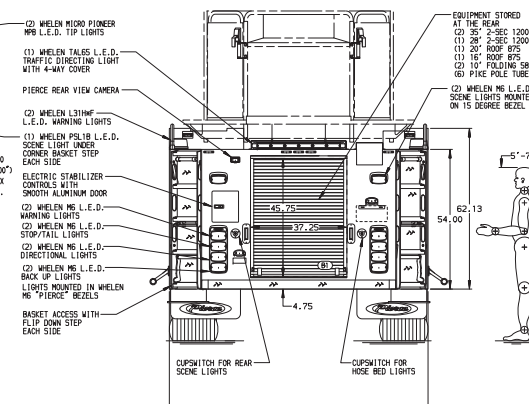
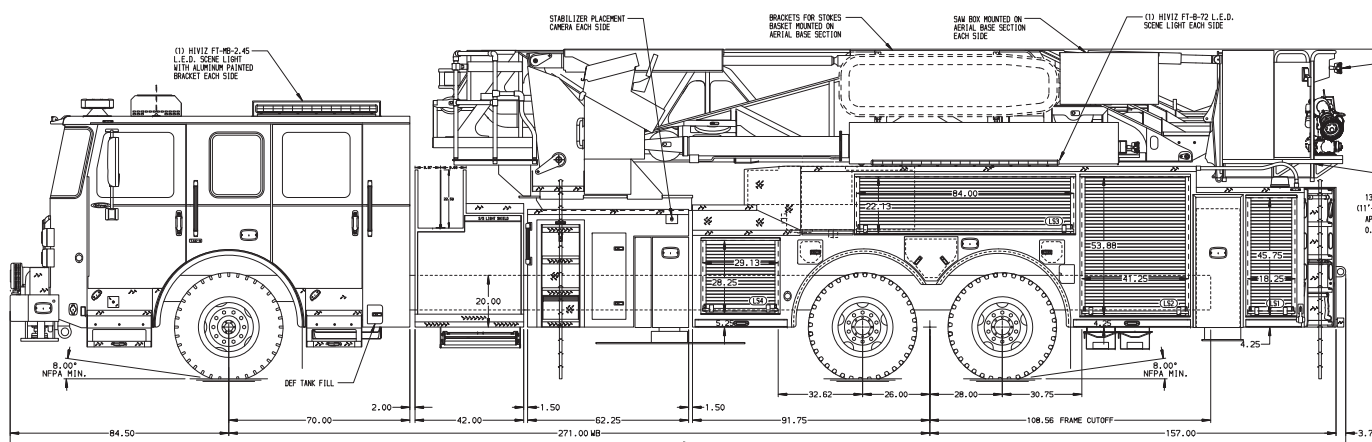
Material	Aluminum
Shelving	Adjustable, up to 500 lb
Doors	Rollup
Pump	Waterous, 2,000 gpm
Tank	300 gallons
Pump Panel	<b>Pierce® Control Zone™</b> 42" pump panel

## Aerial Device

Device	<b>Ascendant 100' Heavy-Duty Aerial Tower</b>
Reach	100' vertical 93' horizontal
Tip Load	1,000 lb dry 500 lb wet
Equipment	150 lb allowance
Flow Rate	2,000 gpm
Stabilizers	1 set extending 18' spread 4 down-jacks



<b>BODY</b> 100' Ascendant Aerial Tower Alum Body <b>COMPT, DRIVER SIDE</b> Full Height Rollup Doors <b>COMPT, PASSENGER SIDE</b> Full Height Rollup Doors	<b>WATER TANK</b> 300 Gallon Poly Water Tank <b>Foam System</b> Foam System Not Required <b>Foam Cell</b> Foam Cell Not Required
---------------------------------------------------------------------------------------------------------------------------------------------------------------------------	-------------------------------------------------------------------------------------------------------------------------------------------------



<b>CHASSIS</b> Enforcer Chassis <b>ENGINE</b> 510 HP Paccor MX13 Engine	<b>CAB</b> 7000 Enforcer Cab <b>BUMPER</b> 15" Extended Painted Aluminum	<b>AXLE, FRONT, CUSTON</b> 24,000 lb TAK-4 Axle <b>AXLE, REAR</b> 52,640 lb TAK-4 T3 Axle	<b>TRANSMISSION</b> Allison 6th Gen, 4500 EVS P	<b>PUMPHOUSE</b> 42" Control Zone Side Mount <b>PUMP</b> 2000 GPM Waterous S100	<b>CROSSLAYS, 1.50"</b> (2) 1.50", 200" of 1.75" Hose <b>CROSSLAYS, 2.50"</b> 2.50" Crosslay Not Required	<b>SPEEDLAYS</b> Speedlays Not Required <b>GENERATOR</b> Generator Not Required	<b>SAFETY</b> Side Roll and Frontal Impact Protection	<b>CUSTOMER APPROVAL</b> APPROVED BY: DATE: REV DATE BY CH ENFORCER	<b>Pierce MANUFACTURING INC.</b>	<b>JOB NO.</b> 42454 <b>SCALE</b> 1:24 <b>DATE</b> 30JUL24 <b>DRAWN BY</b> ANZ <b>CHECKED BY</b> AST <b>01AUG24</b> <b>SHEET NO.</b> 1 of 1
<b>NOTE</b> DIMENSIONS SHOWN ARE APPROXIMATE AND ARE SUBJECT TO MINOR DEVIATIONS AS MAY OCCUR OR BE NECESSARY IN CONSTRUCTION. MINOR DETAILS NOT SHOWN.										
1. SHORELINE RECEPTACLE WITH KUSMUL SUPER AUTO-EJECT LOCATED ON DRIVER SIDE FRONT CORNER OF THE CAB 2. AIR INLET WITH DISCONNECT COUPLING IN A RECESSED ALUMINUM THREADPLATE BOX IN THE DRIVER SIDE STEPMILL 3. BATTERY CHARGER LOCATED IN CAB BEHIND DRIVER'S SEAT 4. BATTERY CHARGER INDICATOR LOCATED ON DRIVER'S SEAT RISER 5. FIVE HOISTABLE FULL HEIGHT ROLLUP DOORS LOCATED IN COMPARTMENTS PER ORDER 6. FOUR FLOOR MOUNTED SLIDE-OUT TRAYS LOCATED IN COMPARTMENTS PER ORDER 7. DUAL LIGHT STRIPS LOCATED IN COMPARTMENTS PER ORDER 8. ONE SLIDE-OUT ALUMINUM TOOLBOARD LOCATED IN COMPARTMENT PER ORDER 9. 12 POWER TO AERIAL TIP 10. 3-in-1 LYTCCO BRACKETS AT AERIAL BASKET 11. TETRAID RING LIGHTING ON AERIAL LADDER										