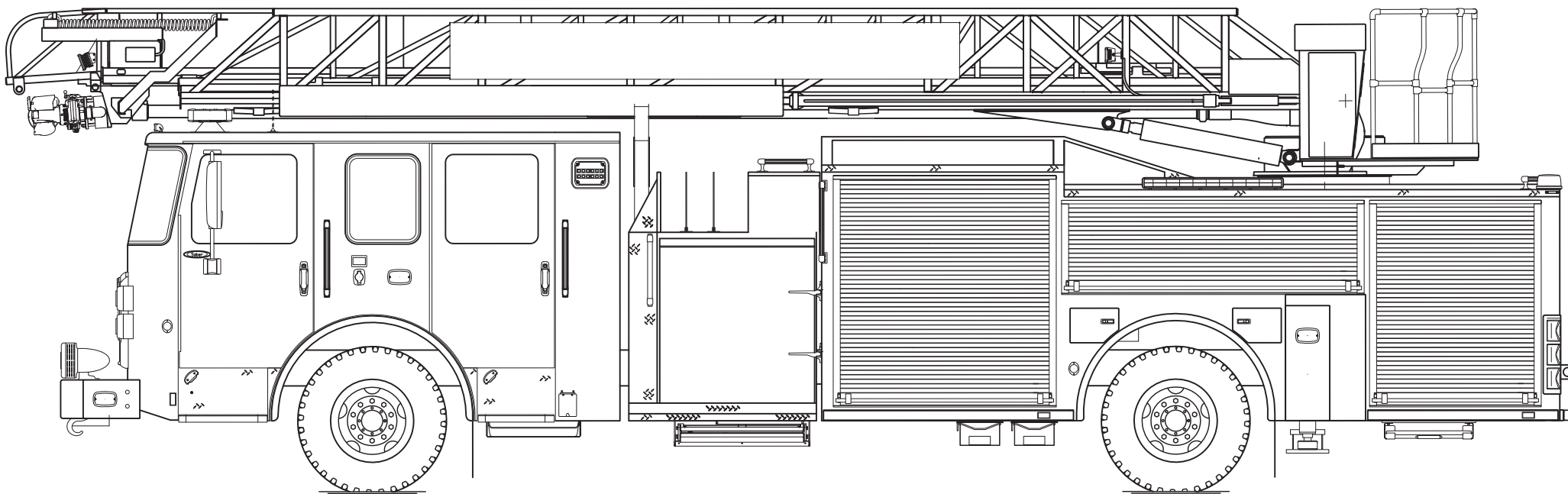




PERFORM. LIKE NO OTHER.™

Saber® 75' Heavy-Duty Aluminum Aerial Ladder



Chassis

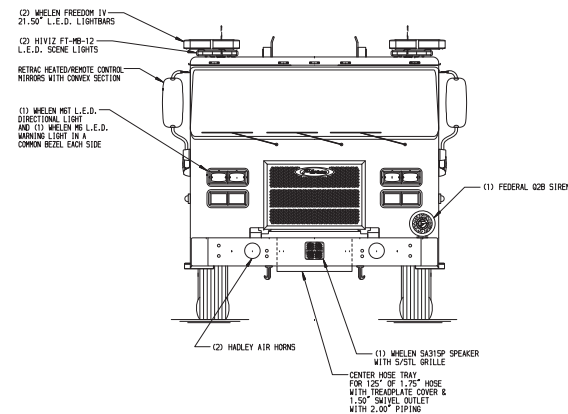
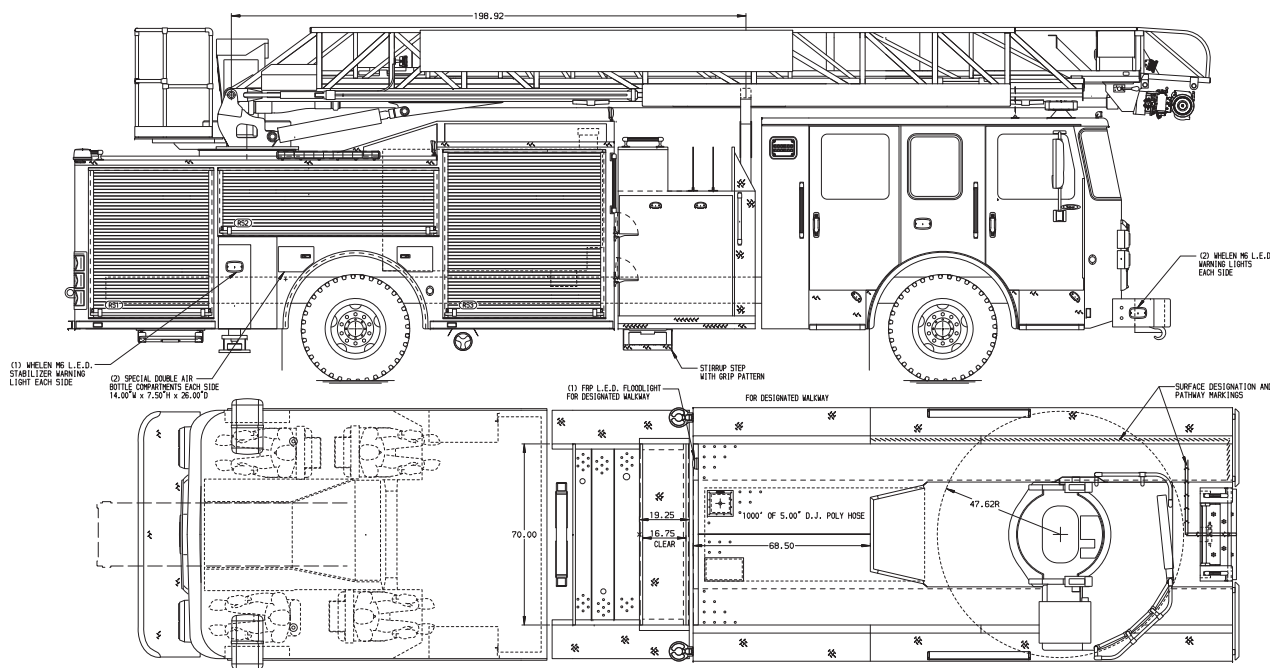
Chassis	70" Saber cab
Seating Capacity	4
Overall Height	11' 10"
Overall Length	36' 11.5"
GVW Rating	53,500 lb
Front Axle	Meritor MFS-20, 20,000 lb
Rear Axle	Meritor RS30-185, 33,500 lb
Engine	PACCAR MX13 , 510 hp, 1850 lb-ft

Body

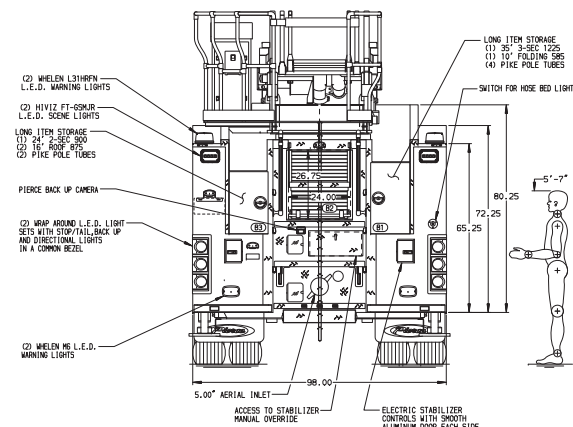
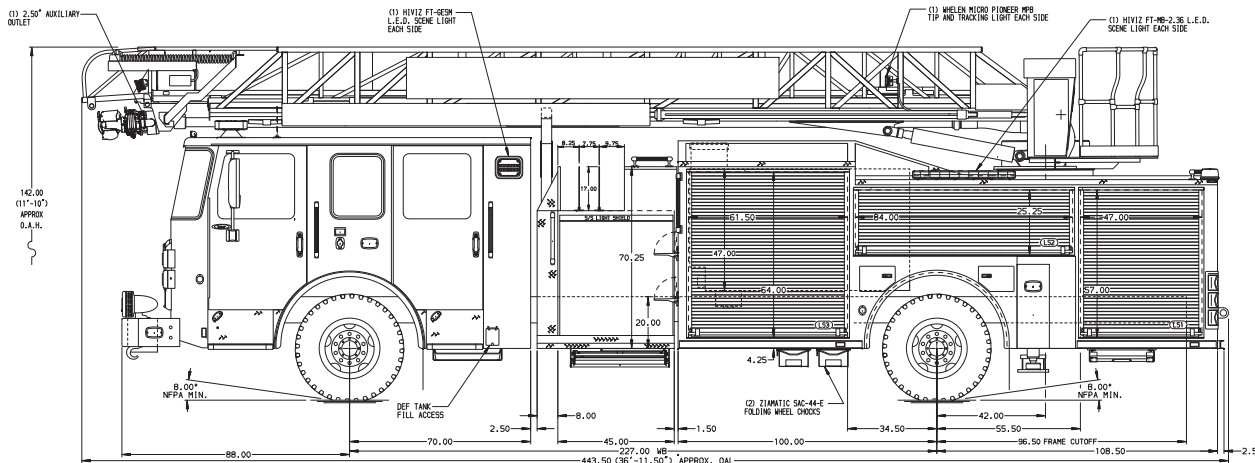
Material	Aluminum
Shelving	Adjustable, up to 500 lb
Doors	Rollup
Pump	Waterous, 2,000 gpm
Tank	500 gallons
Pump Panel	Pierce® Control Zone™ 45" pump panel

Aerial Device

Device	75' Heavy-Duty Aluminum Aerial Ladder
Reach	75' vertical 67' 9" horizontal
Tip Load	750 lb dry 500 lb wet
Equipment	100 lb allowance
Flow Rate	1,500 gpm
Stabilizers	1 set, 16' spread 2 down-jacks



BODY	WATER TANK
75" HAL Aluminum Body	500 Gallon Poly Water Tank
COMPT, LEFT SIDE FRONT	Foam System
Full Height Rollup Forward	Plumbing for Future Husky Foam System
COMPT, LEFT SIDE REAR	Foam Cell
Full Height Rollup Rearward	20 Gallon Foam Cell, Non-Reduced Water
COMPT, RIGHT SIDE FRONT	
Full Height Rollup Forward	
COMPT, RIGHT SIDE REAR	
Full Height Rollup Rearward	



CHASSIS Saber FR Chassis ENGINE 510 HP Paccor MX13 Engine	CAB 7000 Saber Cab BUMPER 19" Extended Painted Steel	AXLE, FRONT, CUSTOM 20,000 Lb Meritor Axle AXLE, REAR 33,500 Lb Meritor Axle	TRANSMISSION Allison 6th Gen, 4000 EVS P	PUMPHOUSE 45" Control Zone Side Mount PUMP 2000 GPM Waterous CSU	CROSSLAYS, 1.50" (2) 1.50" Standard Capacity CROSSLAYS, 2.50" (1) 2.50" Standard Capacity	SPEEDLAYS Speedlays Not Required GENERATOR Generator Not Required	CUSTOMER APPROVAL APPROVED BY: DATE: REV DATE BY CH SABER FR	Pierce MANUFACTURING INC. TITLE FOR PIERCE FIELD UNIT APPLETON, WI DWG NO. 42455AD	JOB NO. 42455 SCALE 1:24 DATE DRAWN BY ANZ CHECKED BY AST SHEET NO. D 1 OF 1
---	--	---	--	--	--	---	---	---	---

NOTE
DIMENSIONS SHOWN ARE APPROXIMATE AND ARE SUBJECT TO MINOR DEVIATIONS AS MAY OCCUR OR BE NECESSARY IN CONSTRUCTION.
MINOR DETAILS NOT SHOWN.

1. BUNG LIGHTING ON AERIAL LADDER
2. BUNG LIGHTING ON AERIAL LADDER
3. AIR INLET WITH DISCONNECT COUPLING IN DRIVER SIDE STEPMILL
4. BATTERY CHARGE LOCATED BEHIND DRIVER SEAT
5. BATTERY CHARGE INDICATOR LOCATED ON DRIVER SIDE OF THE CAB
6. DUAL L.E.D. LIGHT STRIPS LOCATED IN ROSE BED
7. 10" ADJUSTABLE SPEAKERS IN COMPARTMENTS PER ORDER
8. FOUR FLOOR MOUNTED SLIDE-OUT TRAYS LOCATED IN COMPARTMENTS PER ORDER
9. 10" AERIAL LIMITED RETENTION
10. DUAL LIGHT STRIPS LOCATED IN COMPARTMENTS PER ORDER
11. 1.50" RAISED AERIAL PERISTAL
12. 1500 GPM HIGH FLOW WATERWAY
13. LIFTING EYE RESIDE ATTACHMENT AT AERIAL TIP