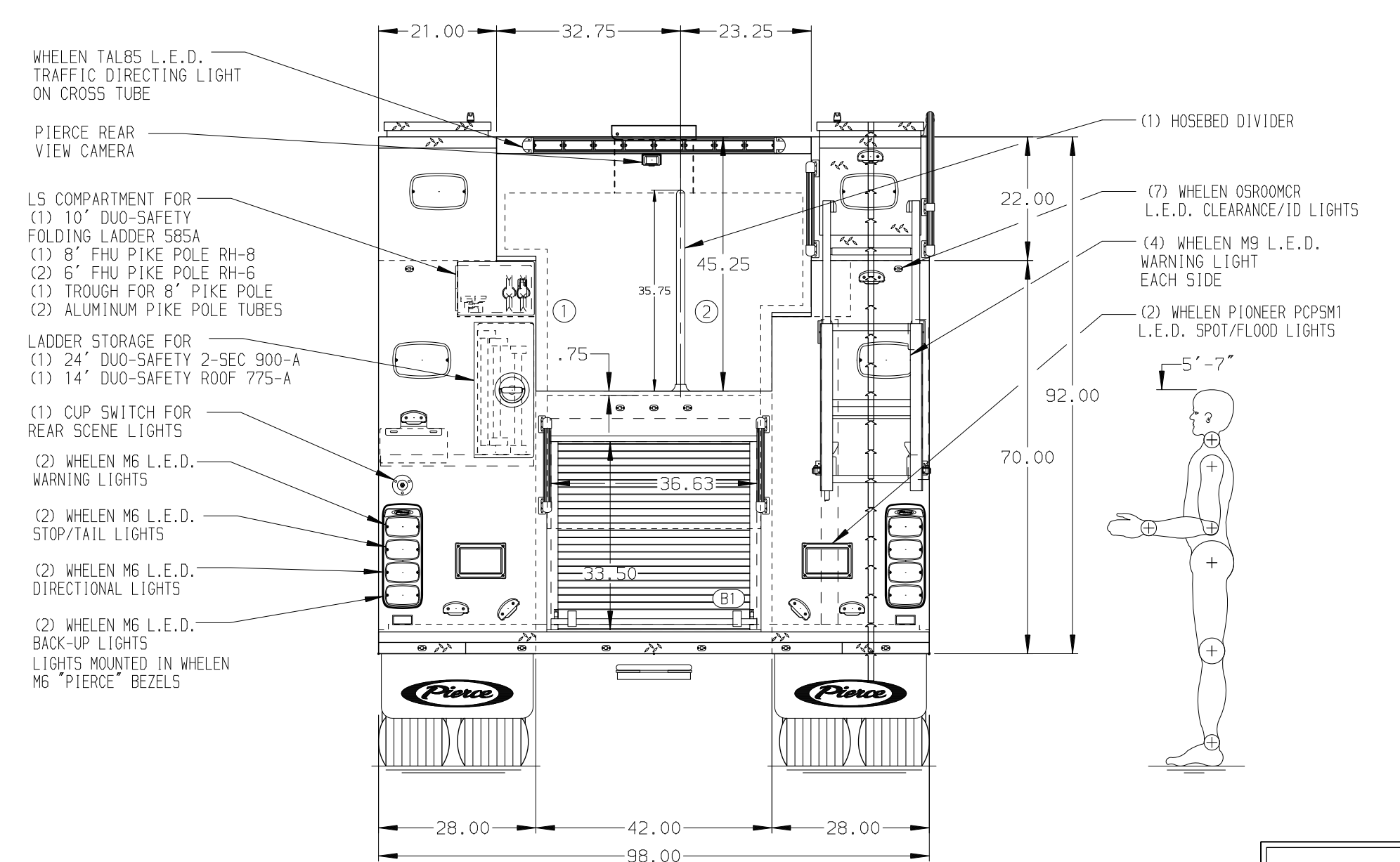
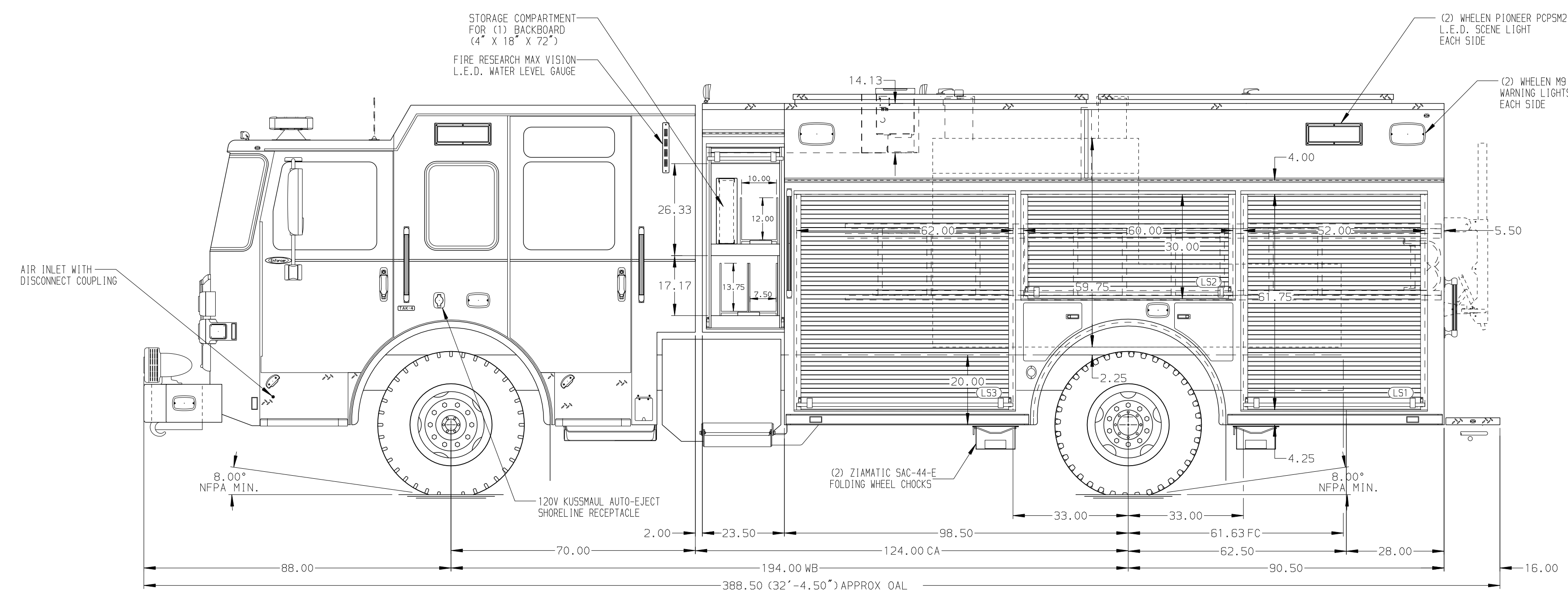


HOSEBED CAPACITIES

① 1000' OF 5.00" D.J. HOSE

② 600' OF 2.50" D.J. HOSE



ALUMINUM BODY

NOTE  
DIMENSIONS SHOWN ARE APPROXIMATE AND ARE SUBJECT TO MINOR DEVIATIONS AS MAY OCCUR OR BE NECESSARY IN CONSTRUCTION. MINOR DETAILS NOT SHOWN.

- BATTERY CHARGER LOCATED BEHIND THE DRIVER'S SEAT
- BATTERY CHARGER INDICATOR LOCATED ON DRIVER'S SEAT RISER
- DUAL L.E.D. LIGHT STRIPS LOCATED IN HOSE BED
- SIX FULL WIDTH/DEPTH ADJUSTABLE SHELVES LOCATED PER ORDER
- TWO FLOOR MOUNTED SLIDE-OUT TRAYS WITH SLIDE SLIDES LOCATED PER ORDER
- TWO SWING-OUT ALUMINUM TOOL BOARDS LOCATED PER ORDER
- PARTITION BETWEEN L51/B1 AND R51/B1

CUSTOMER APPROVAL			
APPROVED BY:			
DATE:			
REV	DATE	BY	CH
24JAN25	AM1	AST	PIERCE
03OCT24	MMF	JLL	MODEL
			ENFORCER



TITLE 1500-D-750P, 189" PUC RESCUE  
FOR PIERCE FIELD UNIT APPLETON, WISCONSIN  
DWG NO. 42520AD

NFPA 1900 (2024) COMPLIANT	
JOB NO.	42520
SCALE	1:24
DATE	
DRAWN BY	MMF
CHECKED BY	AST
SHEET NO.	30JUL24
SHEET SIZE	D
DATE	31JUL24
OF	1 OF 1