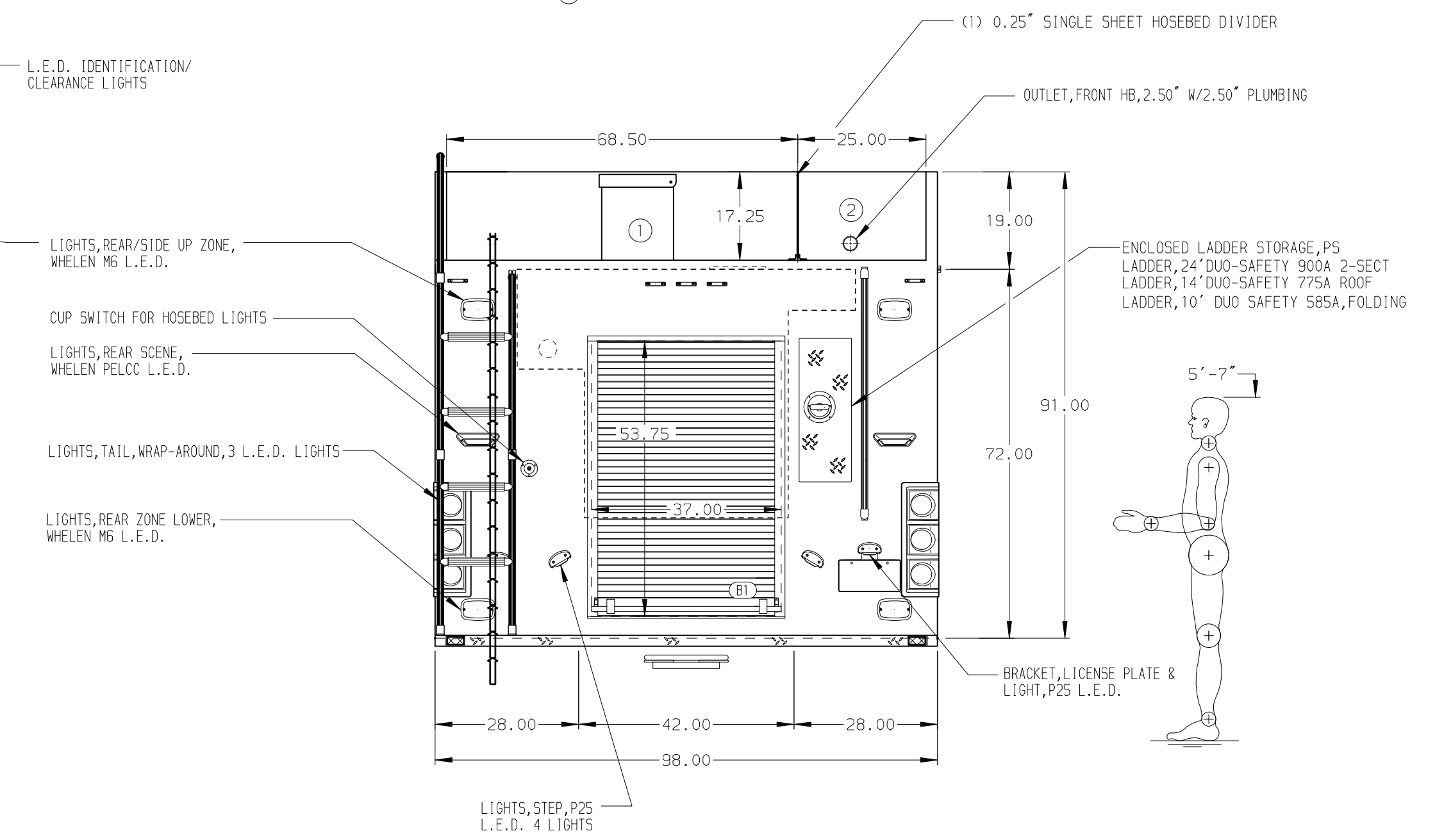
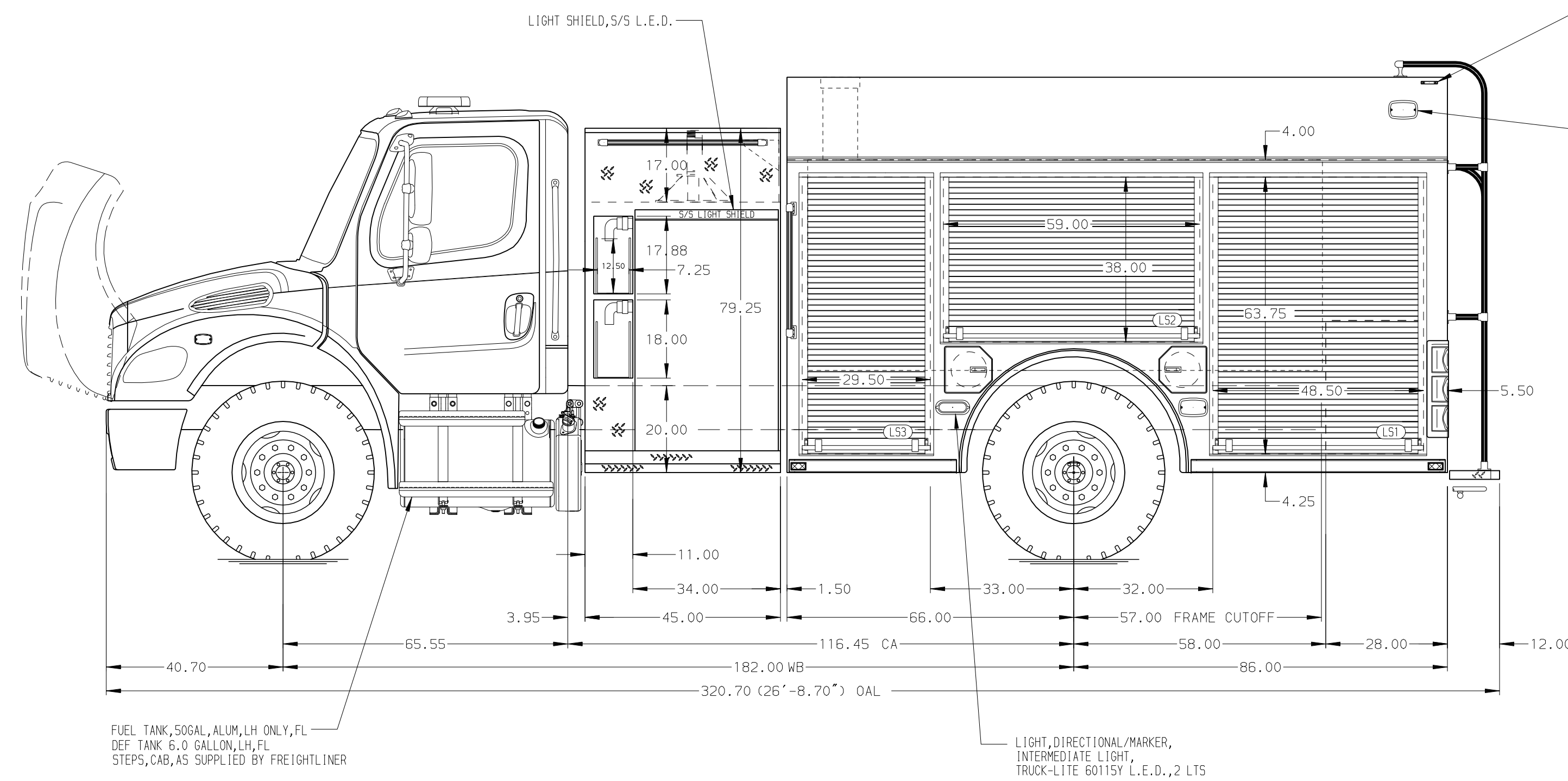


- HOSEBED CAPACITIES
- ① 1500' OF 2.50" D.J. POLYESTER HOSE
 - ② 400' OF 1.50" D.J. POLYESTER HOSE



ALUMINUM BODY

NOTE
DIMENSIONS SHOWN ARE APPROXIMATE AND ARE SUBJECT TO MINOR DEVIATIONS AS MAY OCCUR OR BE NECESSARY IN CONSTRUCTION. MINOR DETAILS NOT SHOWN.

1. CTF WHEEL CHOCKS AND MOUNTING BRACKETS
2. EXHAUST SYSTEM, HORIZONTAL, RH STEP MOUNTED DPF/SCR, 2013 FL
3. PERIMETER SCENE LIGHTS LOCATED PER SHOP ORDER
4. BATTERY CHARGING RECEPTACLE LOCATED ON THE DRIVER SIDE PUMP PANEL
5. AIR INLET LOCATED LOCATED D5 PUMP PANEL
6. CONCEPTUAL DRAWING STAGE

REV	DATE	BY	CH	SKU	MODEL
17JAN22	CRH	SKU	M2-106		

<p>Pierce MANUFACTURING INC. BRADENTON, FLORIDA</p>		JOB NO.	42805
		SCALE	1:24
TITLE	1000 GAL WATER, 152" FULL HT FRONT & REAR 34" SC PH, (2) SPEEDLAYS & LADDERS THRU BODY	DATE	
FOR	PIERCE MANUFACTURING INC. BRADENTON, FLORIDA	DRAWN BY	JLA
DWG NO.	42805AD	CHECKED BY	CAG
		SHEET SIZE	D
		SHEET NO.	1 OF 1