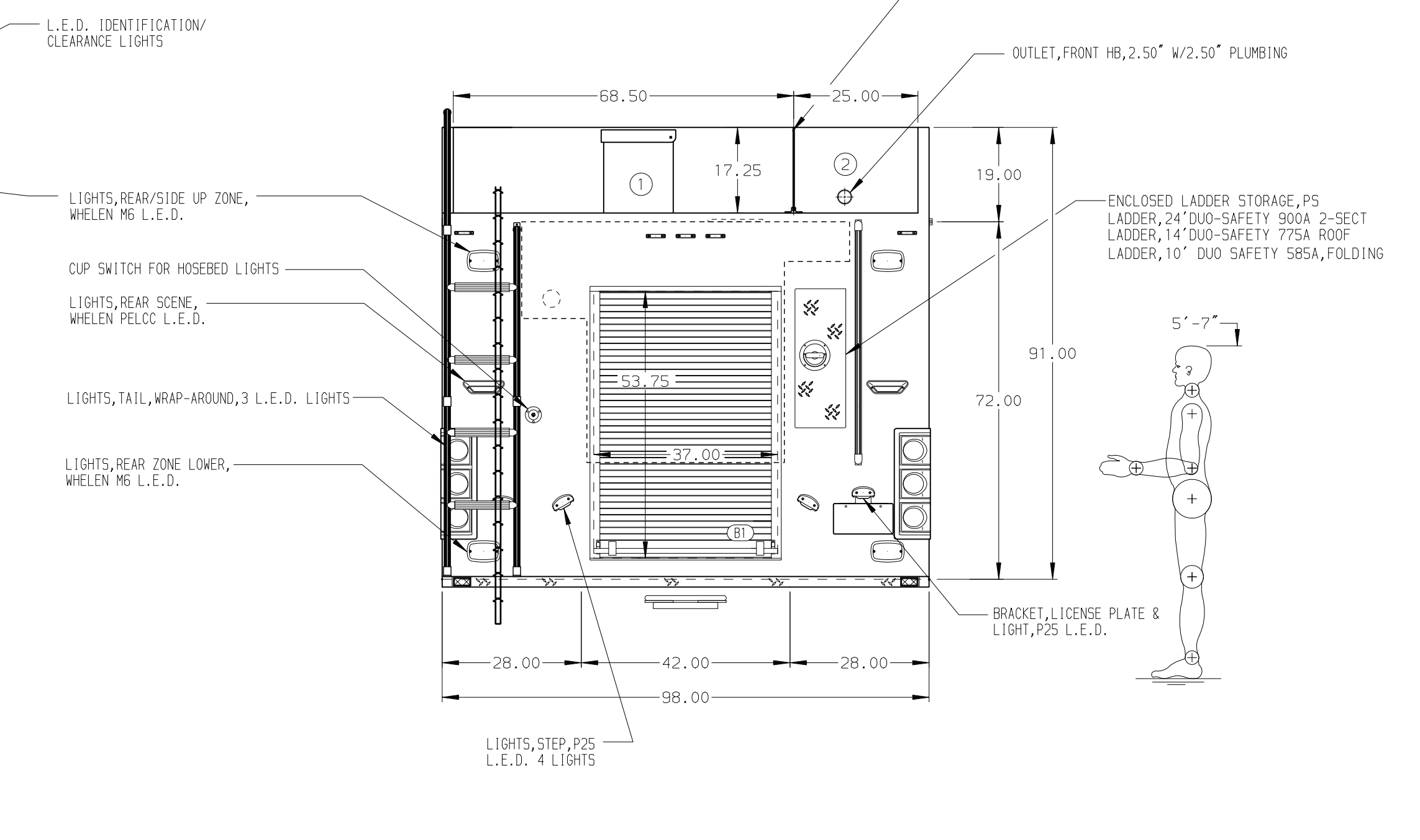
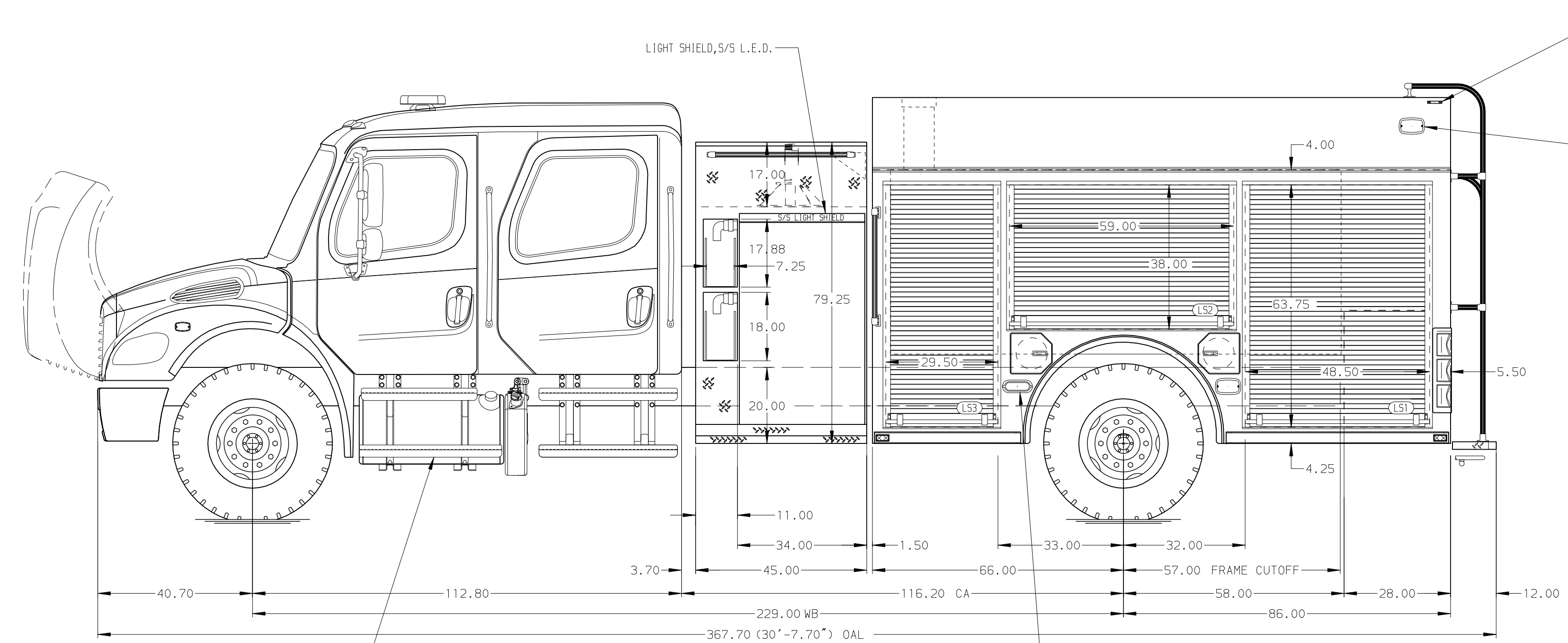


- HOSEBED CAPACITIES
- ① 1500' OF 2.50" D.J. POLYESTER HOSE
  - ② 400' OF 1.50" D.J. POLYESTER HOSE



ALUMINUM BODY

NOTE  
DIMENSIONS SHOWN ARE APPROXIMATE AND ARE SUBJECT TO MINOR DEVIATIONS AS MAY OCCUR OR BE NECESSARY IN CONSTRUCTION. MINOR DETAILS NOT SHOWN.

1. CTF WHEEL CHOCKS AND MOUNTING BRACKETS
2. EXHAUST SYSTEM, HORIZONTAL, RH STEP MOUNTED DP/SCR, 2013 FL
3. PERIMETER SCENE LIGHTS LOCATED PER SHOP ORDER
4. BATTERY CHARGING RECEPTACLE LOCATED ON THE DRIVER SIDE PUMP PANEL
5. AIR INLET LOCATED LOCATED D5 PUMP PANEL
6. CONCEPTUAL DRAWING STAGE

REV	DATE	BY	CH	MODEL
17JAN22	CRH	SKU		M2-106

<p><b>Pierce MANUFACTURING INC.</b> BRADENTON, FLORIDA</p>		JOB NO.	43917
		SCALE	1:24
TITLE	1000 GAL WATER, 152" FULL HT FRONT & REAR 34" SC PH, (2) SPEEDLAYS & LADDERS THRU BODY	DRAWN BY	JLA
FOR	PIERCE MANUFACTURING INC. BRADENTON, FLORIDA	CHECKED BY	CAG
DWG NO.	43917AD	SHEET SIZE	D
		SHEET NO.	1 OF 1